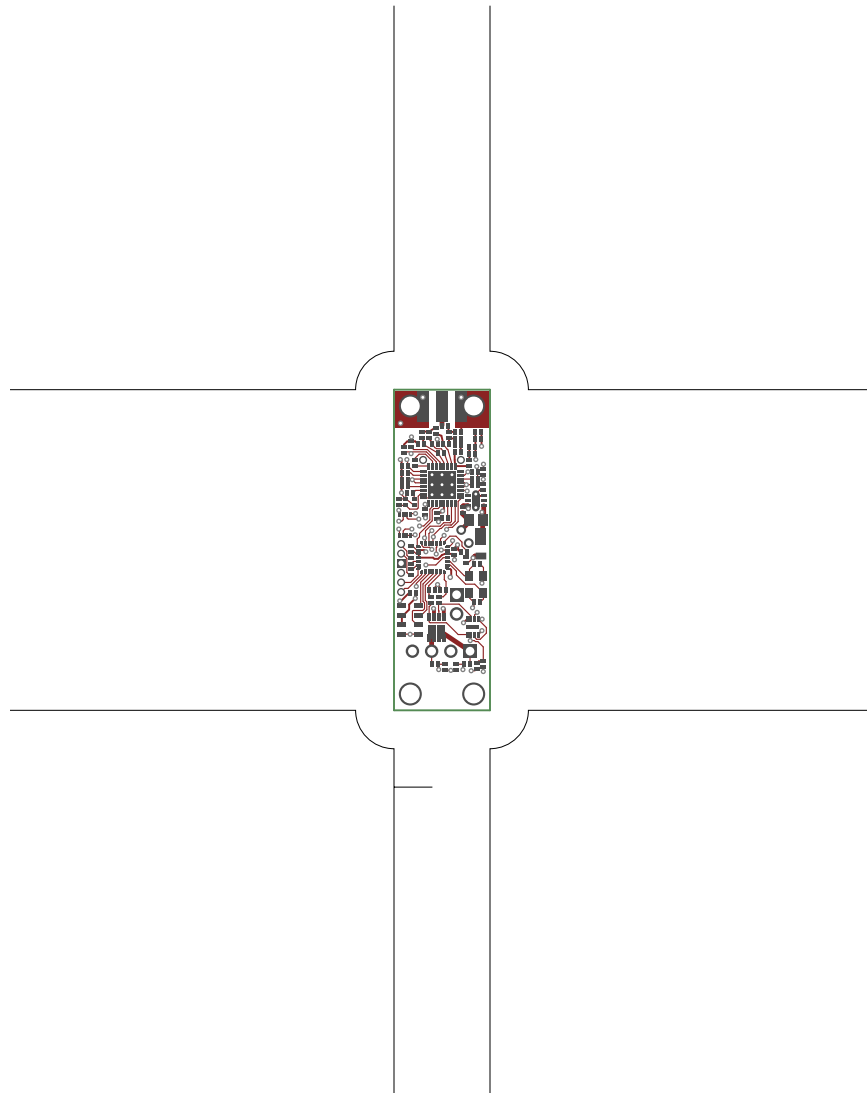
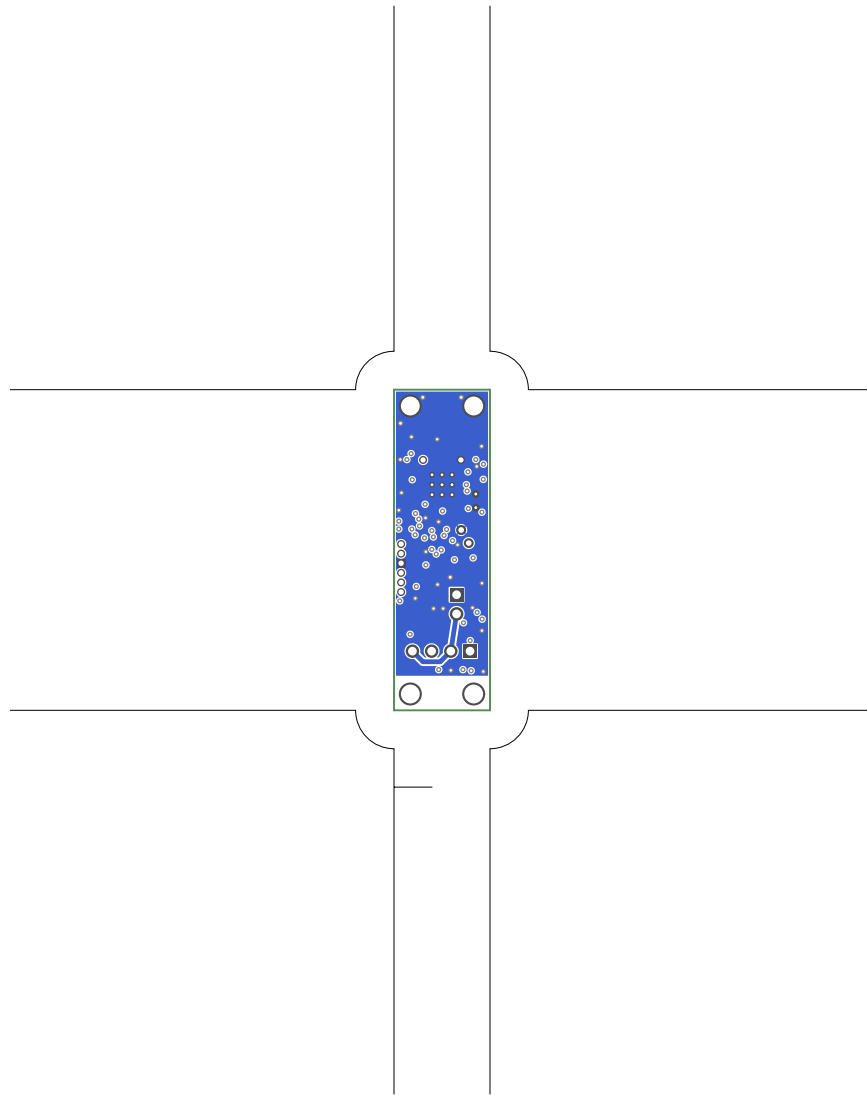


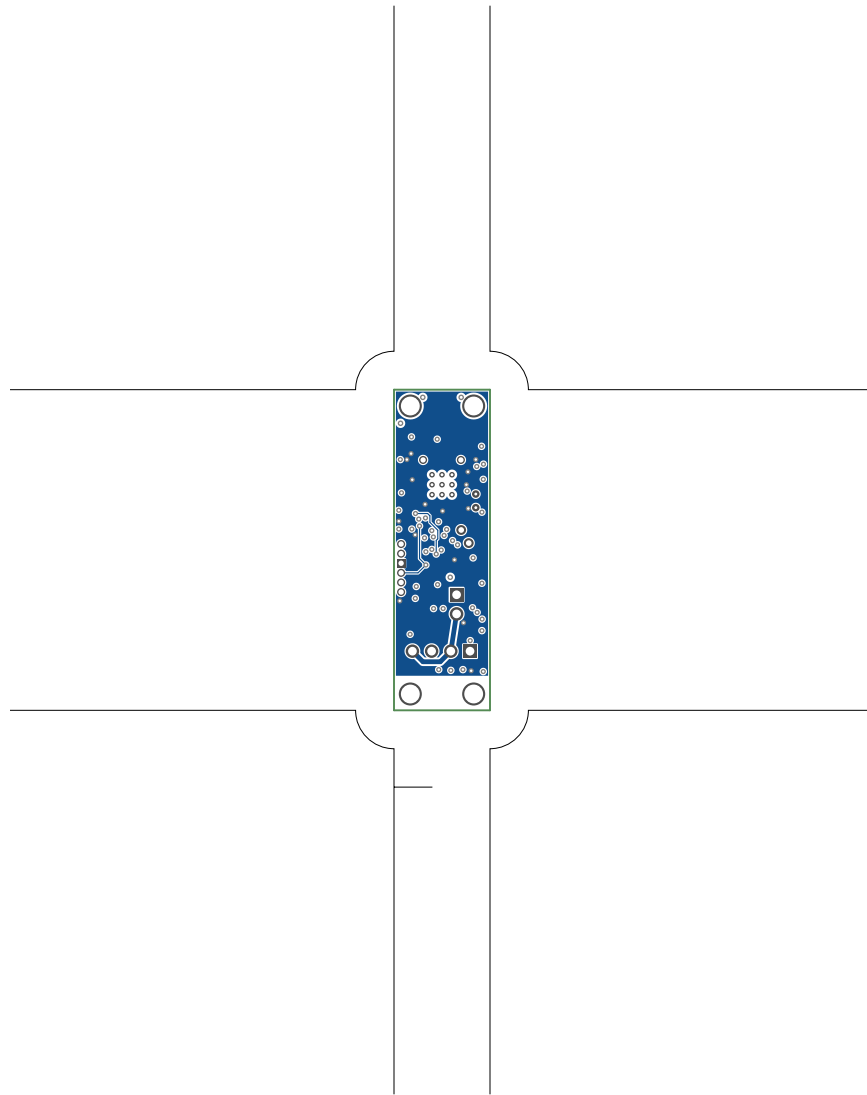
1. Table of Contents (This Page)

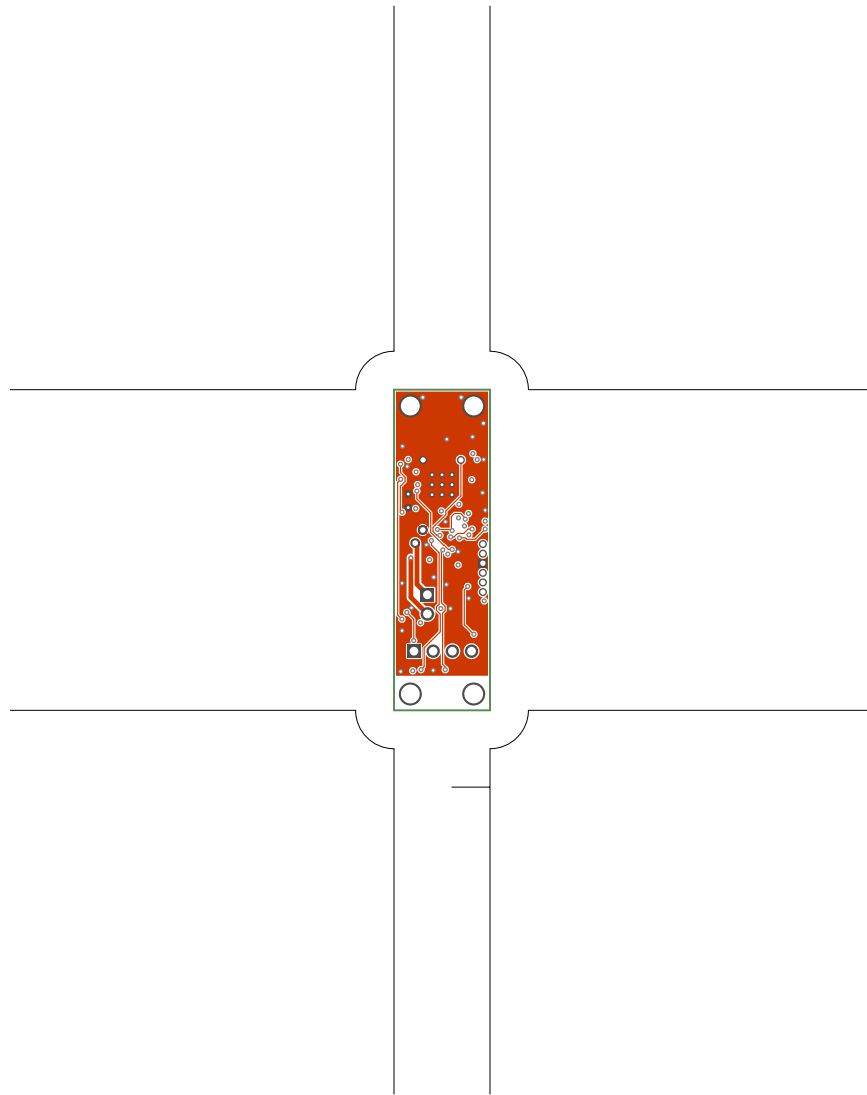
Created on Wed May 8 09:23:41 2019

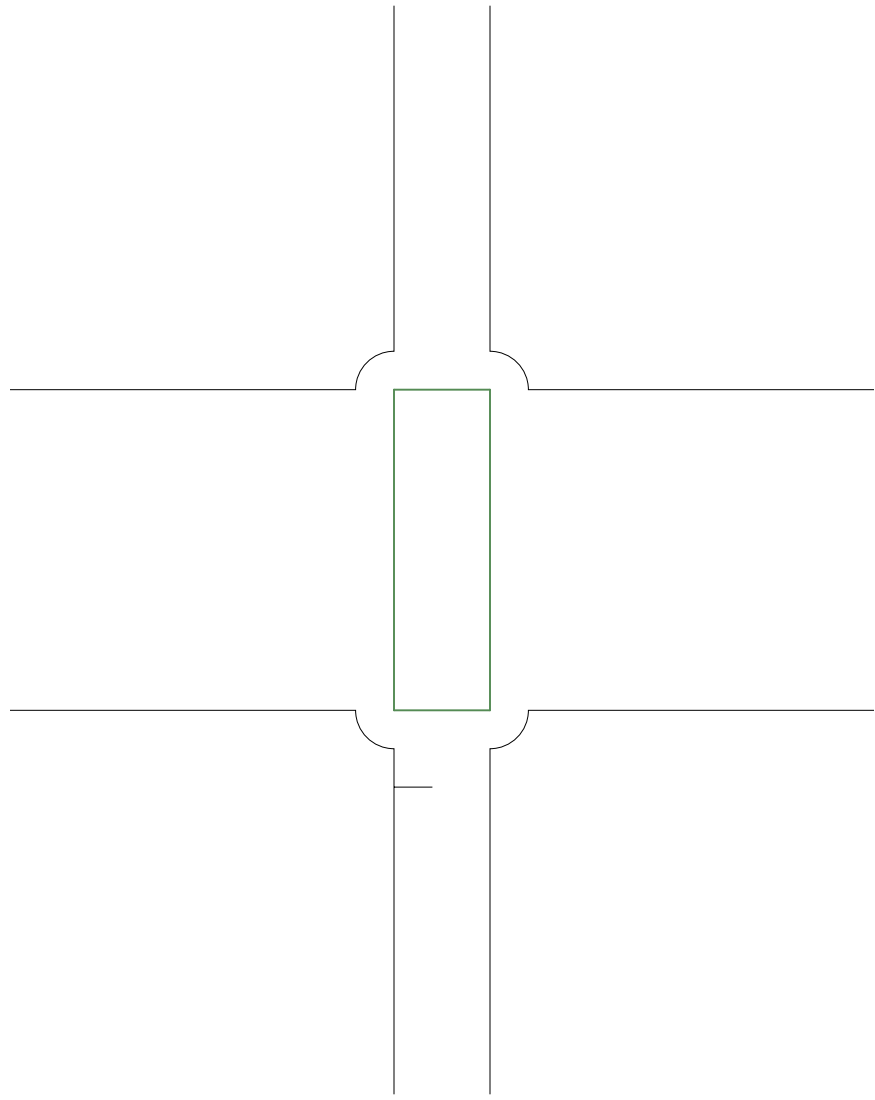
2. top
3. ground
4. power
5. bottom
6. outline
7. plated-drill
8. componentmask
9. soldermask
10. topsilk
11. bottomsilk
12. toppaste
13. topassembly
14. bottomassembly
15. fab

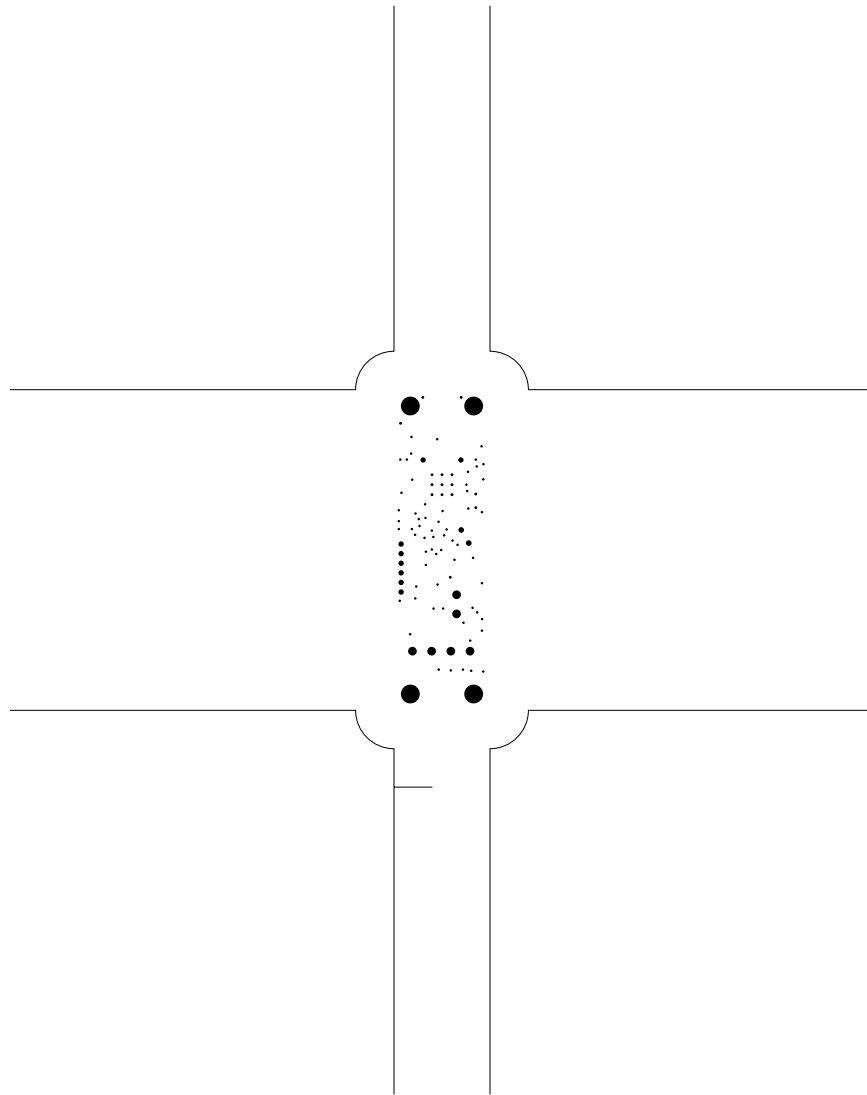


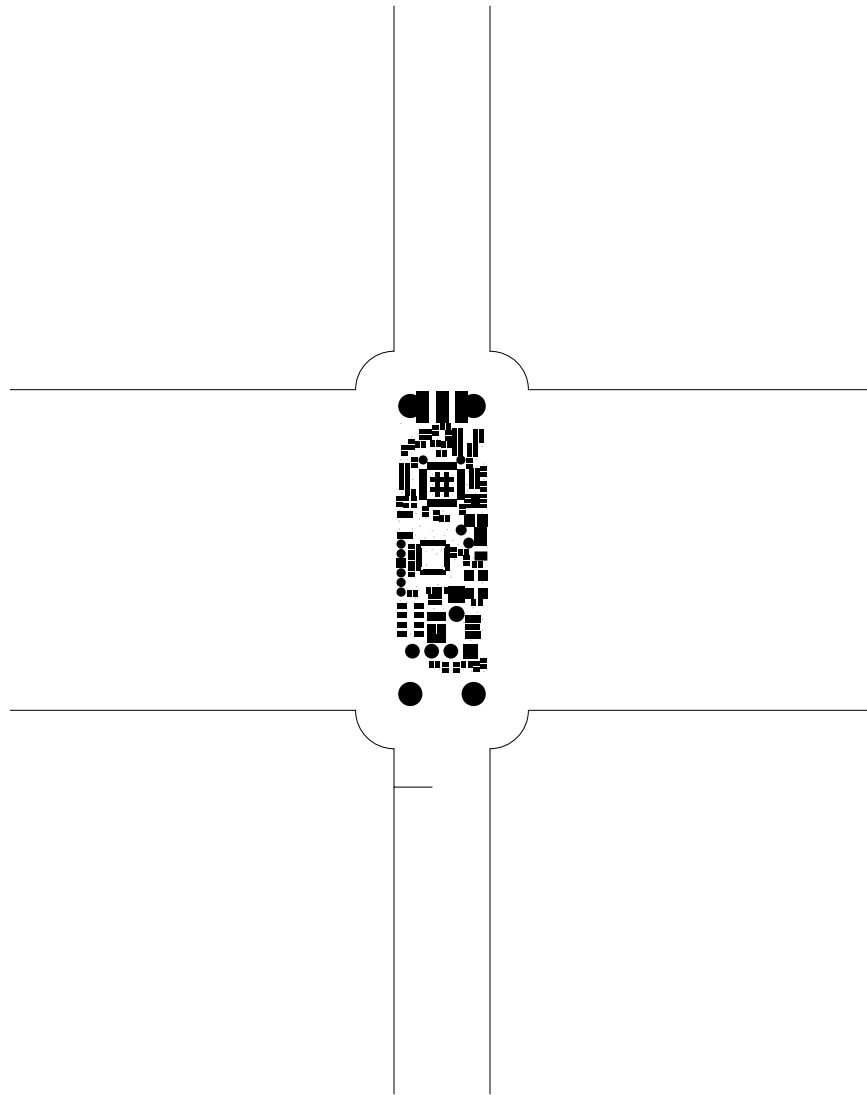


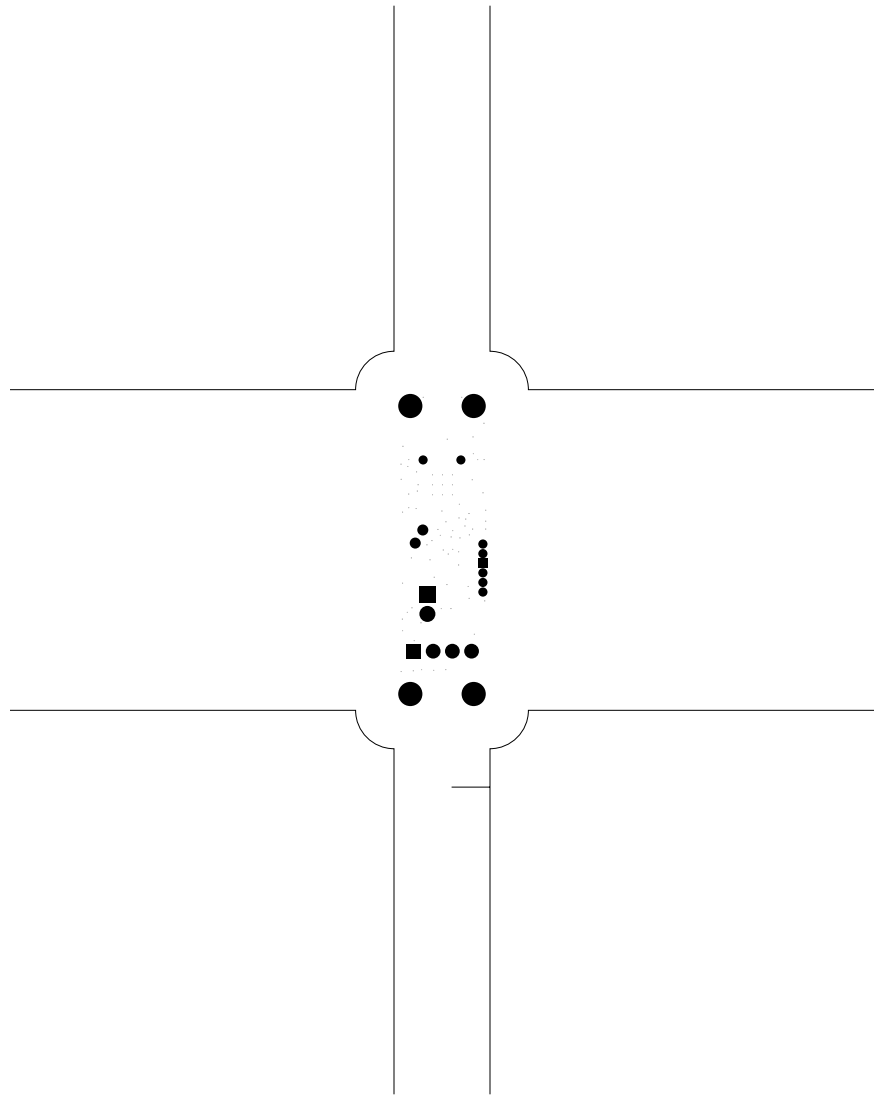




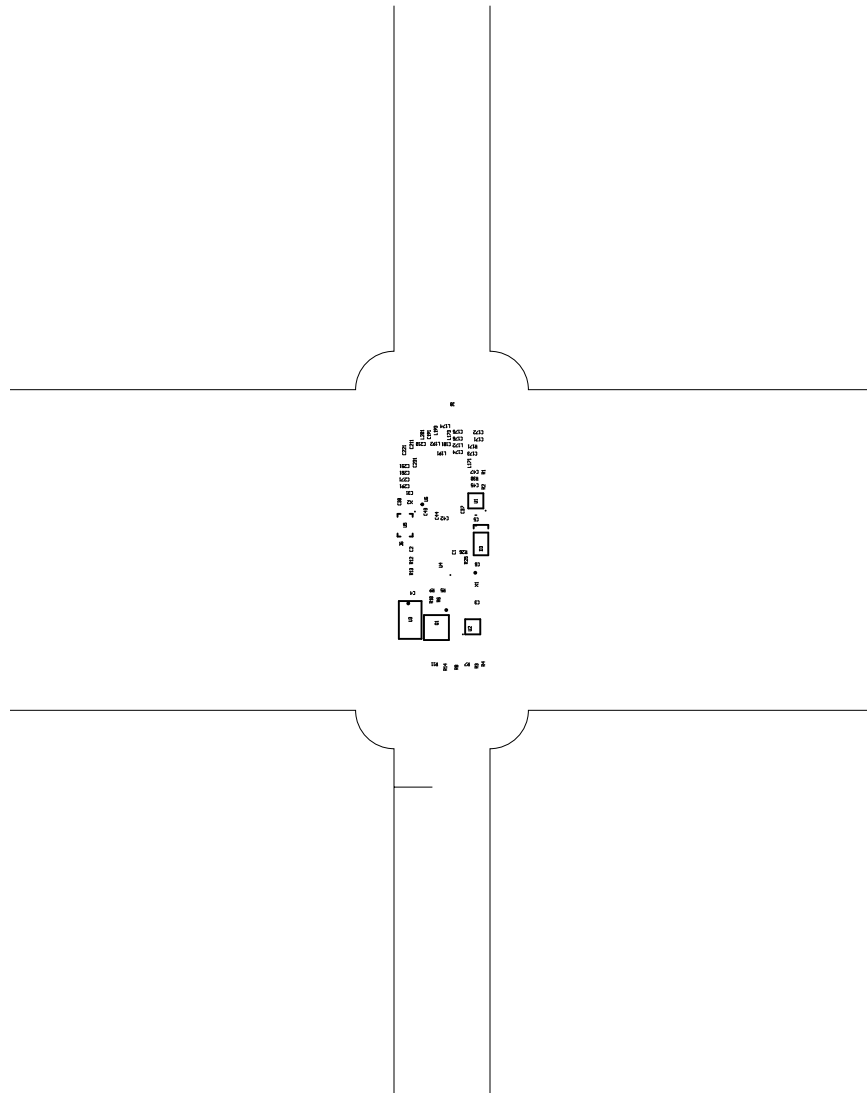


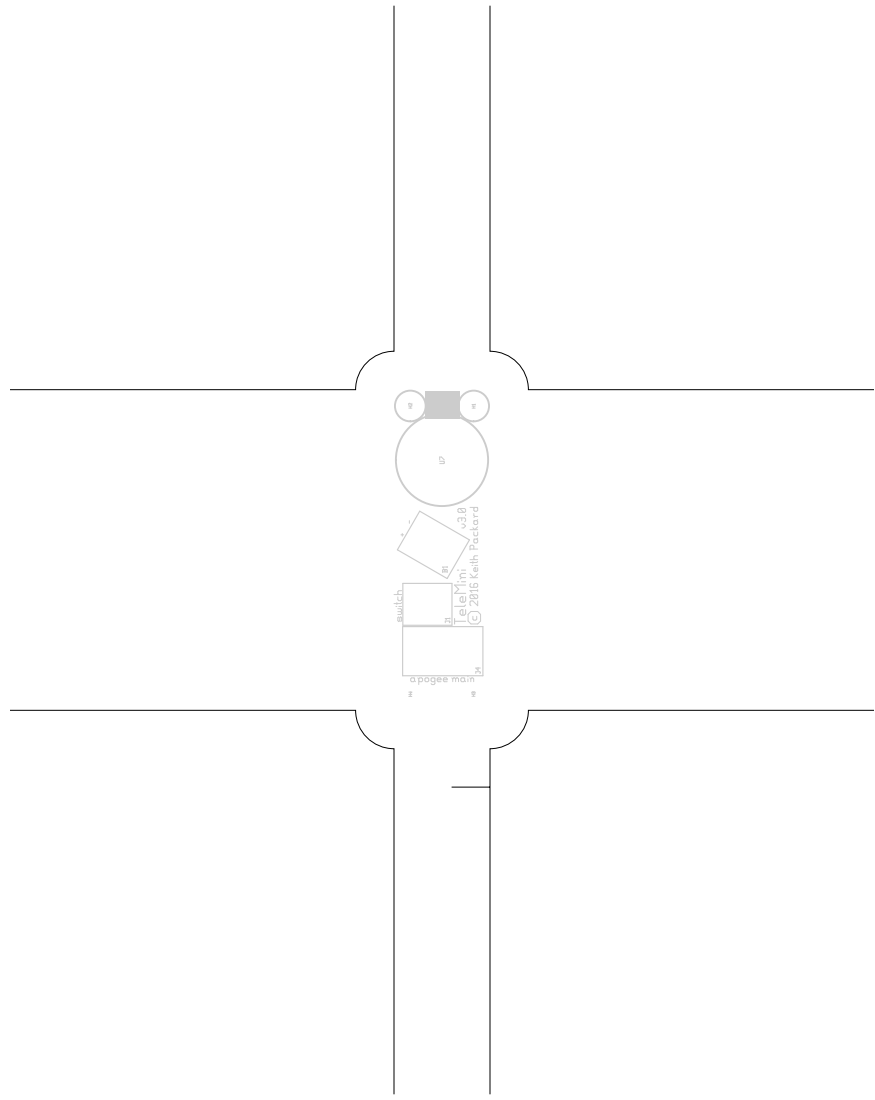


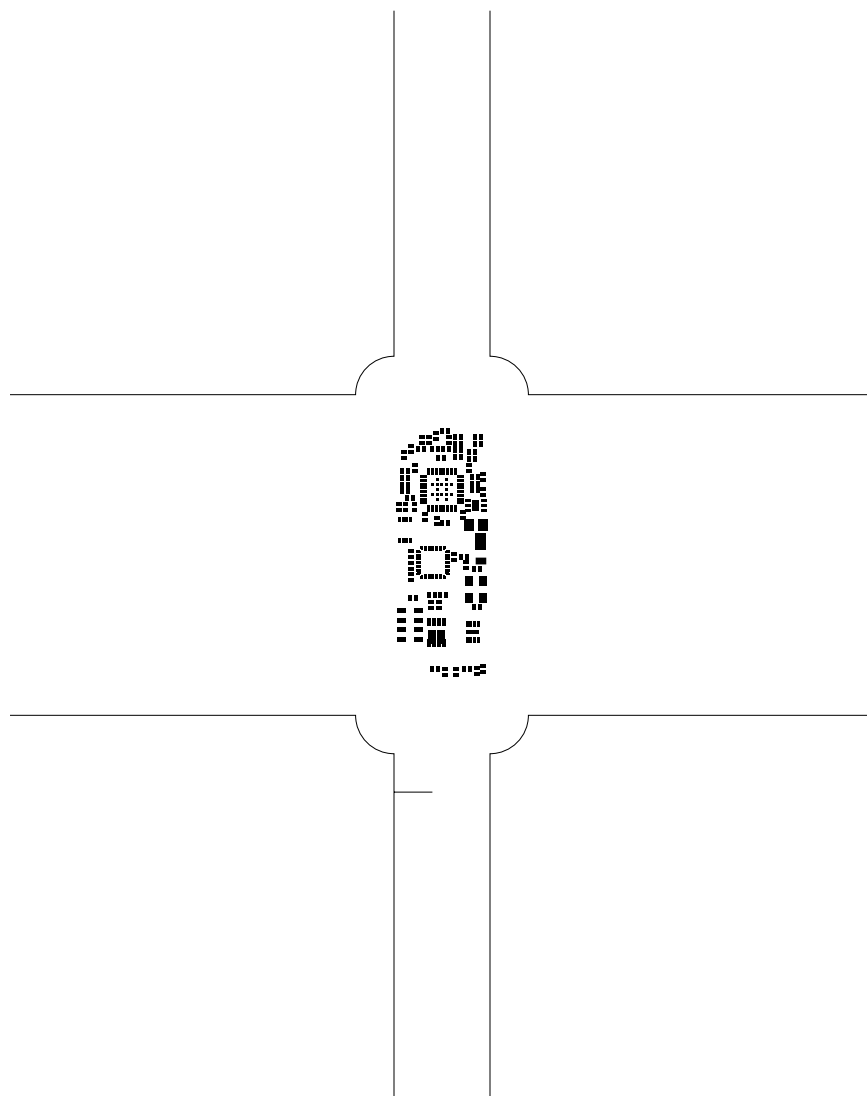


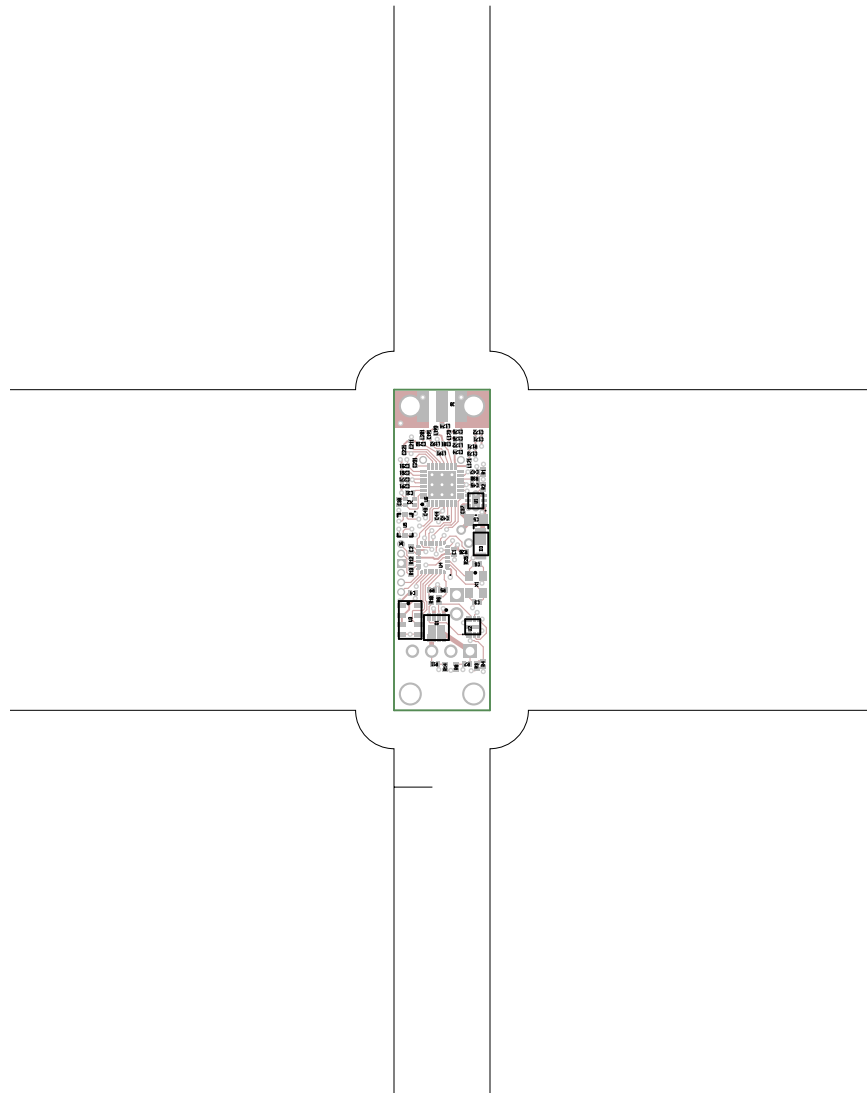


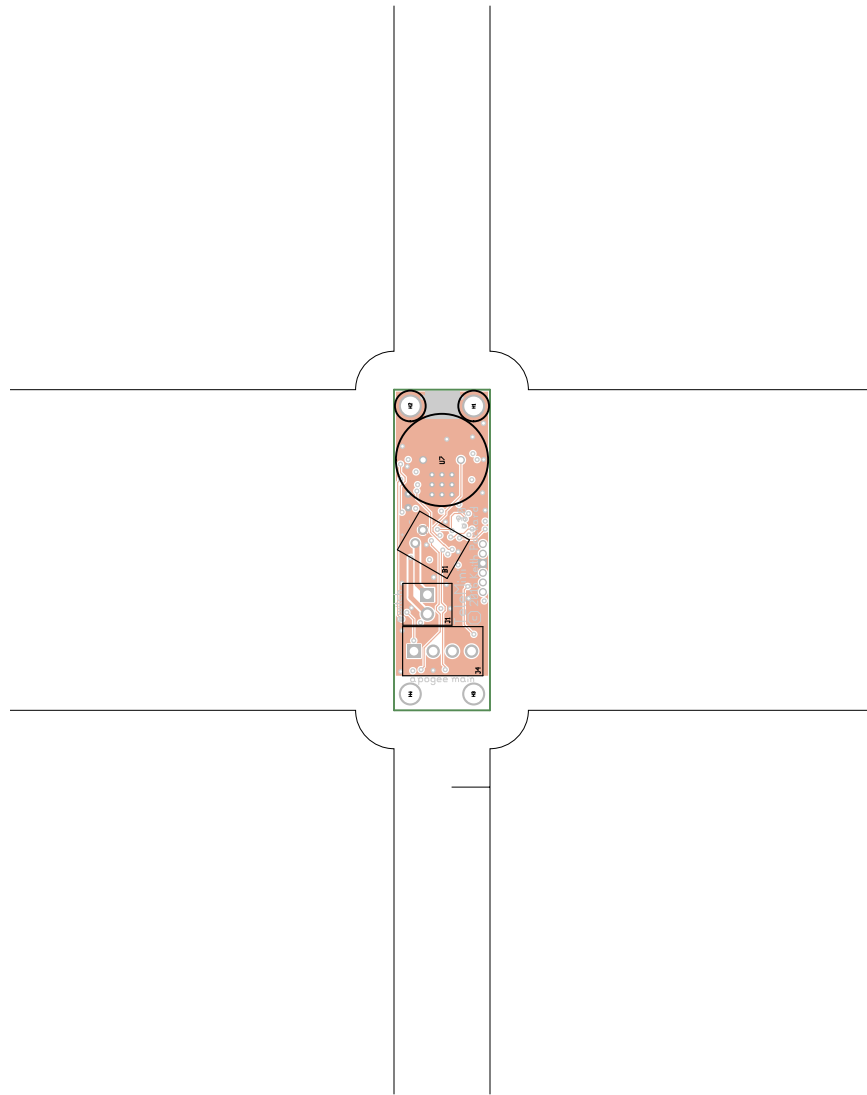
TeleMini, bottommask (mirrored), scale = 1:1.000
telemini.pcb











There are 7 different drill sizes used in this layout, 97 holes total.

Symbol	Diam. (Inch)	Count	Plated?
γ	0.013	62	YES
+	0.015	15	YES
x	0.028	2	YES
o	0.028	6	YES
□	0.030	2	YES
ψ	0.045	6	YES
#	0.098	4	YES

Title: TeleMini - Fabrication Drawing
 Author: Bdale Garbee
 Date: Wed May 8 15:23:41 2019 UTC



Board outline is the centerline of this path