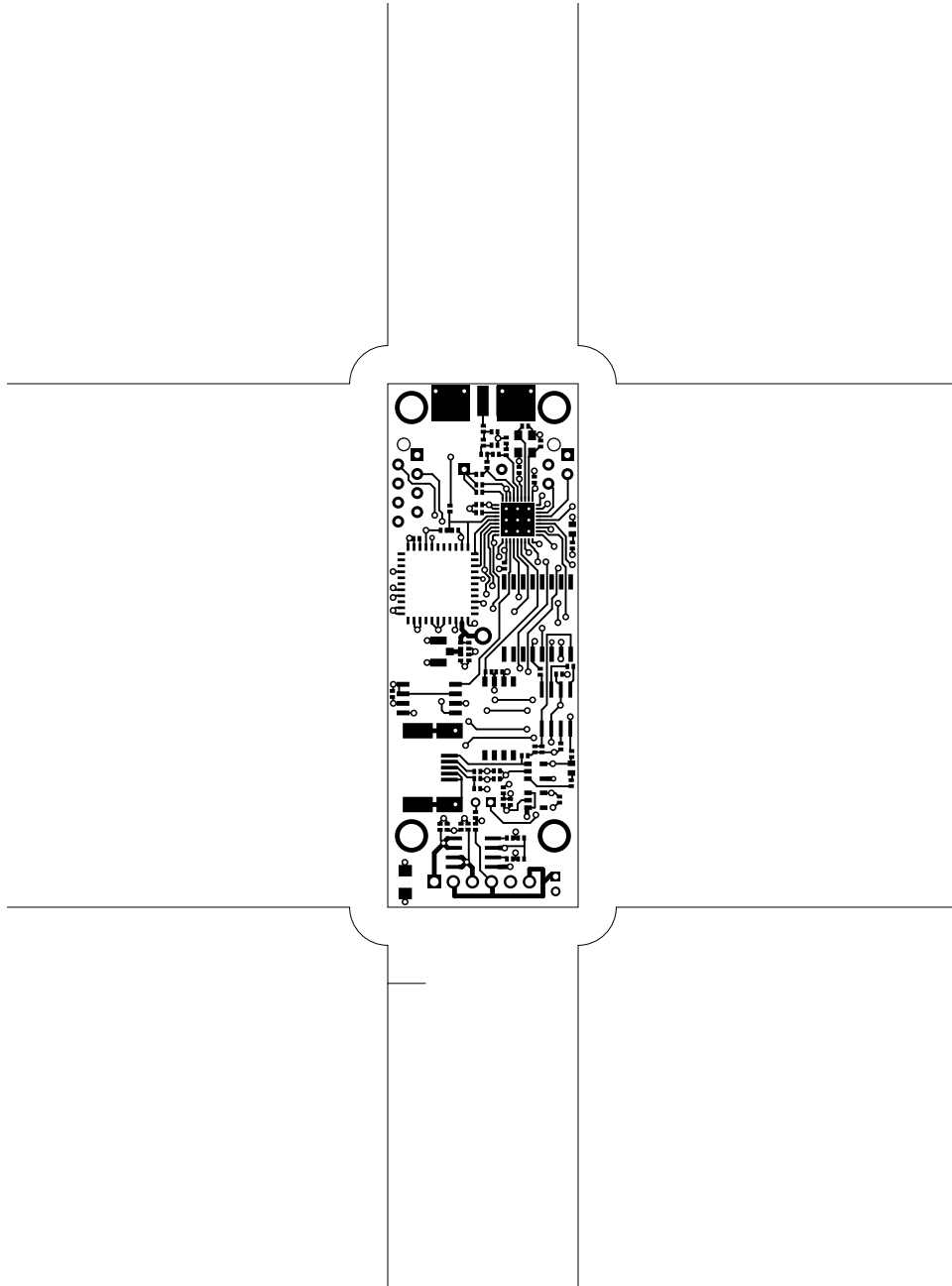
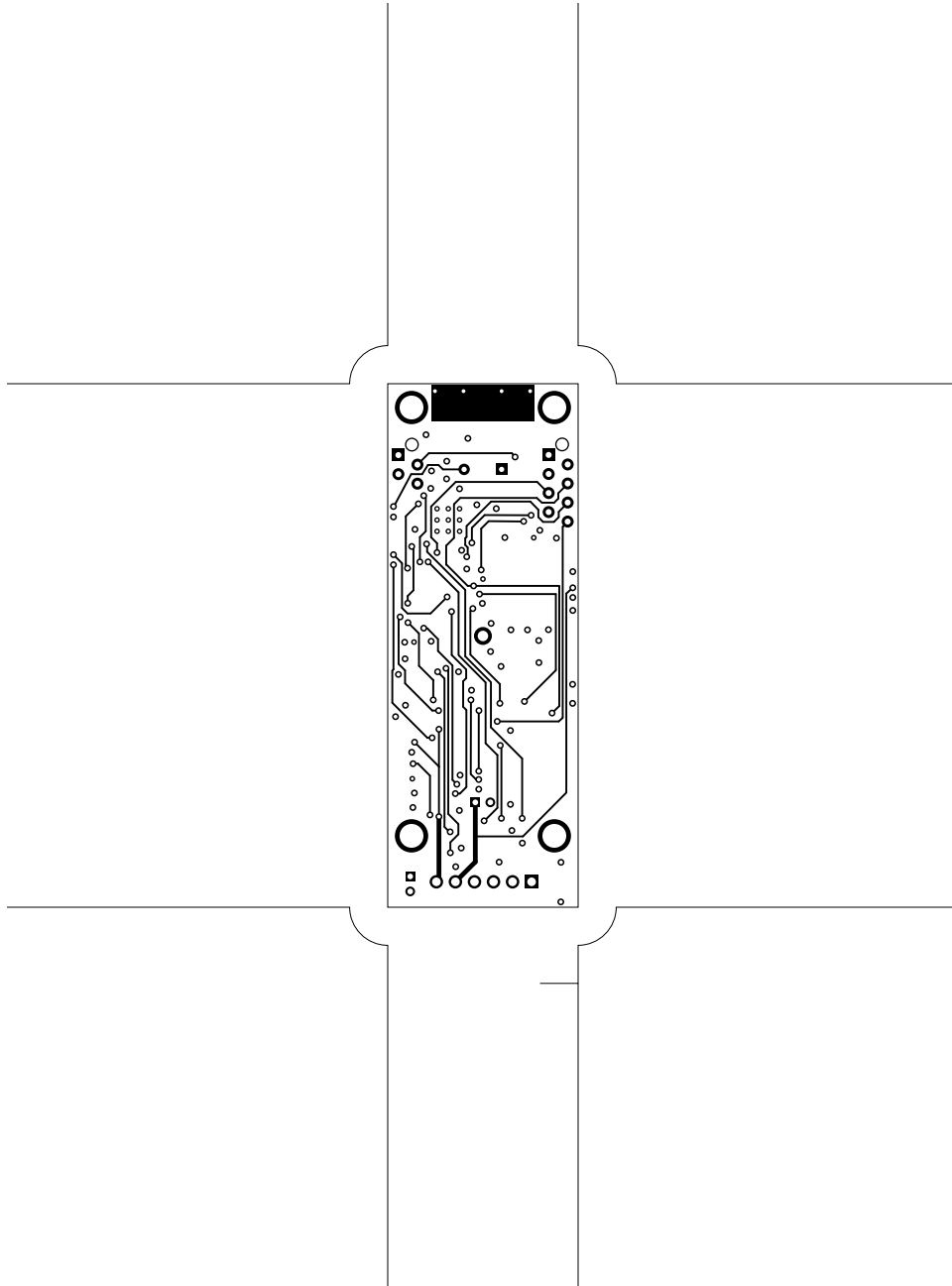
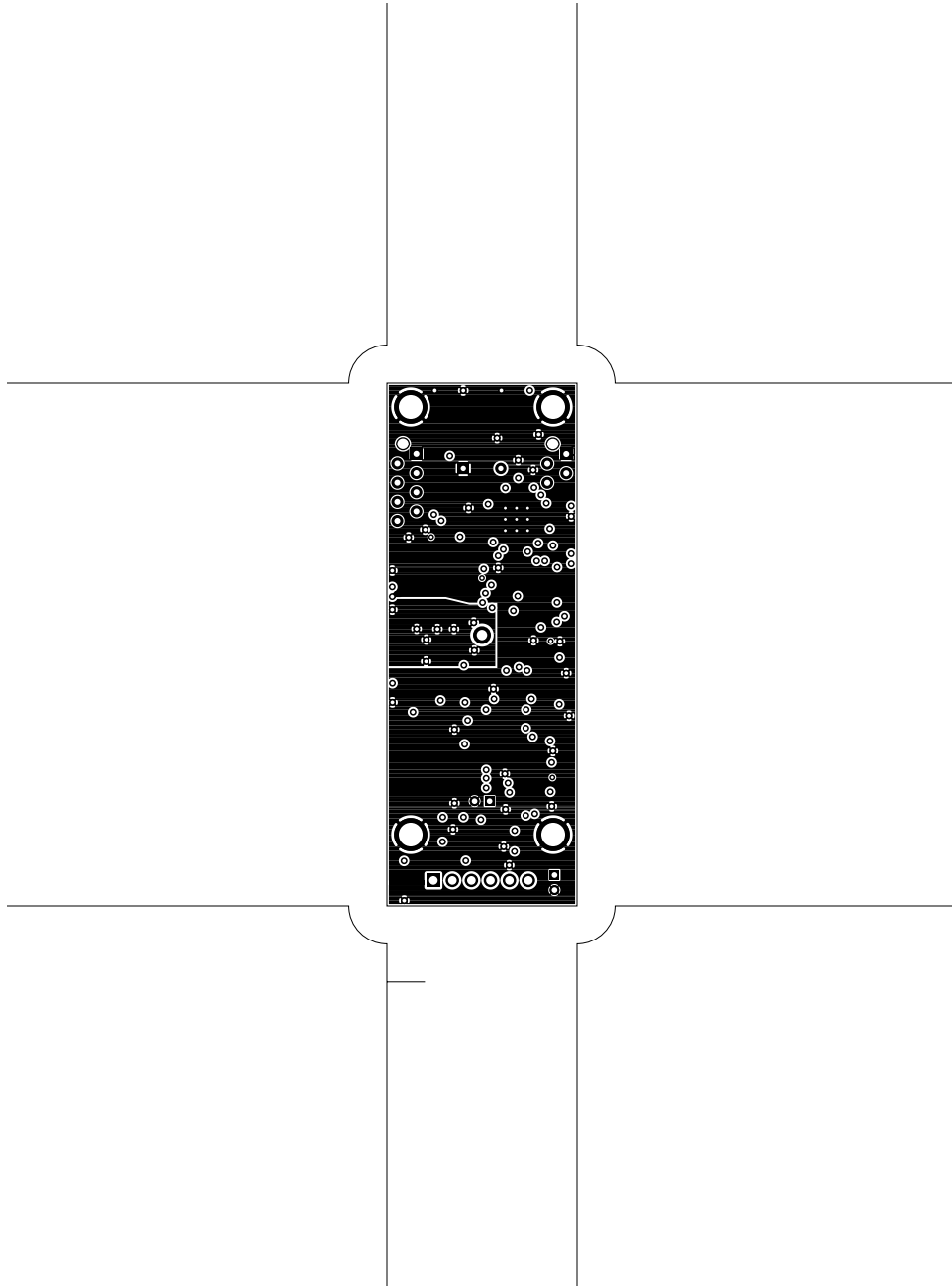
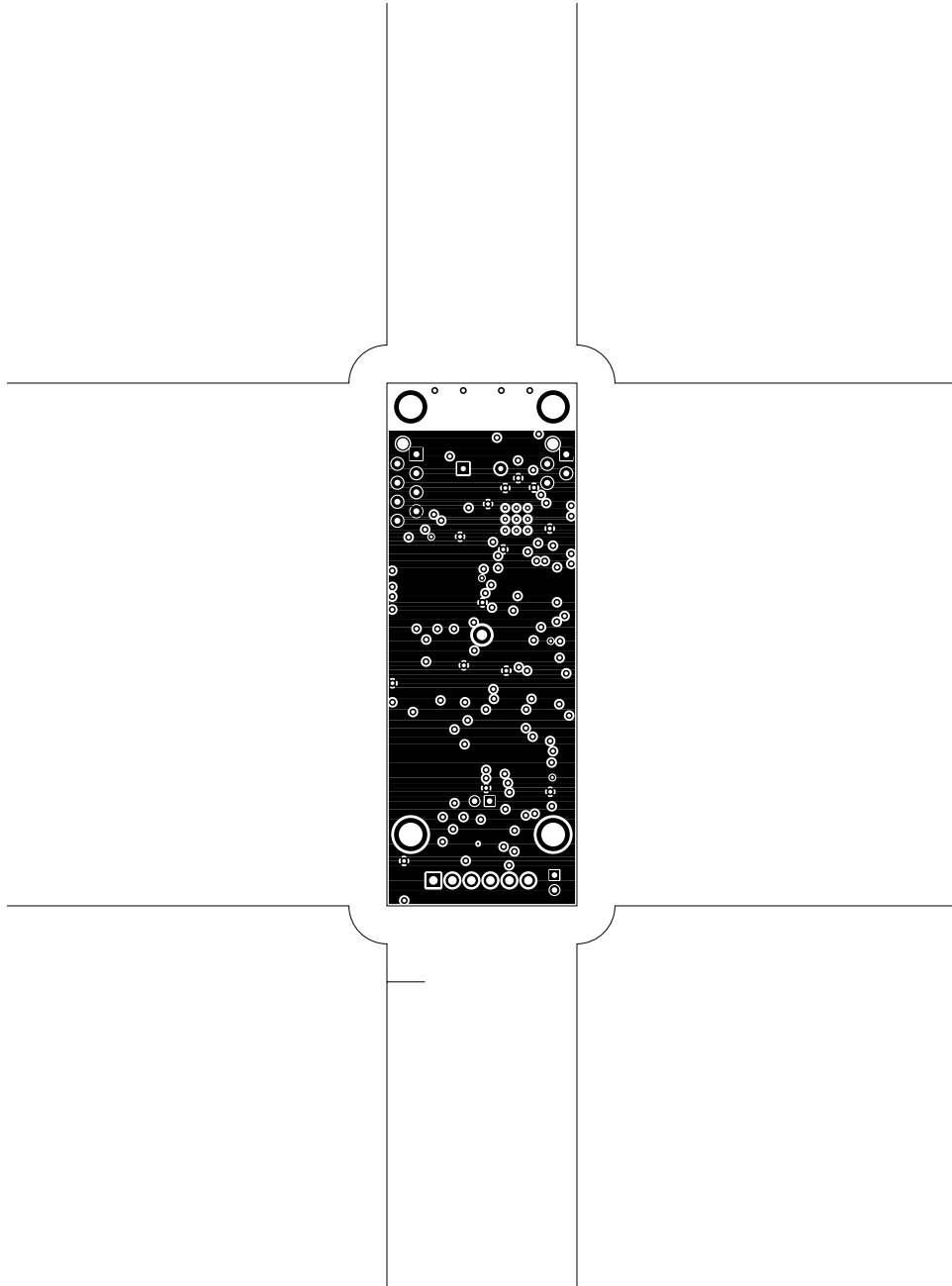


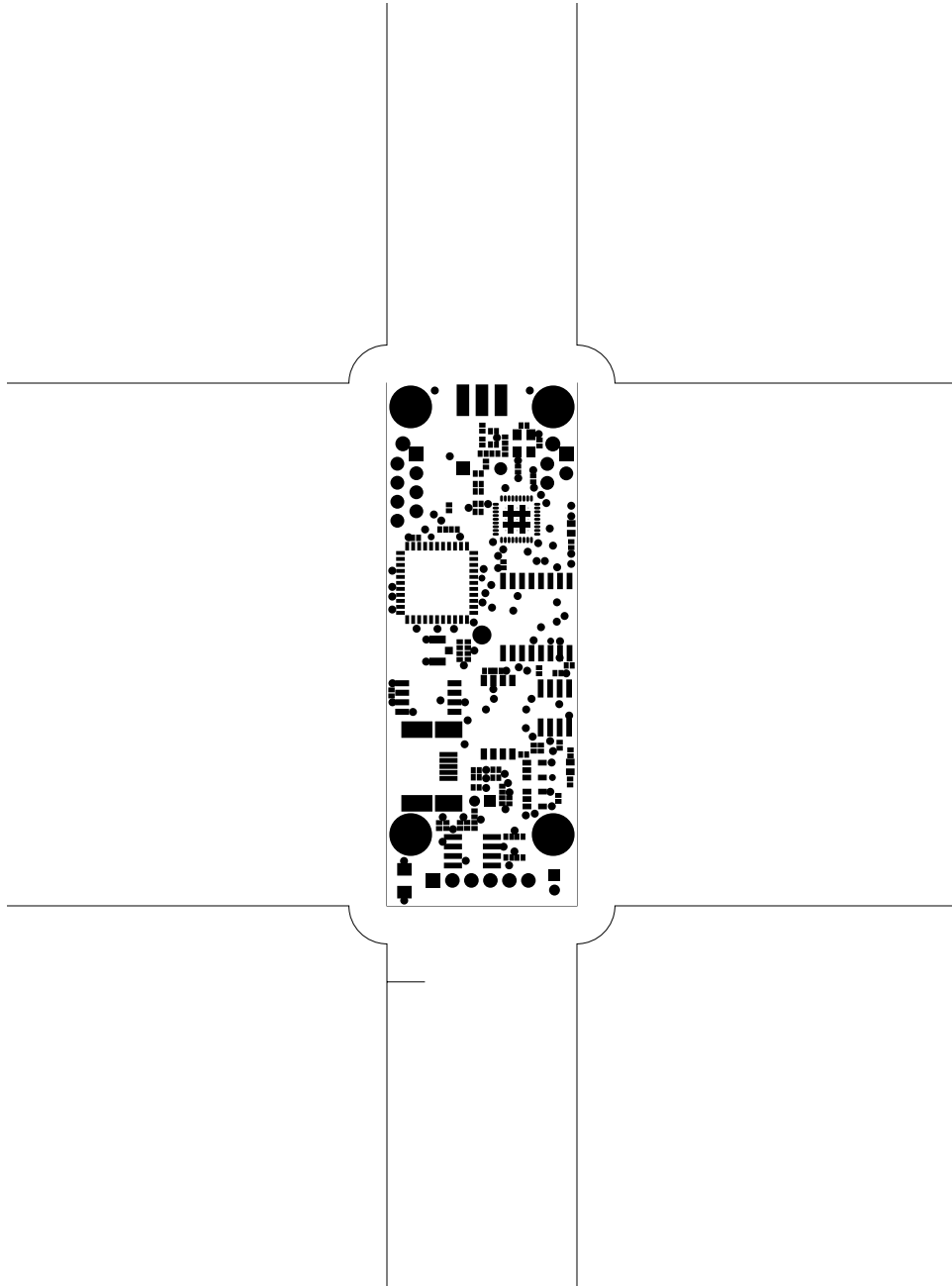
2. top
3. bottom
4. GND plane
5. power plane
6. componentmask
7. soldermask
8. plated-drill
9. topsilk
10. bottomsilk
11. toppaste
12. topassembly
13. bottomassembly
14. fab

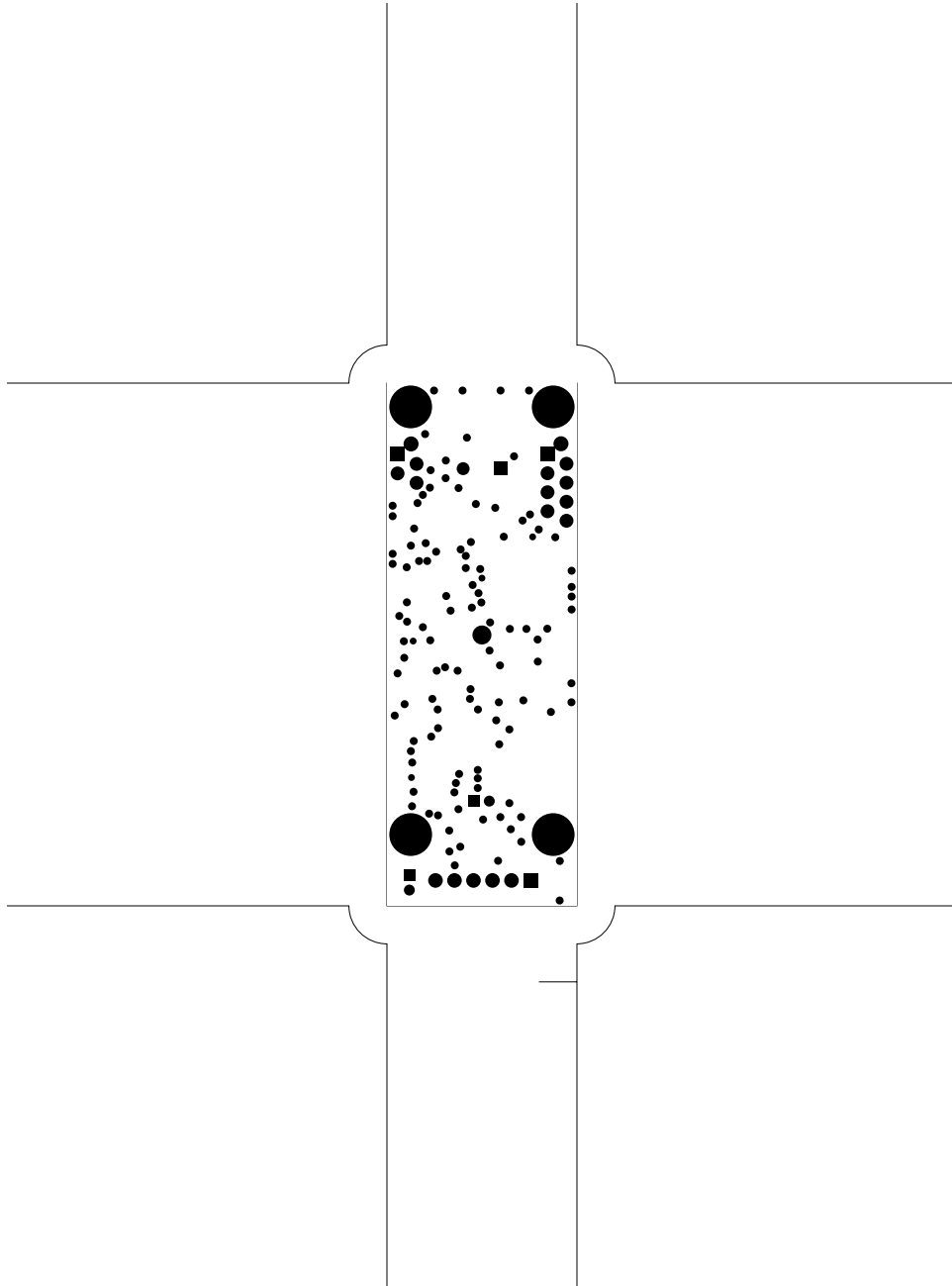


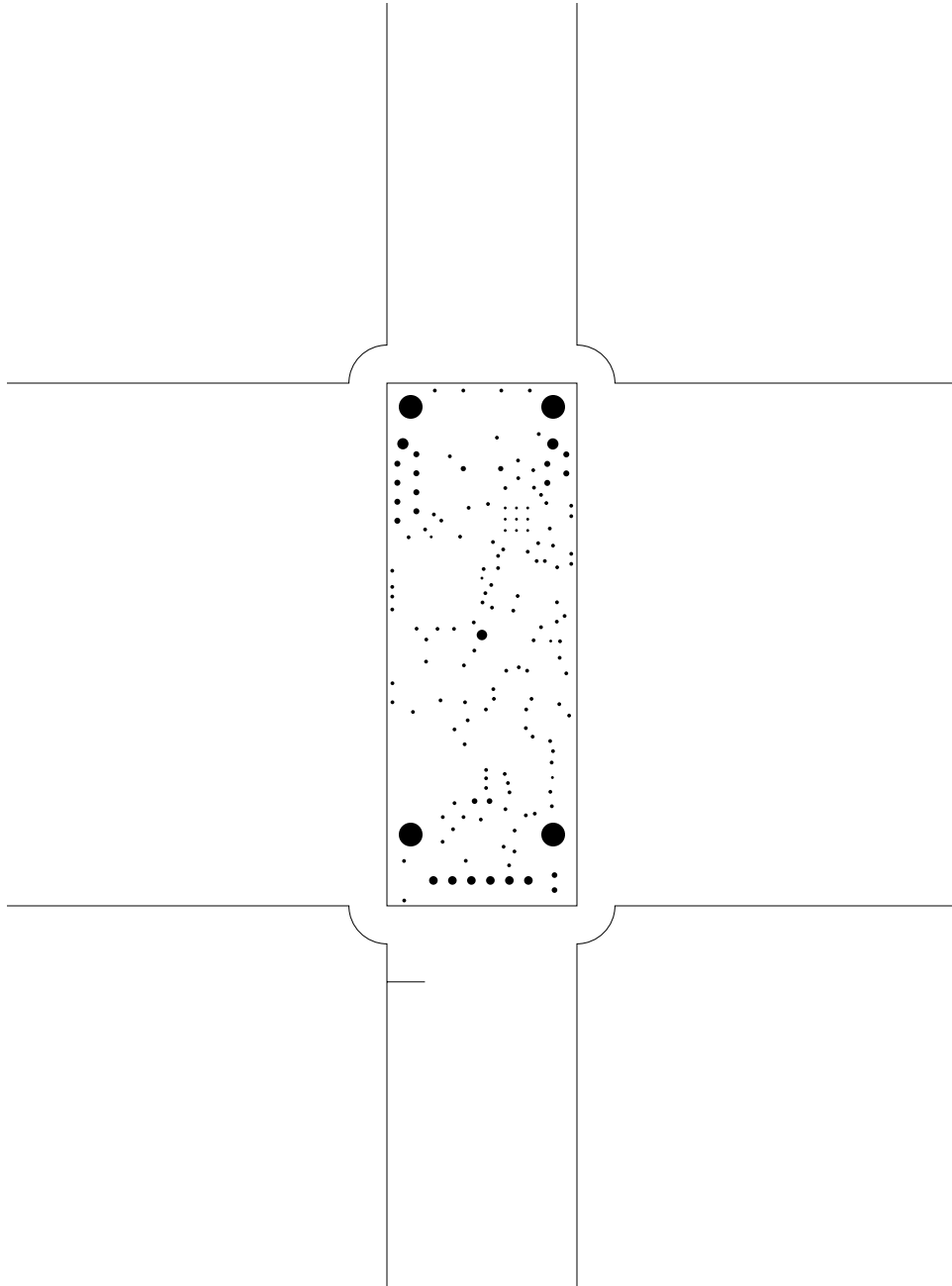




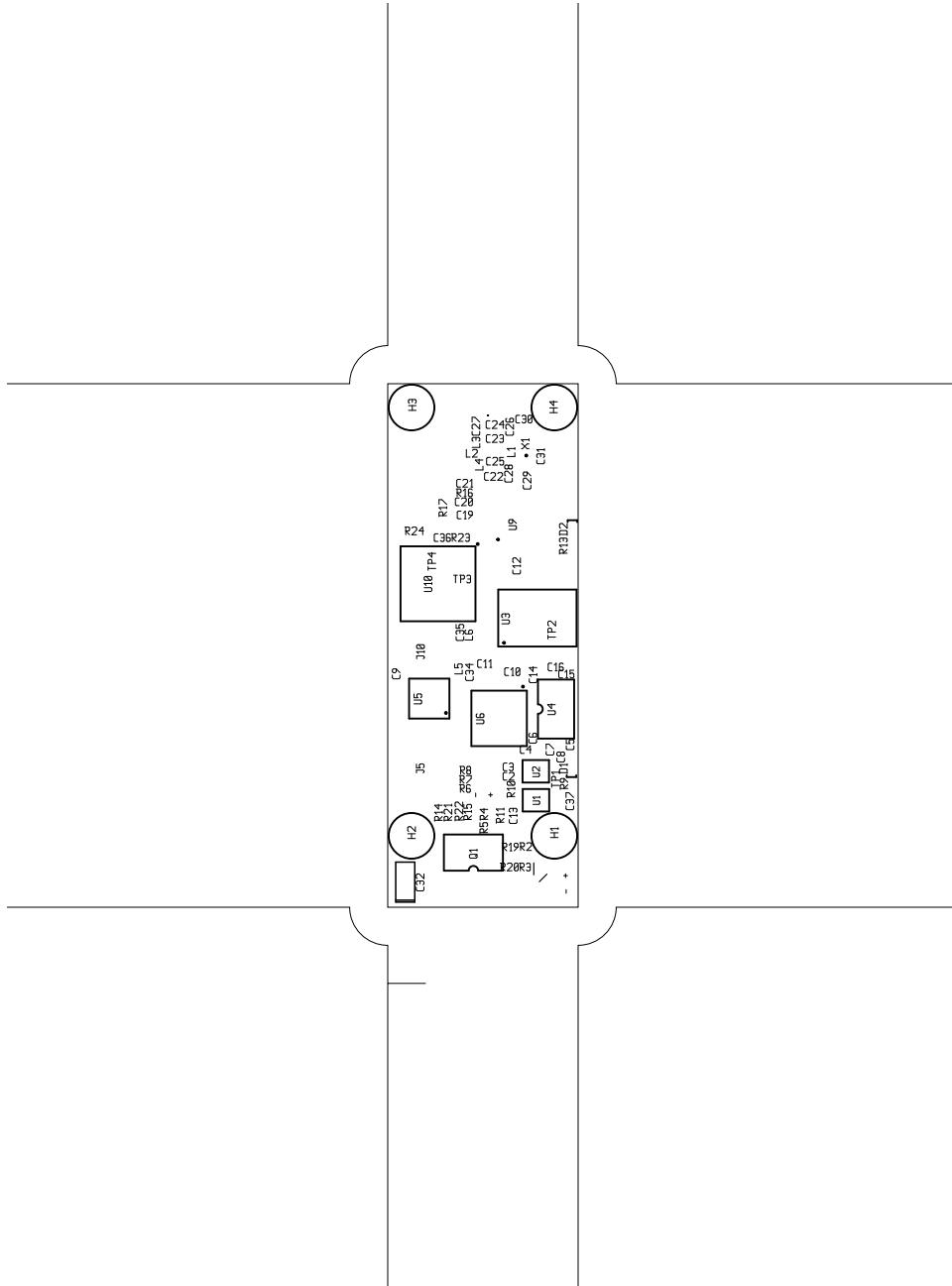


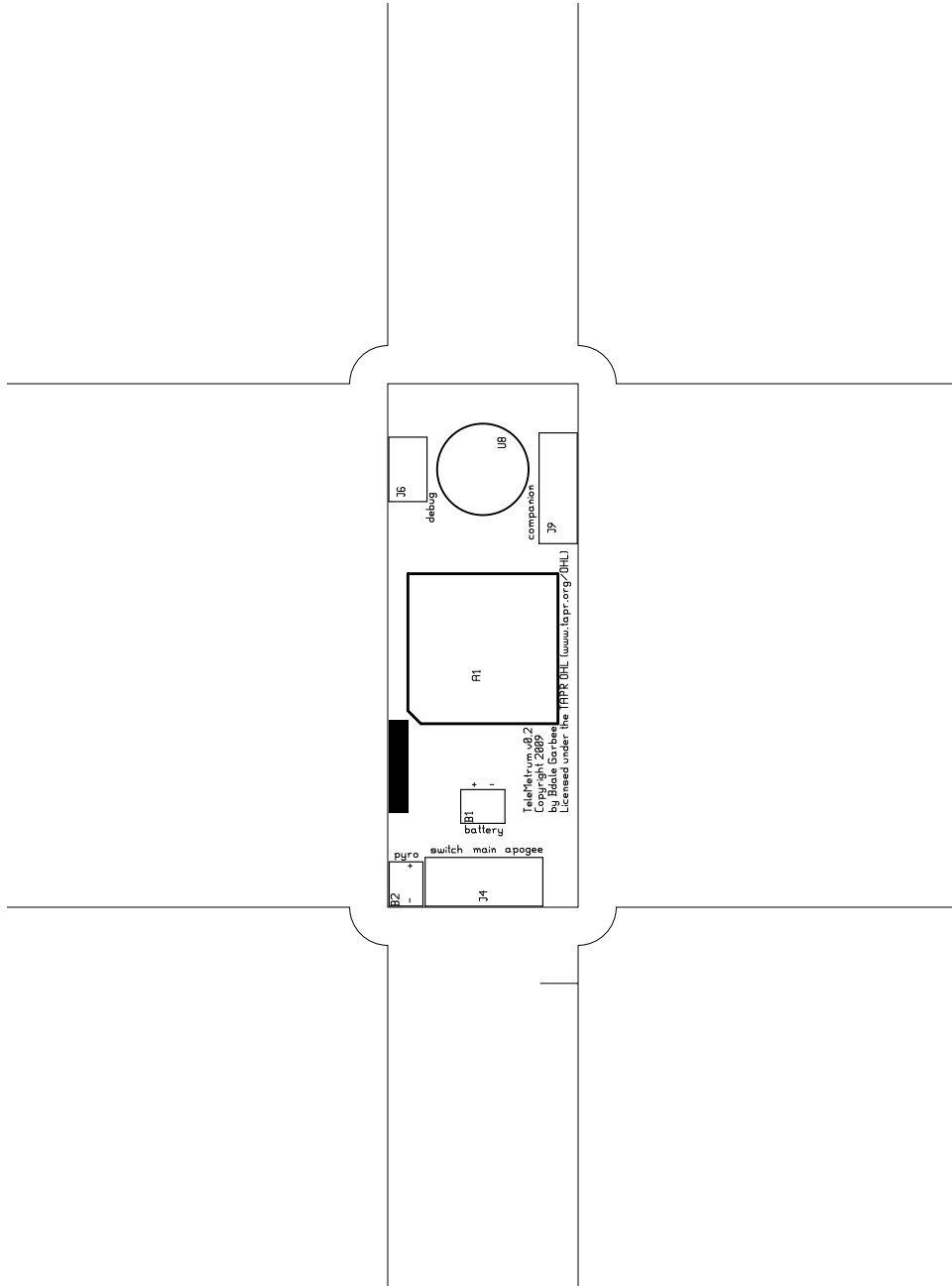


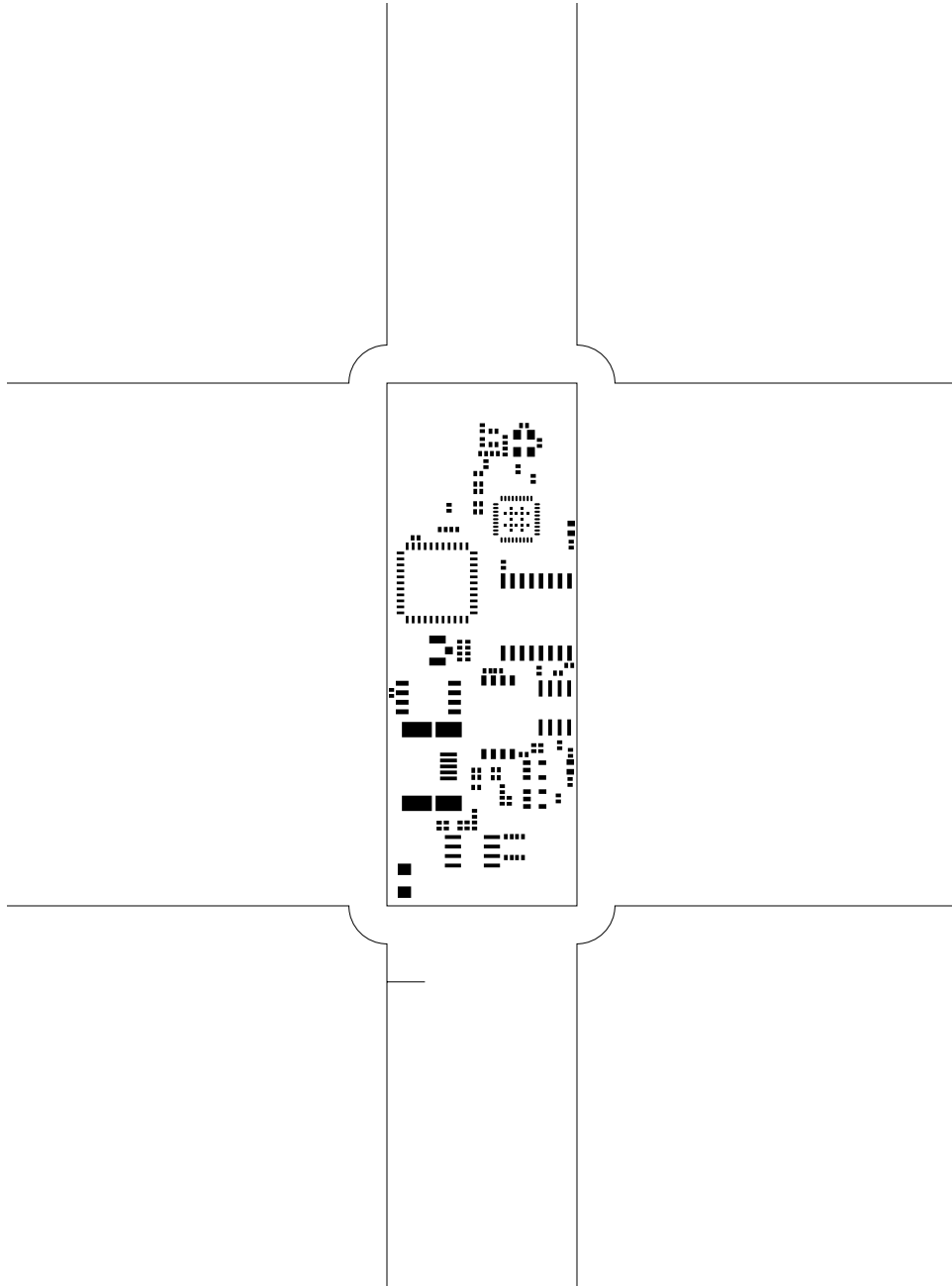


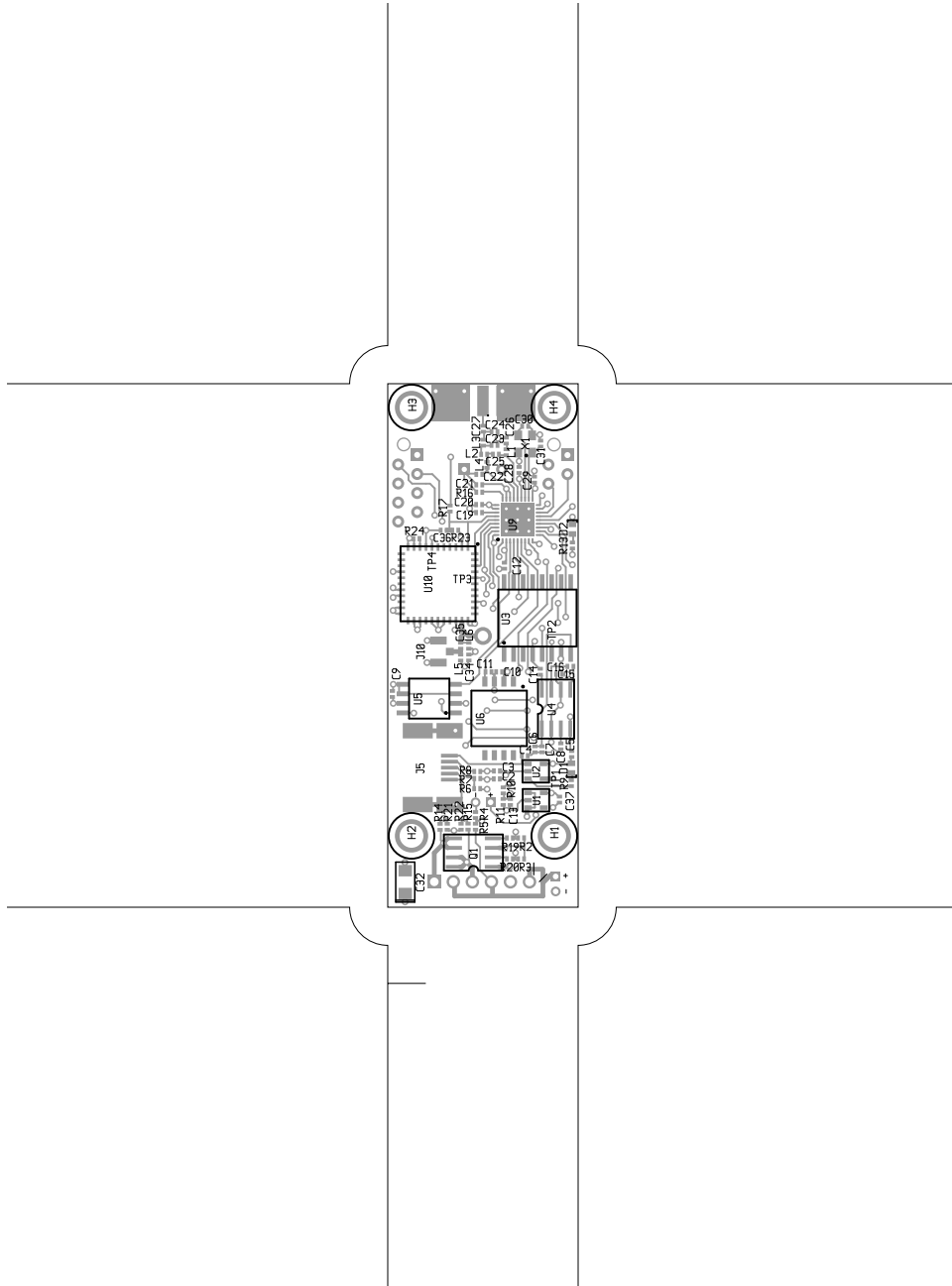




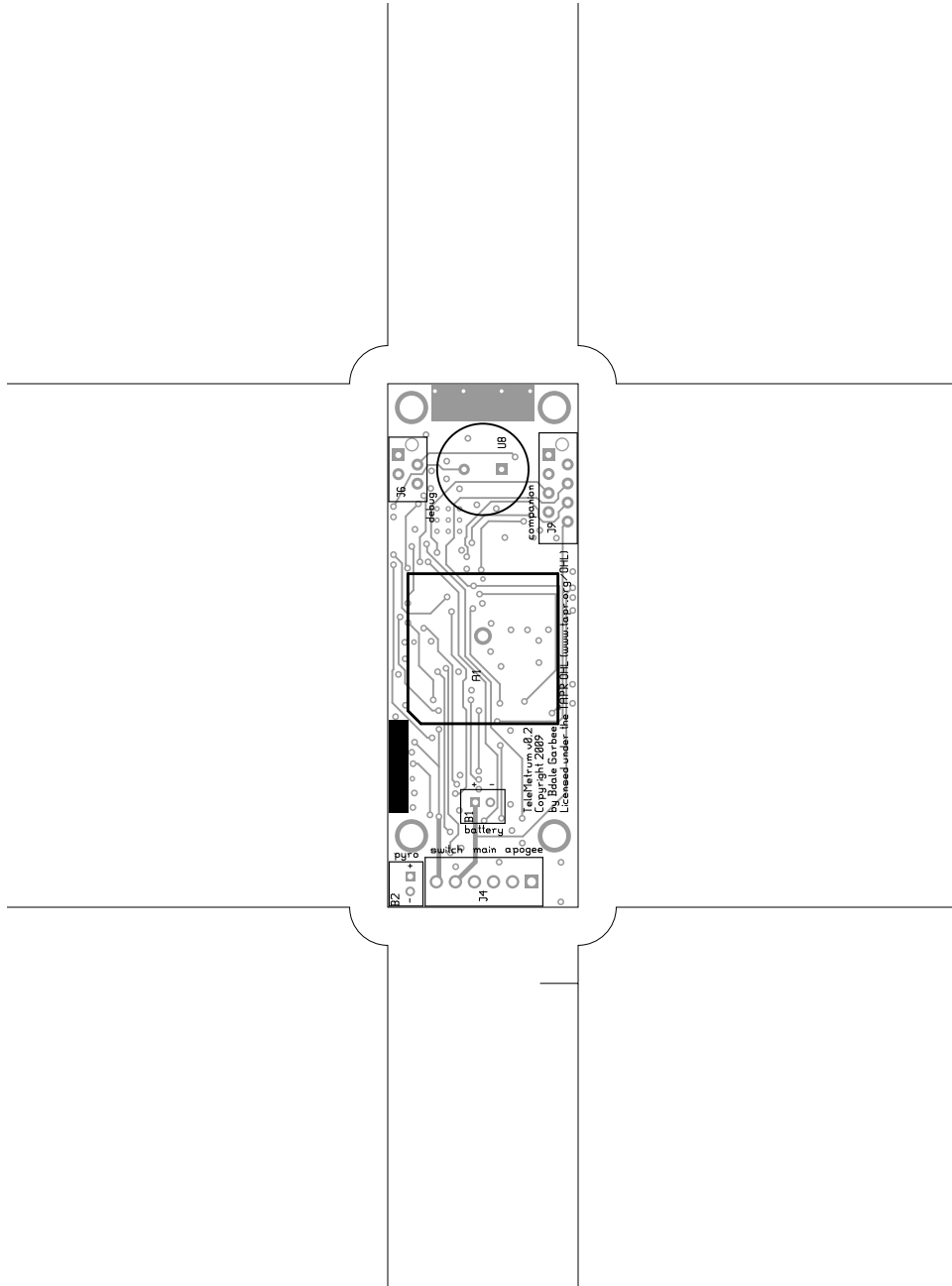








TeleMetrum, frontassembly, scale = 1:1.000  
telemetrum.pcb



TeleMetrum, backassembly (mirrored), scale = 1:1.000  
telemetrum.pcb

There are 9 different drill sizes used in this layout, 154 holes total

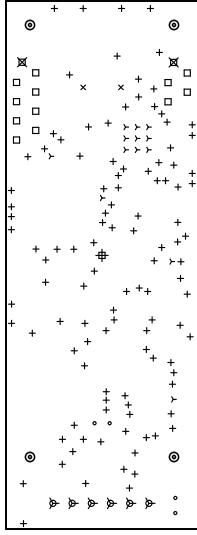
Symbol	Diam. (Inch)	Count	Plated?
γ	0.015	13	YES
+	0.020	110	YES
x	0.028	2	YES
o	0.030	4	YES
□	0.032	12	YES
▽	0.045	6	YES
⊕	0.055	1	YES
⊗	0.059	2	YES
⊙	0.125	4	YES

Title: TeleMetrum - Fabrication Drawing

Author: Bdale Garbee

Date: Mon 11 Jan 2010 04:56:24 PM GMT UTC

Maximum Dimensions: 2.750 mils wide, 10.000 mils high



Board outline is the centerline of this 10 mil rectangle - 0.0 to 2.750, 10.000 mils