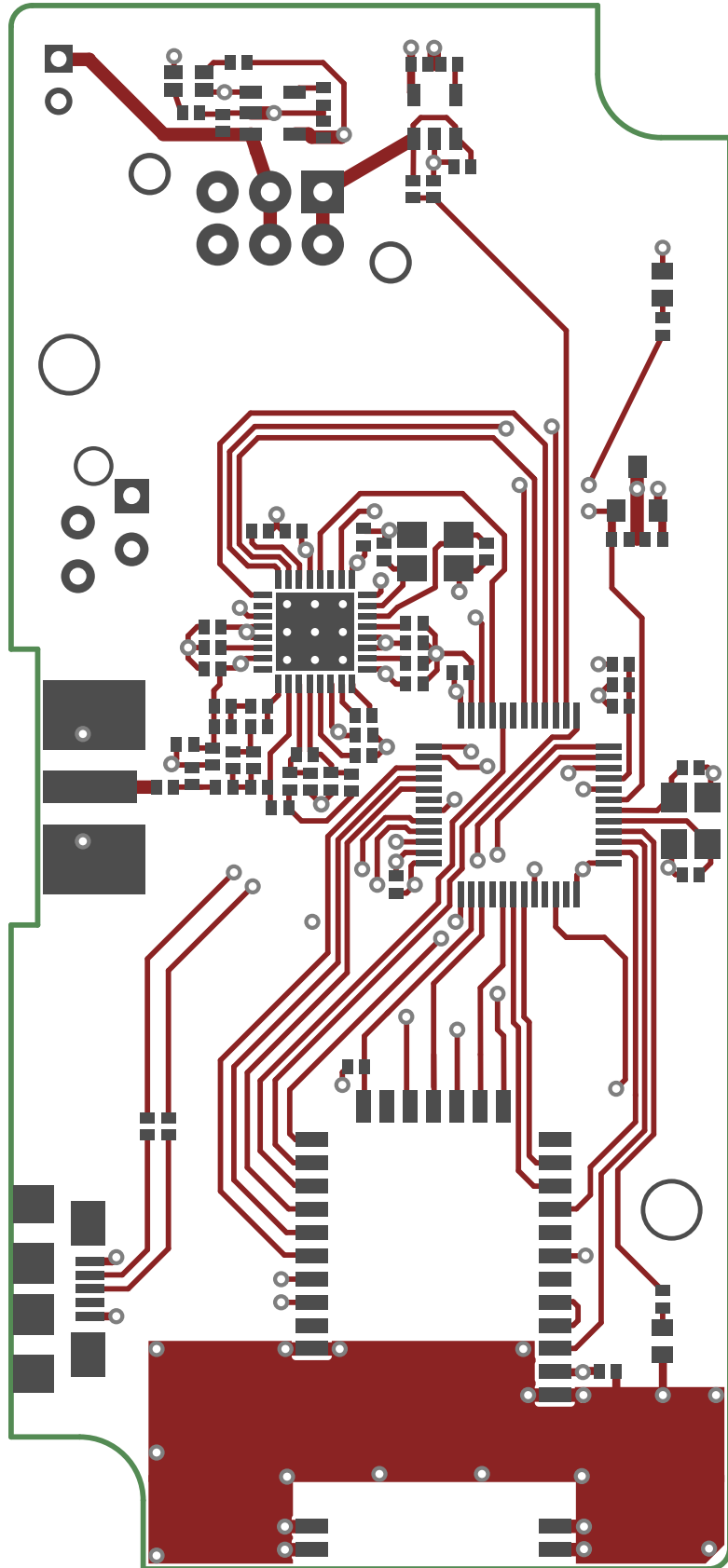


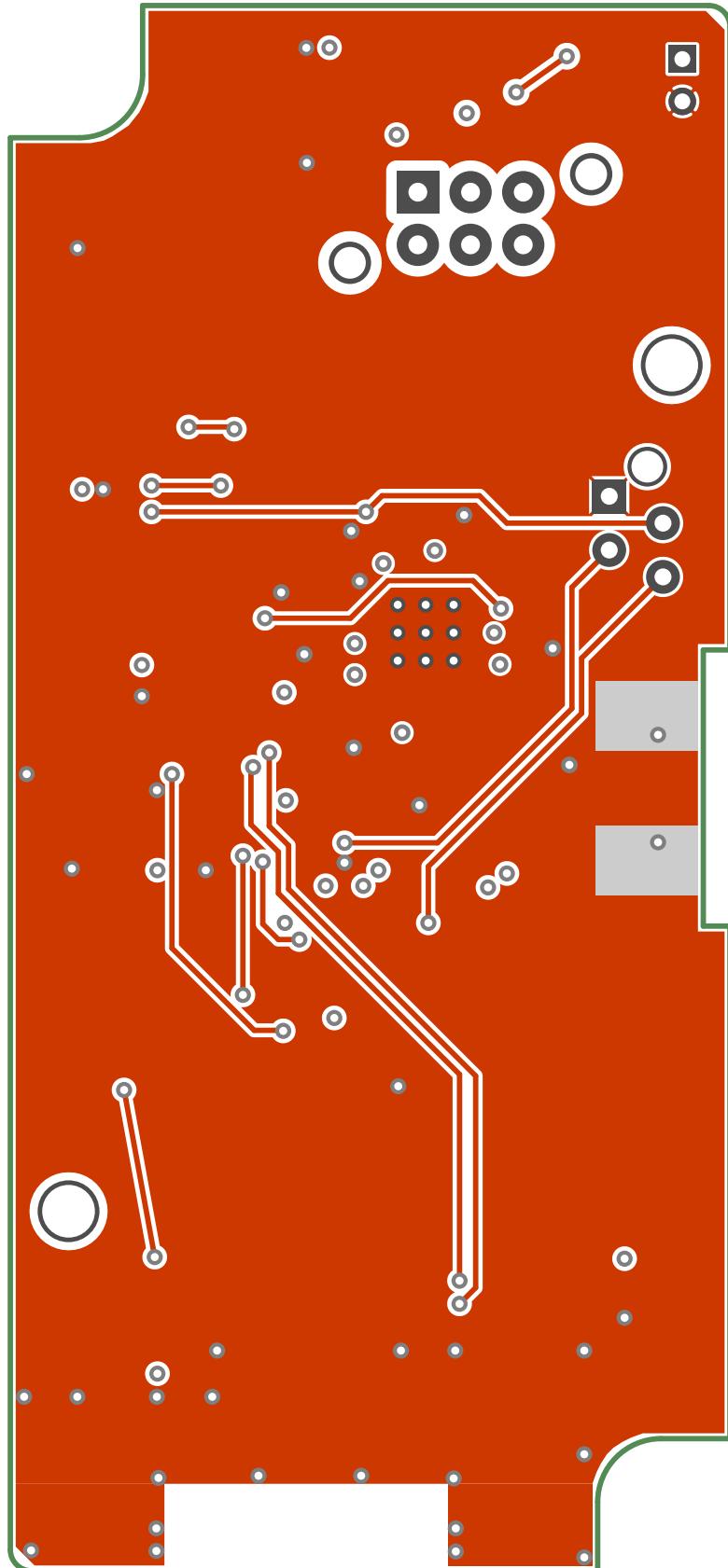
1. Table of Contents (This Page)

Created on Thu Dec 13 18:11:28 2018

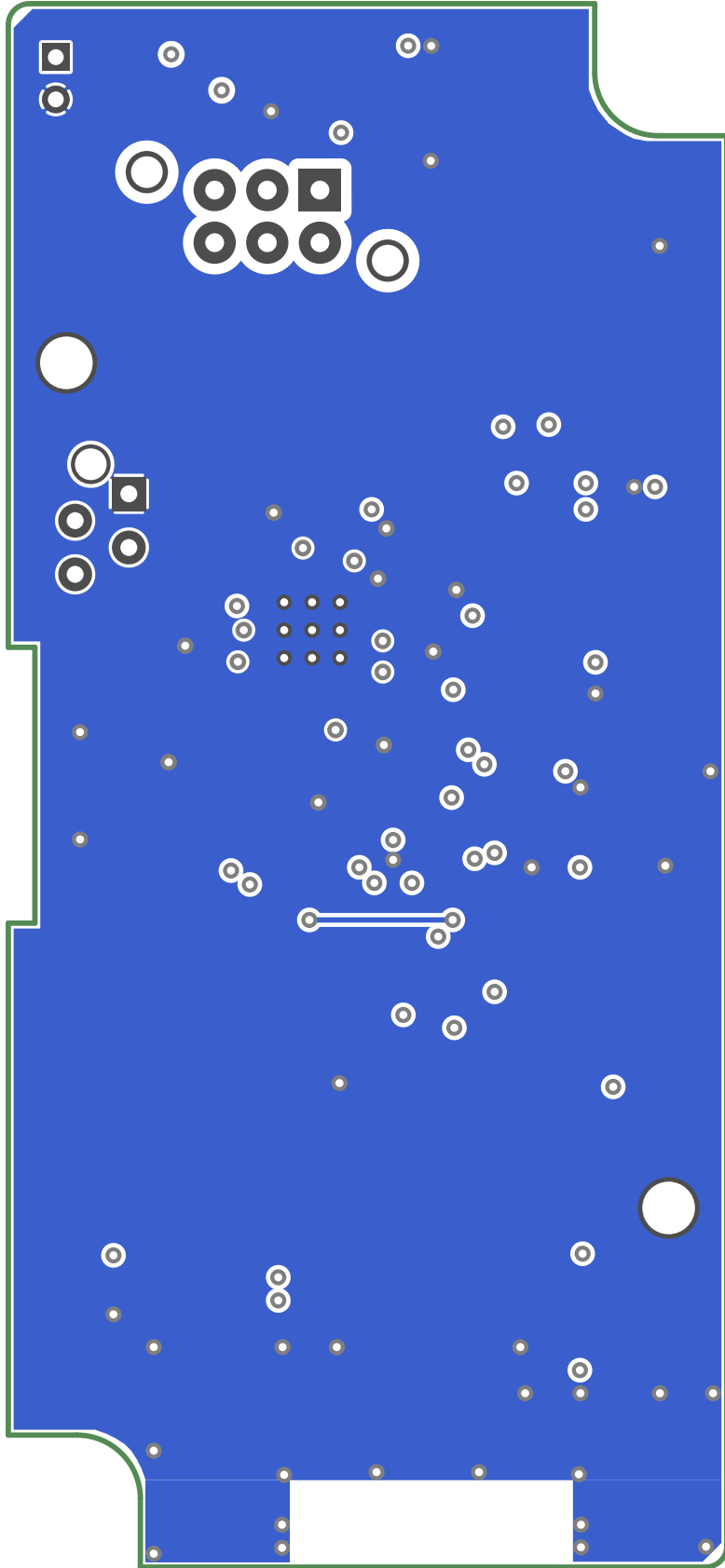
2. top
3. bottom
4. GND plane
5. power plane
6. outline
7. plated-drill
8. componentmask
9. soldermask
10. topsilk
11. bottomsilk
12. toppaste
13. topassembly
14. bottomassembly
15. fab



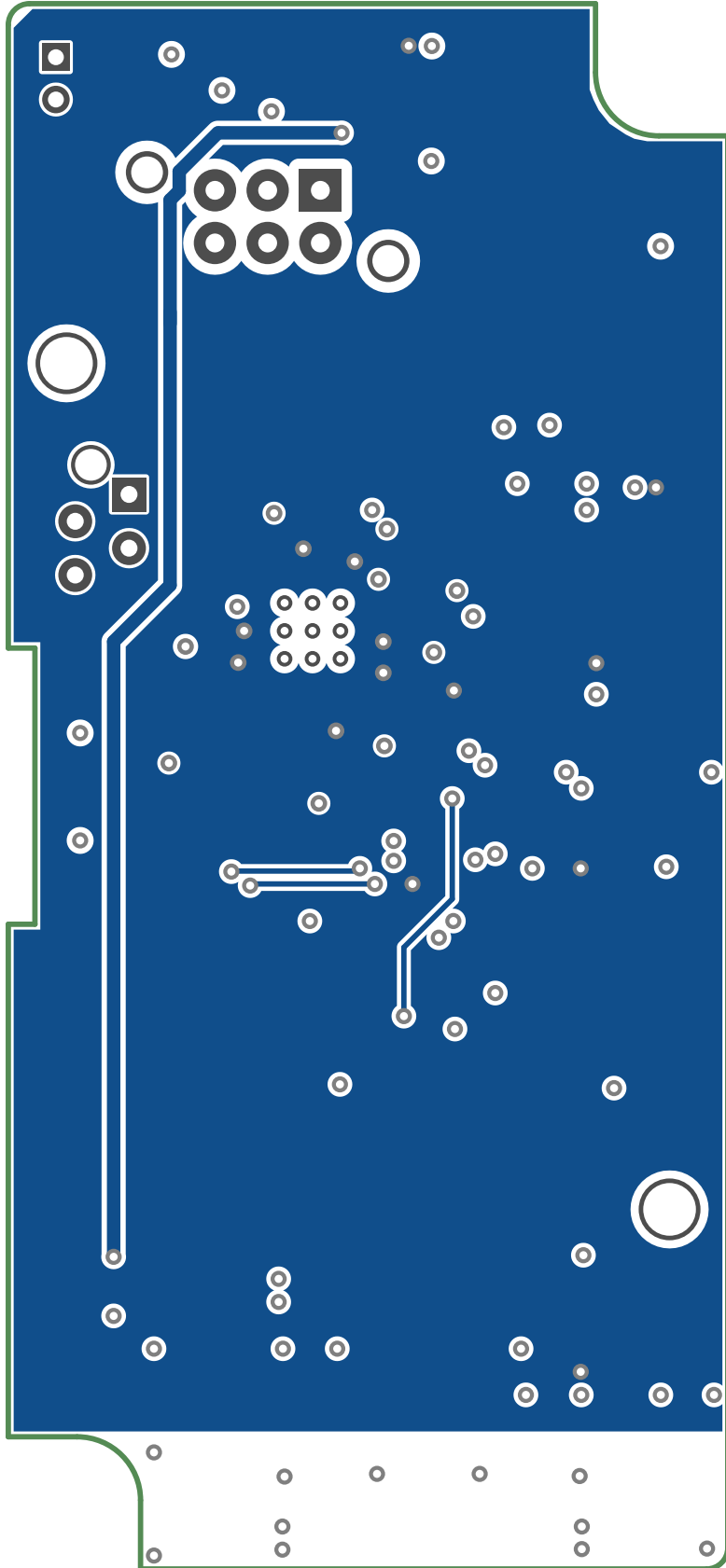
TeleBT, top, not to scale
telebt.pcb



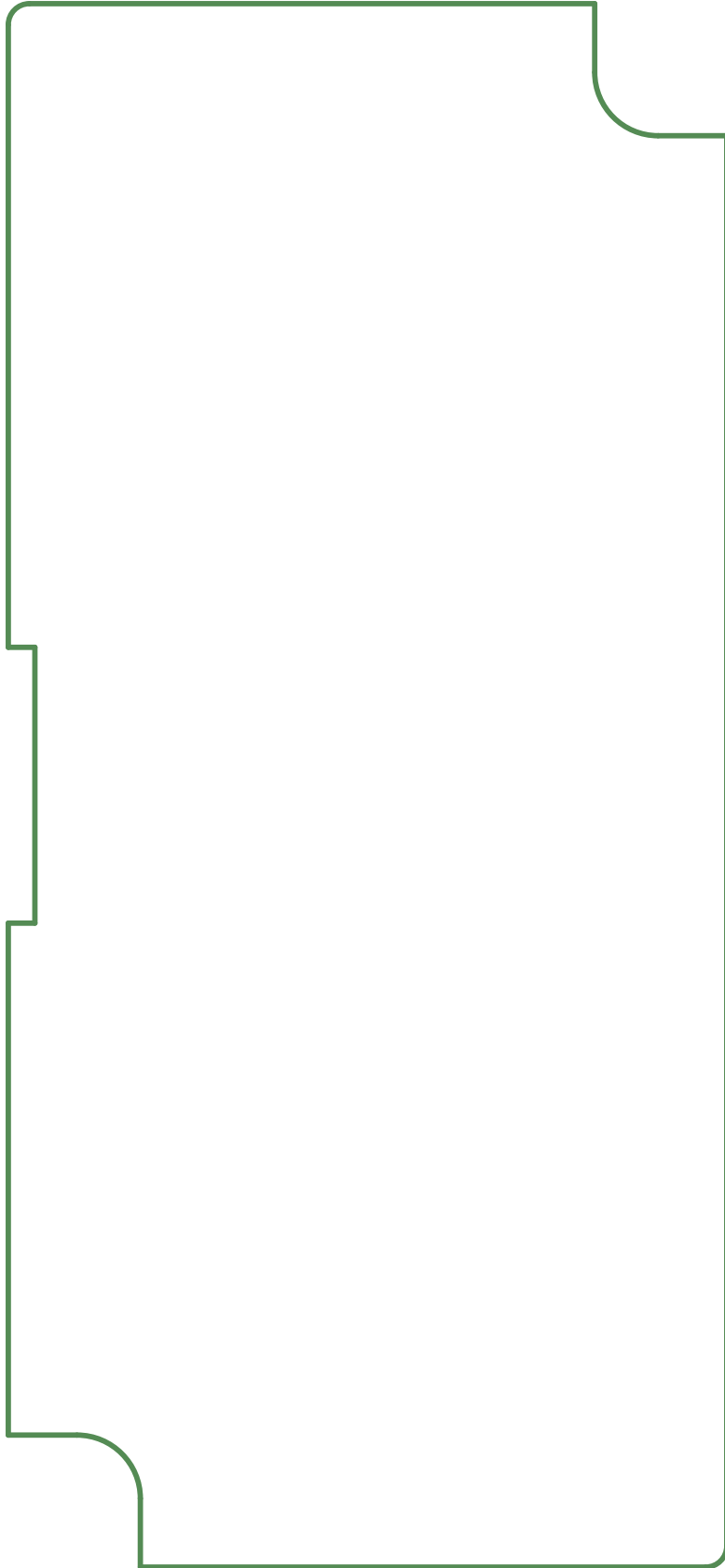
TeleBT, bottom (mirrored), not to scale
telebt.pcb

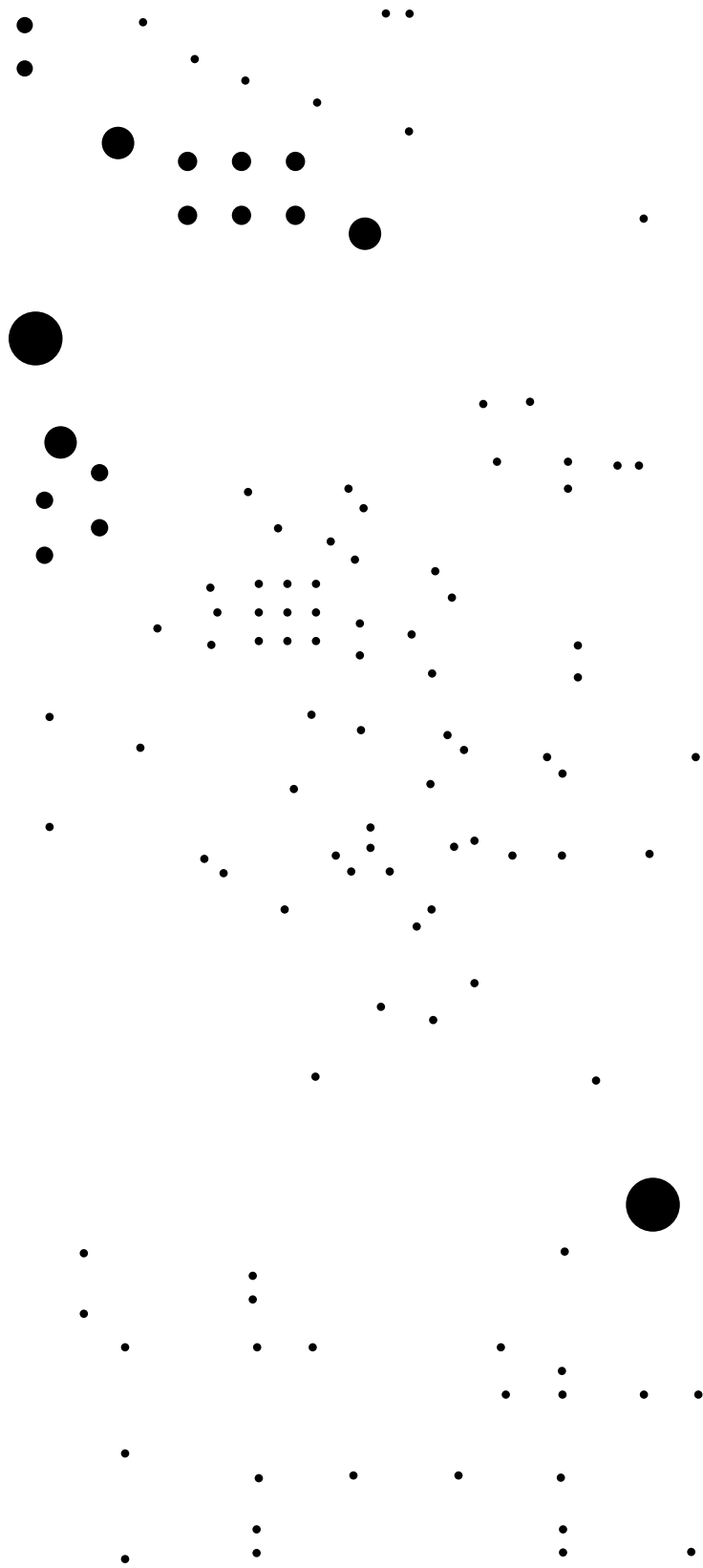


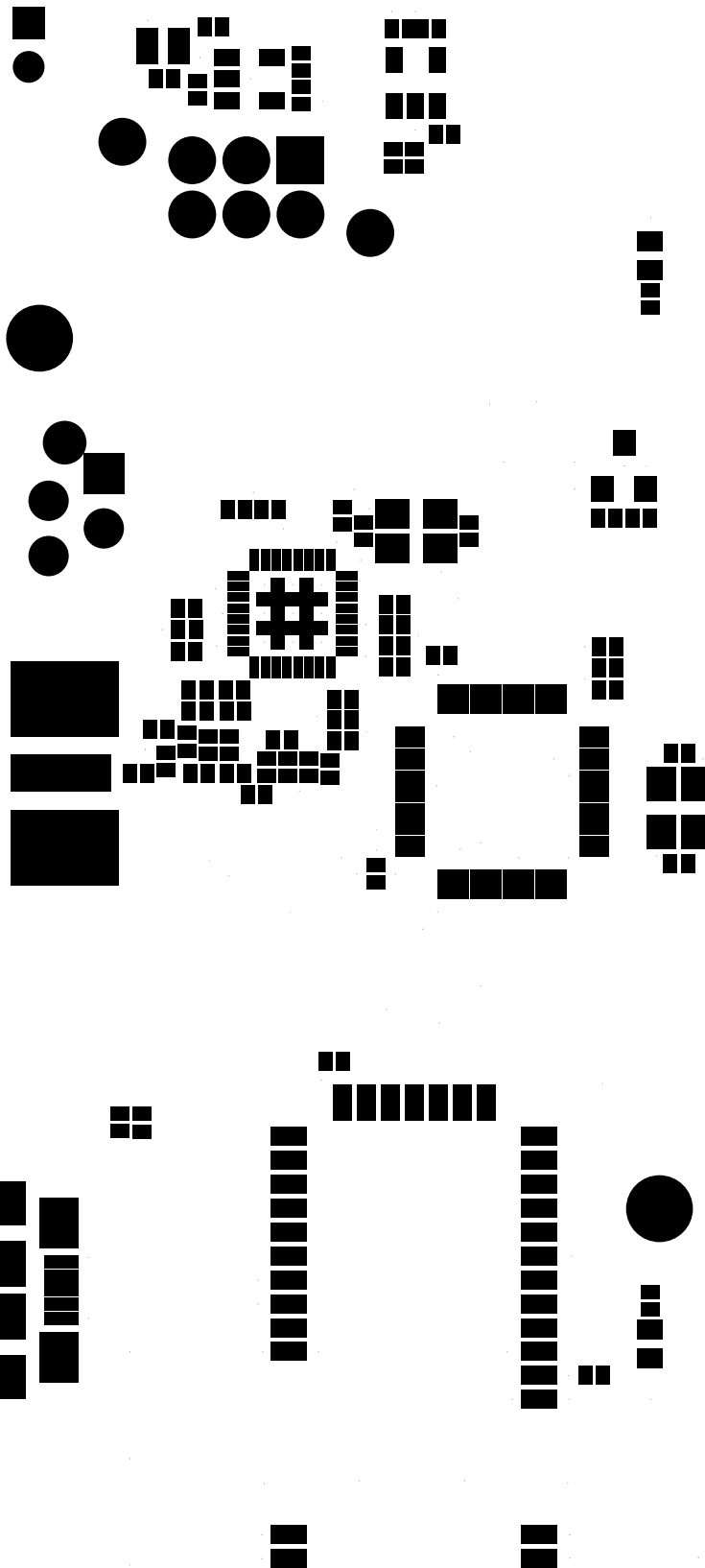
TeleBT, group2, not to scale
telebt.pcb

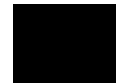
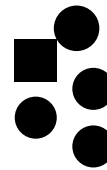
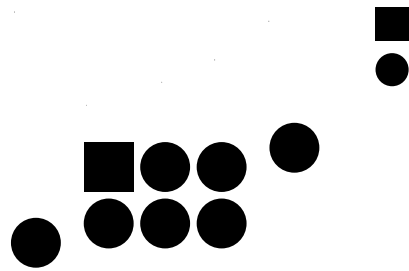


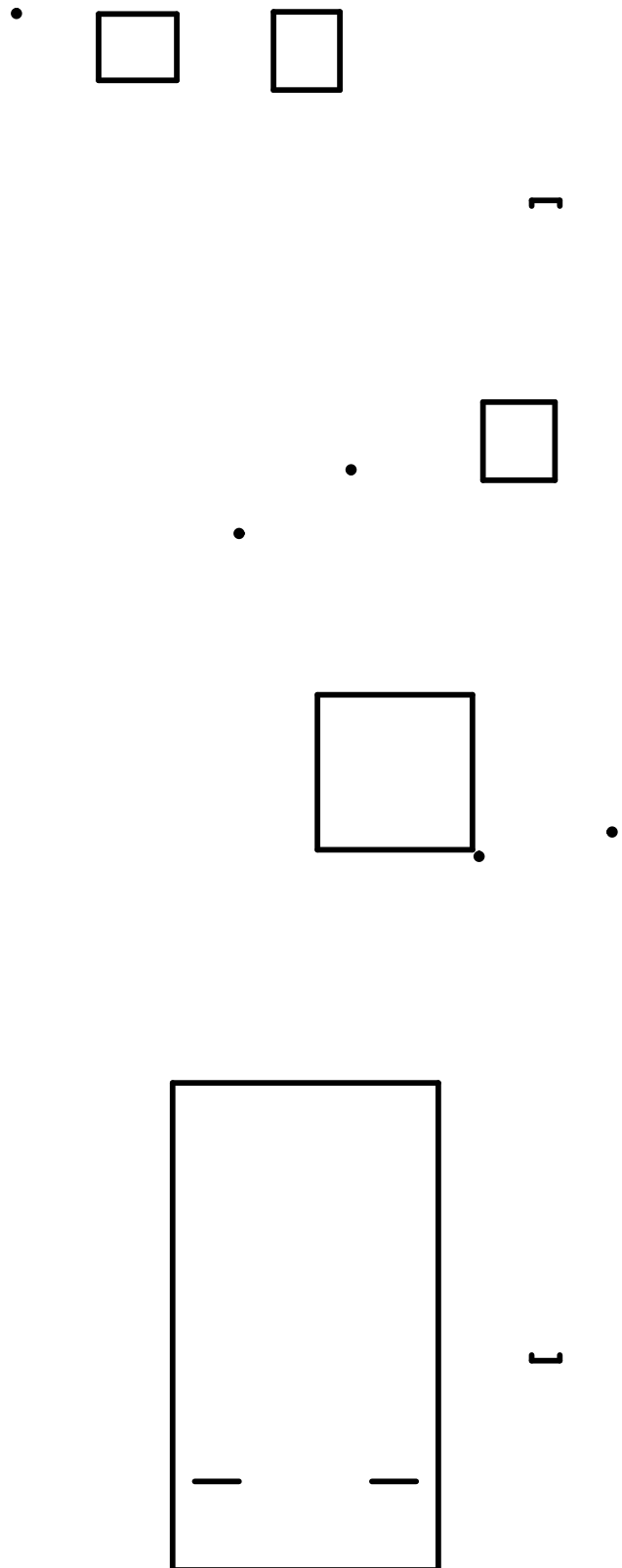
TeleBT, group3, not to scale
telebt.pcb

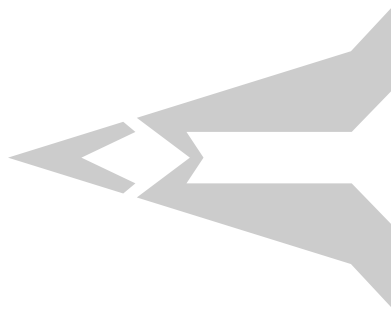










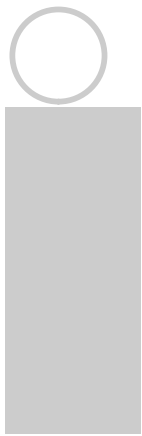


TeleBT v4.0

© 2017 Bdale Garbee

Licensed under the TAPR OHL

<http://altusmetrum.org/TeleBT>

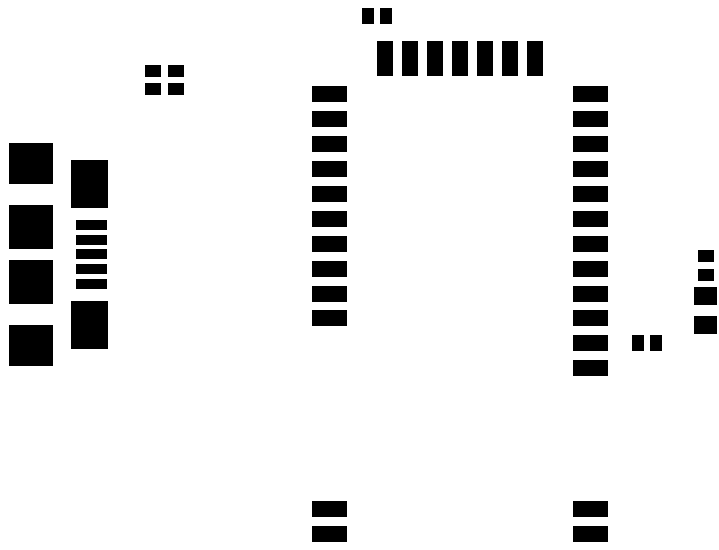
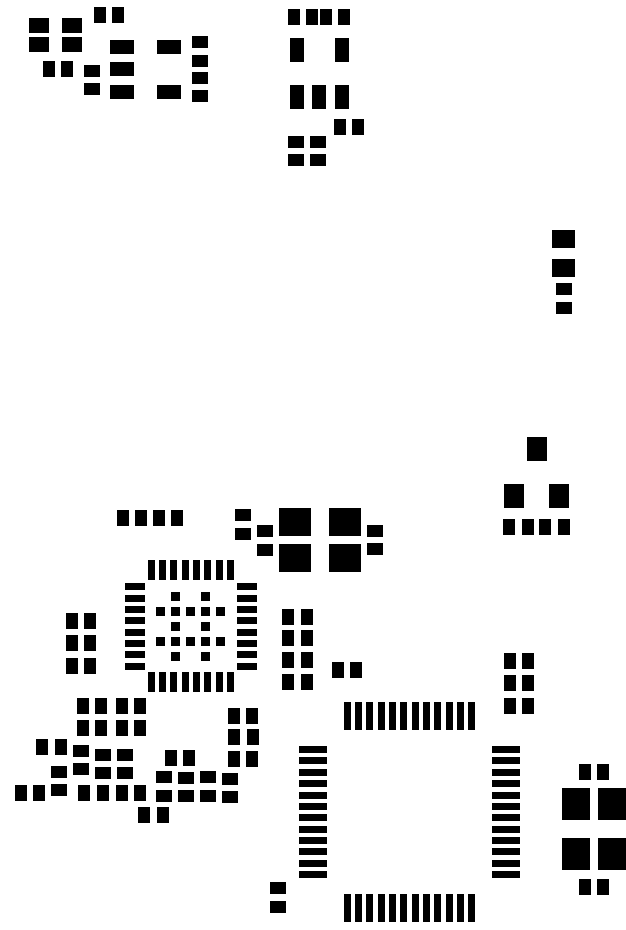


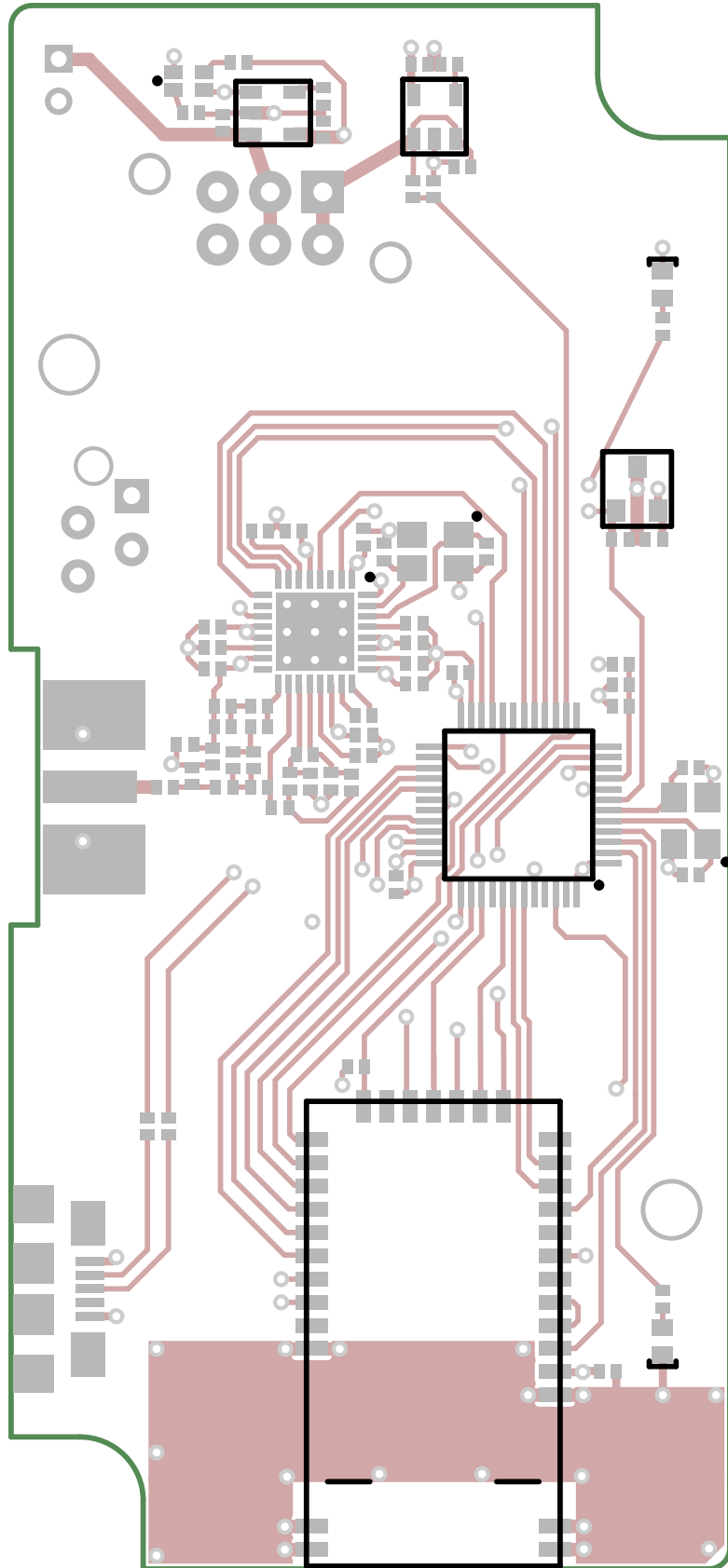
debug



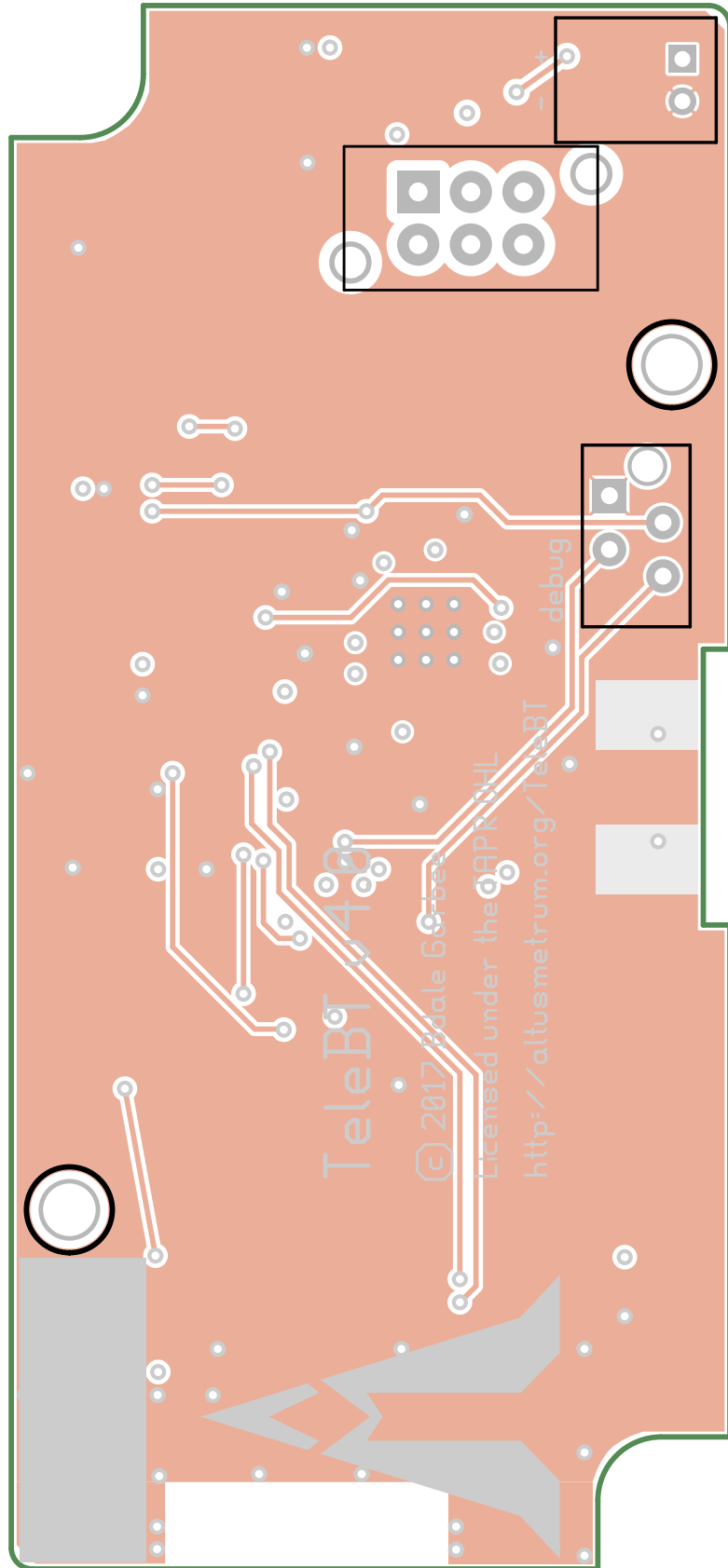
-- +







TeleBT, topassembly, not to scale
telebt.pcb

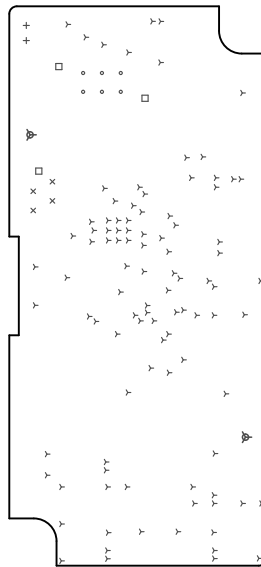


TeleBT, bottomassembly (mirrored), not to scale
telebt.pcb

There are 6 different drill sizes used in this layout, 116 holes total

Symbol	Diam. (Inch)	Count	Plated?
Y	0.015	99	YES
+	0.030	2	YES
x	0.032	4	YES
o	0.035	6	YES
□	0.059	3	YES
Ψ	0.098	2	YES

Title: TeleBT - Fabrication Drawing
 Author: Bdale Garbee
 Date: Fri Dec 14 01:11:28 2018 UTC



Board outline is the centerline of this path