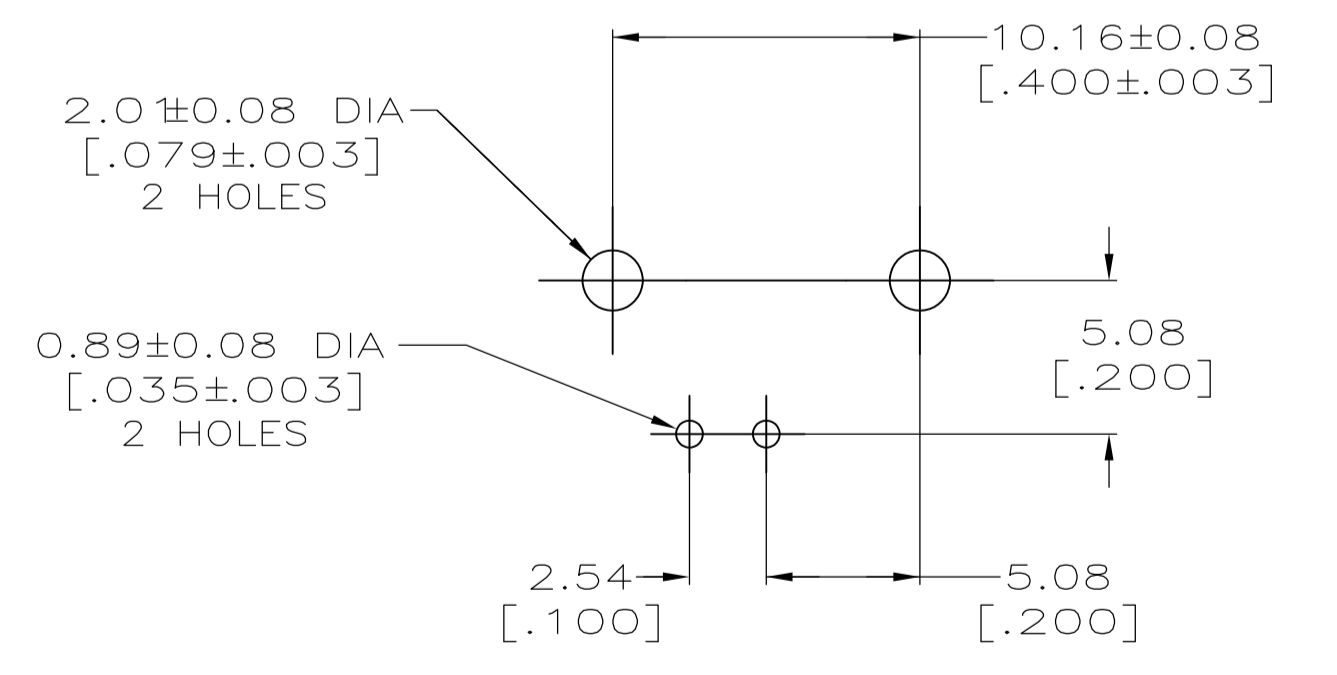
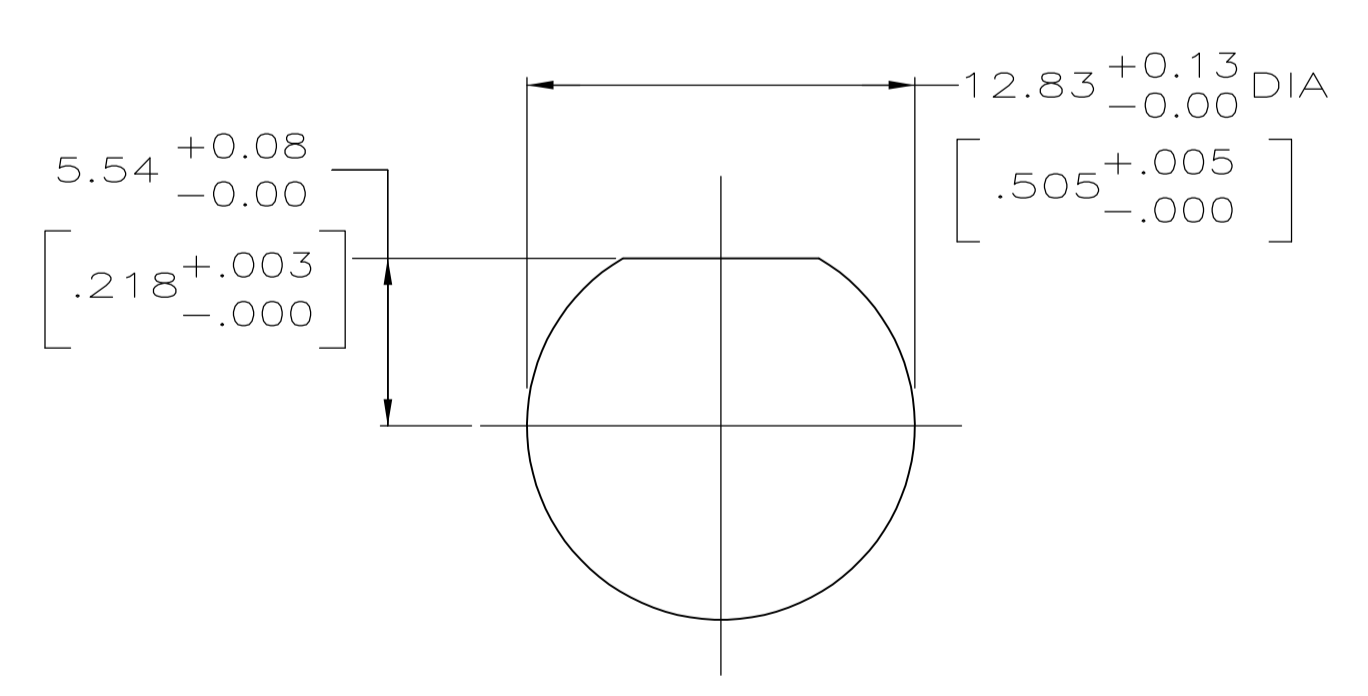
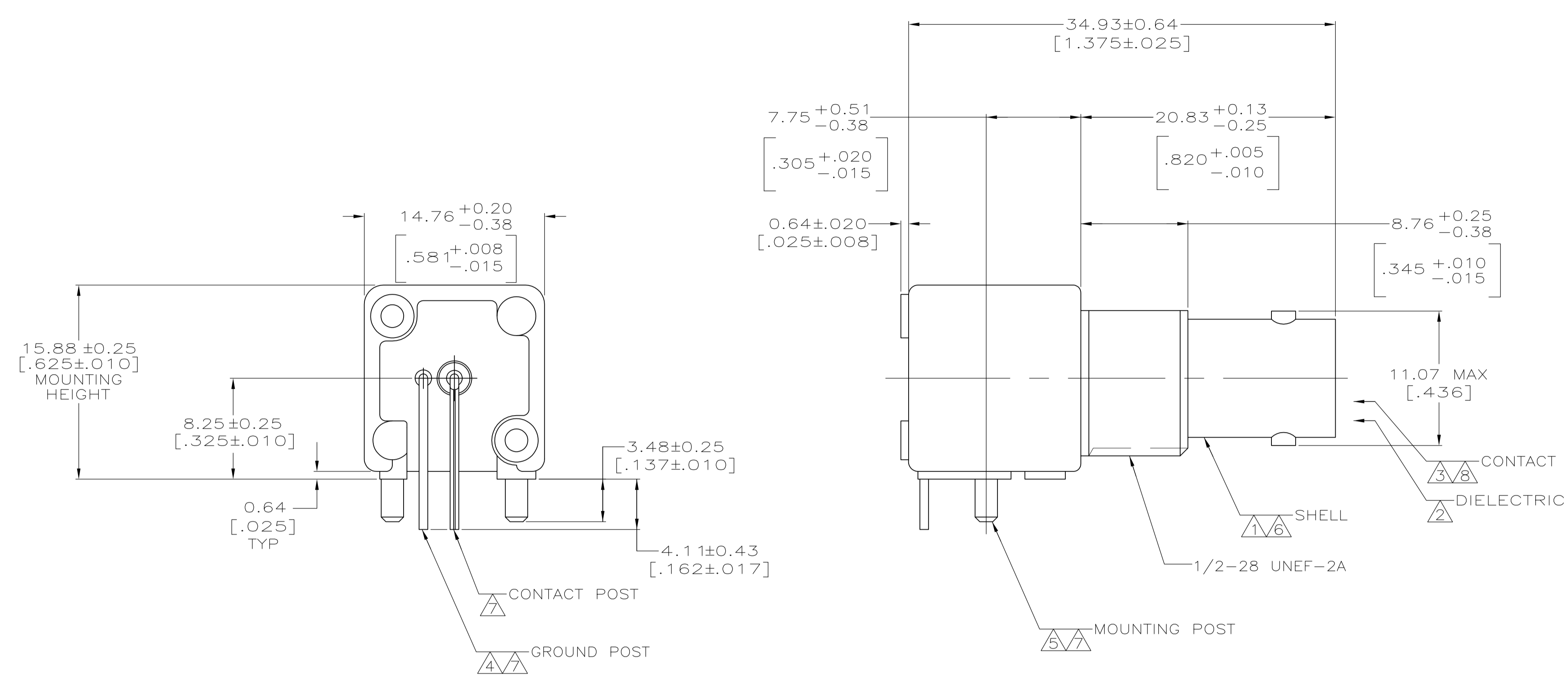


- 1 ZINC PER QQ-Z-363.
- 2 POLYMETHYLPENTENE PER ASTM D 1238.
- 3 PHOSPHOR BRONZE PER QQ-B-750.
- 4 BRASS PER ASTM B 453.
- 5 BRASS PER ASTM B 16.
- 6 NICKEL PLATE PER QQ-N-290, 3.81μm [.000150] MINIMUM THICK.
- 7 TIN PLATE PER ASTM B 545, 3.81μm [.000150] MINIMUM THICK.
- 8 GOLD PLATE PER ASTM B 488, 0.76μm [.000030] MINIMUM THICK.
- 9. SEE INSTRUCTION SHEET 408-2769.



RECOMMENDED PANEL CUTOUT

PCB CONFIGURATION

5227677-1
PART NUMBER

THIS DRAWING IS A CONTROLLED DOCUMENT.		DIN L VARELA - 20APR2005		STE TE Connectivity	
DIMENSIONS: mm (INCHES)		CHK J HAVENER		NAME	
TOLERANCES UNLESS OTHERWISE SPECIFIED:		APVD J LIPPERT 23JUN2005		PRODUCT SPEC	
0 PLC ± -		APPLICATION SPEC		108-12078	
1 PLC ± -		SIZE		CAGE CODE	
2 PLC ± 0.05 [.002]		A1		00779	
3 PLC ± -		WEIGHT		DRAWING NO	
4 PLC ± -		CUSTOMER DRAWING		5227677	
ANGLES ± -		SCALE		SHEET	
FINISH SEE NOTES		4:1		1 OF 1	
REV A1		REV		A1	