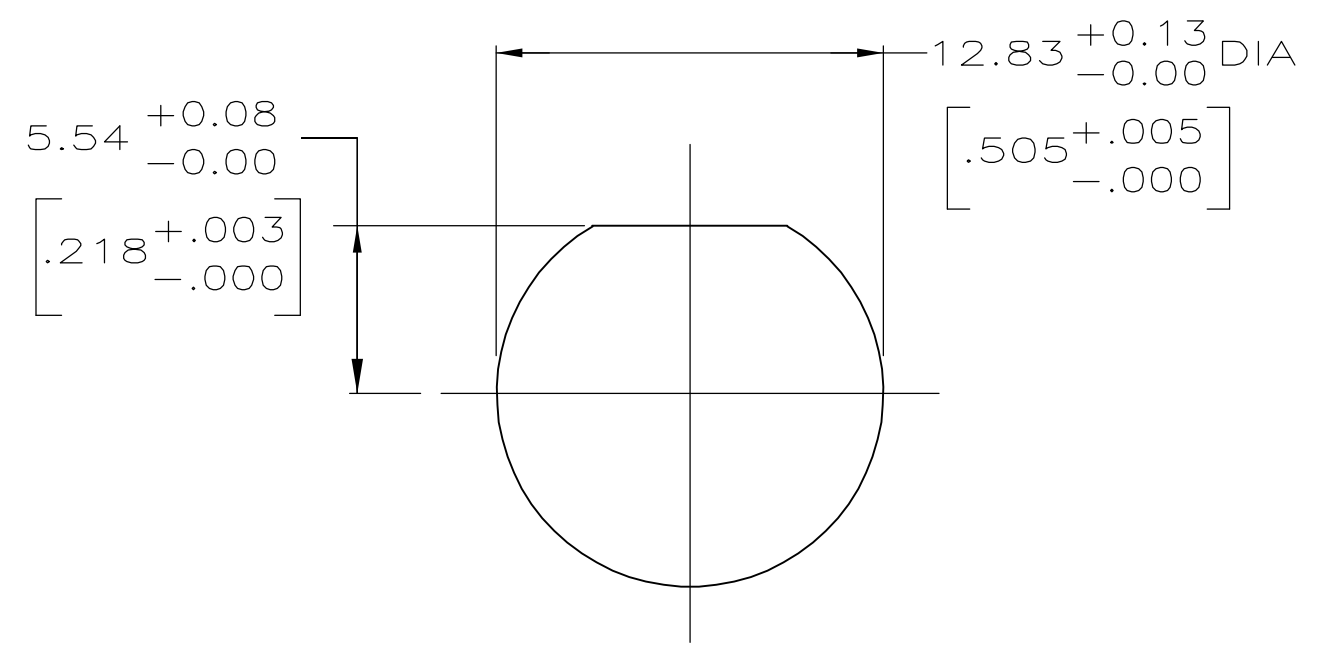
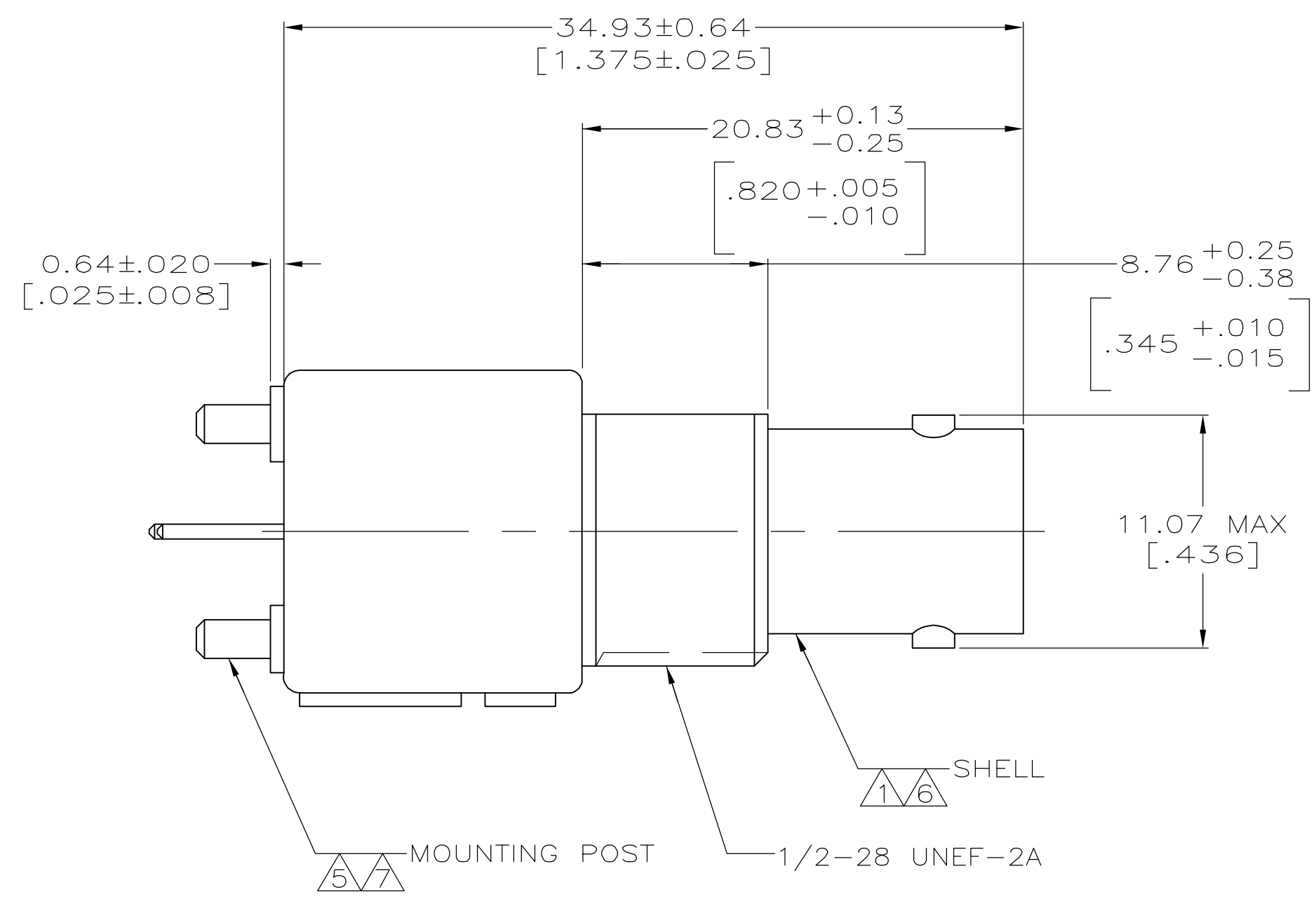
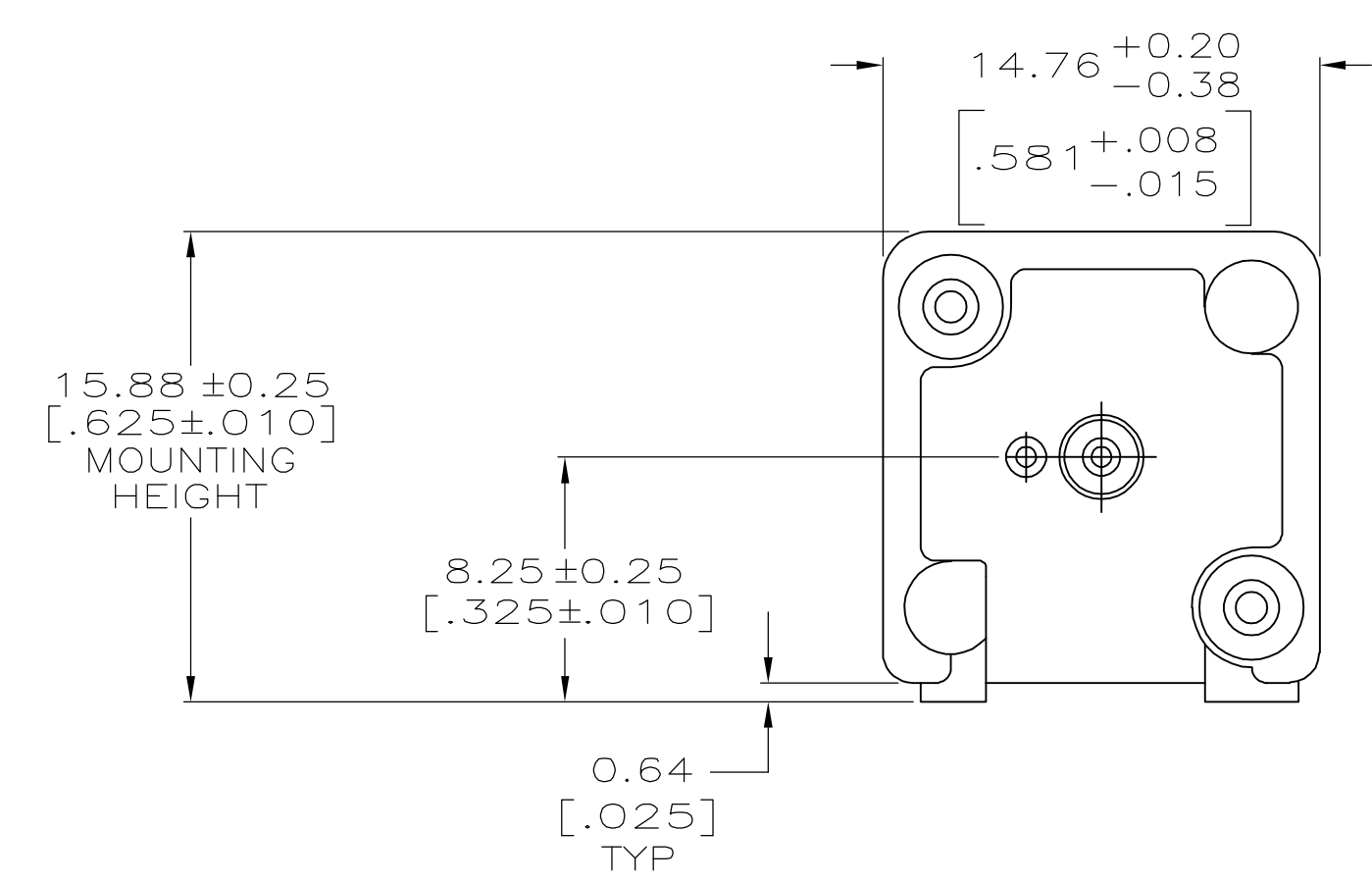
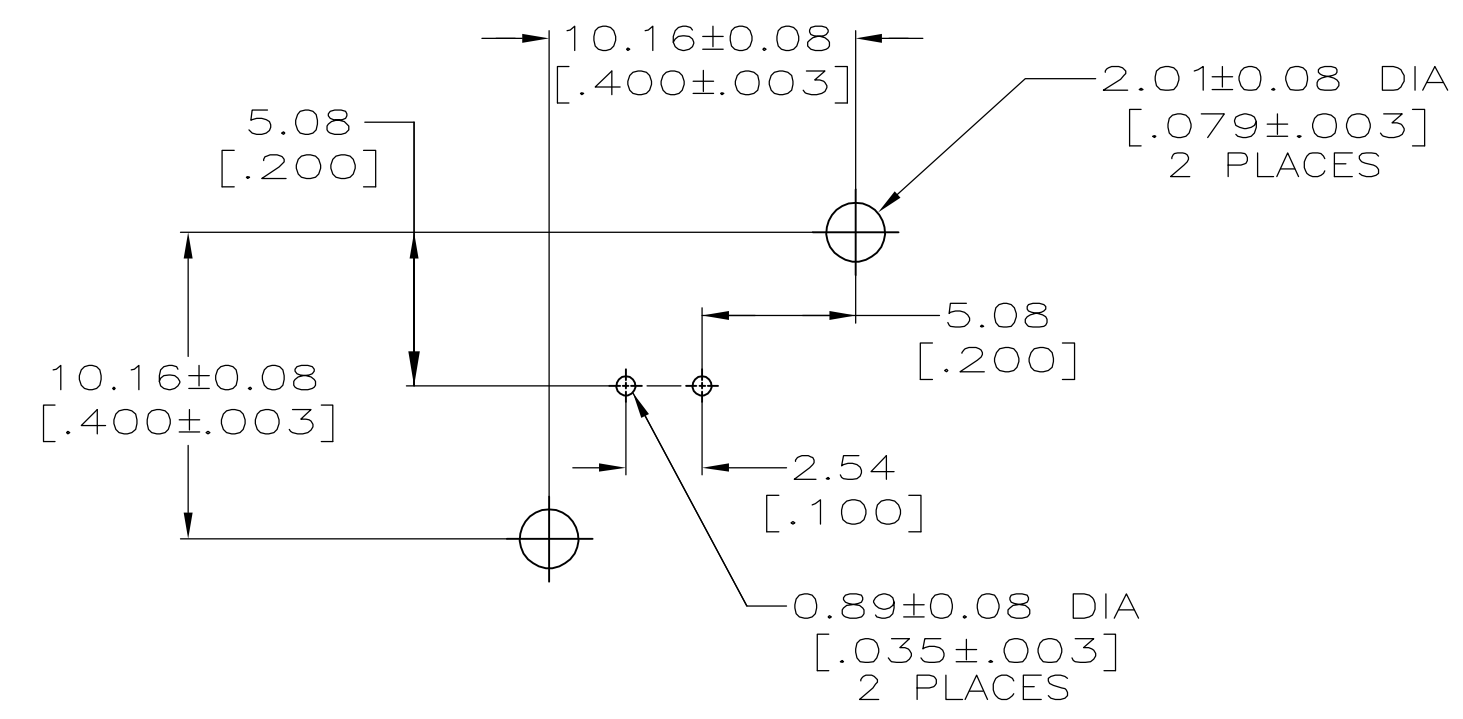


- 1 ZINC PER QQ-Z-363.
- 2 POLYMETHYLPENTENE PER ASTM-D-1238.
- 3 PHOSPHOR BRONZE PER QQ-B-750.
- 4 BRASS PER ASTM-B-453.
- 5 BRASS PER ASTM-B-16.
- 6 NICKEL PLATE PER QQ-N-290, 3.81µm [.000150] MINIMUM THICK.
- 7 TIN PLATE PER ASTM-B-545, 3.81µm [.000150] MINIMUM THICK.
- 8 GOLD PLATE PER ASTM-B-488, 0.76µm [.000030] MINIMUM THICK.
- 9. SEE INSTRUCTION SHEET 408-2769.



RECOMMENDED PANEL CUTOUT



PCB CONFIGURATION

5227673-1  
PART NUMBER

THIS DRAWING IS A CONTROLLED DOCUMENT.		DWN L. VARELA - 20APR2005		Tyco Electronics Corporation Harrisburg, Pa 17105-3608	
DIMENSIONS: mm [INCHES]		CHK J. HAVENER - 20APR2005		APRO J. LIPPERT - 20APR2005	NAME
TOLERANCES UNLESS OTHERWISE SPECIFIED:		PRODUCT SPEC		SIZE	108-12078
0 PLC ± -		APPLICATION SPEC		CAGE CODE	—
1 PLC ± -		MATERIAL		DRAWING NO	—
2 PLC ± 0.05 [.002]		FINISH		RESTRICTED TO	—
3 PLC ± -		SEE NOTES 1-5		WEIGHT	—
4 PLC ± -		SEE NOTES 6-8		SCALE	4:1
ANGLES ± -		CUSTOMER DRAWING		SHEET	1 OF 1
REV A		A1 00779 ©=5227673		REV	A