

1. Table of Contents (This Page)  
Created on Wed May 22 09:22:33 2013

2. top

3. bottom

4. outline

5. plated-drill

6. componentmask

7. soldermask

8. topsilk

9. bottomsilk

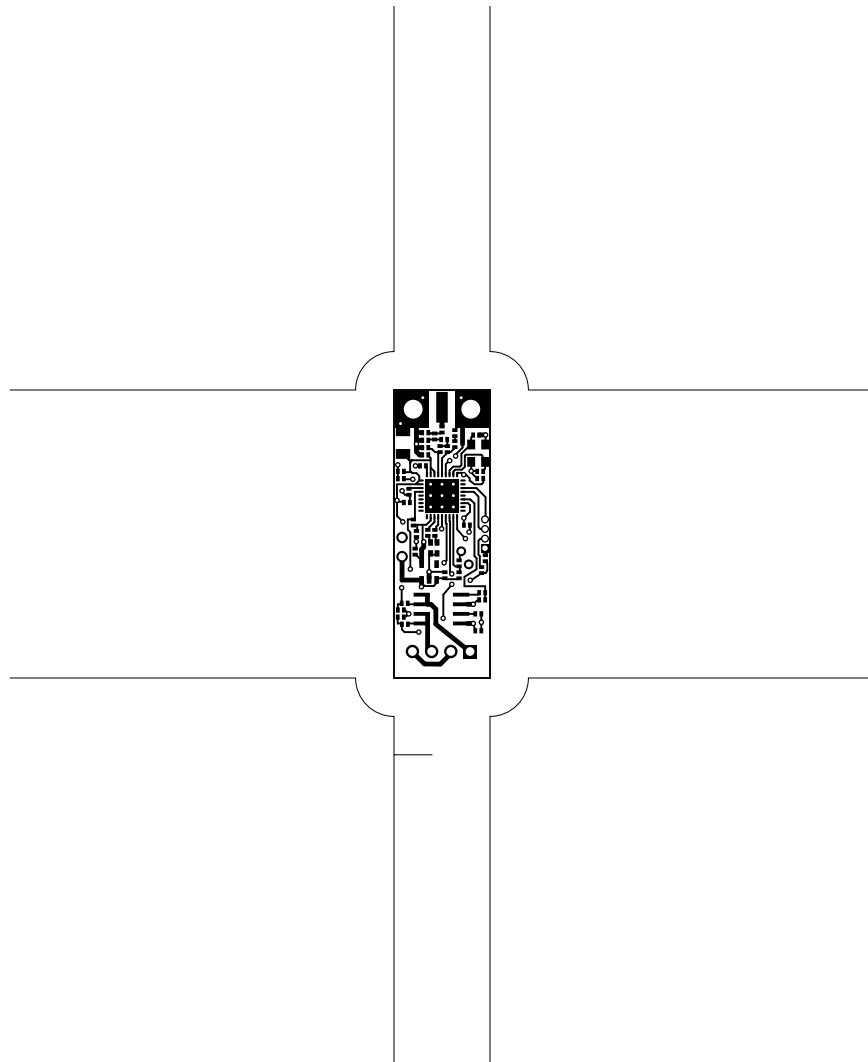
10. toppaste

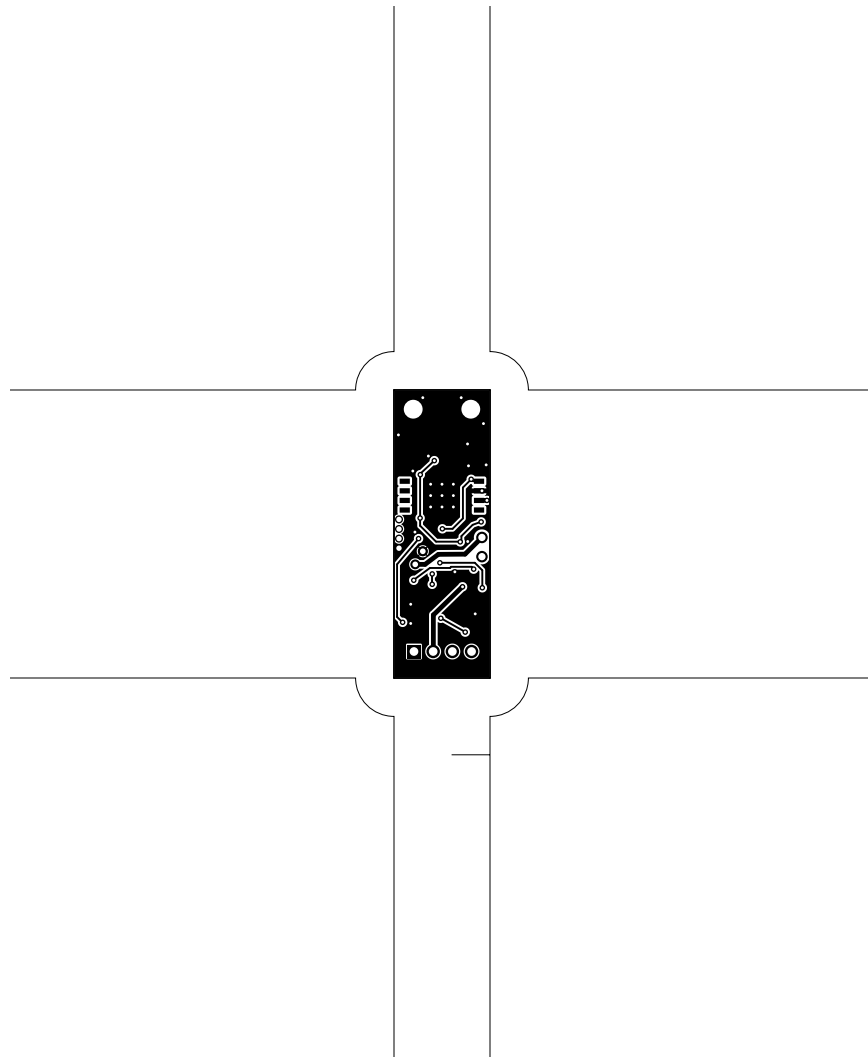
11. bottompaste

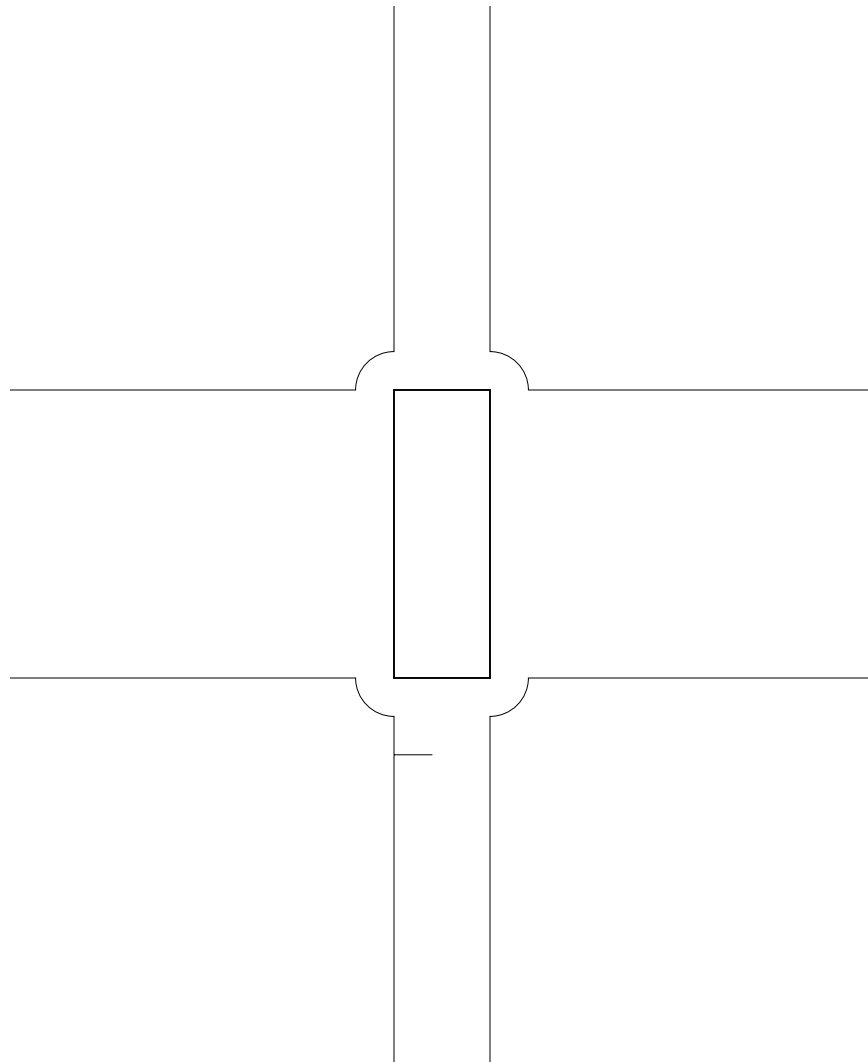
12. topassembly

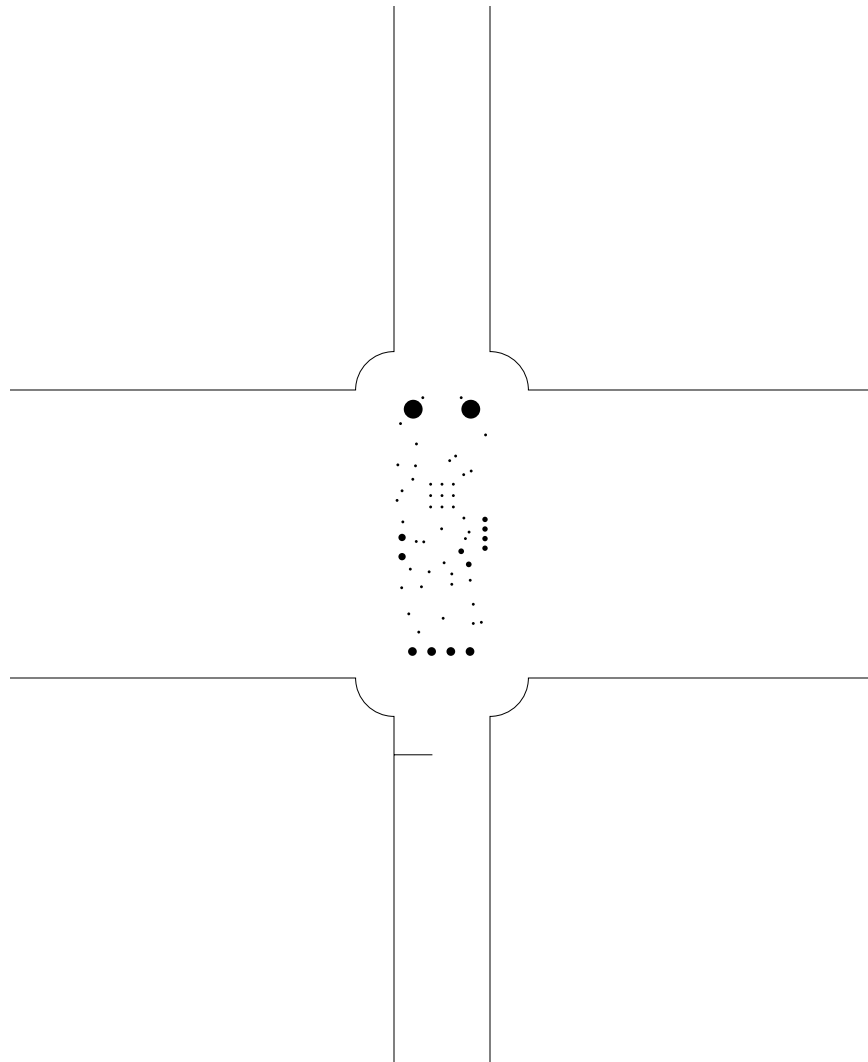
13. bottomassembly

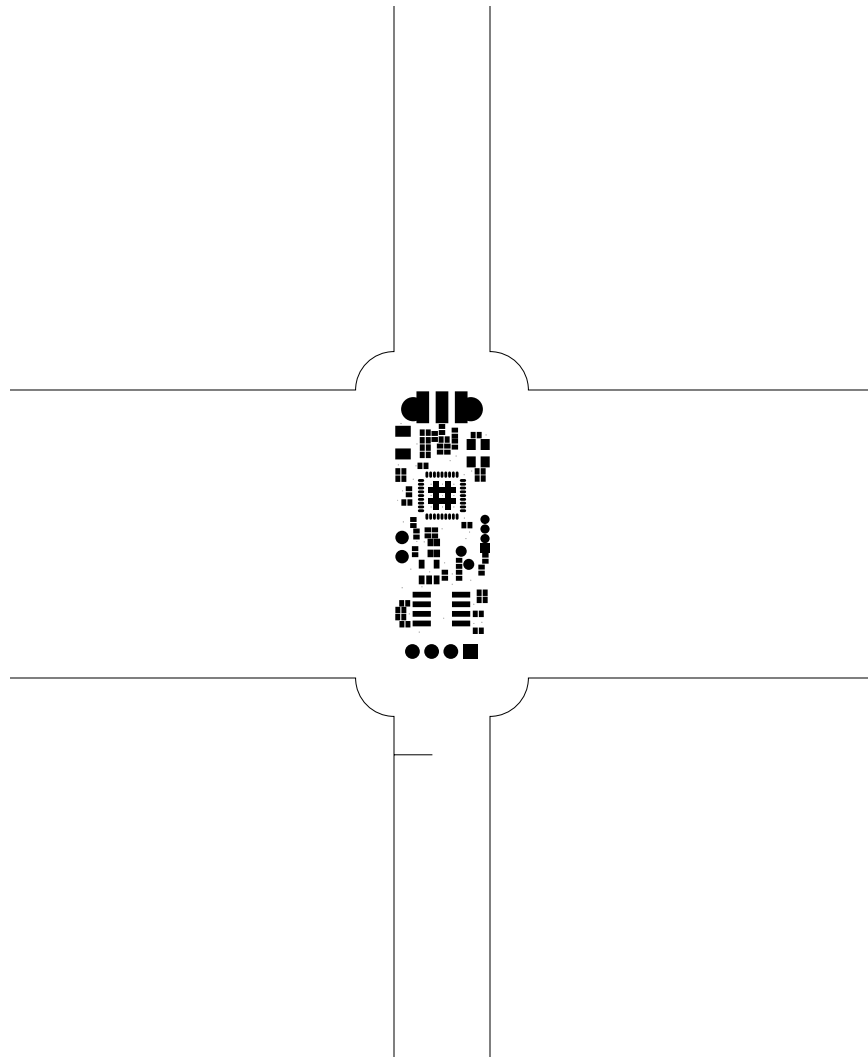
14. fab

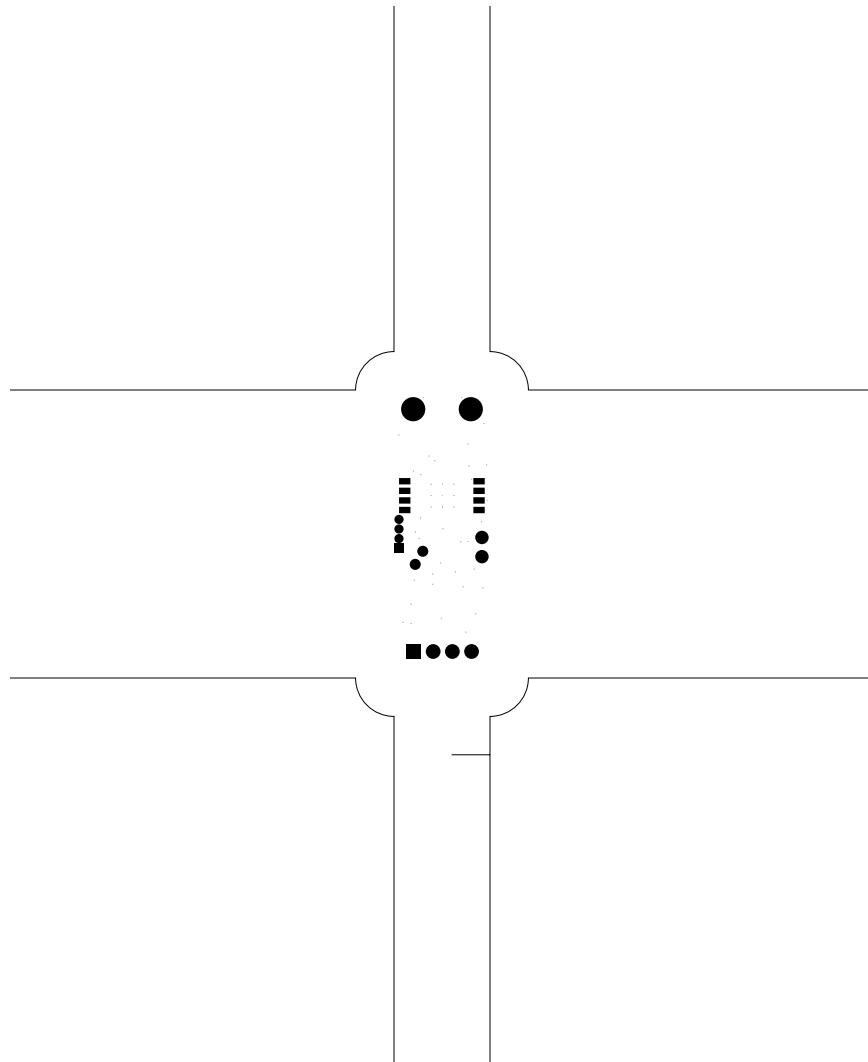


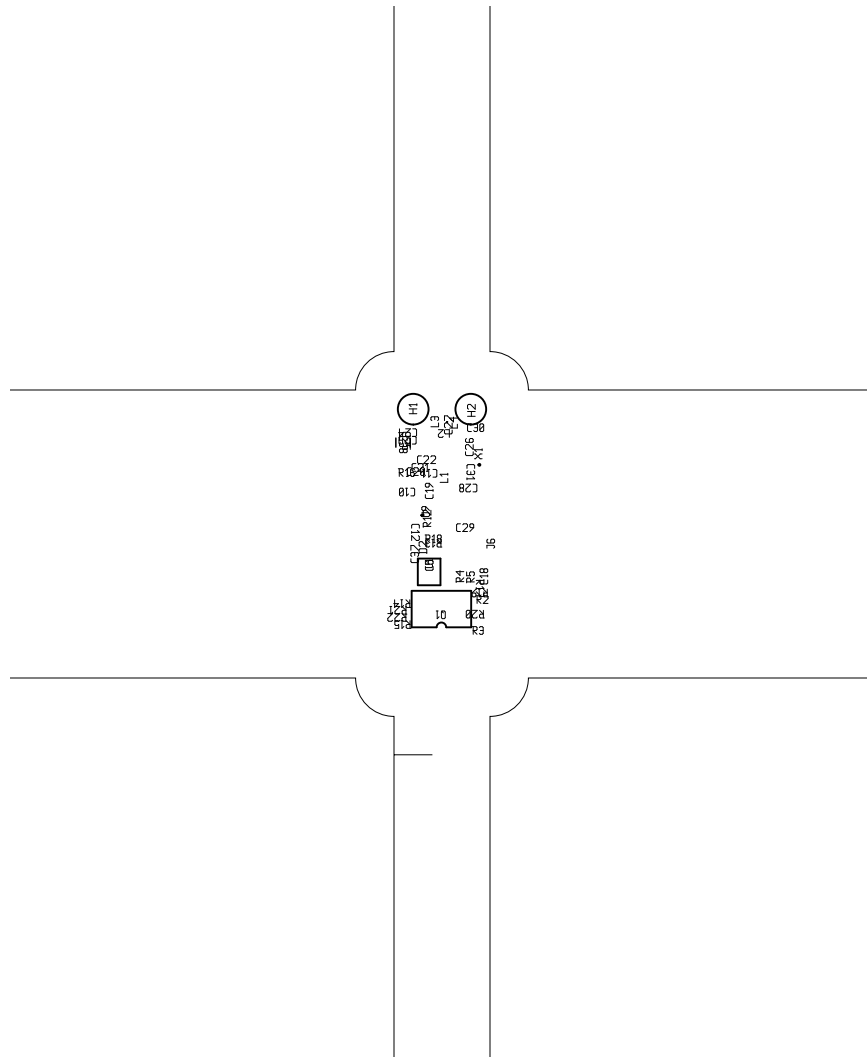




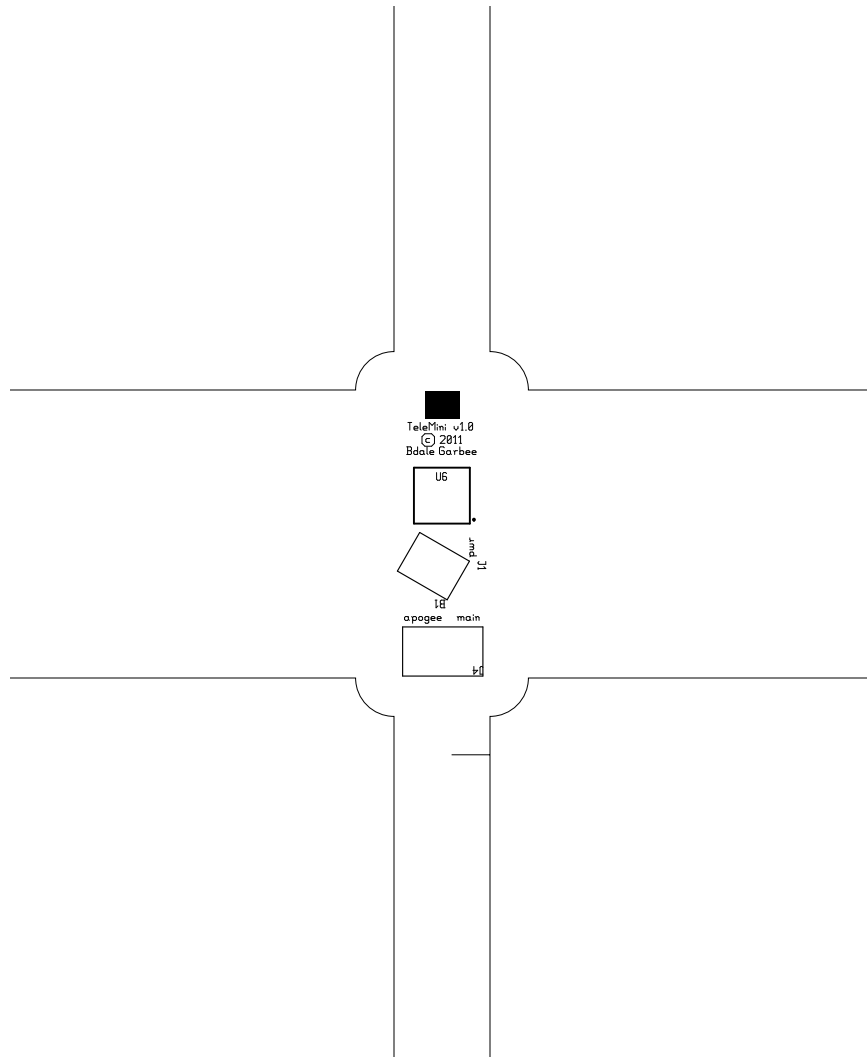


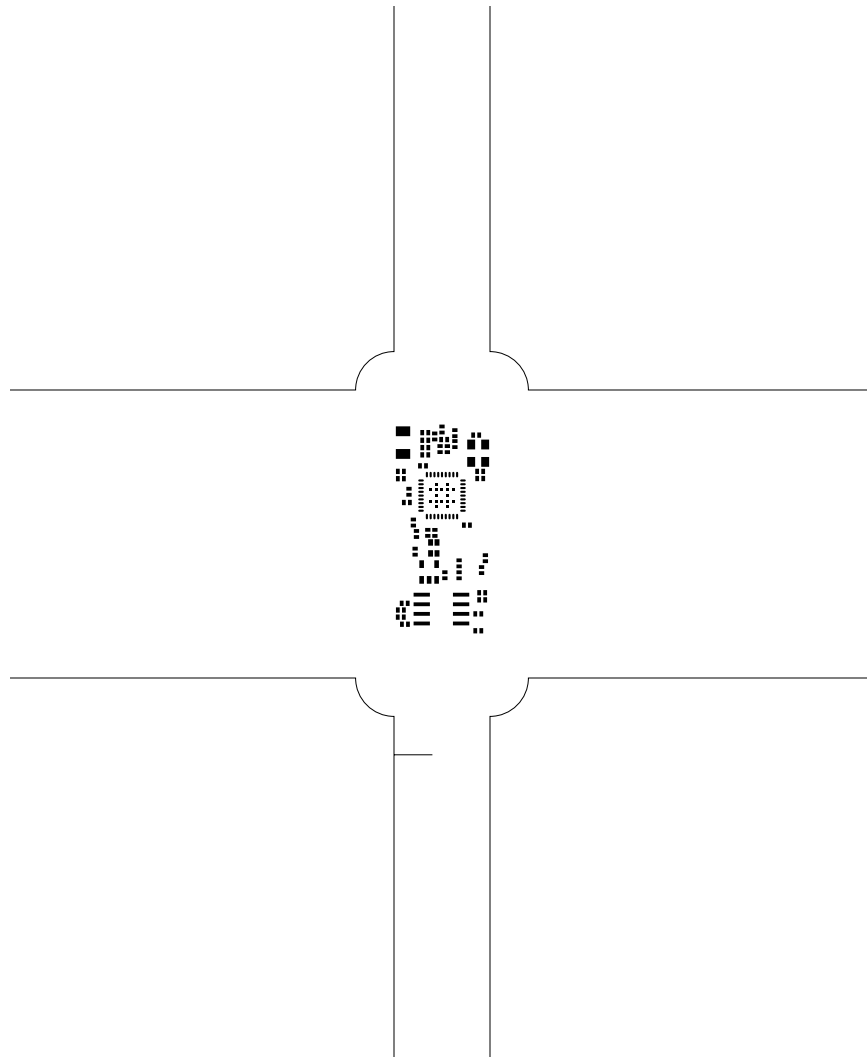


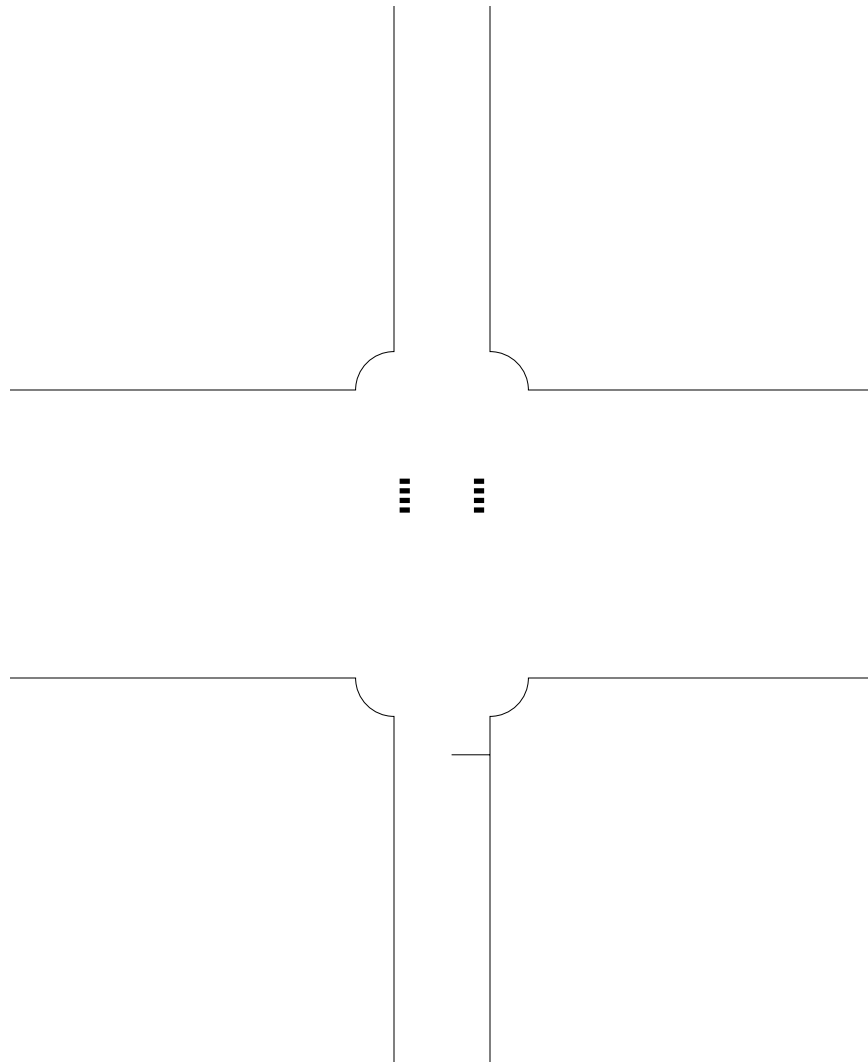


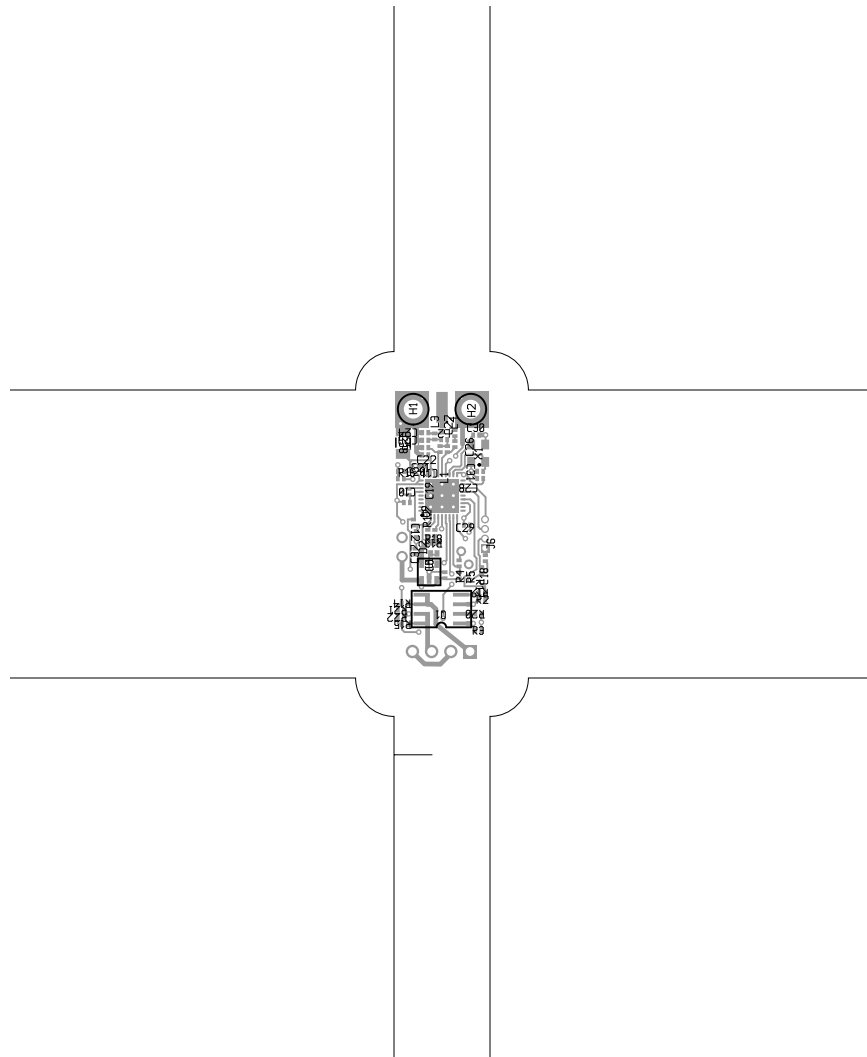


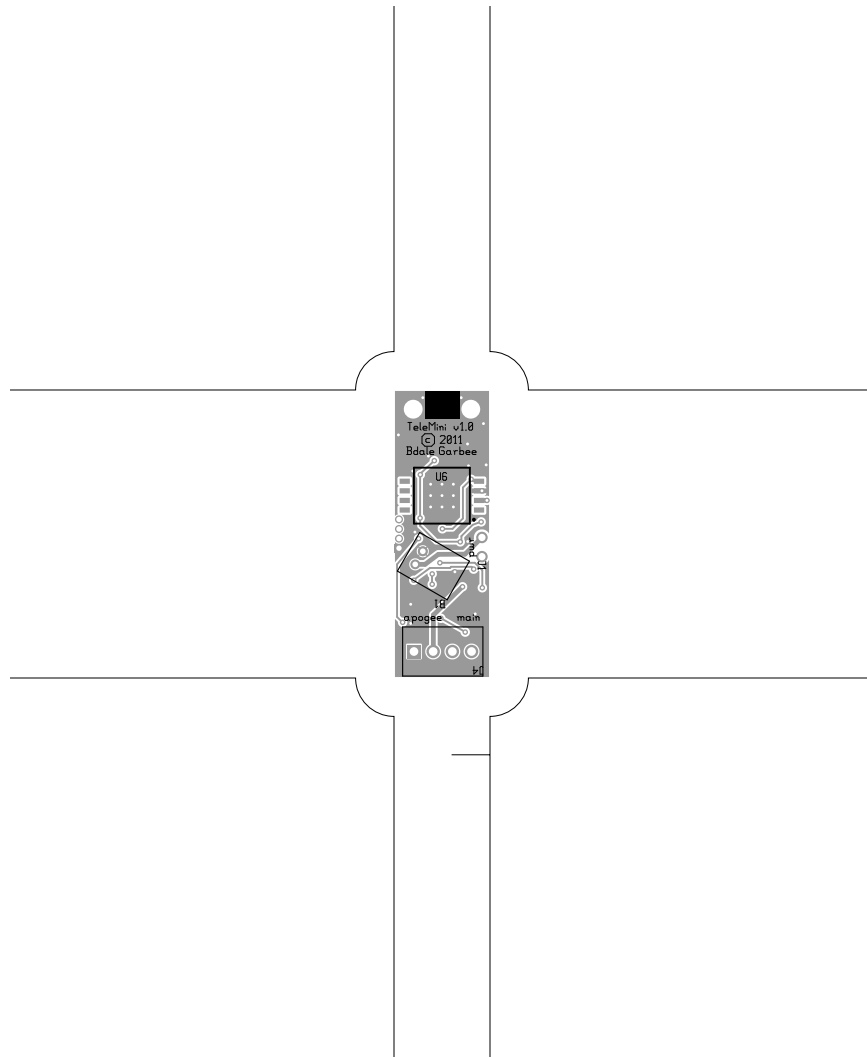










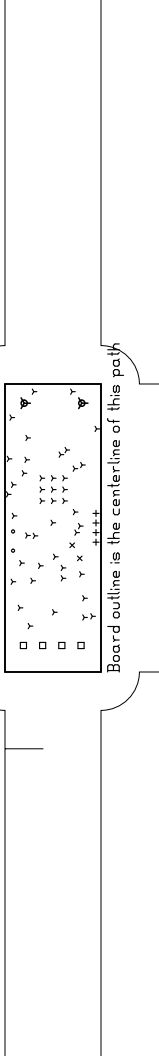


TeleMini, bottomassembly (mirrored), scale = 1:1.000  
telemini.pcb

There are 6 different drill sizes used in this layout, 58 holes total.

Symbol	Diam. (Inch)	Count	Plated?
y	0.015	44	YES
+	0.028	4	YES
x	0.030	2	YES
o	0.038	2	YES
□	0.045	4	YES
▽	0.098	2	YES

Title: TeleMini - Fabrication Drawing  
 Author: Bdale Garbee  
 Date: Wed 22 May 2013 09:22:33 PM GMT UTC



Board outline is the centerline of this path