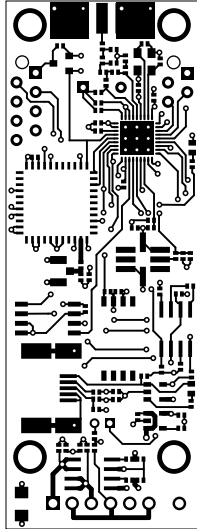
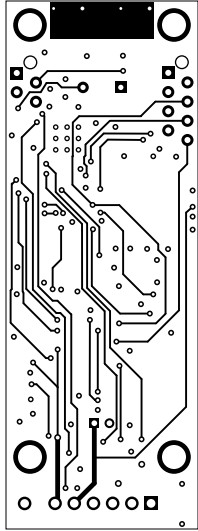
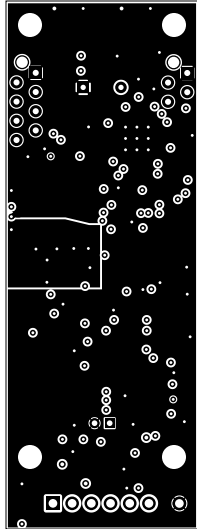


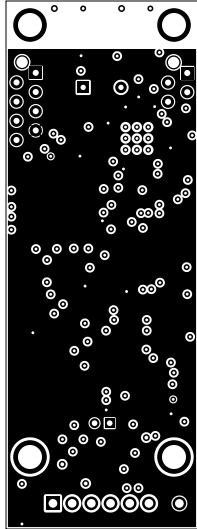
1. Table of Contents (This Page)
Created on Mon Dec 26 23:26:00 2011

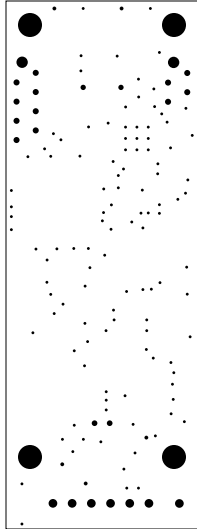
2. top
3. bottom
4. GND plane
5. power plane
6. plated-drill
7. componentmask
8. soldermask
9. topsilk
10. bottomsilk
11. toppaste
12. topassembly
13. bottomassembly
14. fab

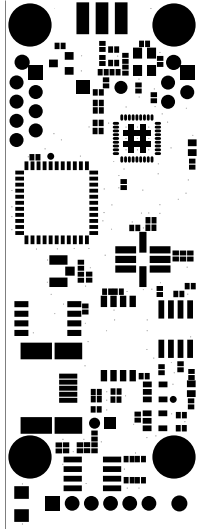


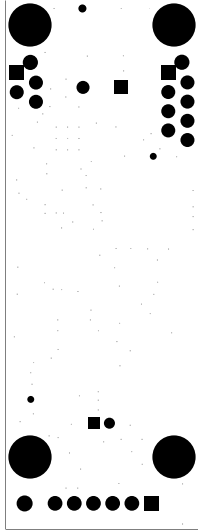


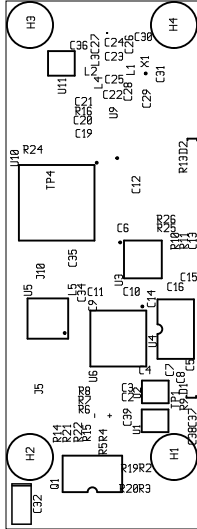


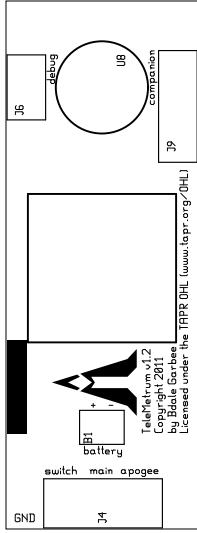


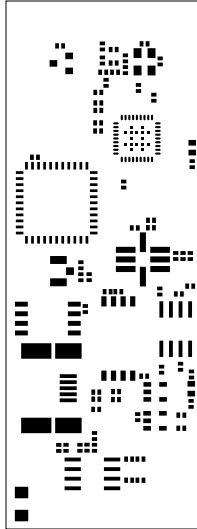


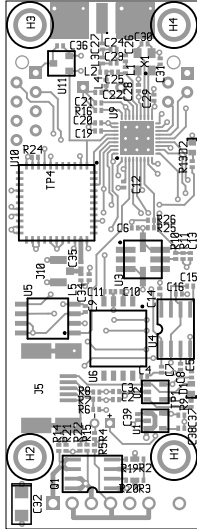










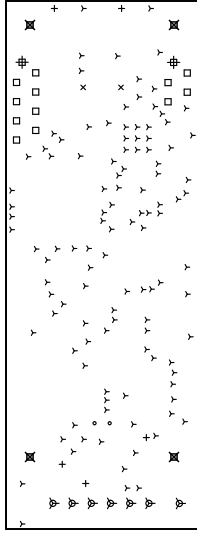


TeleMetrum, topassembly, scale = 1:1.000
telemetrum.pcb

There are 8 different drill sizes used in this layout, 146 holes total

Symbol	Diam. (Inch)	Count	Plated?
Y	0.015	112	YES
+	0.020	5	YES
x	0.028	2	YES
o	0.030	2	YES
□	0.032	12	YES
ψ	0.045	7	YES
#	0.059	2	YES
⊗	0.125	4	YES

Title: TeleMetrum - Fabrication Drawing
 Author: Bdale Garbee
 Date: Tue 27 Dec 2011 06:26:00 AM GMT UTC
 Maximum Dimensions: 2750.000000 mils wide, 1000.000000 mils high



Board outline is the centerline of this 8.000000 mil rectangle - 0,0 to 2750.000000,1000.000000 mils