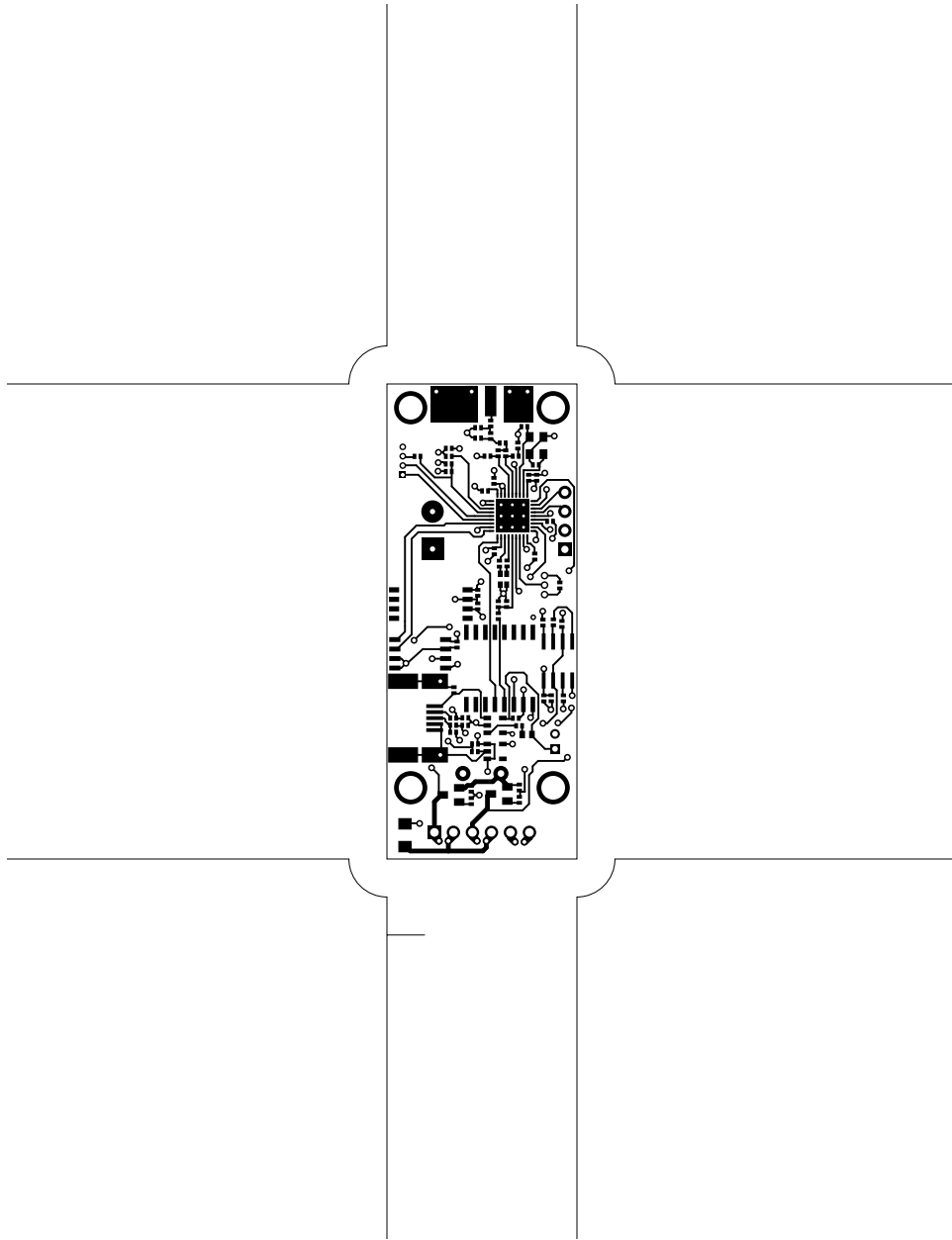
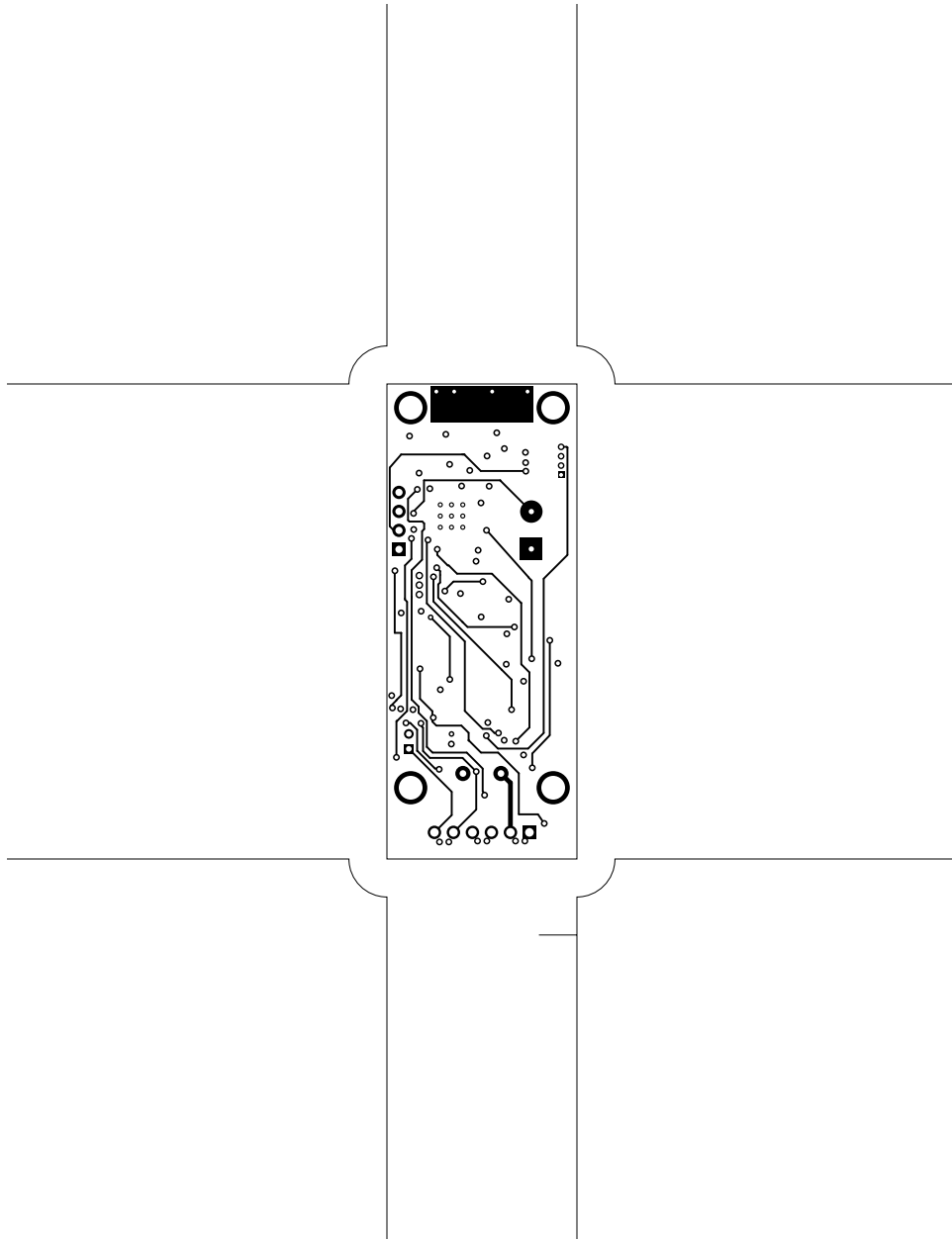
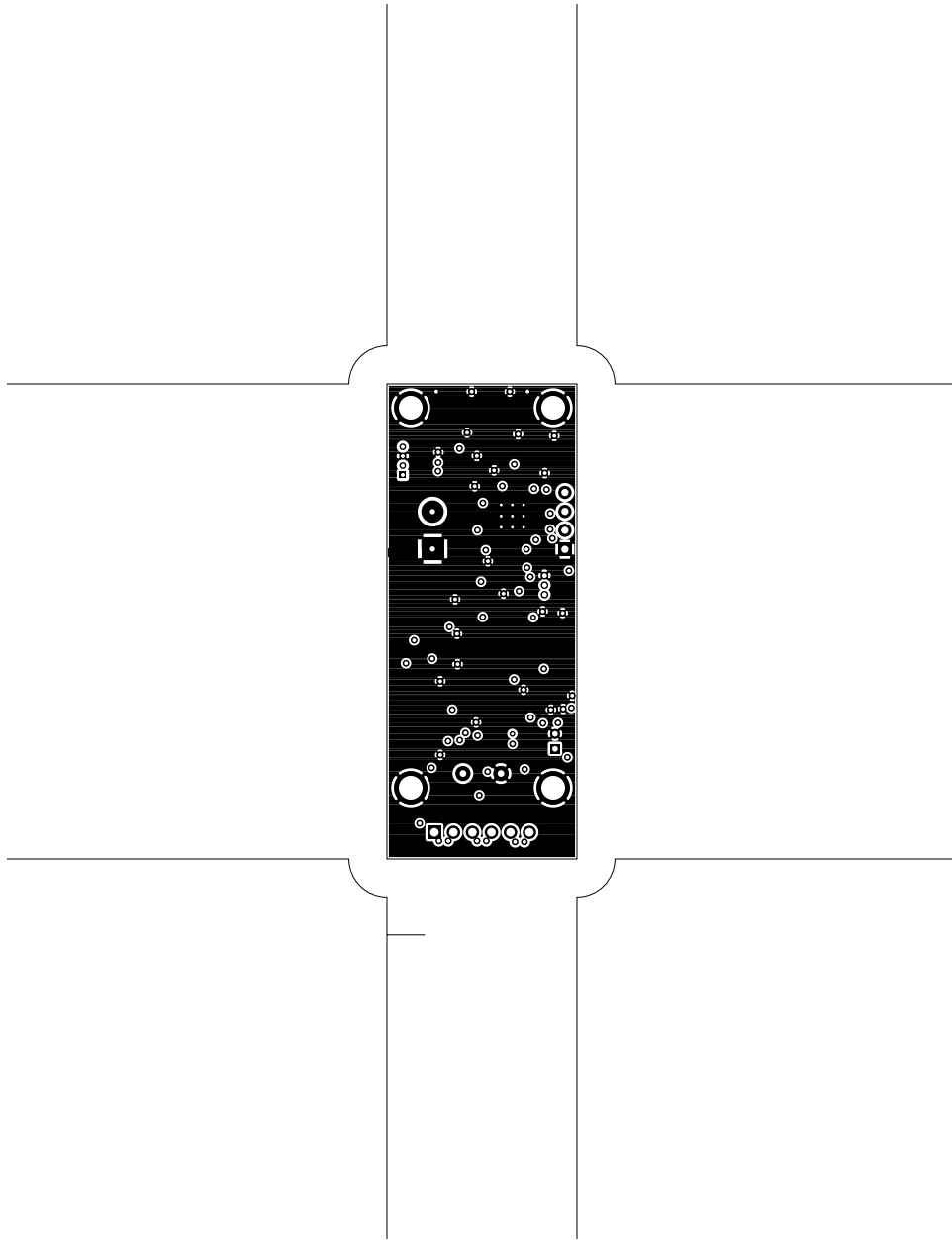
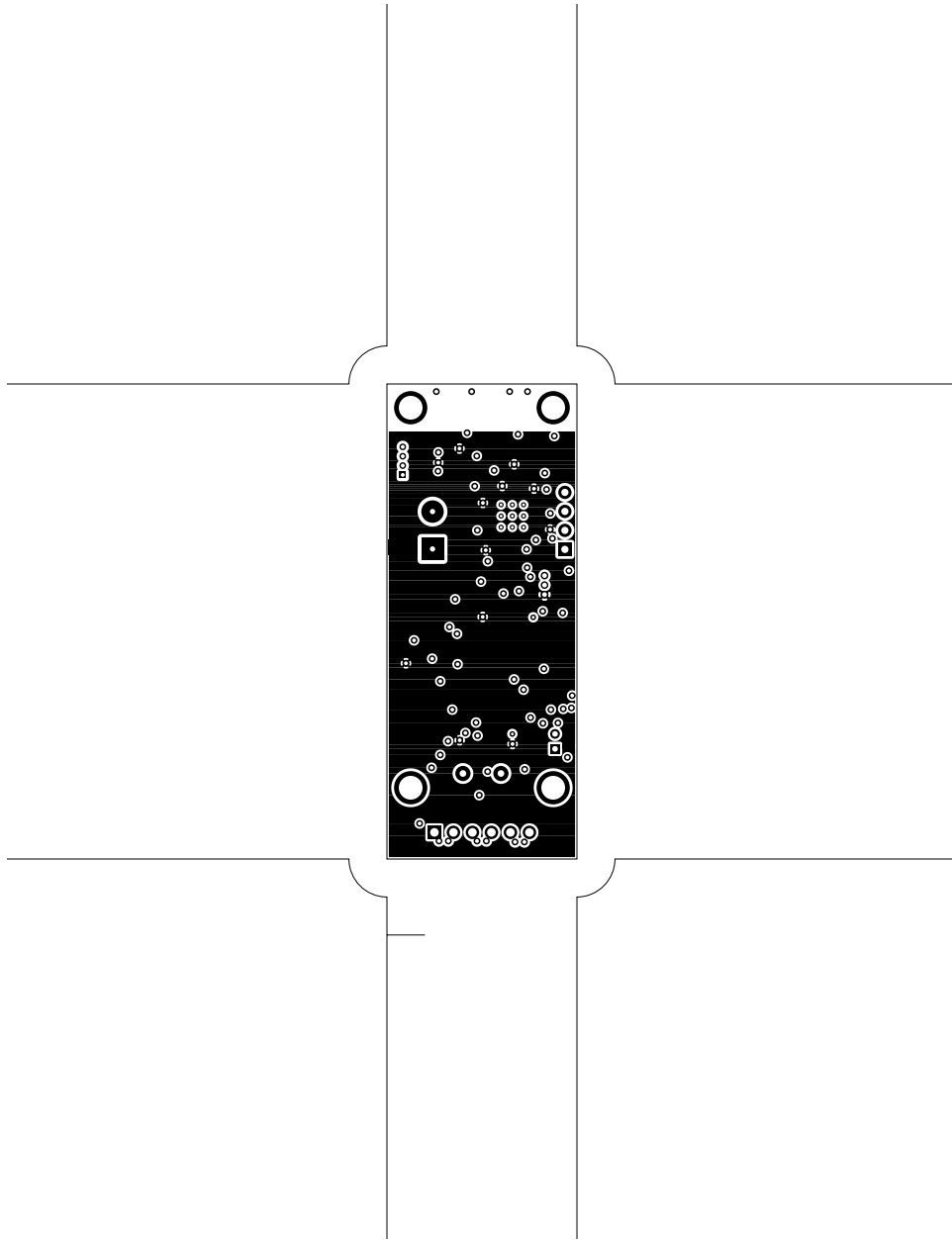


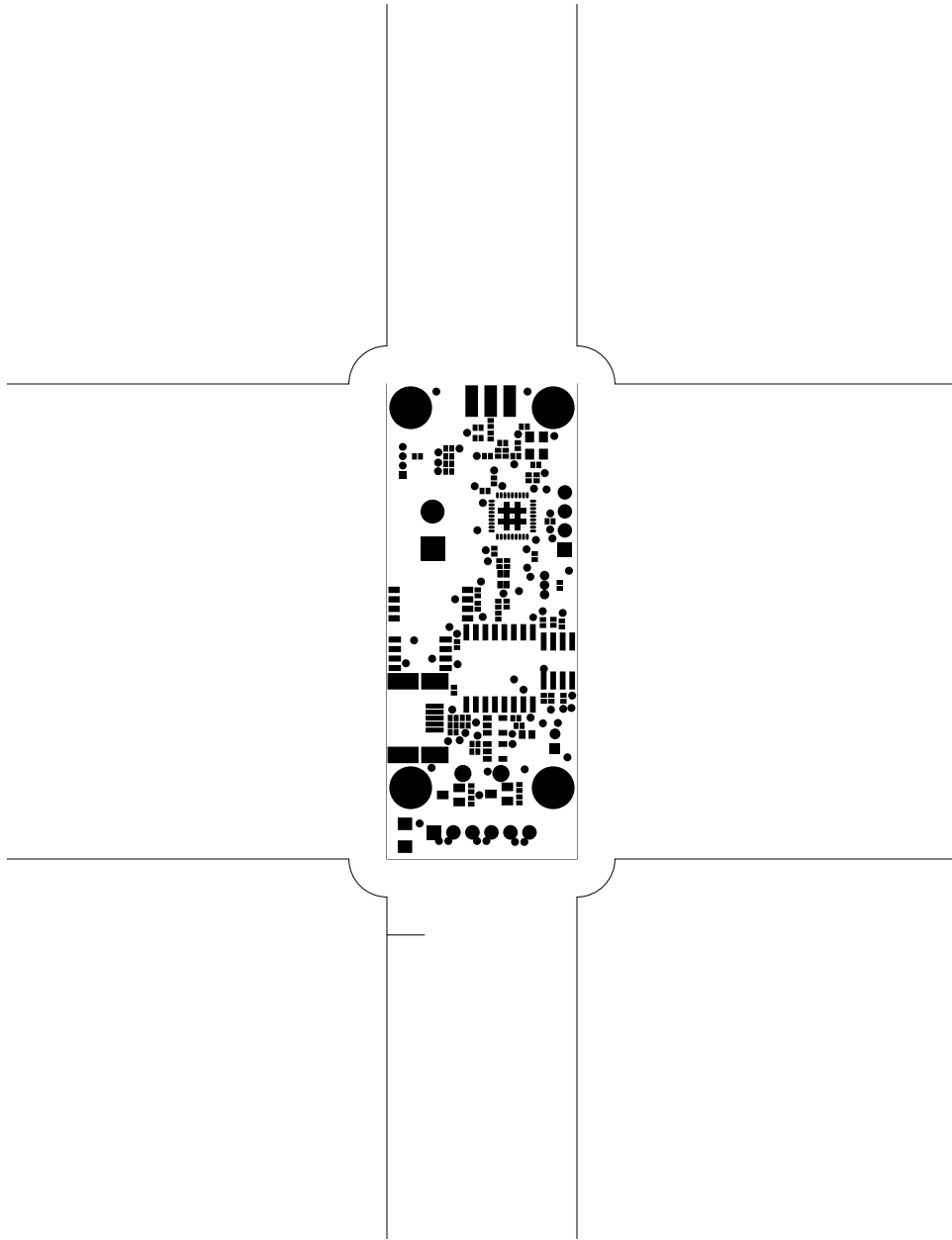
2. top
3. bottom
4. GND plane
5. power plane
6. componentmask
7. soldermask
8. plated-drill
9. topsilk
10. bottomsilk
11. toppaste
12. topassembly
13. bottomassembly
14. fab

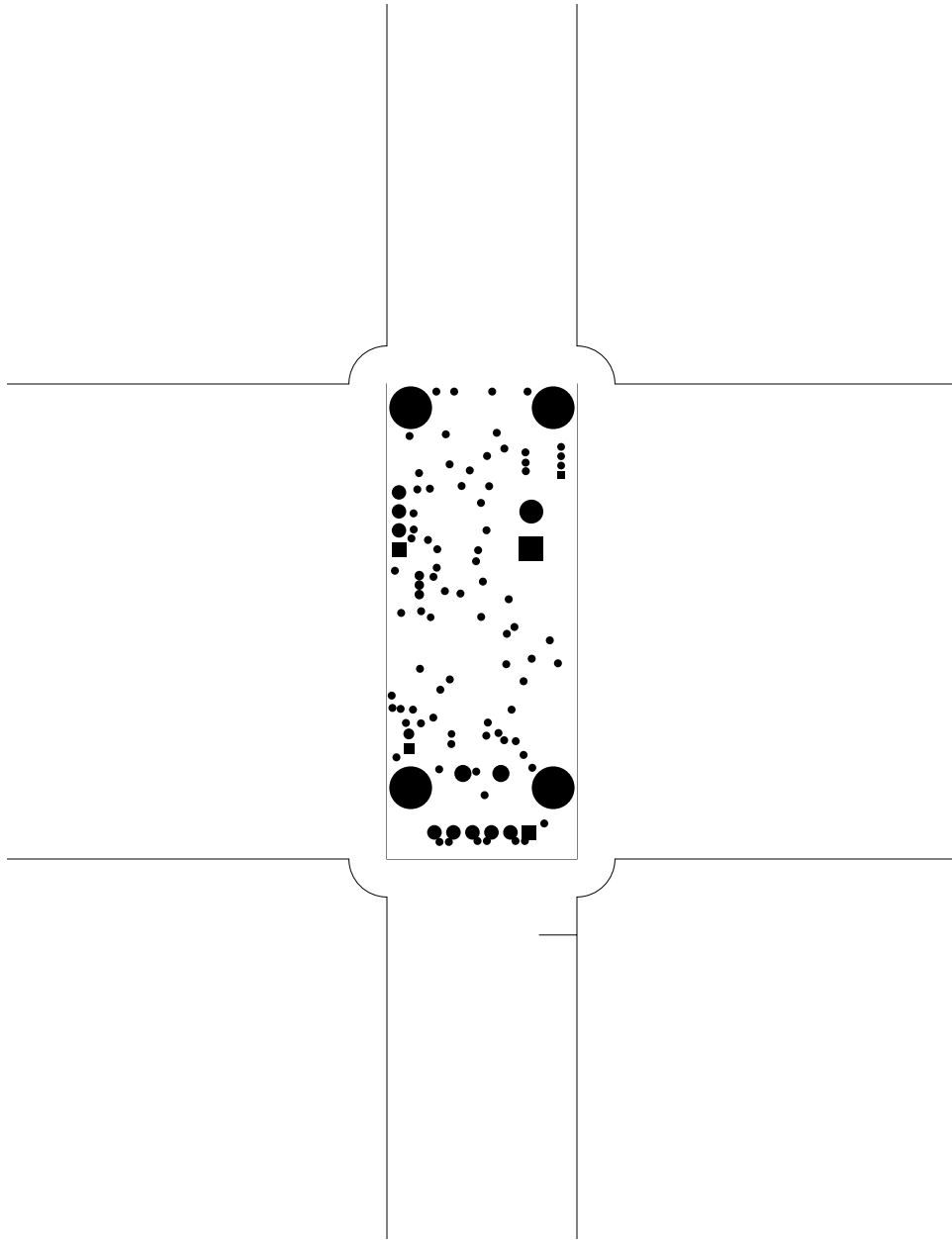


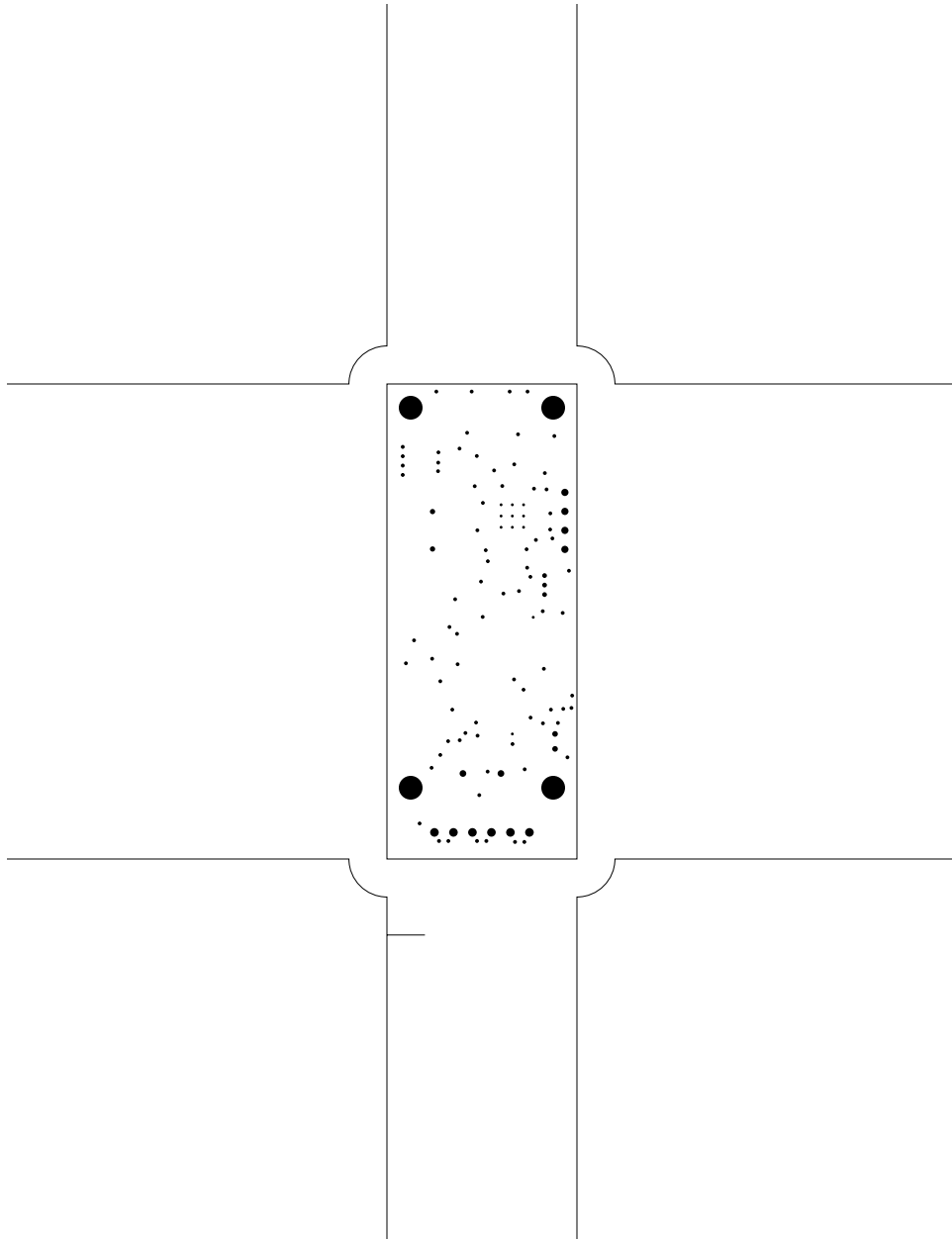


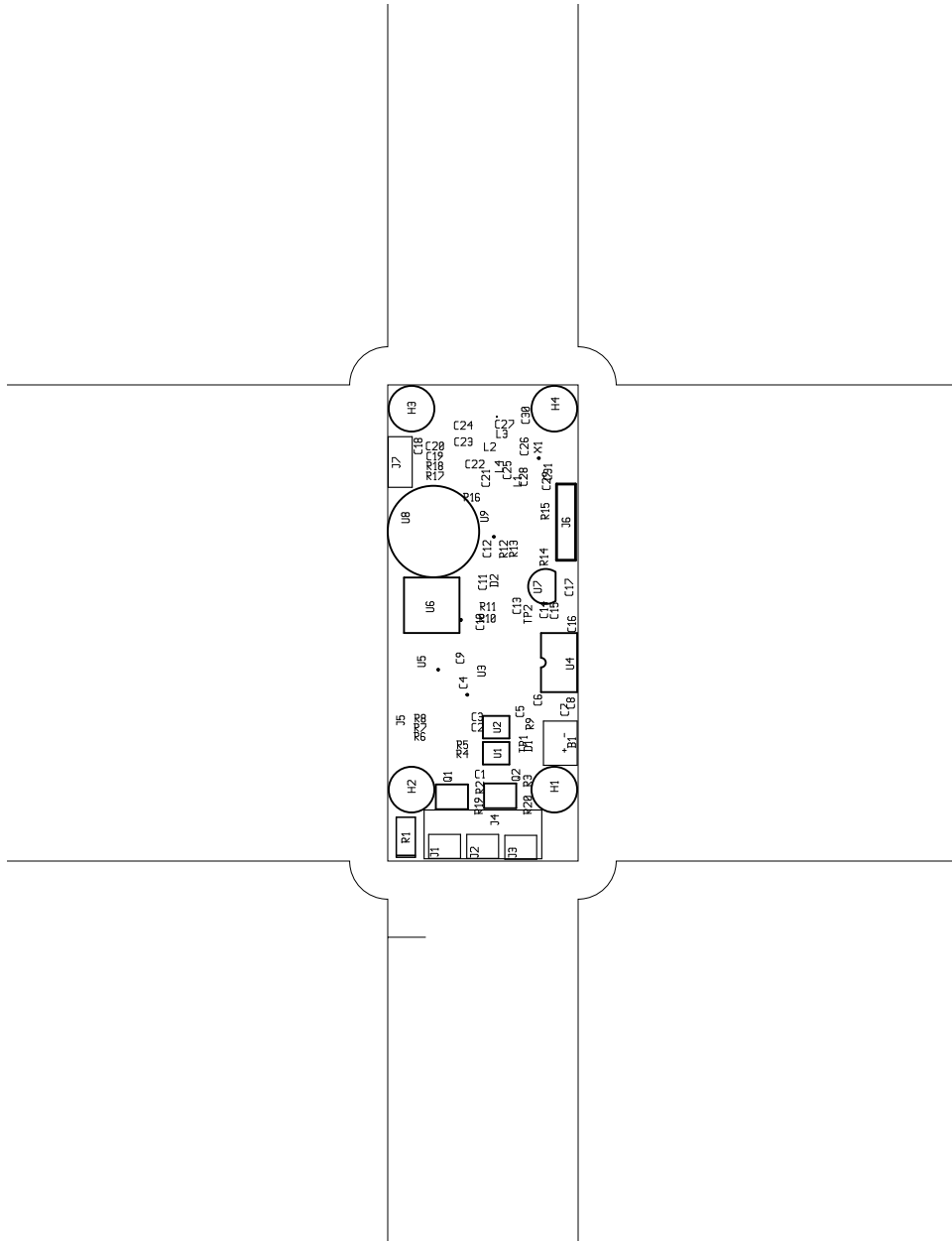


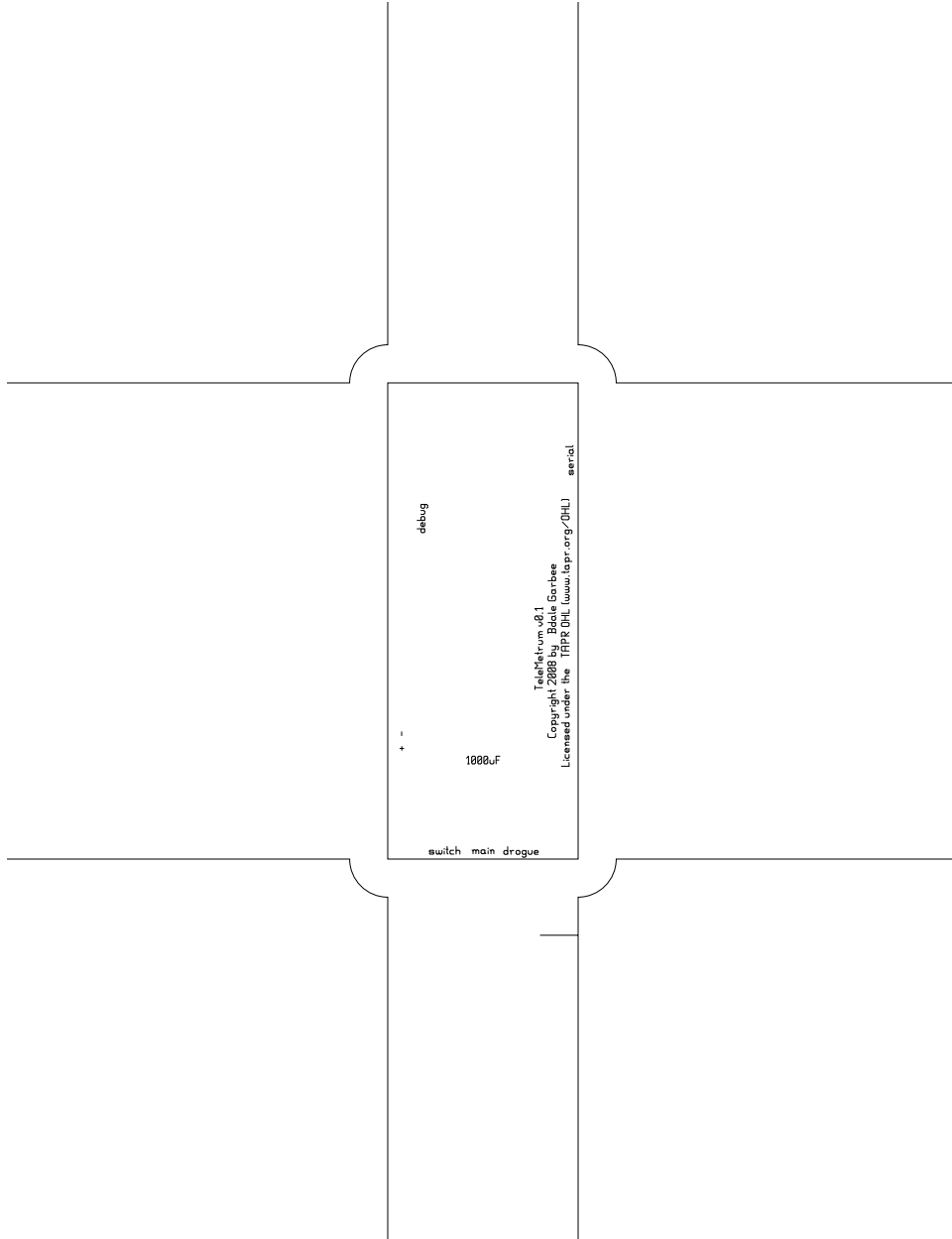


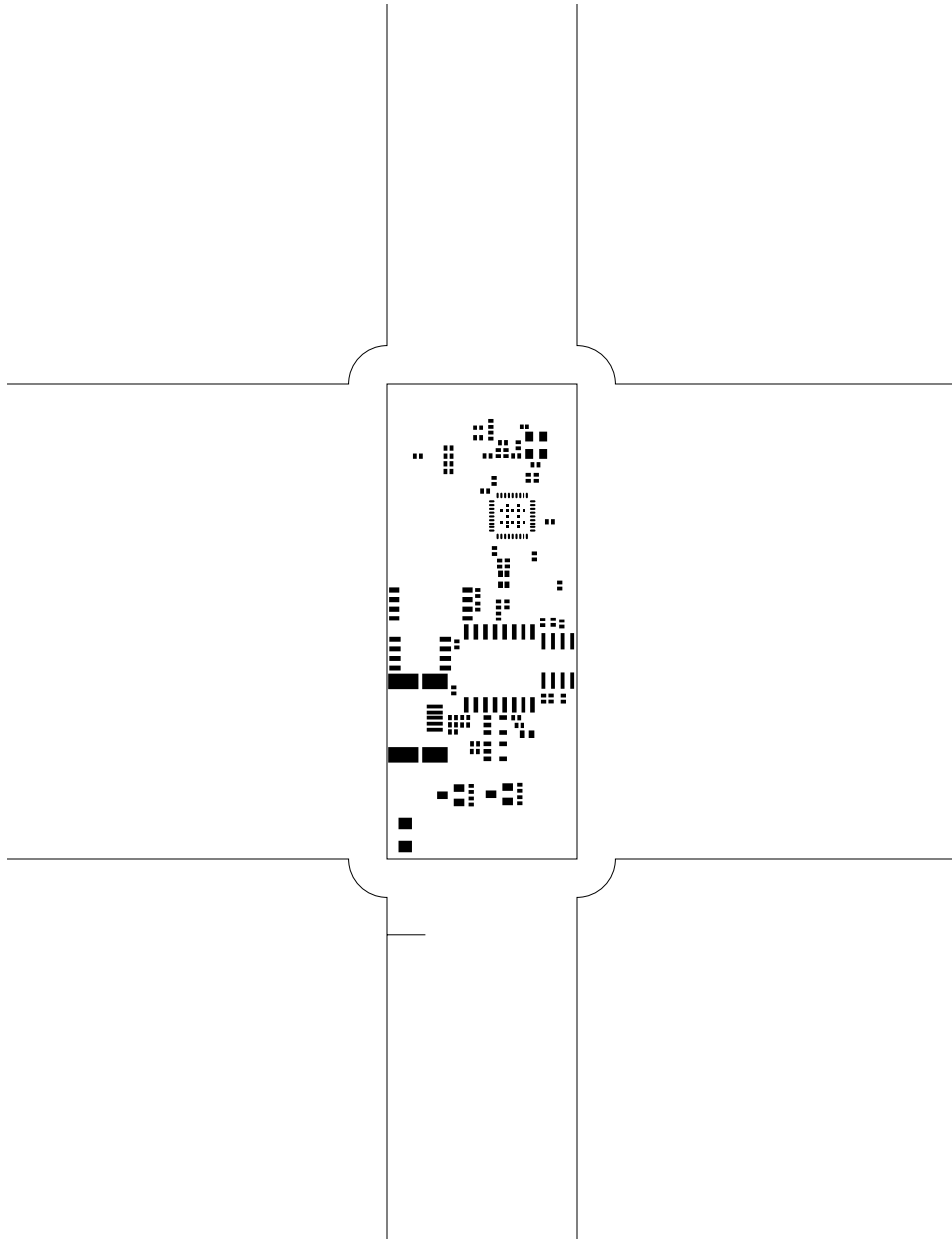


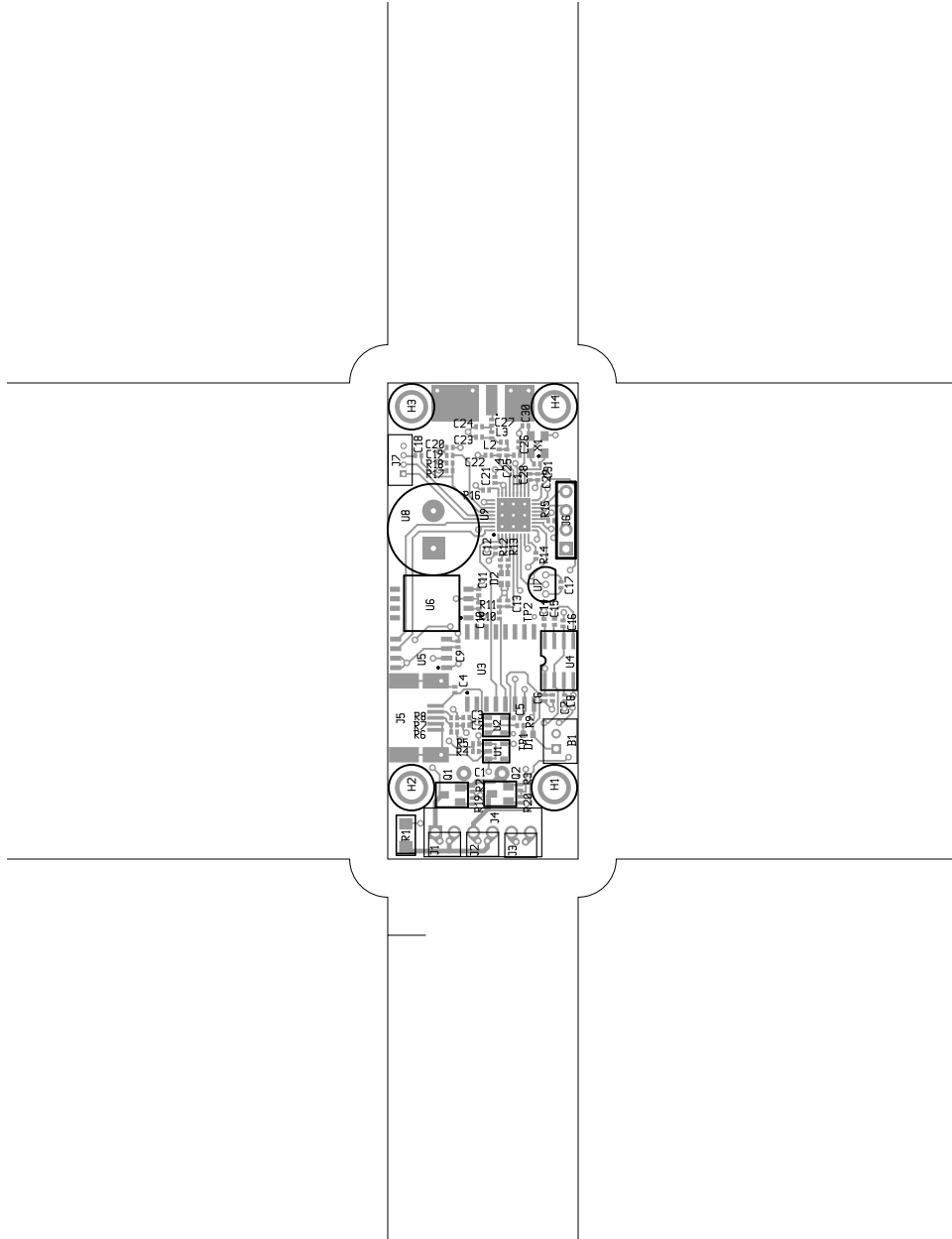




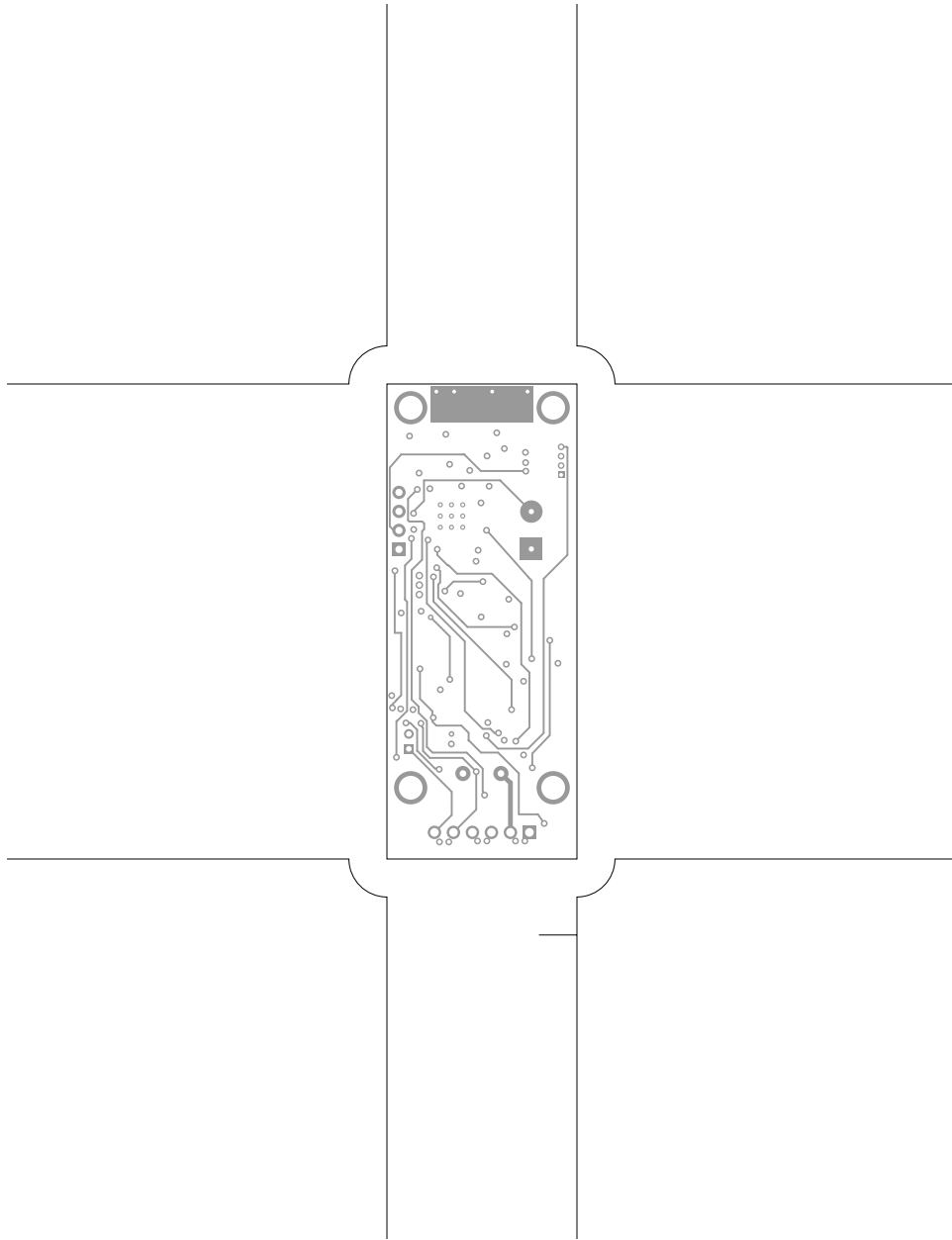








TeleMetrum, frontassembly, scale = 1:1.000
telemetrum.pcb



There are 9 different drill sizes used in this layout, 113 holes total

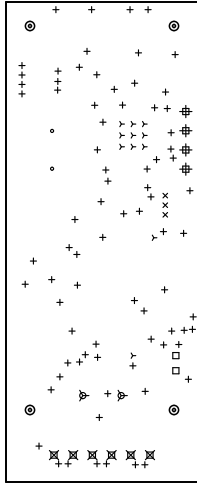
Symbol	Diam. (Inch)	Count	Plated?
y	0.015	11	YES
+	0.020	79	YES
x	0.025	3	YES
o	0.028	2	YES
□	0.030	2	YES
▽	0.035	2	YES
⊕	0.038	4	YES
⊗	0.045	6	YES
⊙	0.125	4	YES

Title: TeleMetrum - Fabrication Drawing

Author: Bdale Garbee

Date: Tue 21 Apr 2009 05:23:12 AM GMT UTC

Maximum Dimensions: 2500 mils wide, 1000 mils high



Board outline is the centerline of this 10 mil rectangle - 0.0 to 2500.1000 mils