

1. Table of Contents (This Page)
Created on Wed Sep 1 12:38:33 2021

2. bottomsilk

3. top

4. group5

5. group7

6. bottom

7. topmask

8. bottommask

9. topsilk

10. plated-drill

11. toppaste

12. bottompaste

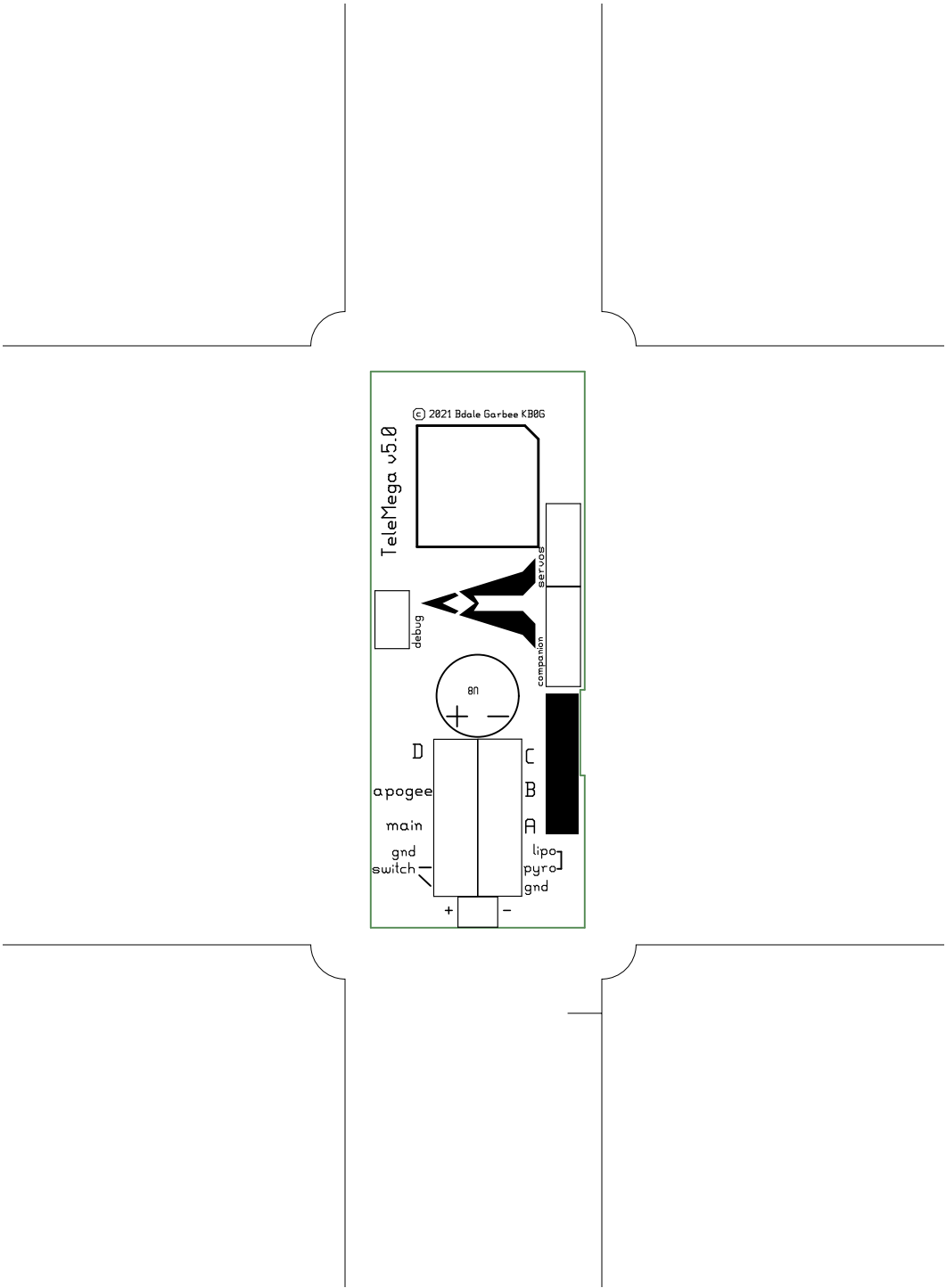
13. outline

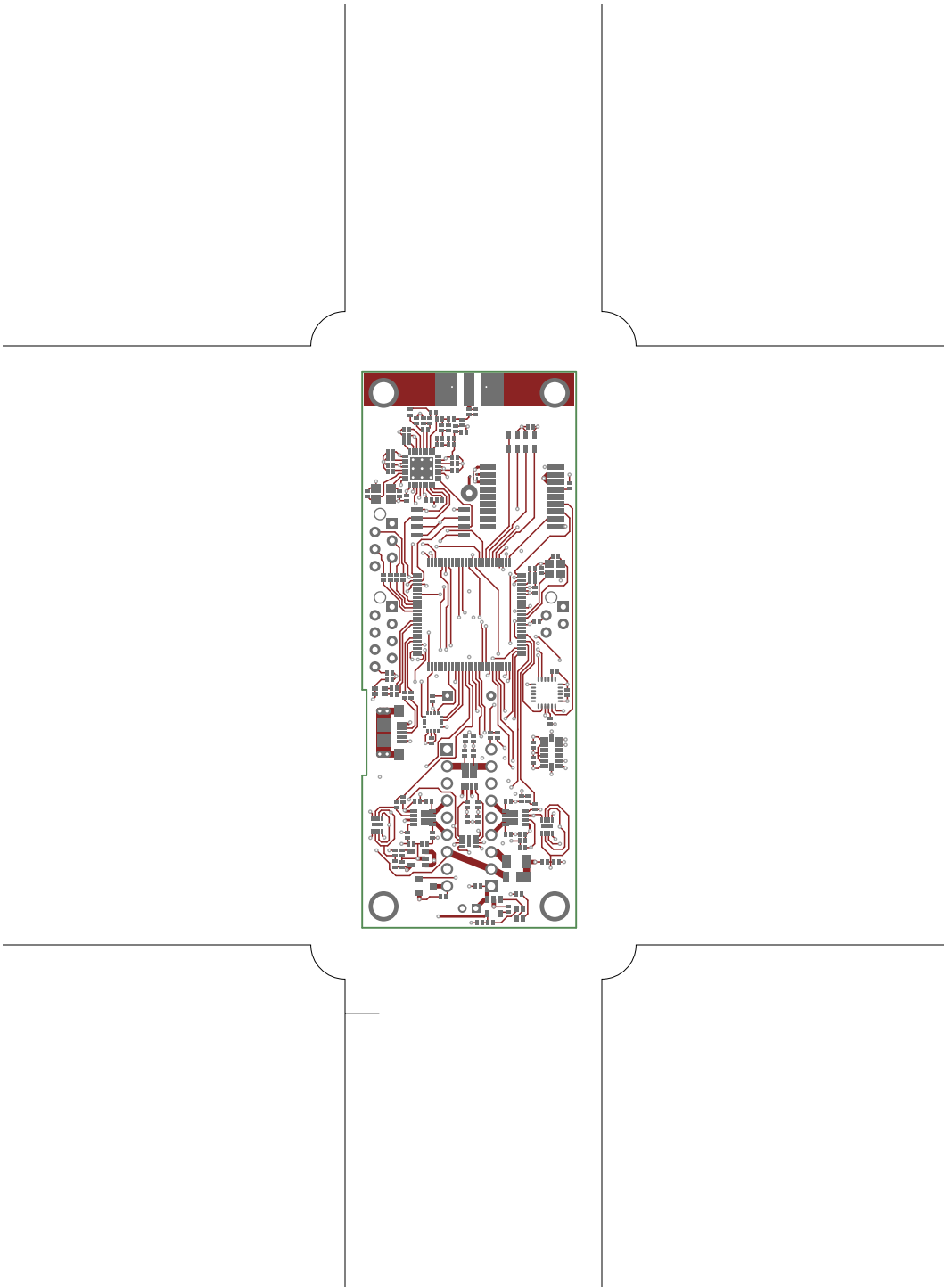
14. topassembly

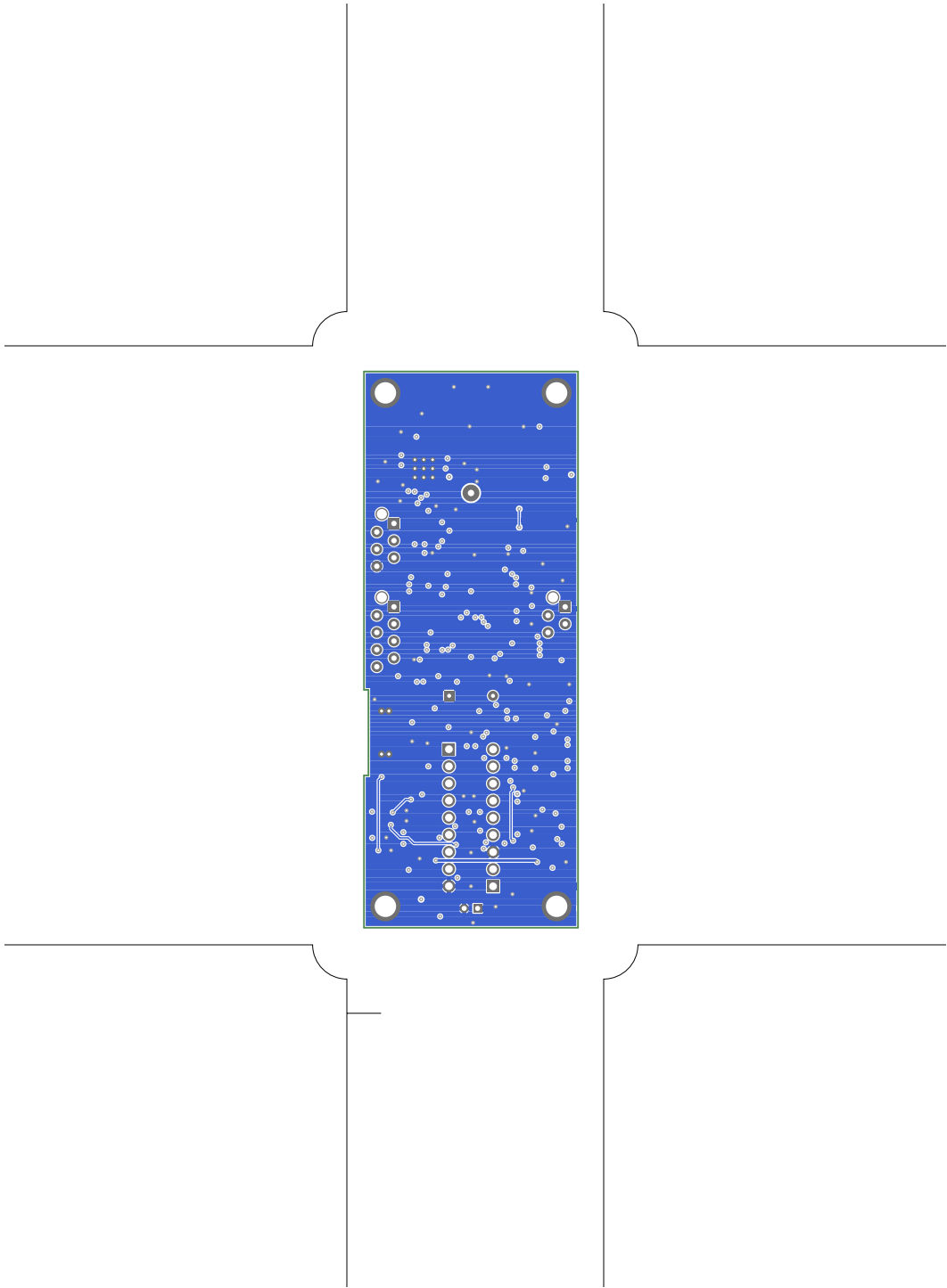
15. bottomassembly

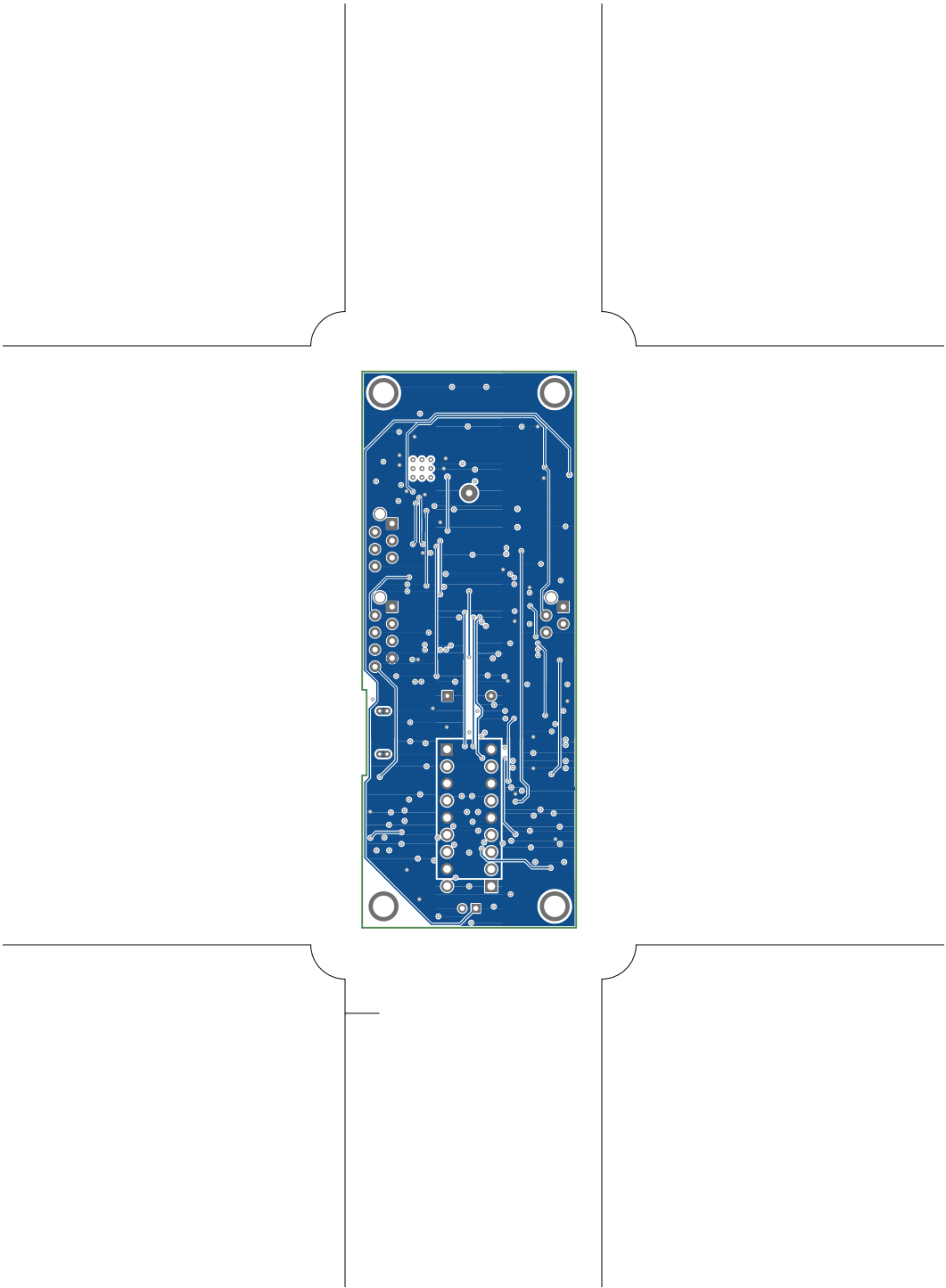
16. fab

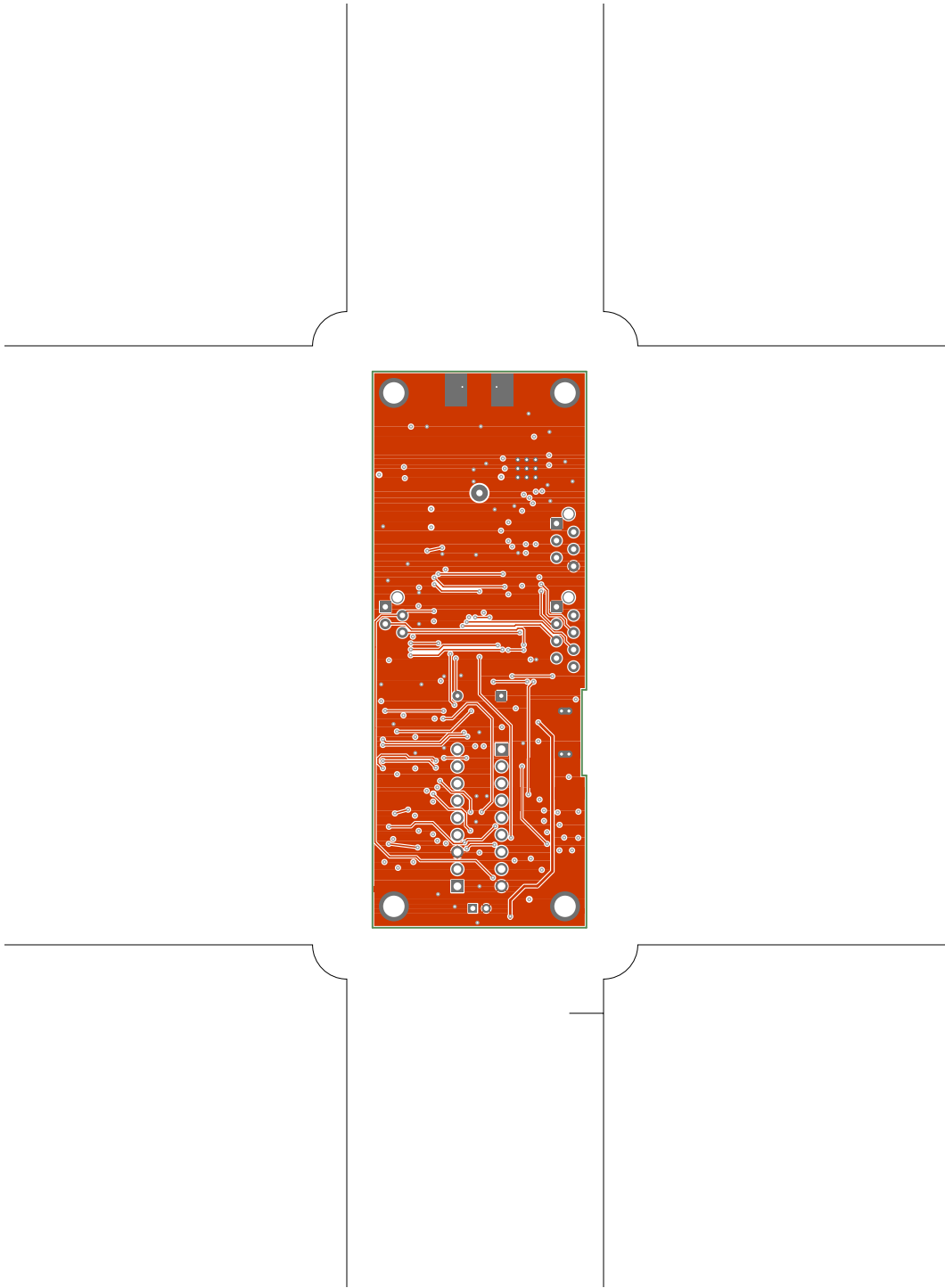
telemega.lht

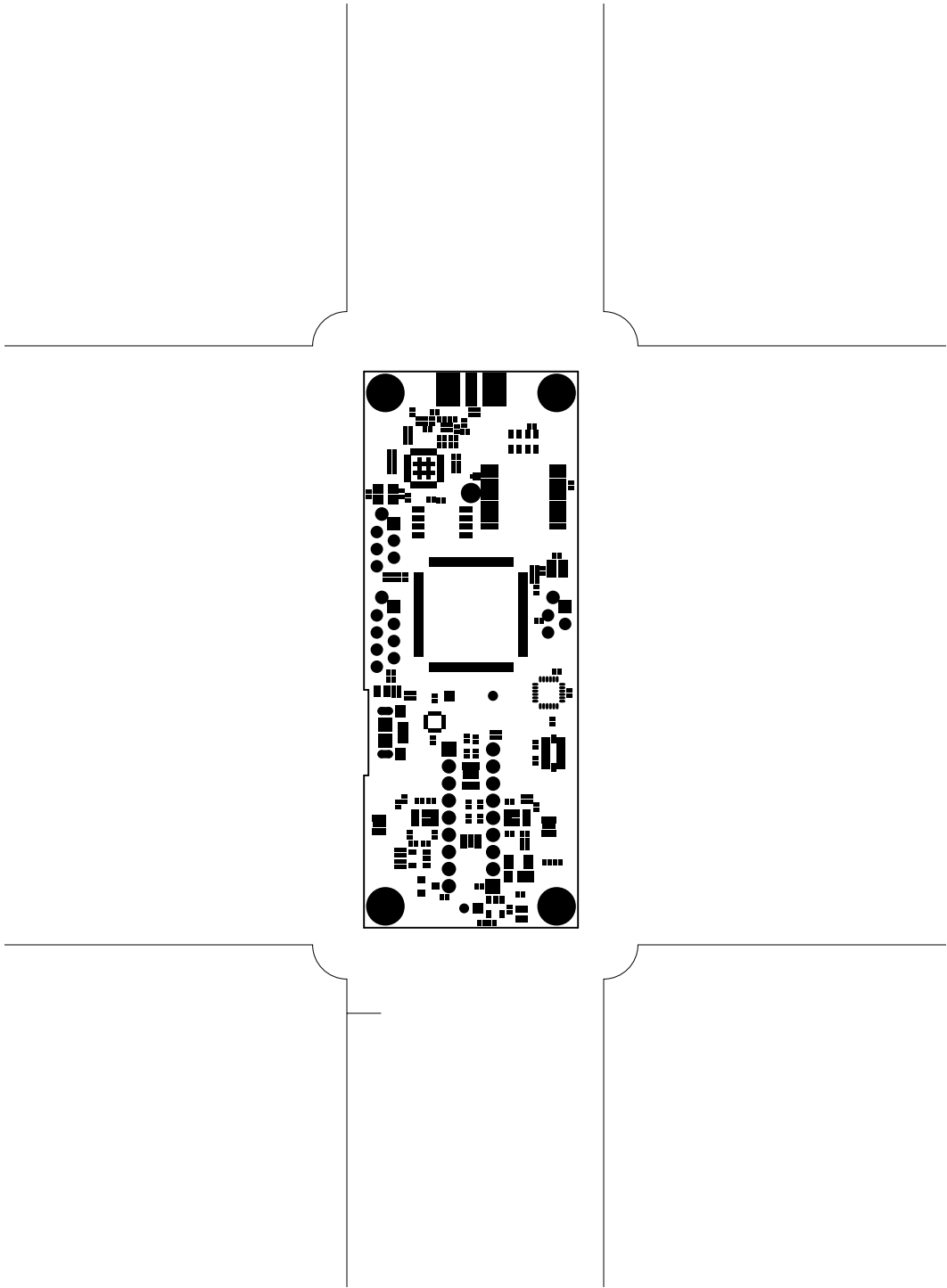


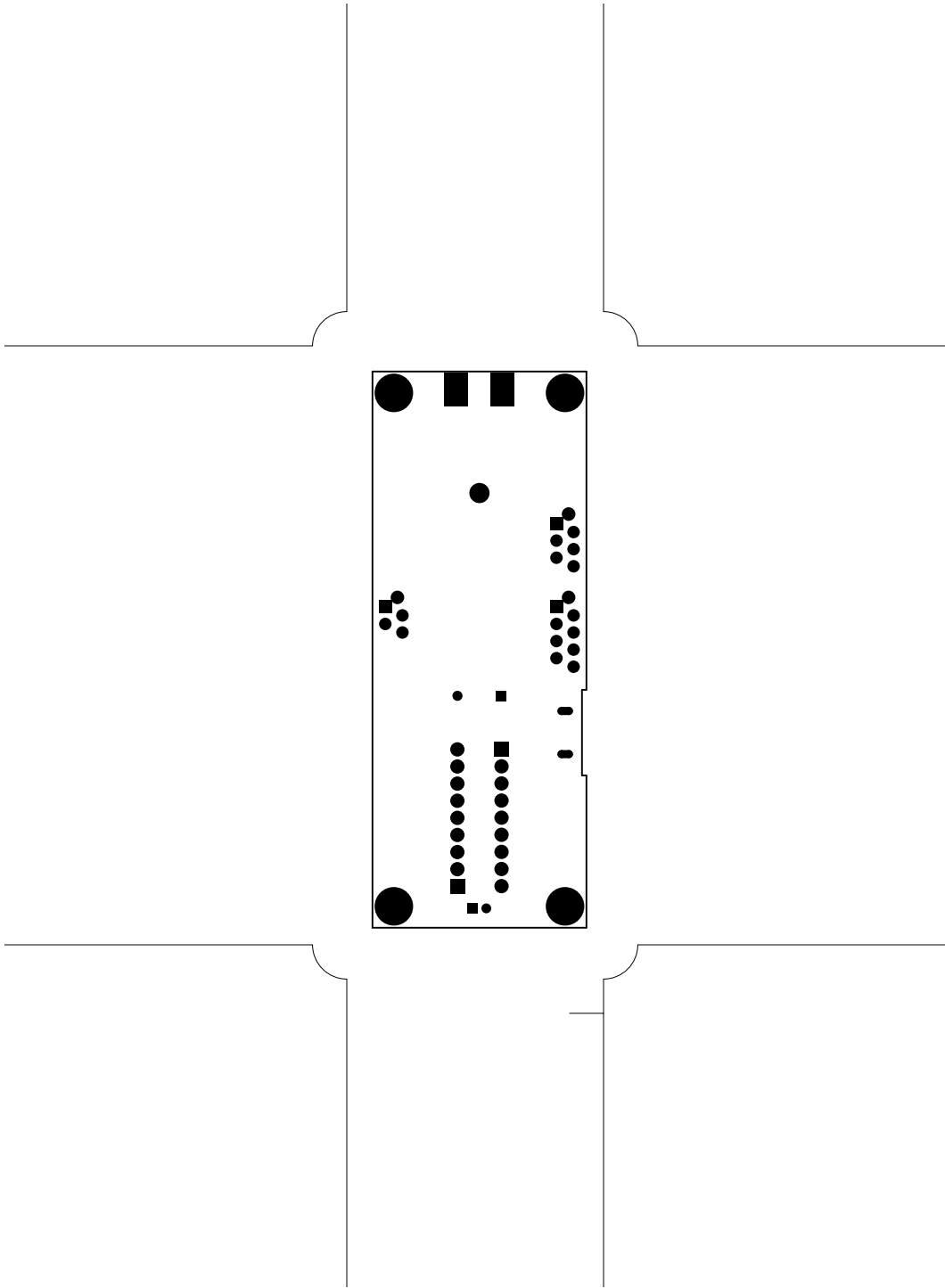


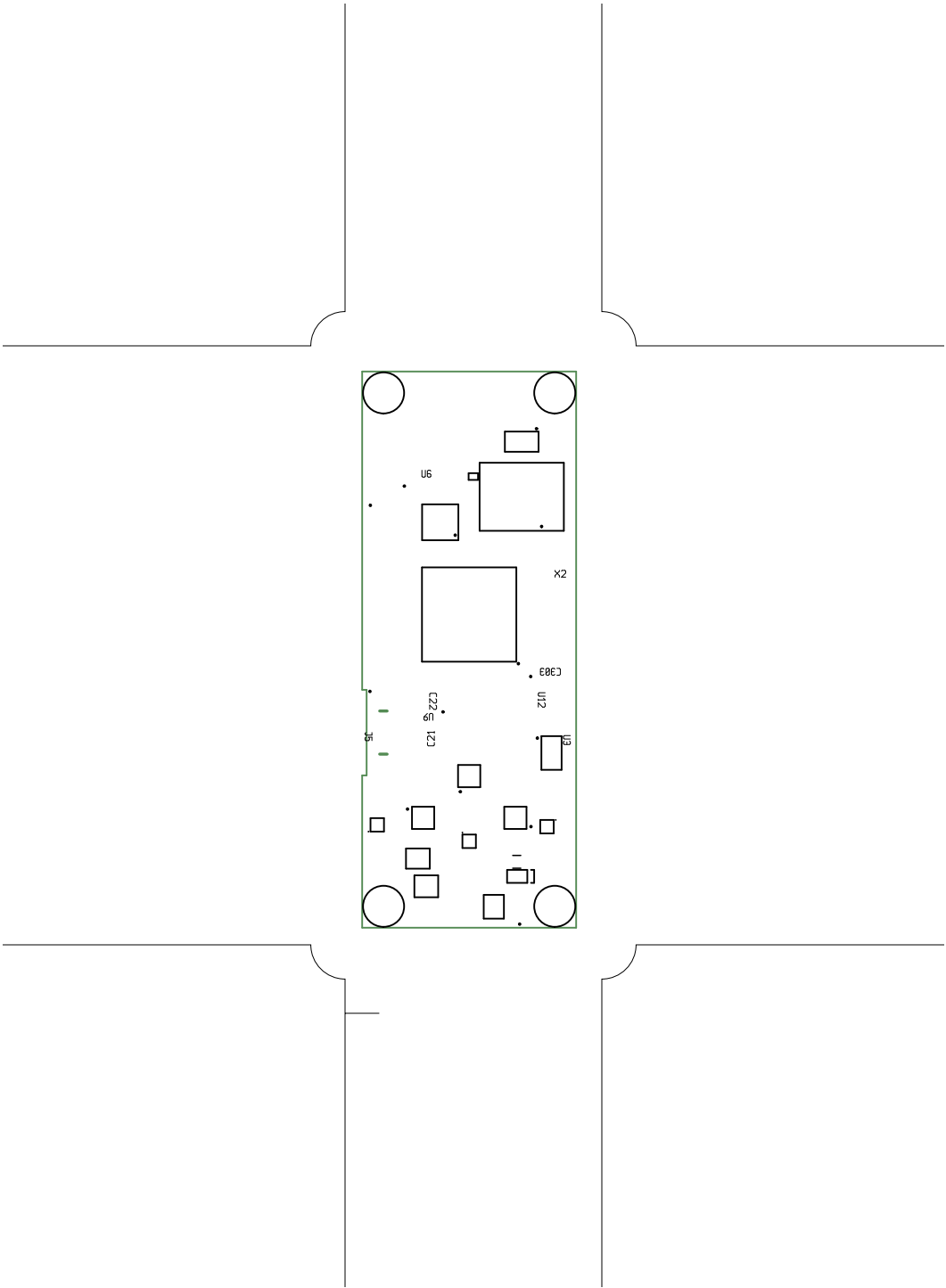


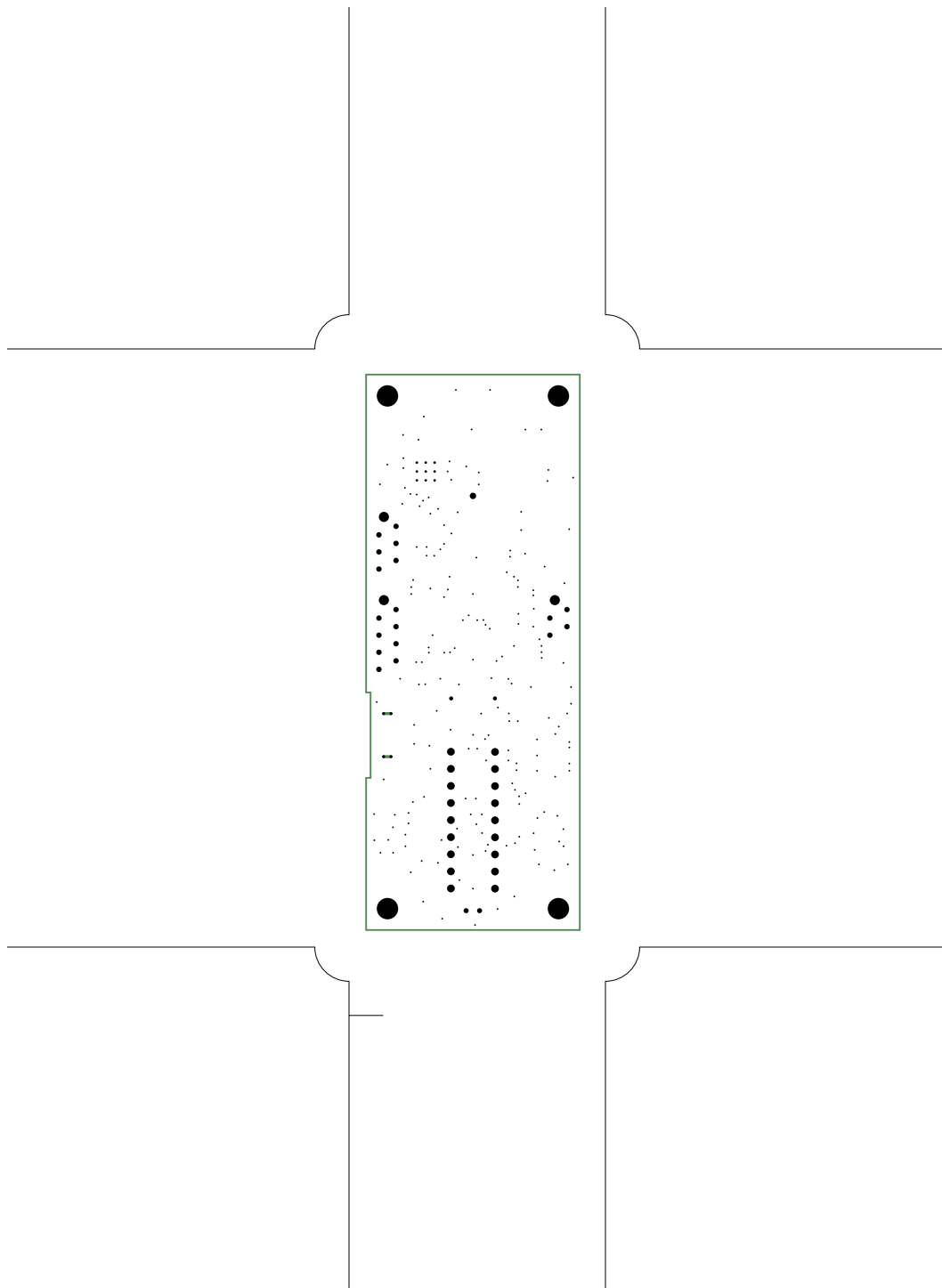


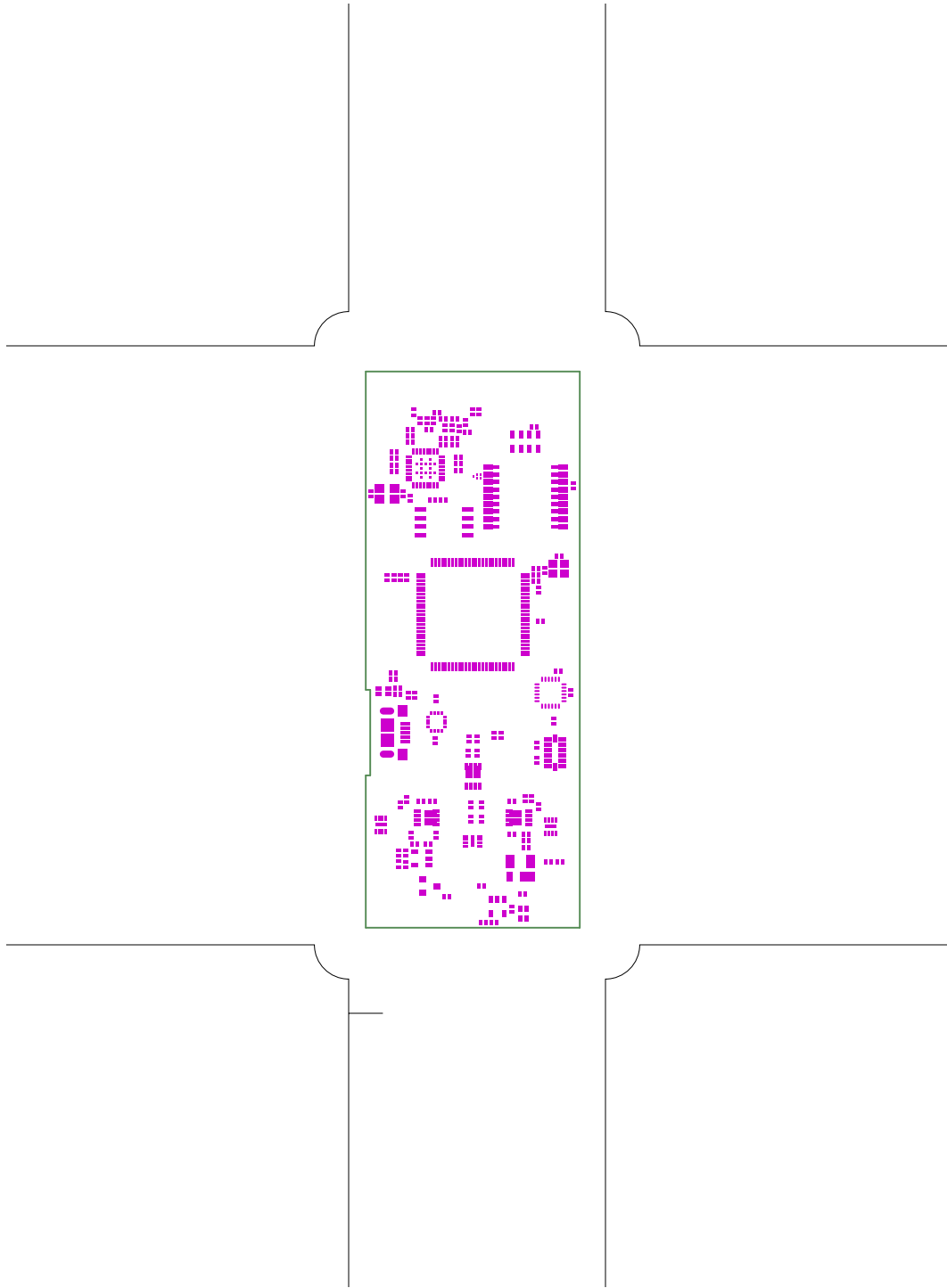


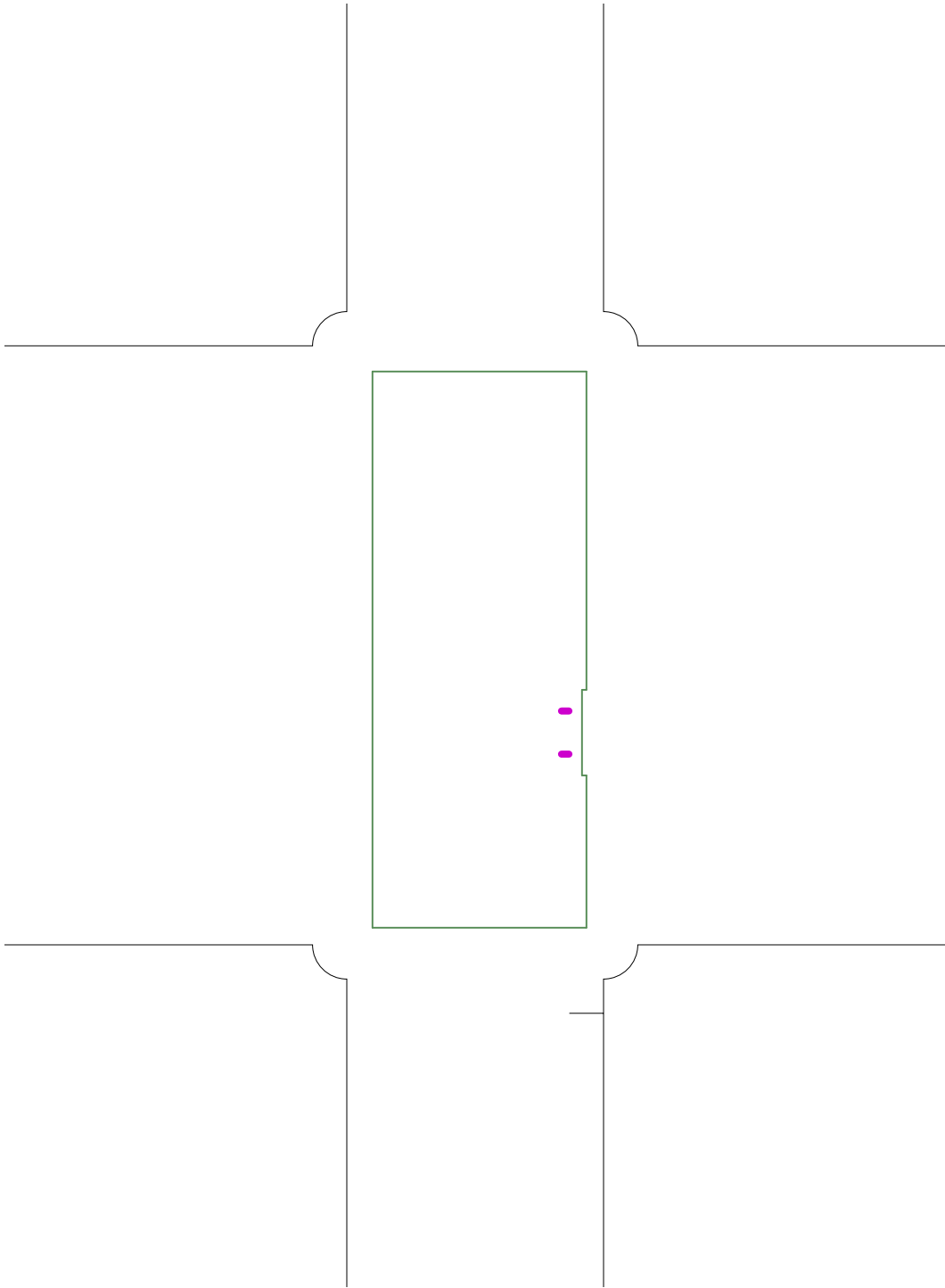


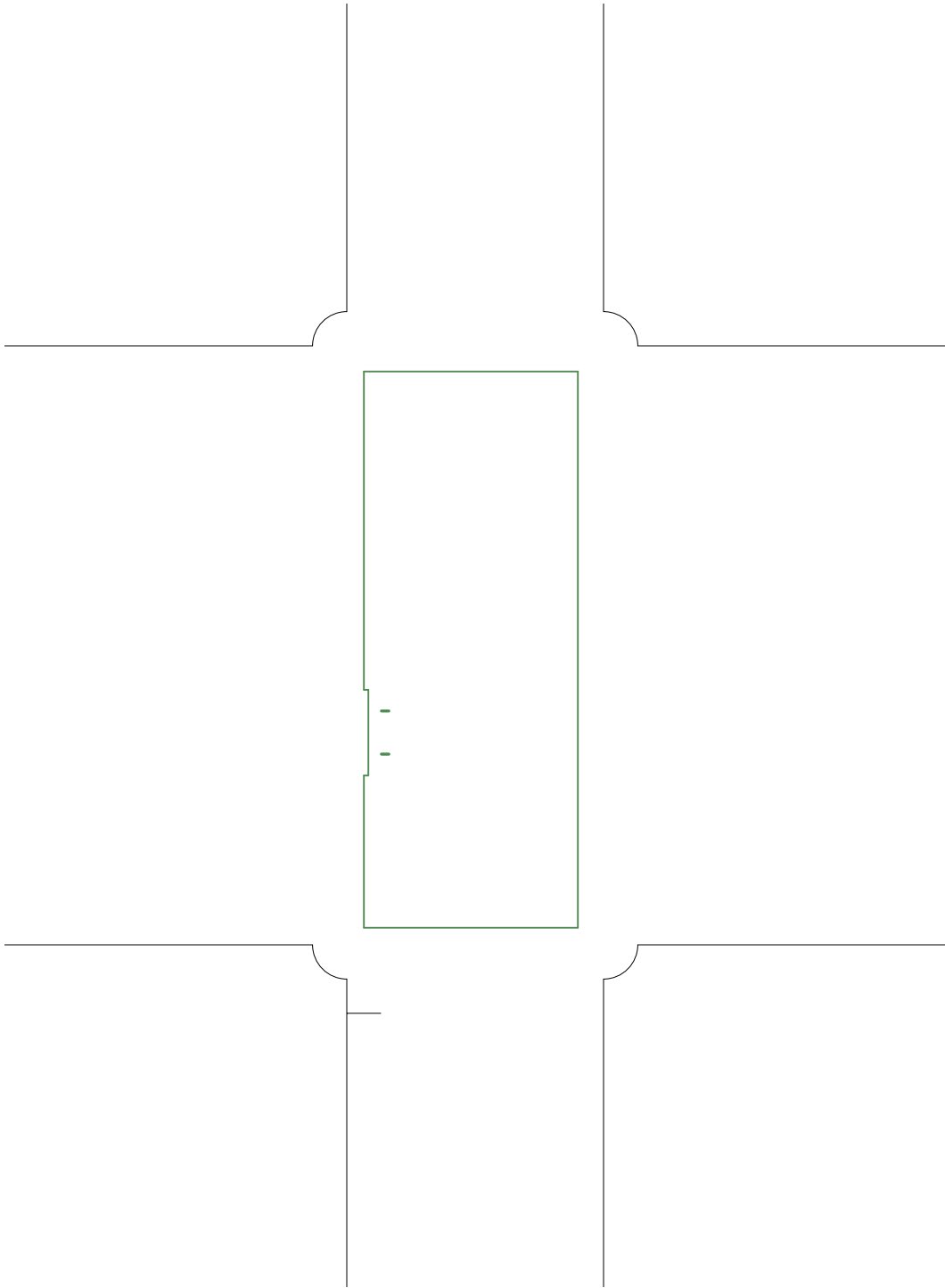


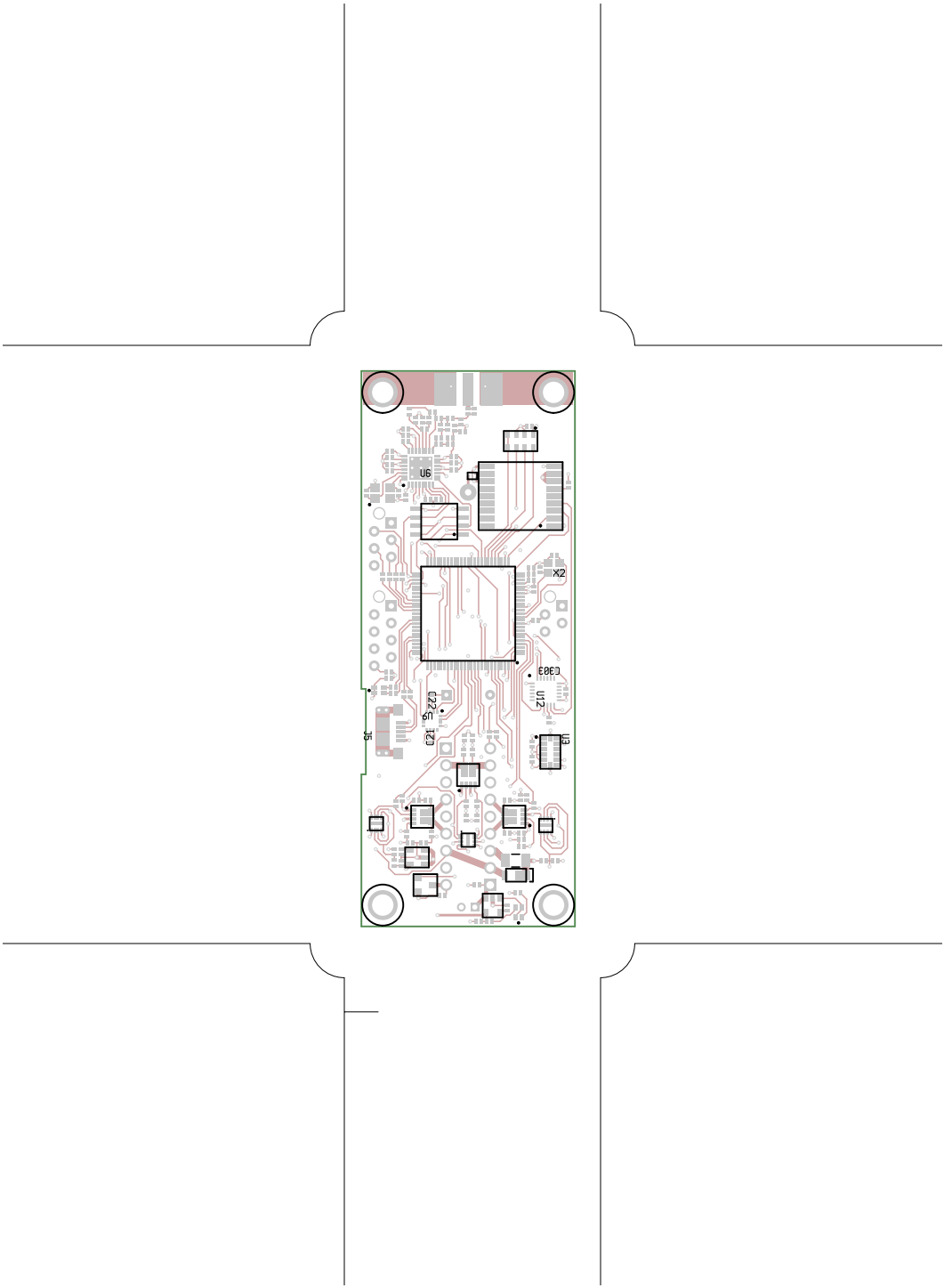


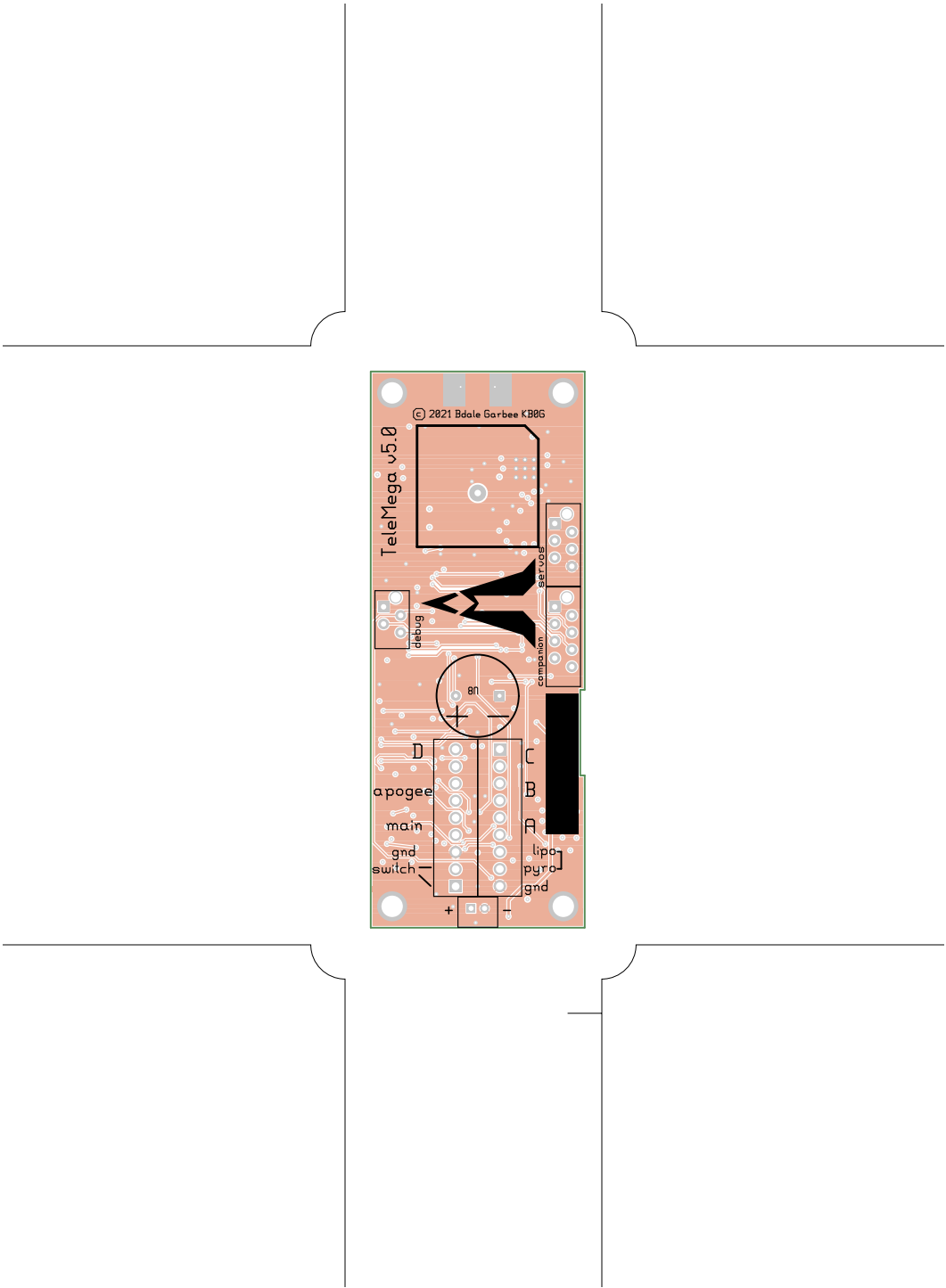












TeleMega, bottomassembly (mirrored), scale = 1:1.000
telemega.lht

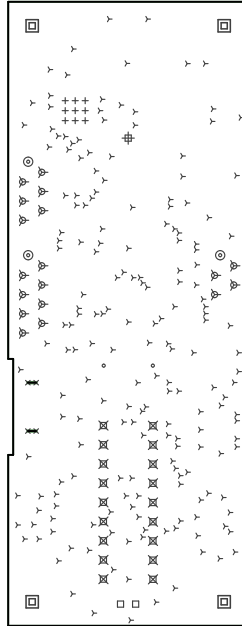
There are 10 different drill sizes used in this layout, 250 holes total

Symbol	Diam. (Inch)	Count	Plated?
Y	0.010	189	YES
+	0.015	9	YES
x	0.018	4	YES
o	0.024	2	YES
□	0.030	2	YES
∇	0.032	18	YES
⊕	0.037	1	YES
⊗	0.045	18	YES
⊙	0.059	3	YES
⊠	0.125	4	YES

Title: TeleMega - Fabrication Drawing

Author: Bdale Garbee

Date: 2021-09-01 18:38:33 UTC



Board outline is the centerline of this path