

1. Table of Contents (This Page)
Created on Wed Sep 1 12:40:58 2021

2. bottomsilk

3. top

4. group5

5. group7

6. bottom

7. topmask

8. bottommask

9. topsilk

10. plated-drill

11. toppaste

12. bottompaste

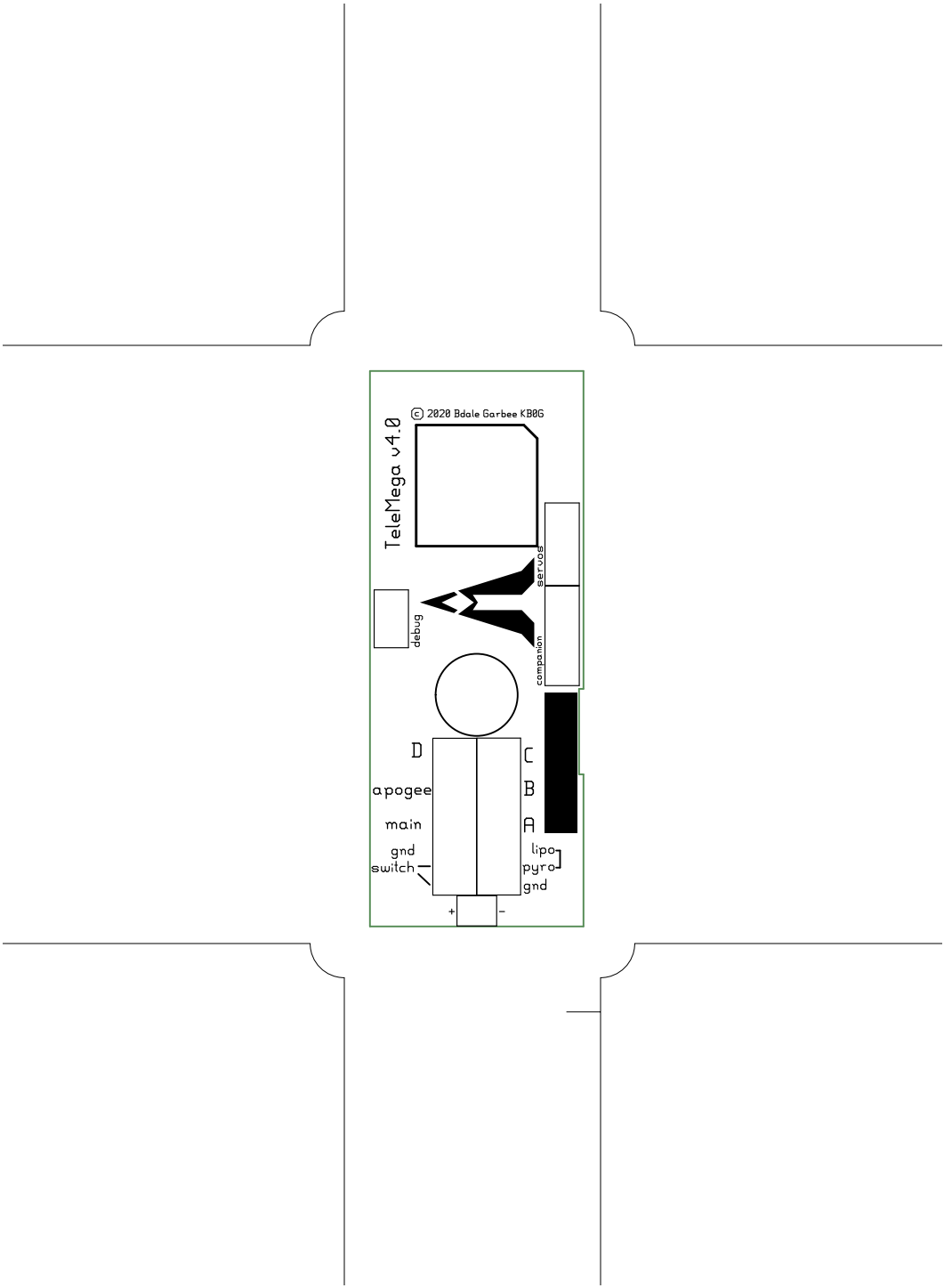
13. outline

14. topassembly

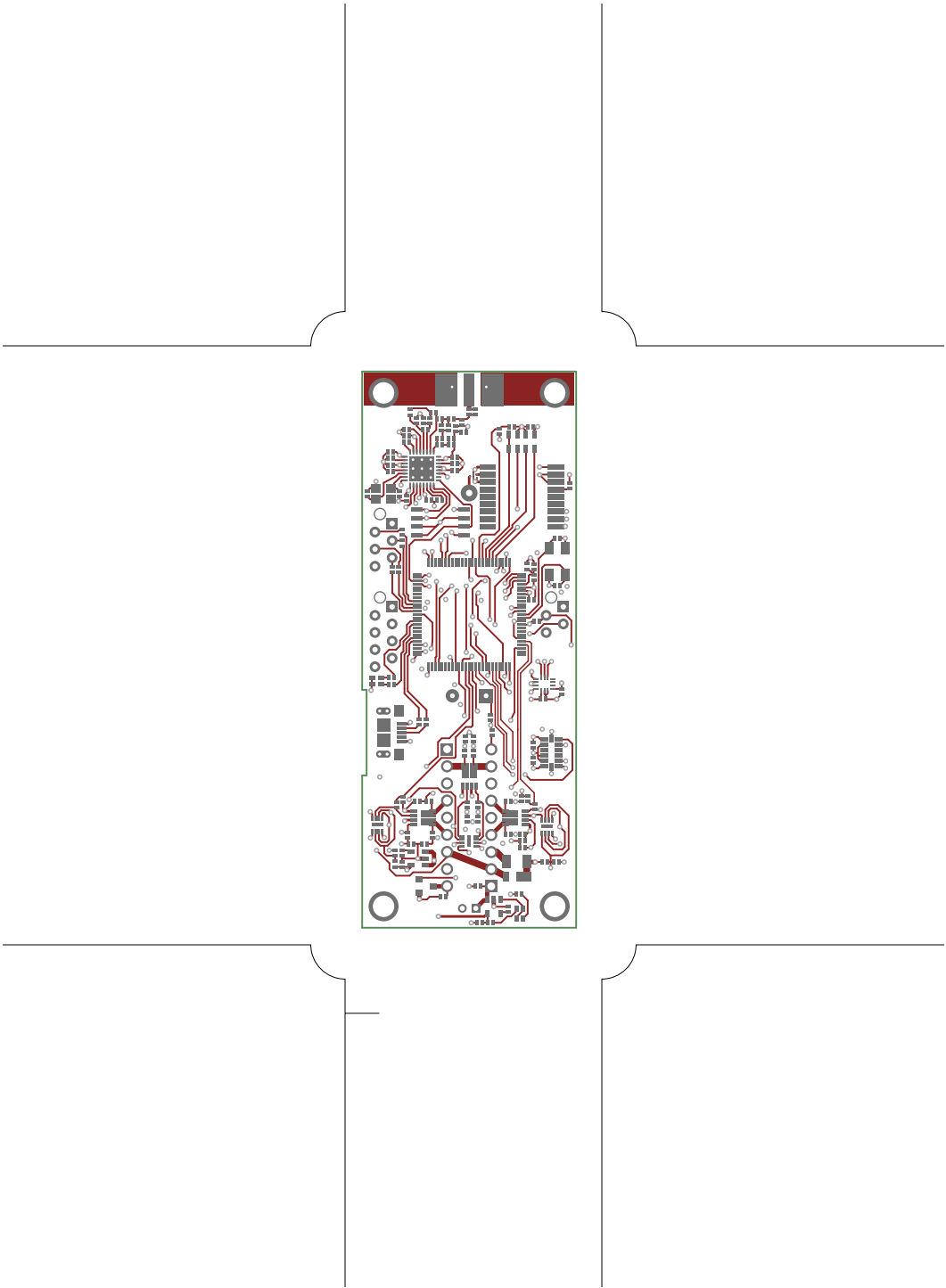
15. bottomassembly

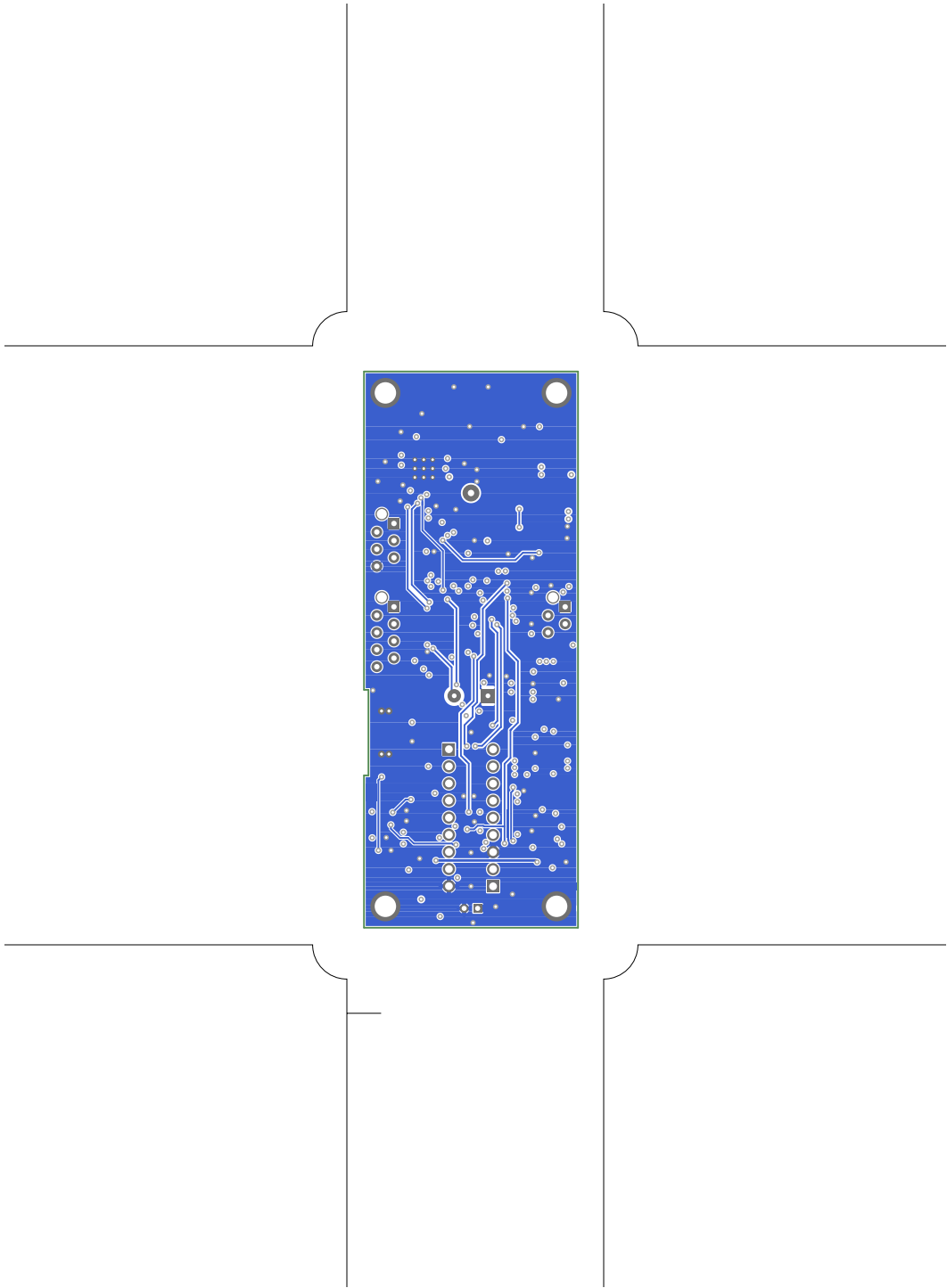
16. fab

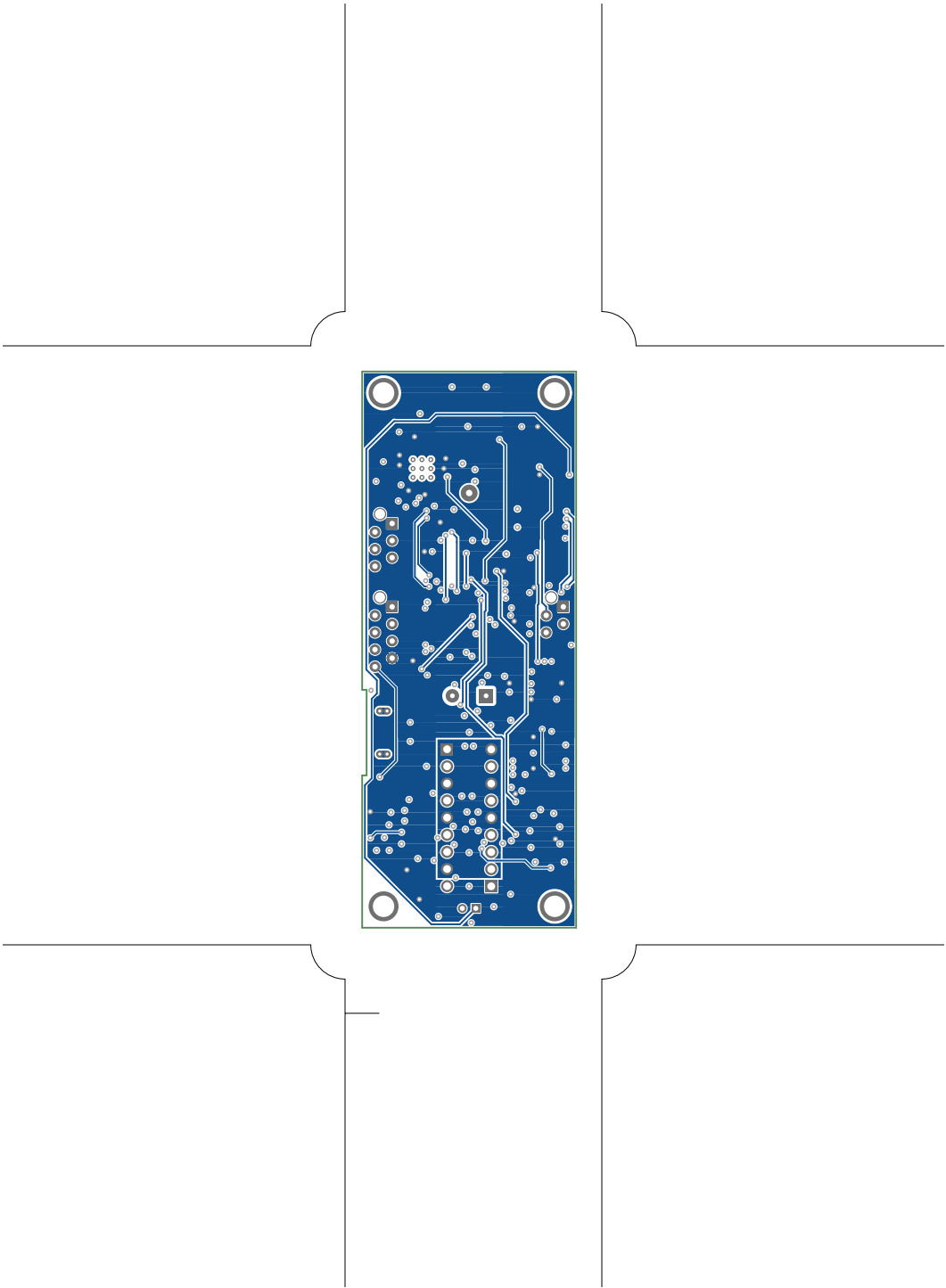
telemega.lht

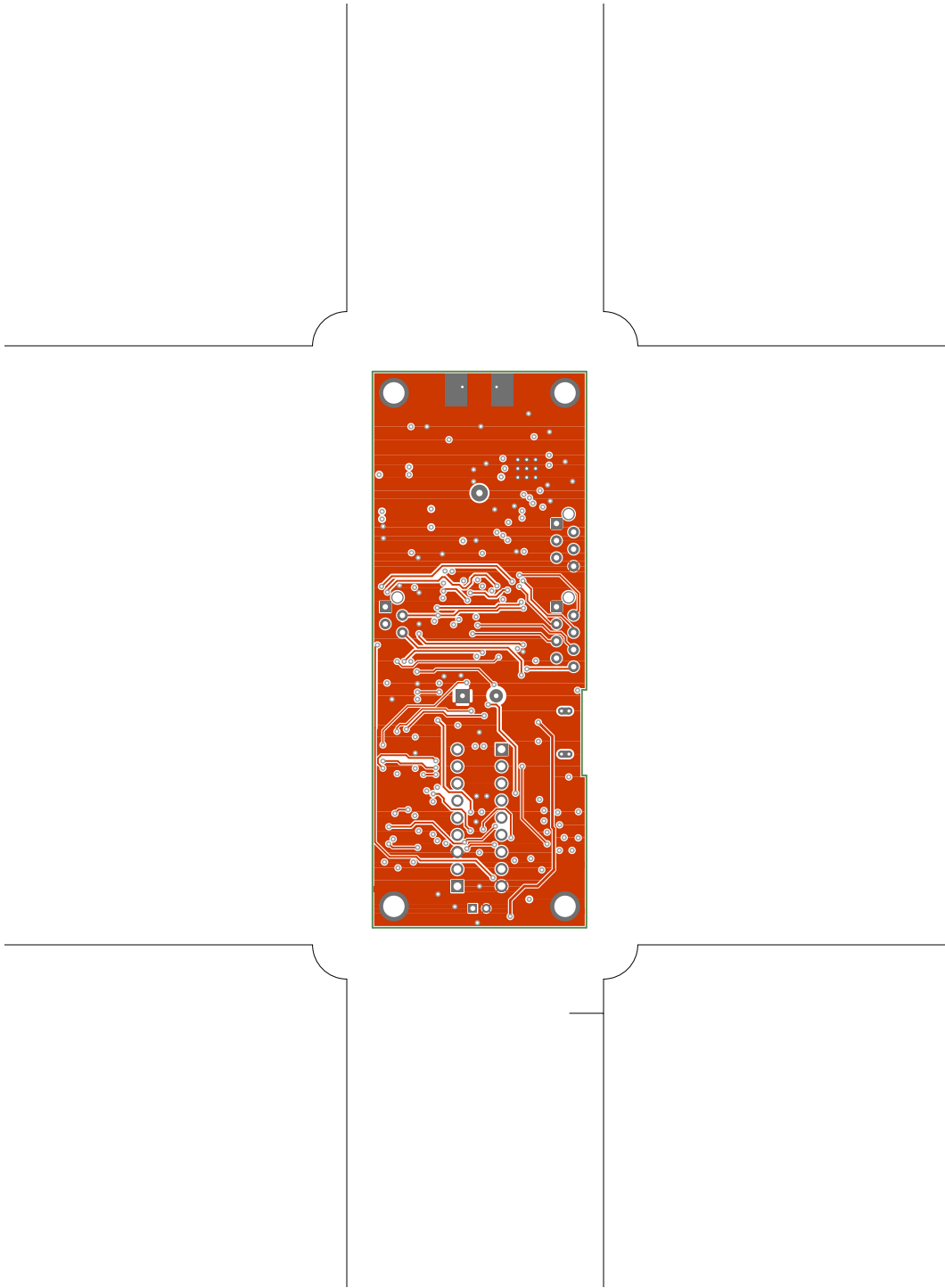


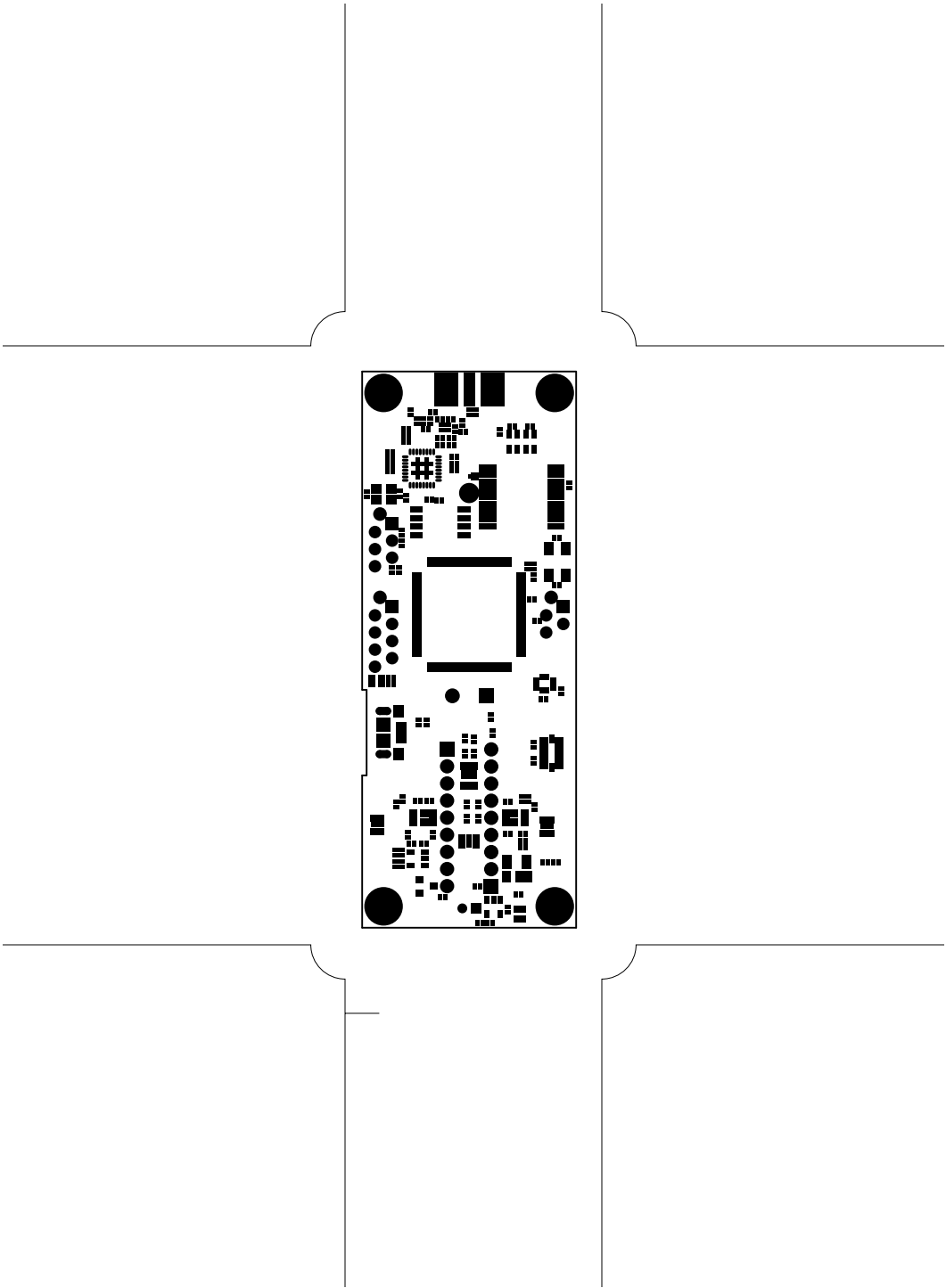
TeleMega, bottomsilk (mirrored), scale = 1:1.000
telemega.lht

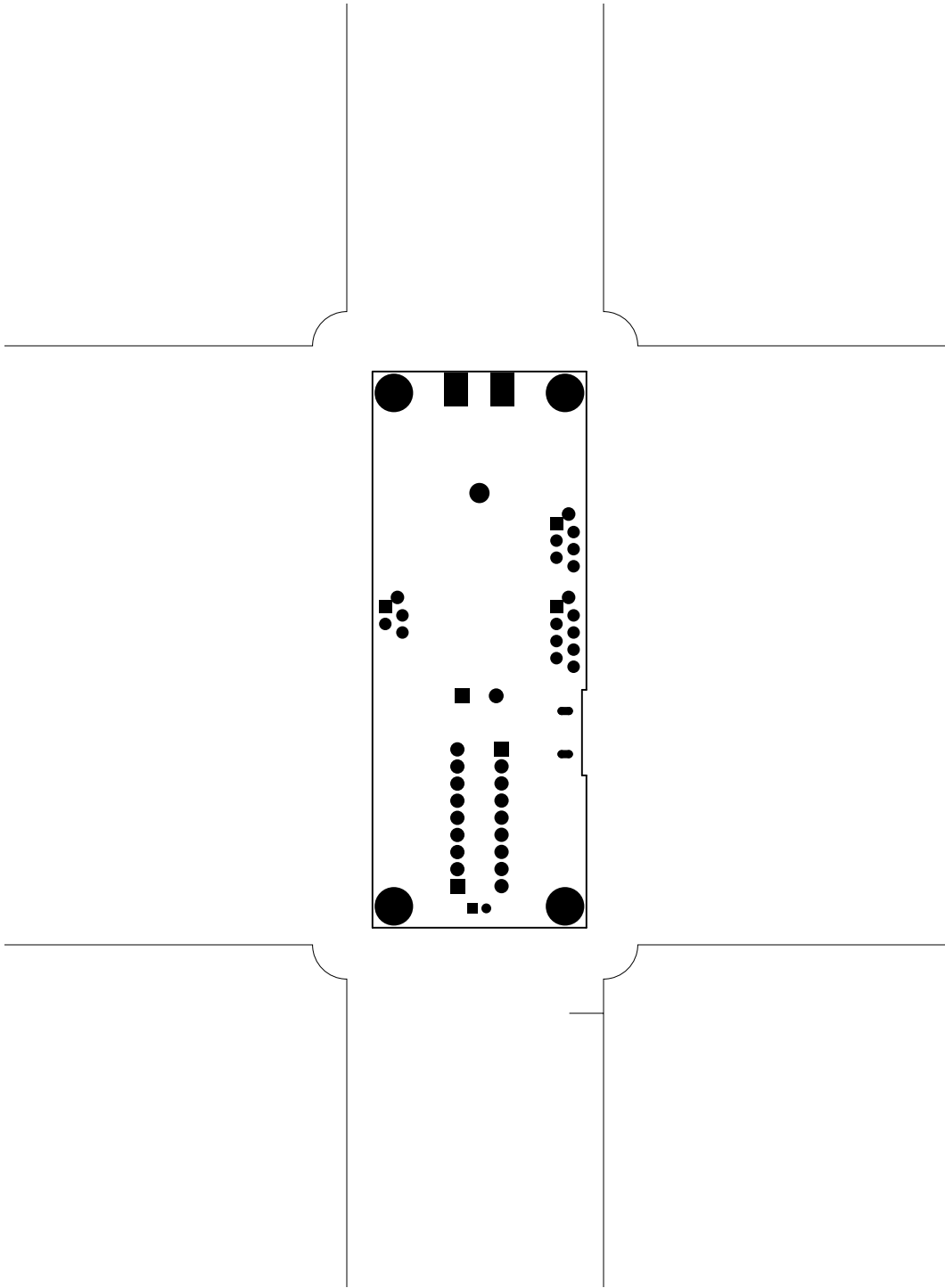


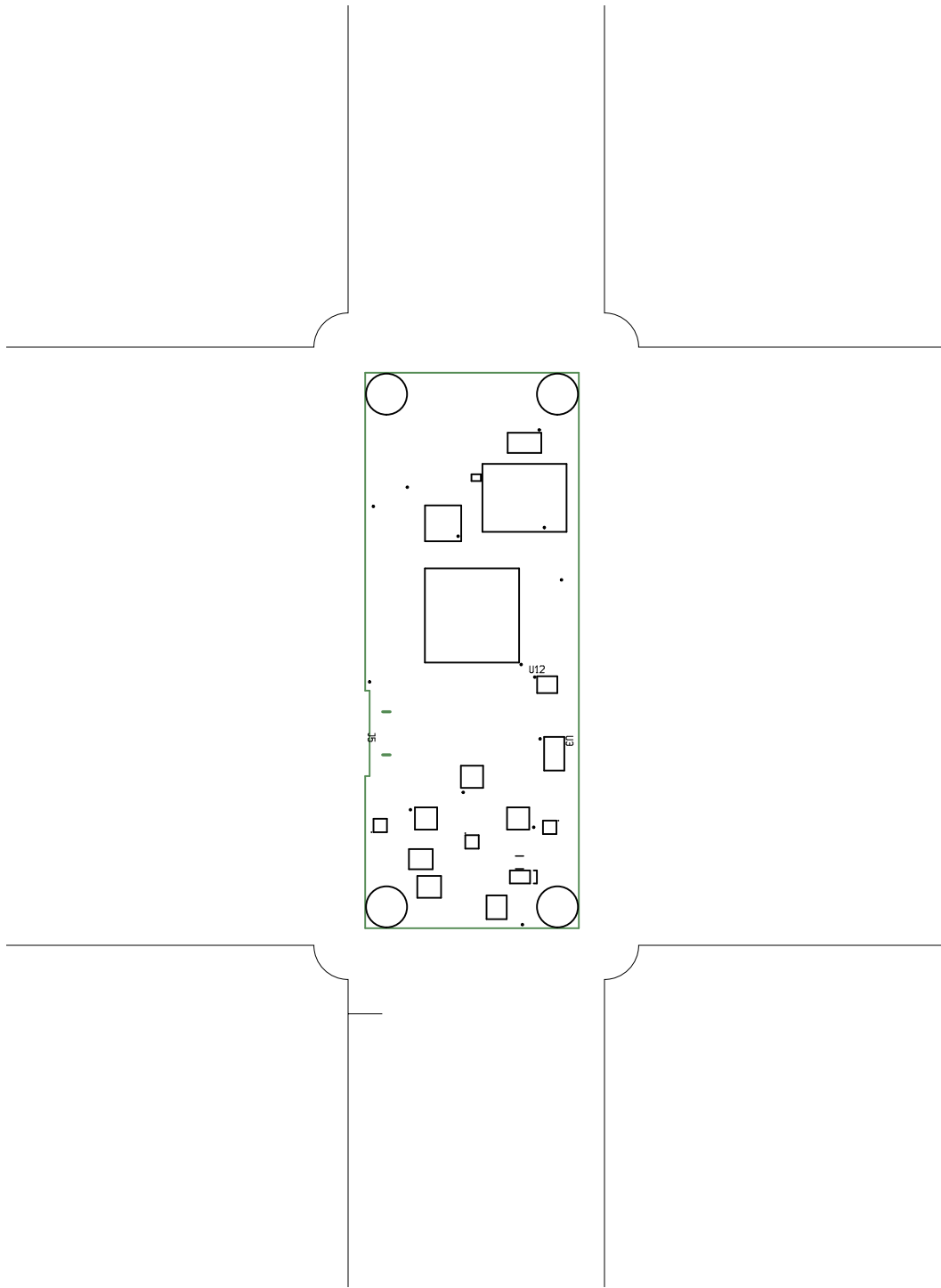


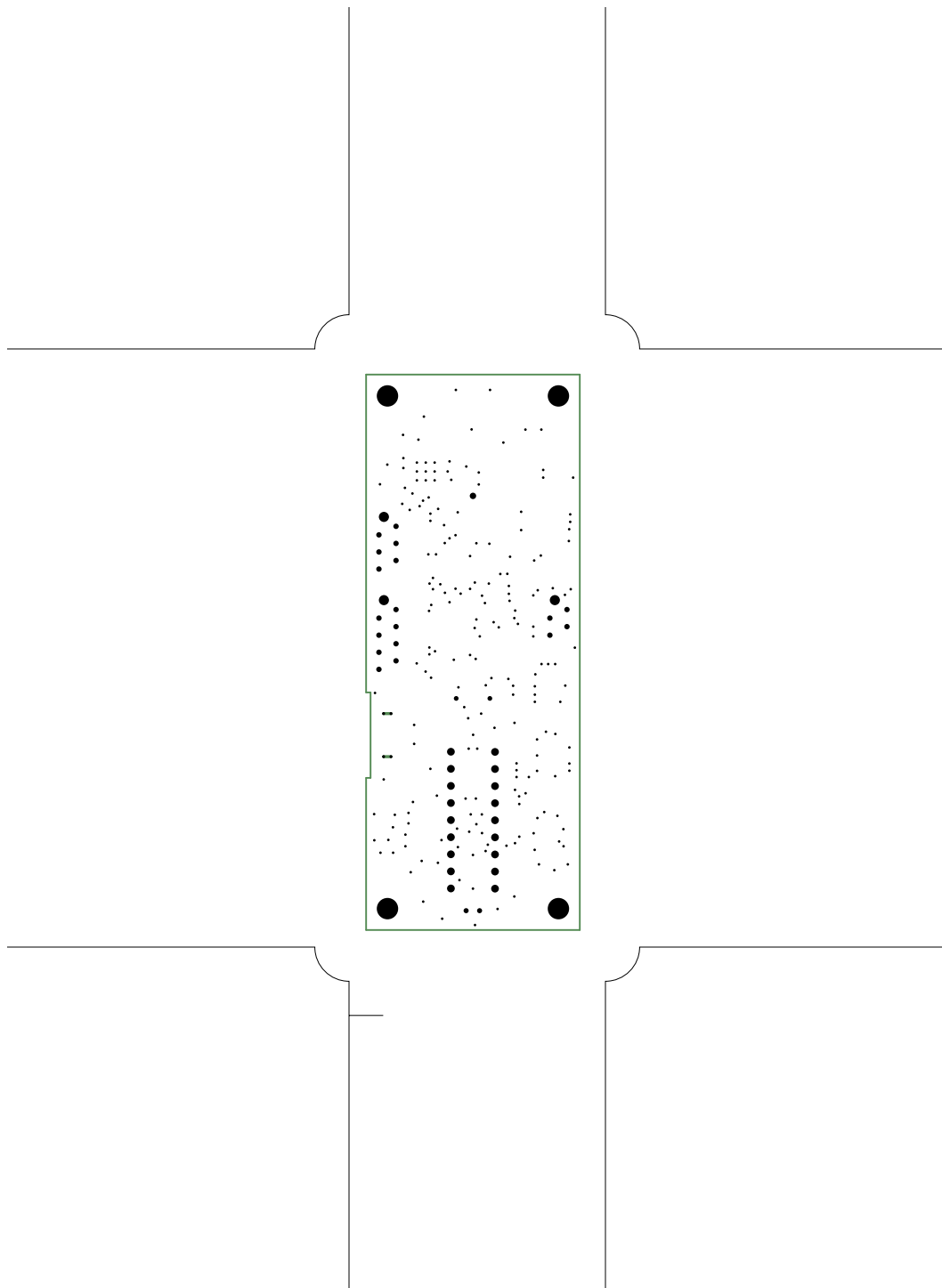


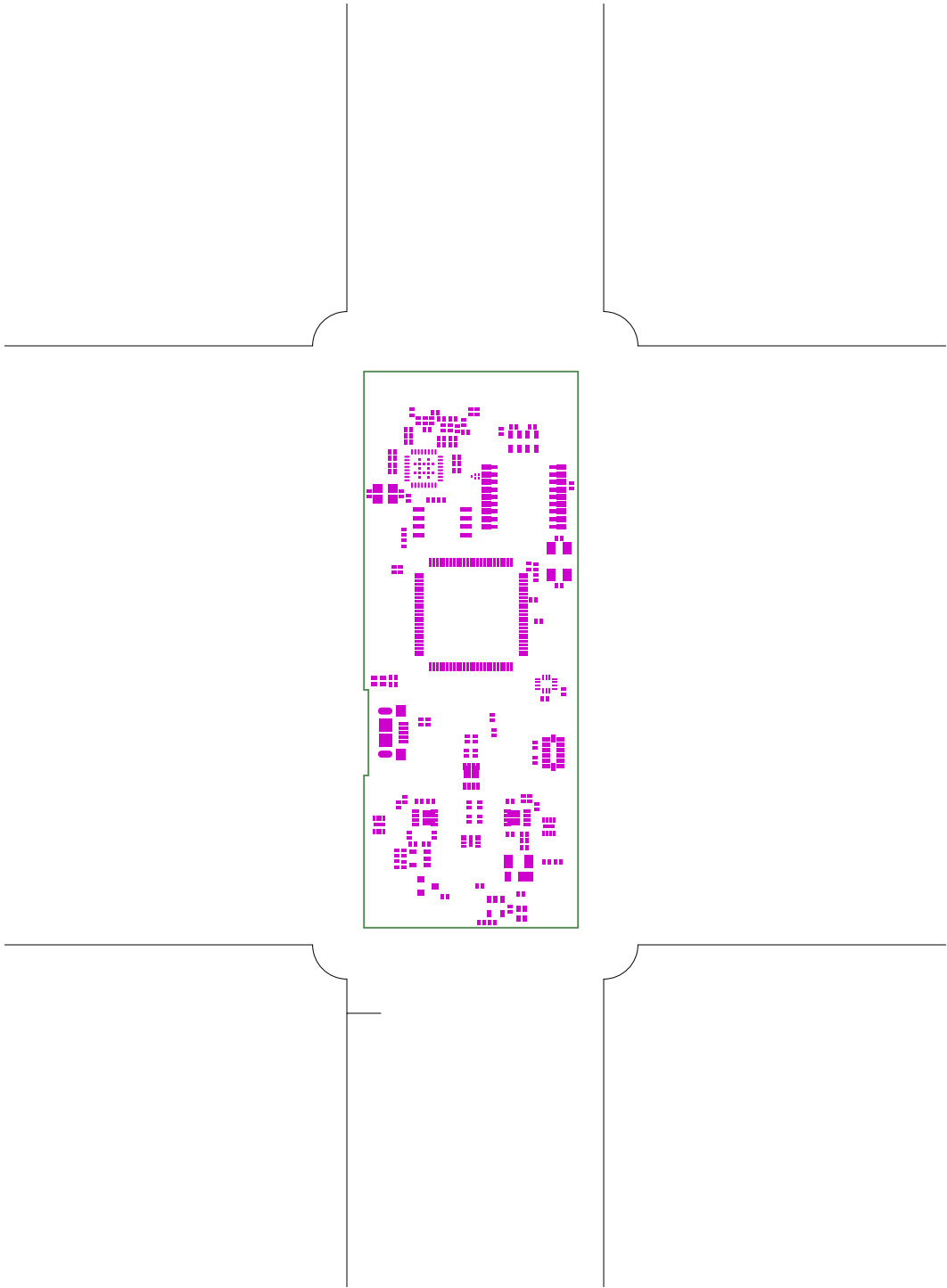


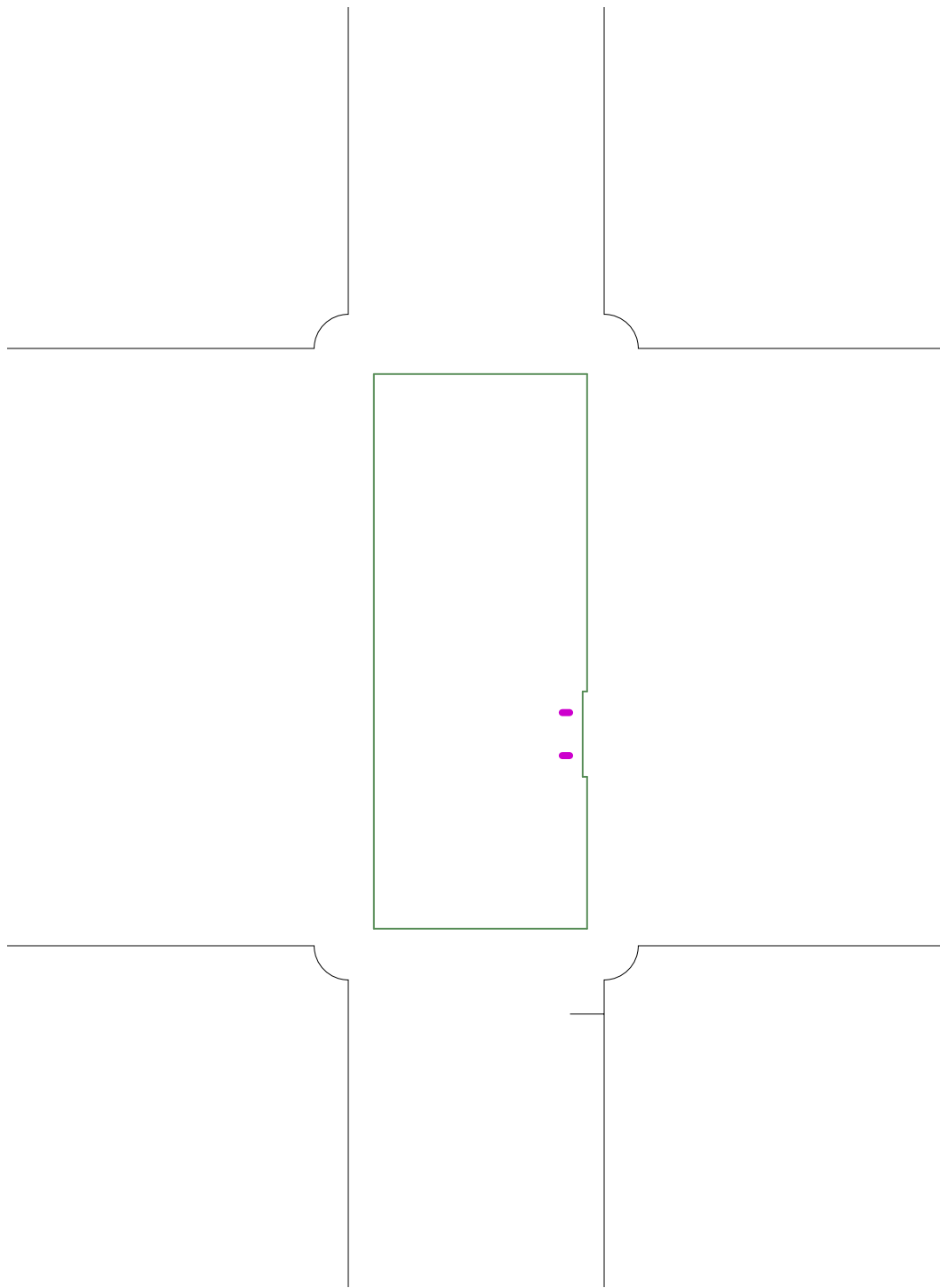


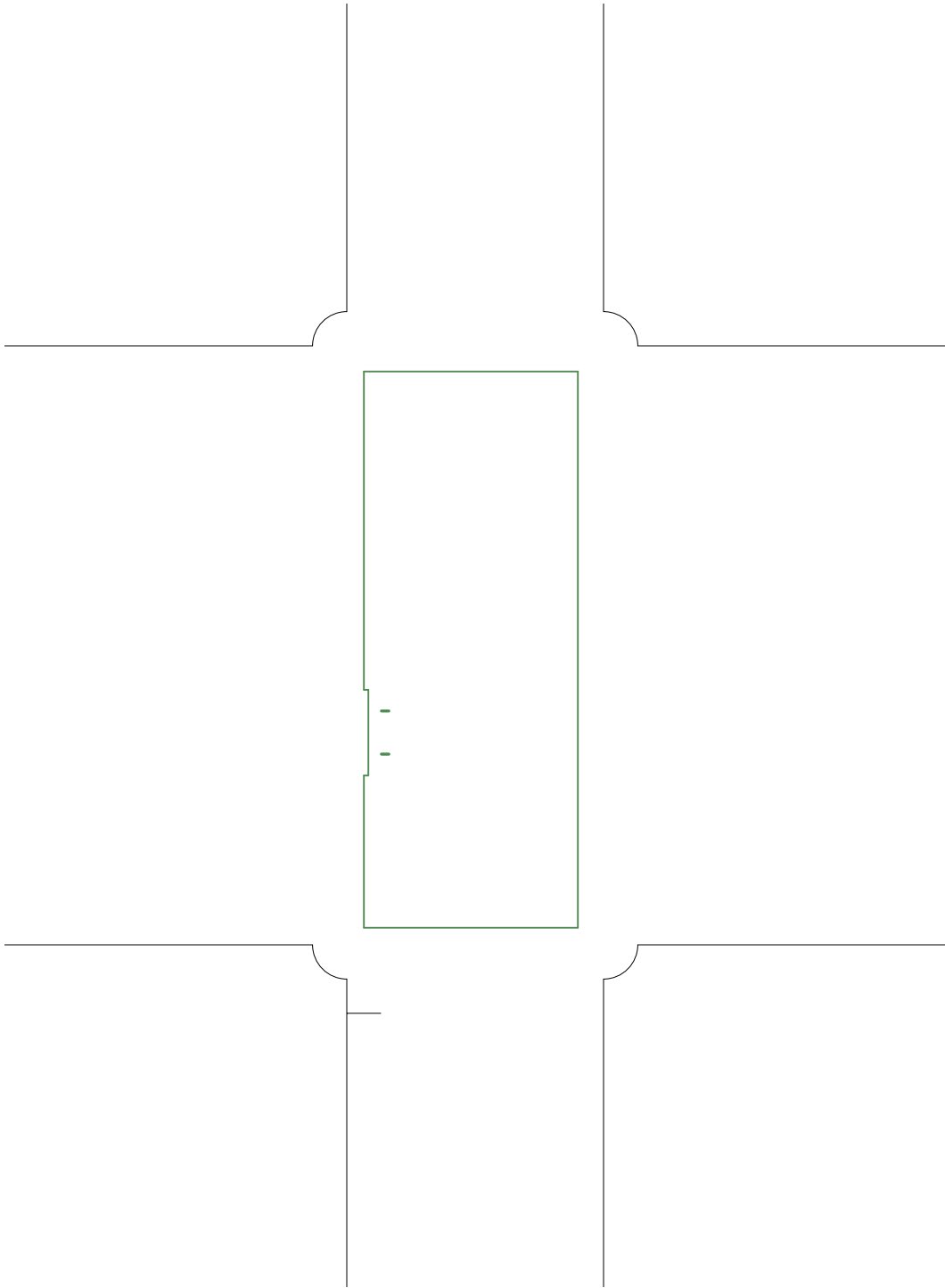


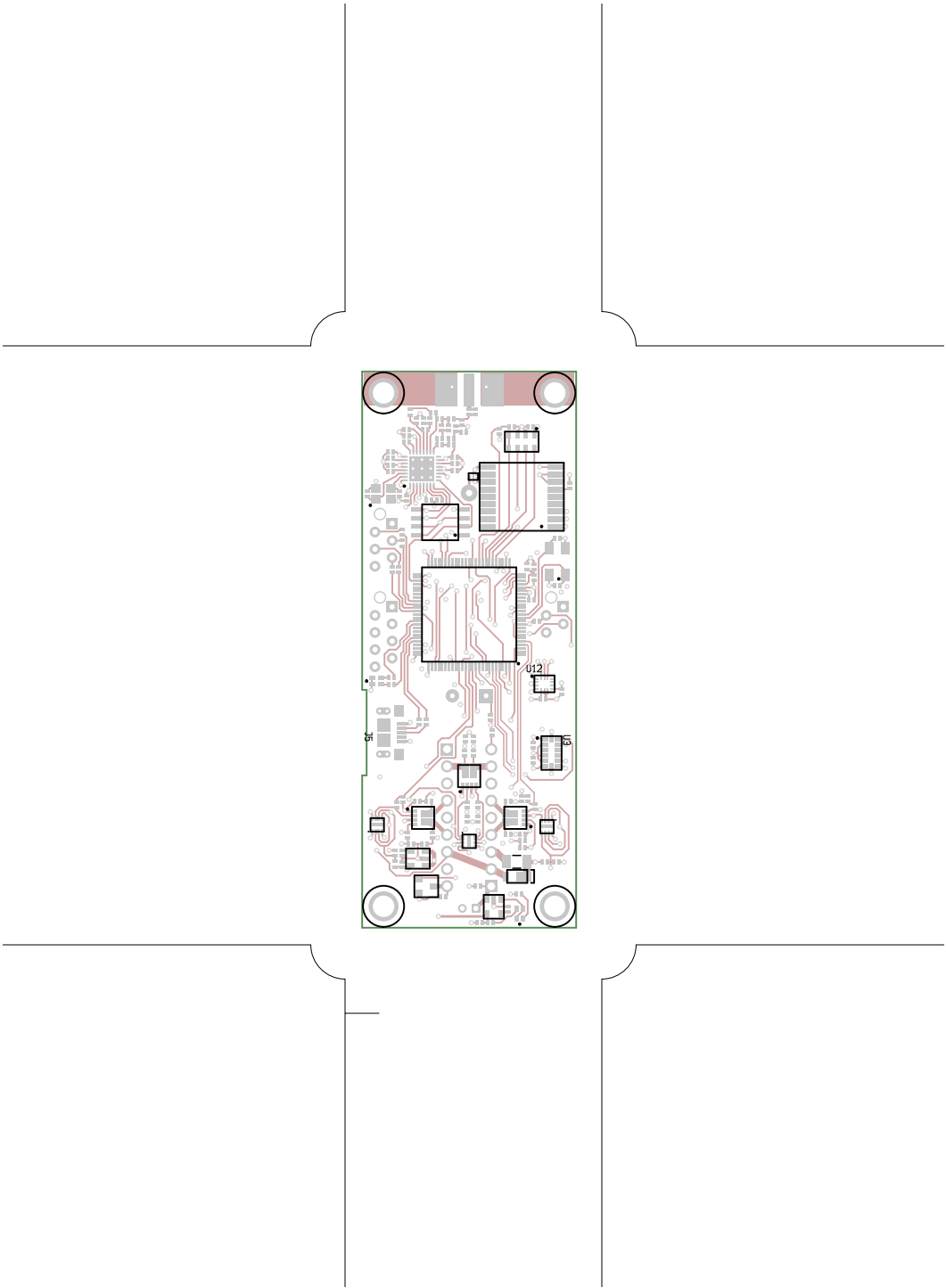


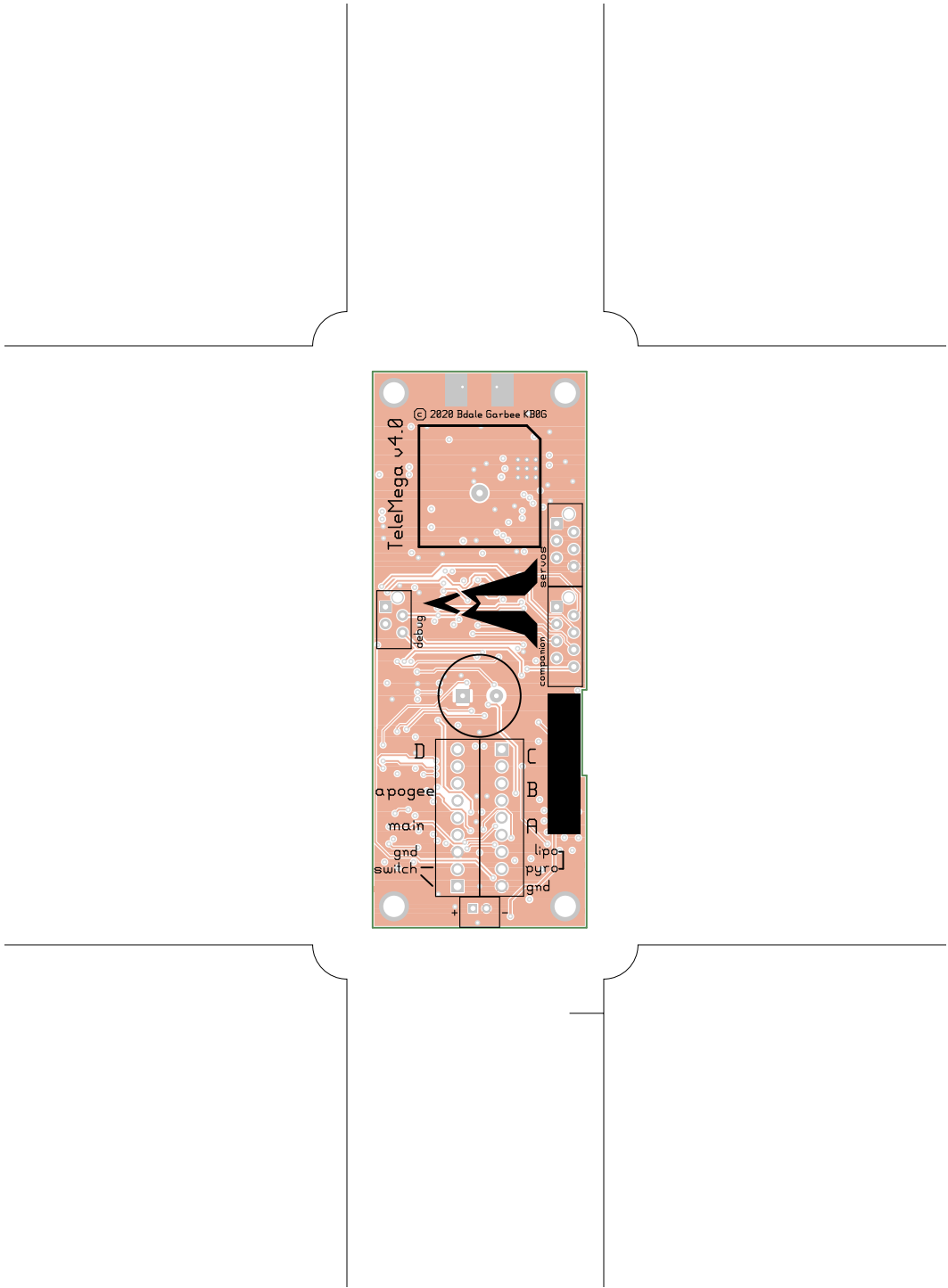










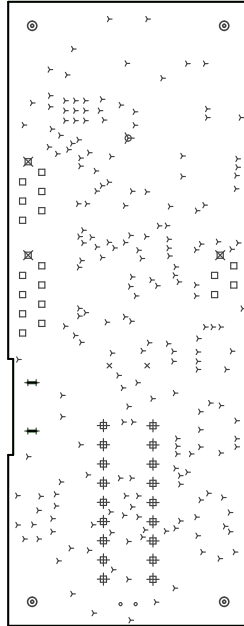


TeleMega, bottomassembly (mirrored), scale = 1:1.000
telemega.lht

There are 9 different drill sizes used in this layout, 252 holes total

Symbol	Diam. (Inch)	Count	Plated?
Y	0.015	200	YES
+	0.018	4	YES
x	0.028	2	YES
o	0.030	2	YES
□	0.032	18	YES
▽	0.037	1	YES
⊕	0.045	18	YES
⊗	0.059	3	YES
⊙	0.125	4	YES

Title: TeleMega - Fabrication Drawing
 Author: Bdale Garbee
 Date: 2021-09-01 18:40:58 UTC



Board outline is the centerline of this path