

1. Table of Contents (This Page)
Created on Tue Mar 5 20:26:00 2013

2. top

3. bottom

4. outline

5. plated-drill

6. componentmask

7. soldermask

8. topsilk

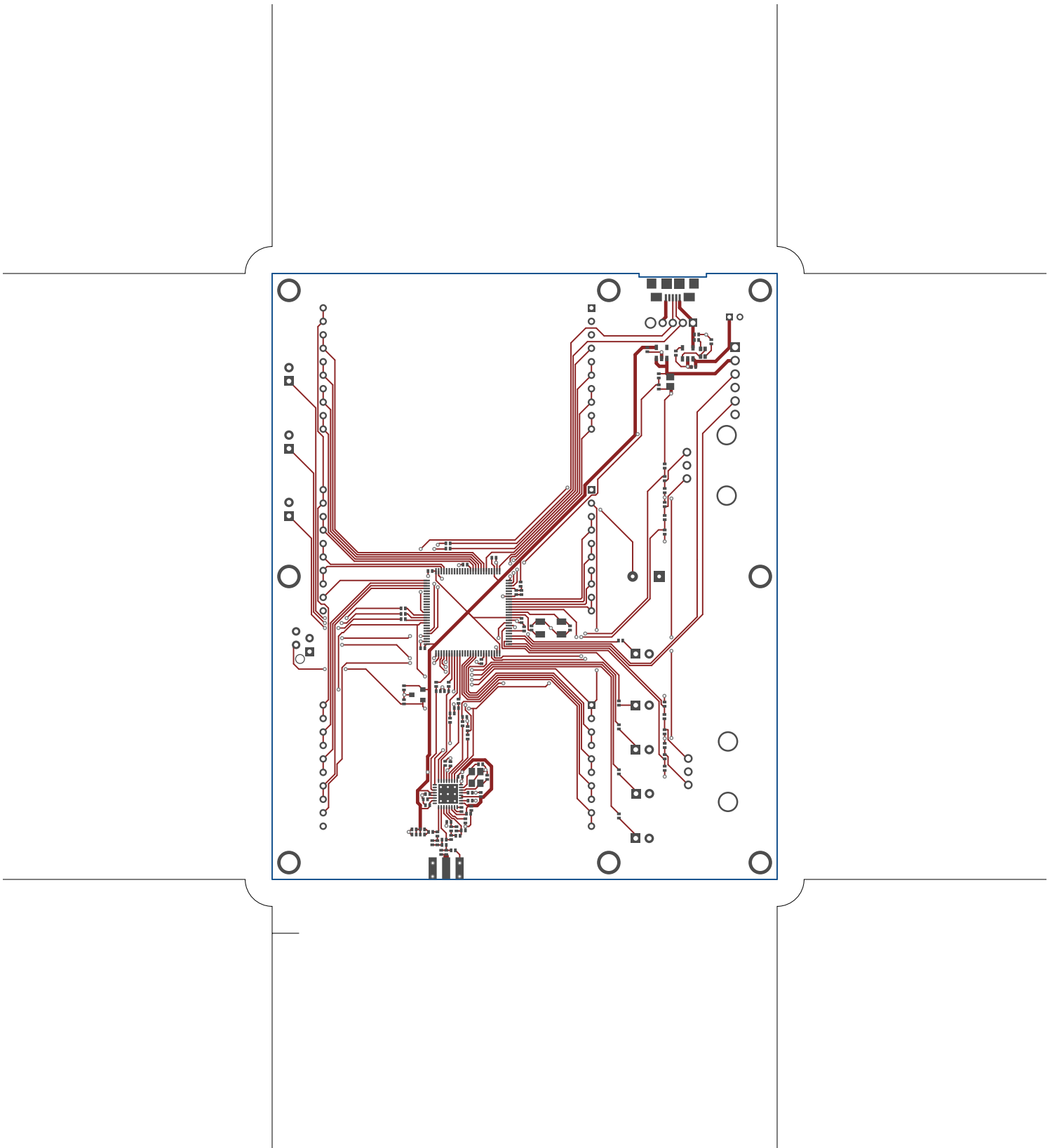
9. bottomsilk

10. toppaste

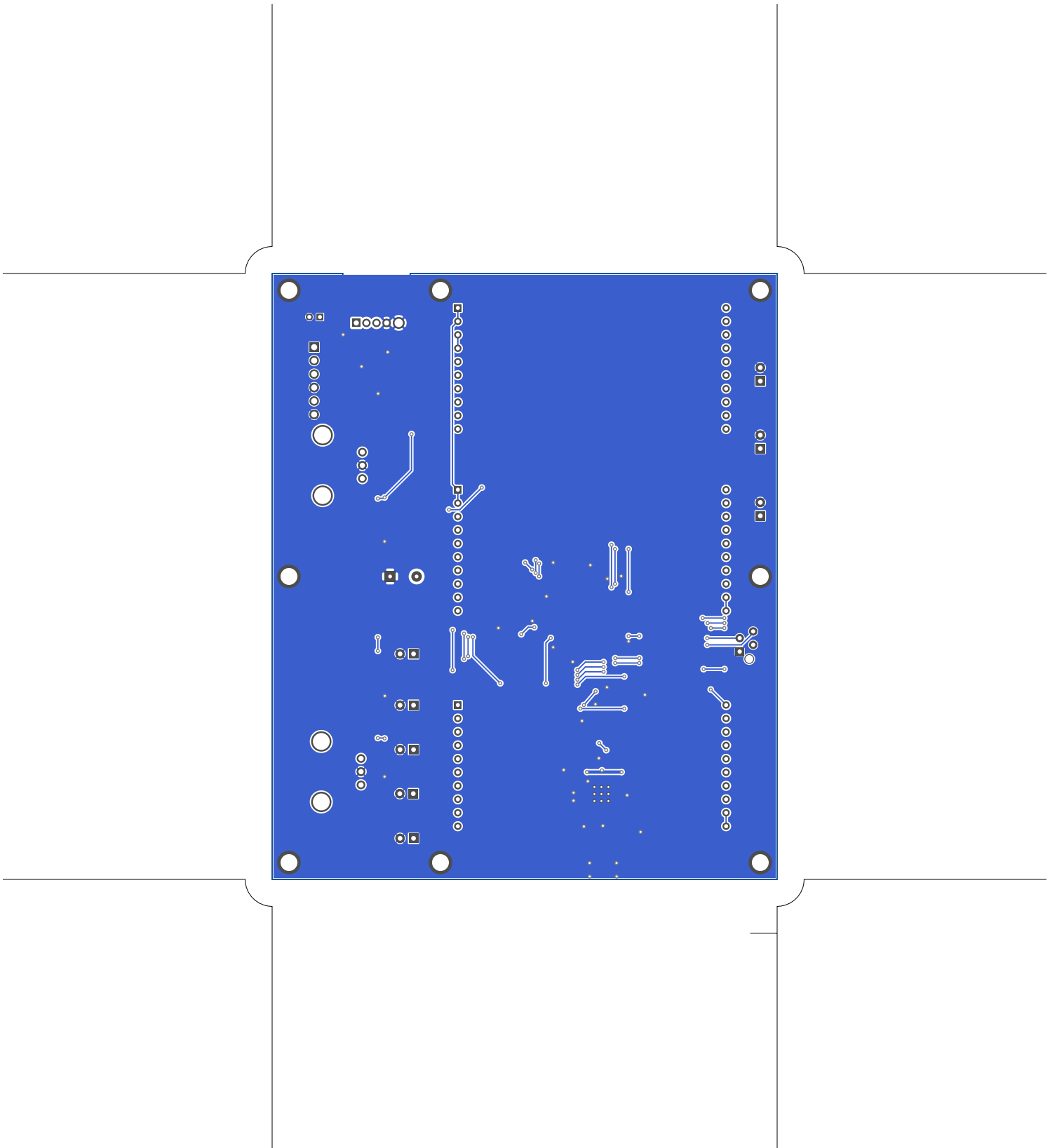
11. topassembly

12. bottomassembly

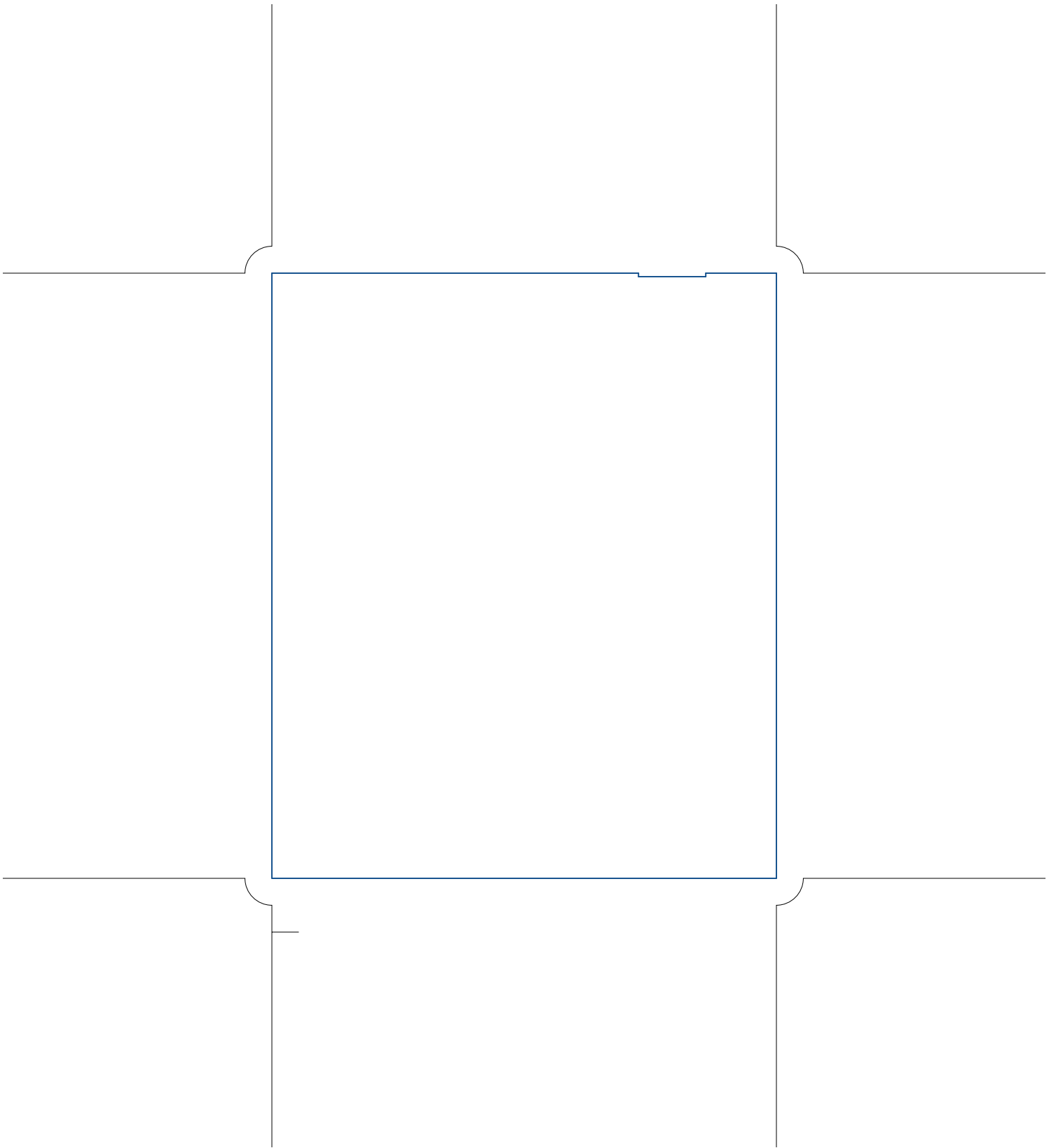
13. fab

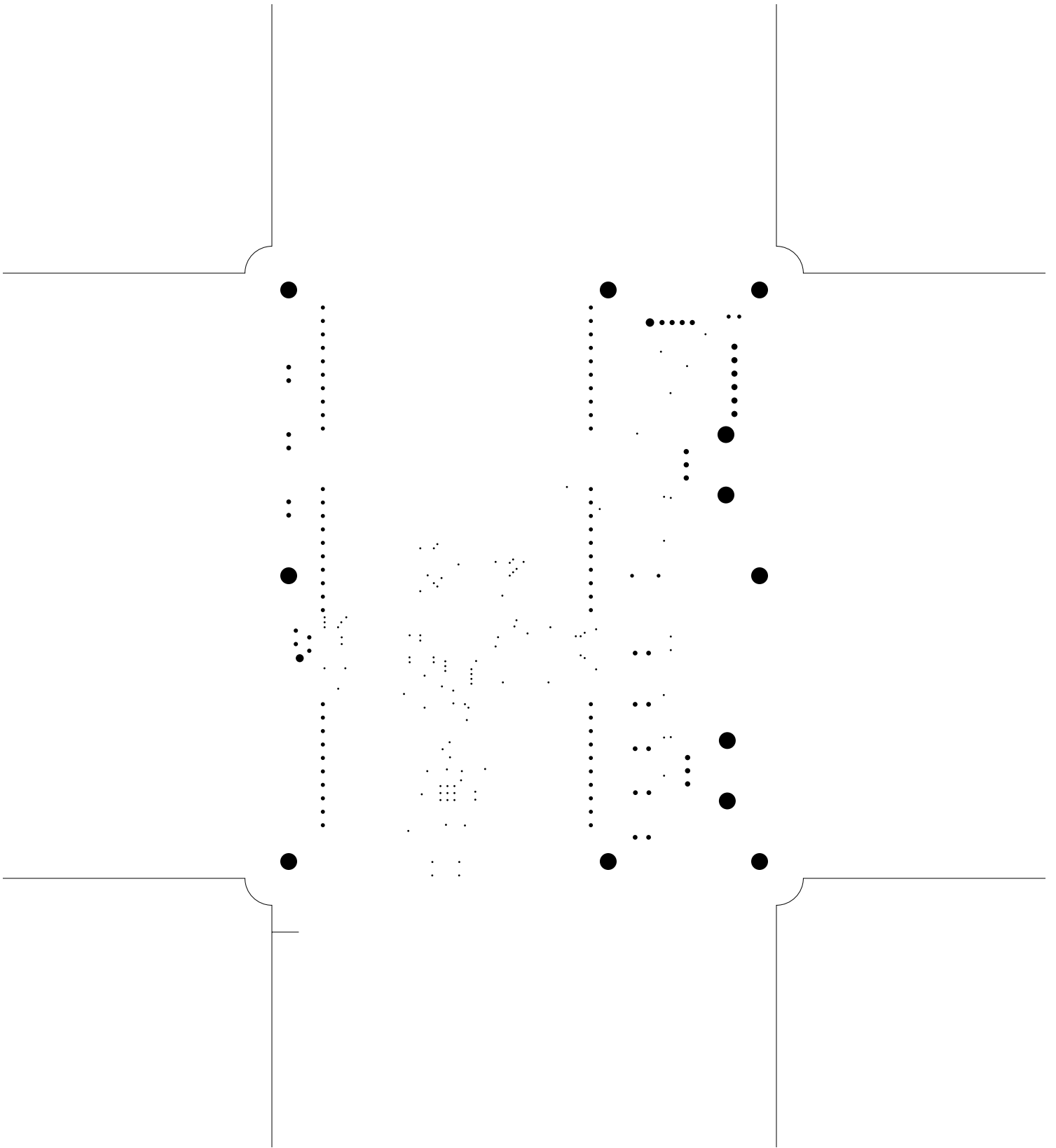


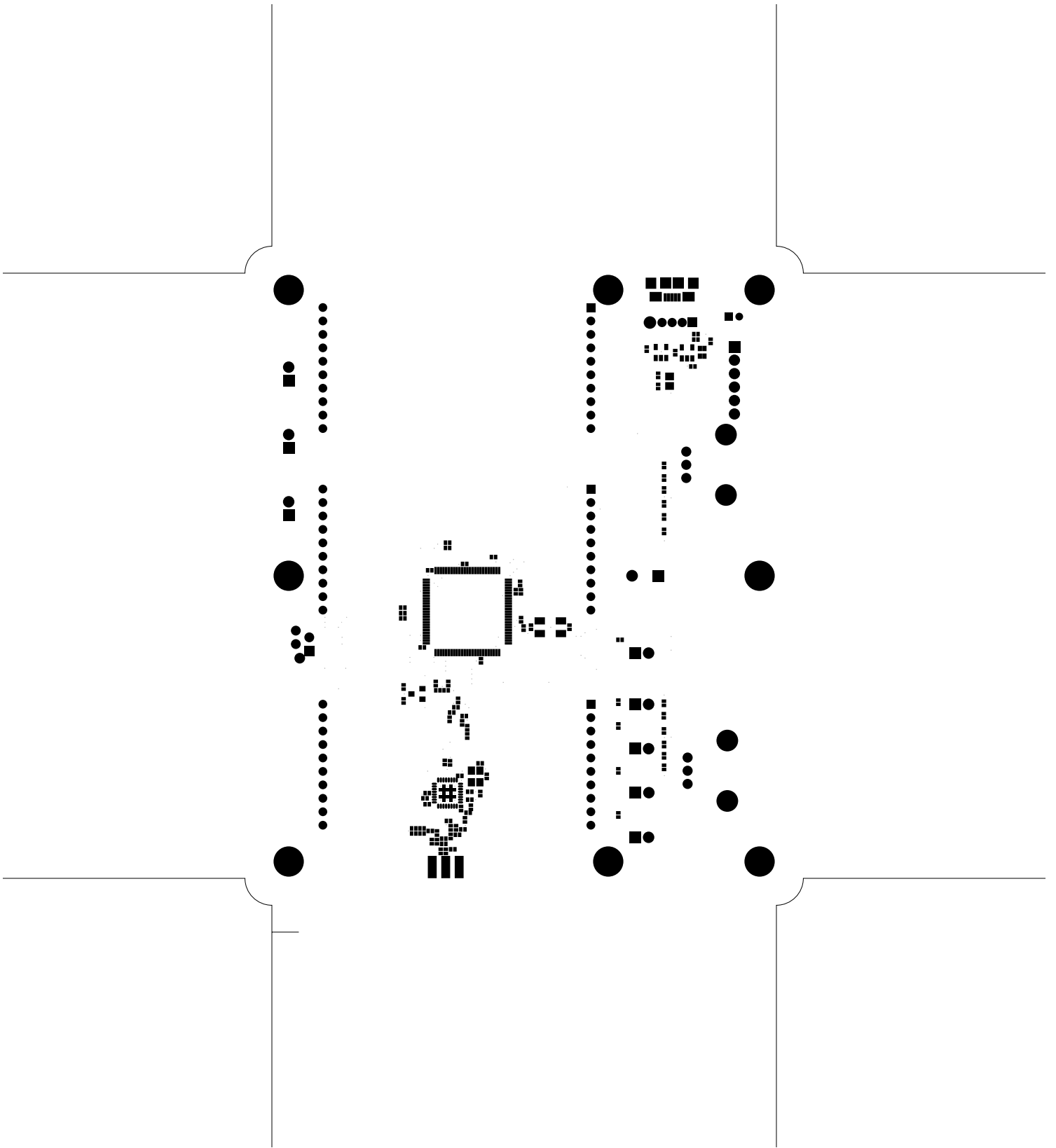
TeleLco, top, scale = 1:1.000
telco.pcb

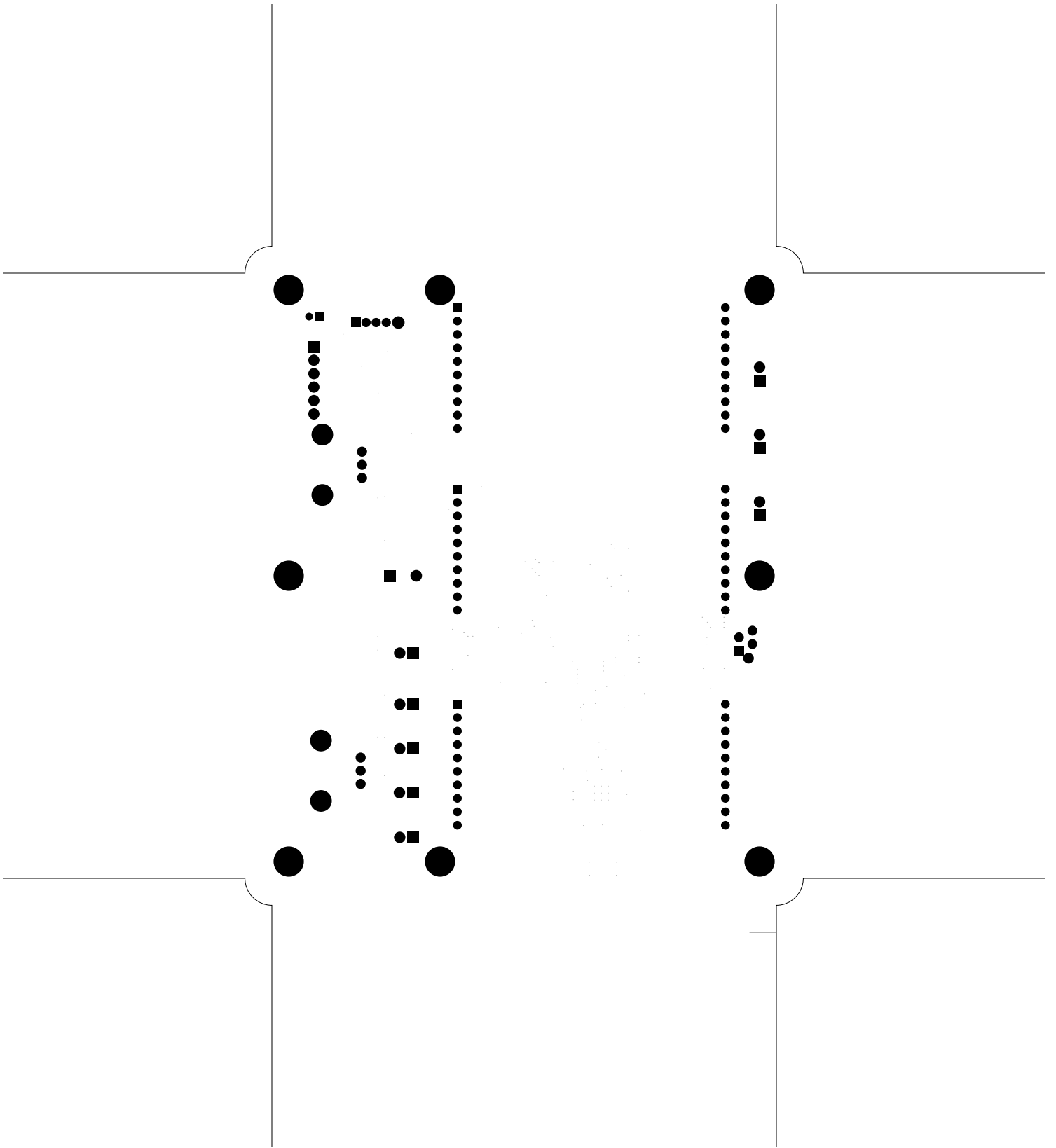


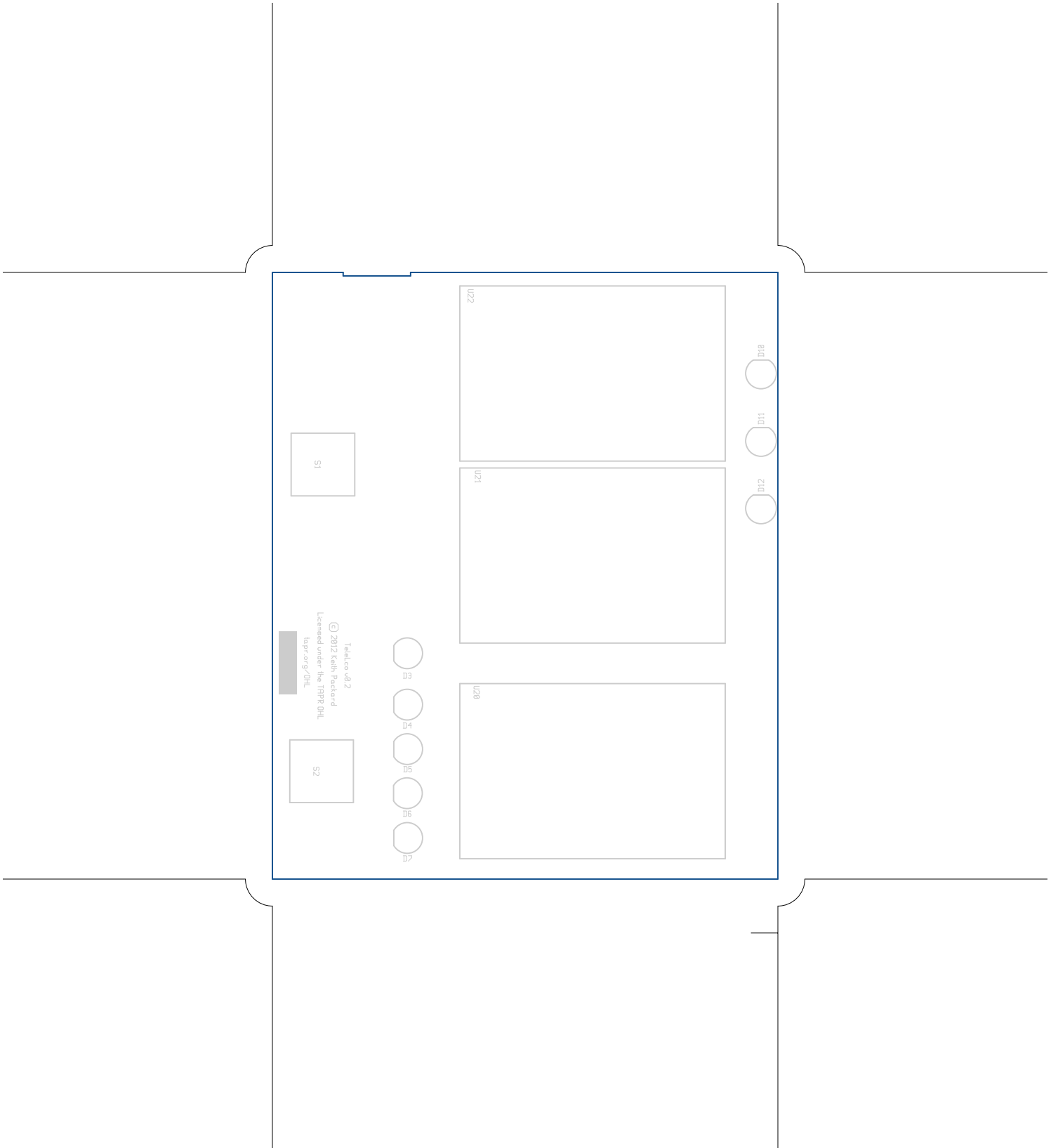
TeleLco, bottom (mirrored), scale = 1:1.000
telco.pcb

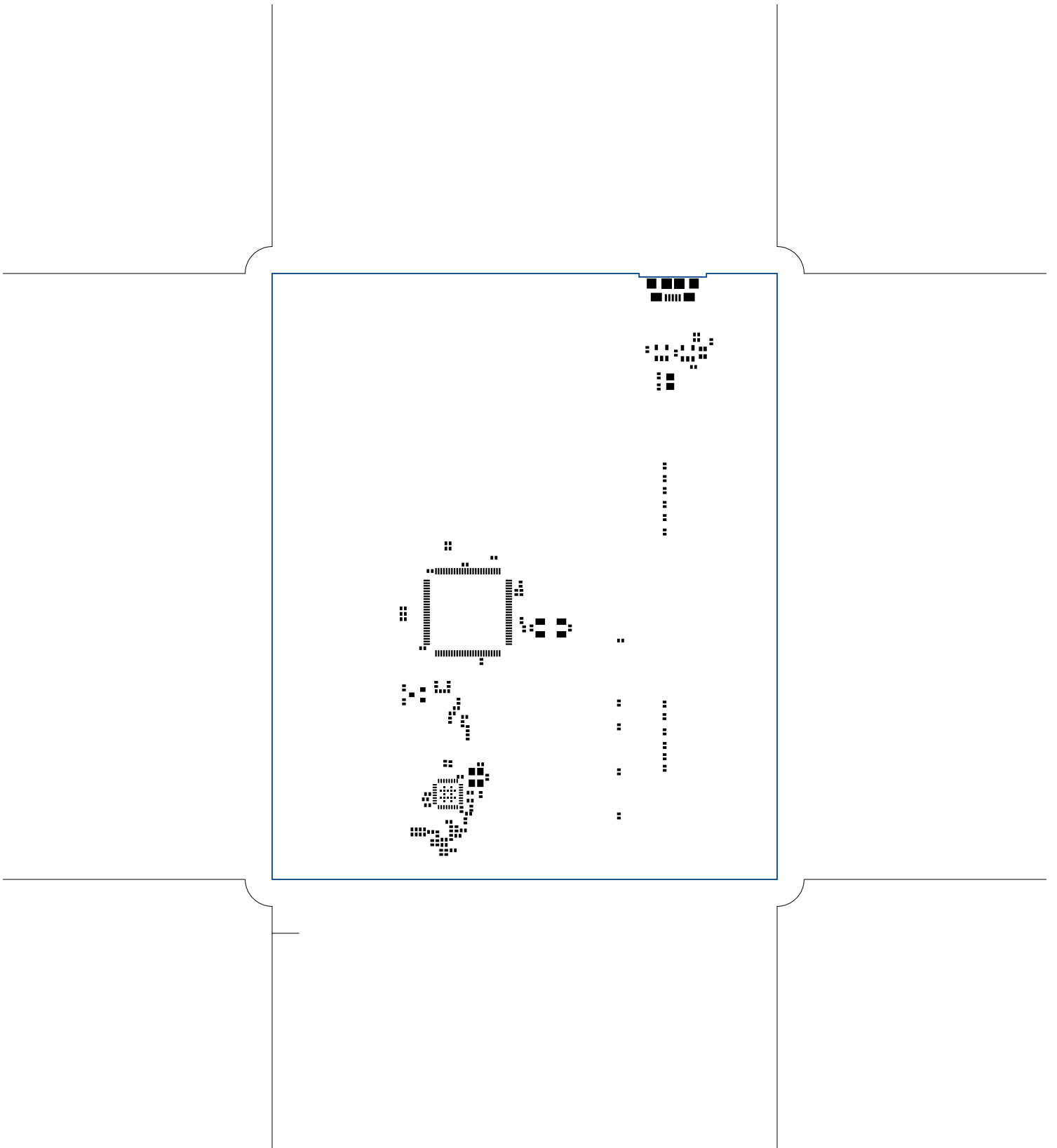


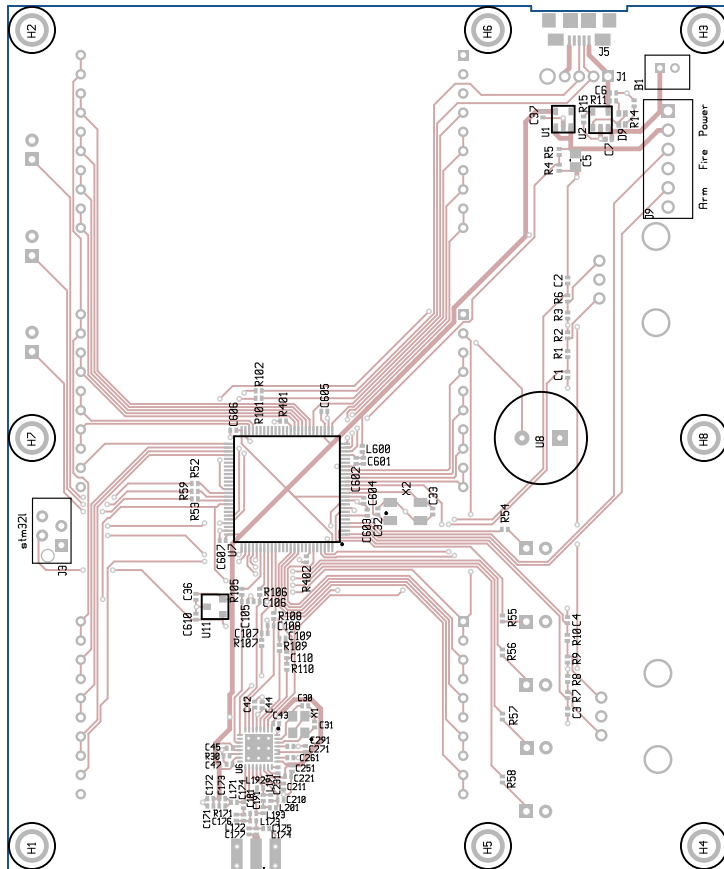


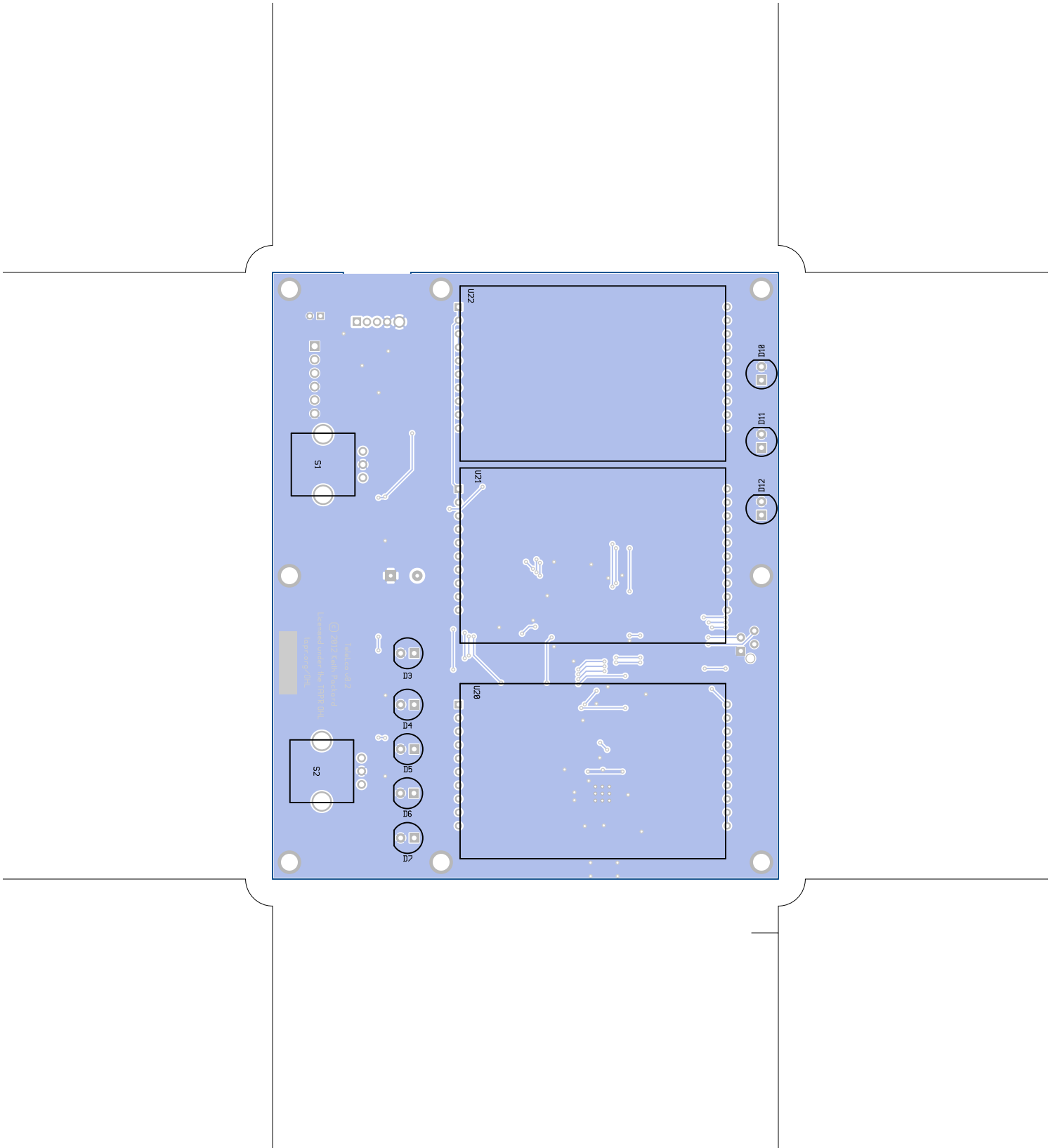










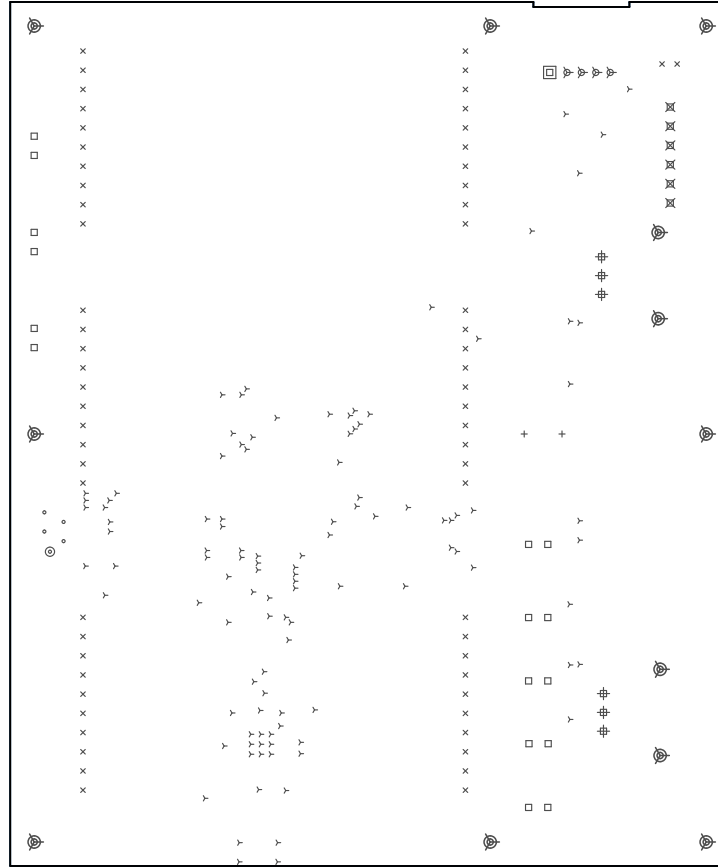


TeleLco, bottomassembly (mirrored), scale = 1:1.000
telco.pcb

There are 11 different drill sizes used in this layout, 224 holes total

Symbol	Diam. (Inch)	Count	Plated?
Y	0.015	110	YES
+	0.028	2	YES
x	0.030	62	YES
o	0.032	4	YES
□	0.035	16	YES
∅	0.038	4	YES
#	0.039	6	YES
⊗	0.045	6	YES
⊙	0.059	1	YES
⊠	0.063	1	YES
⊚	0.125	12	YES

Title: TeleLco - Fabrication Drawing
 Author: Keith Packard
 Date: Wed 06 Mar 2013 04:26:00 AM GMT UTC



Board outline is the centerline of this path