

1. Table of Contents (This Page)  
Created on Tue Dec 21 10:23:40 2010

2. top

3. bottom

4. outline

5. plated-drill

6. componentmask

7. soldermask

8. topsilk

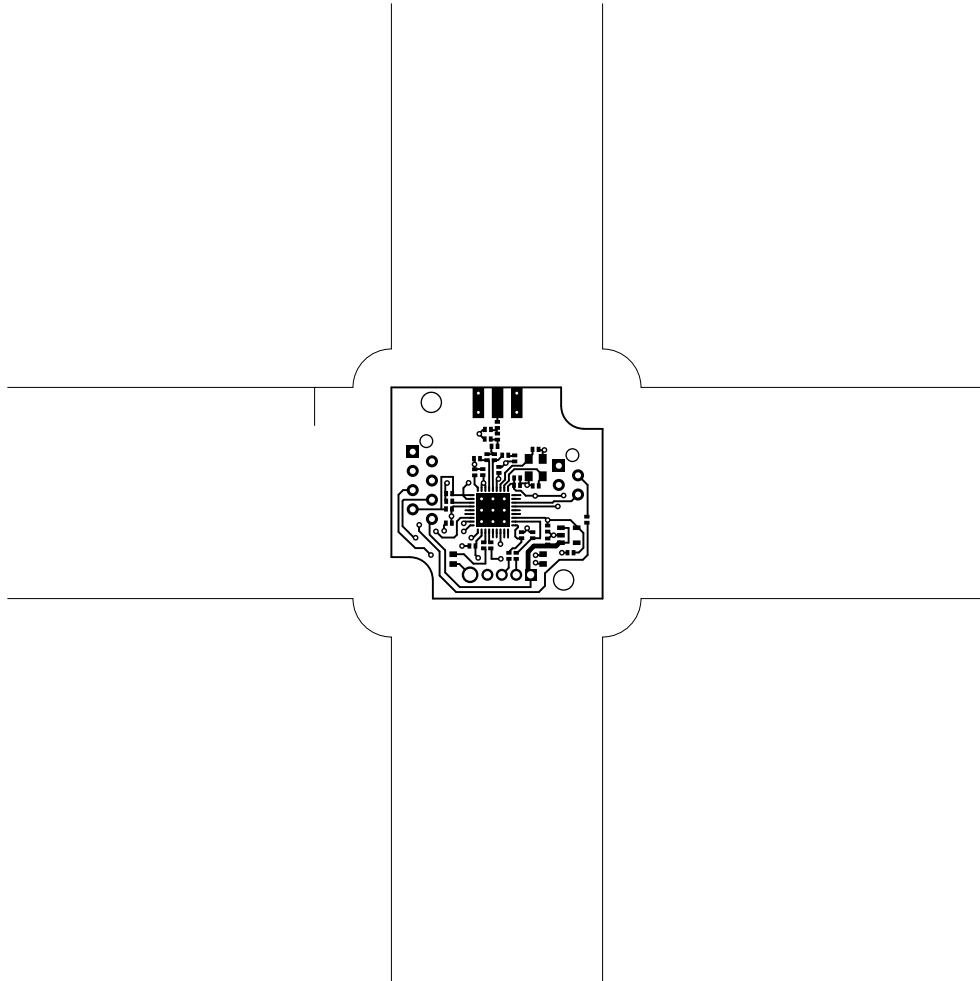
9. bottomsilk

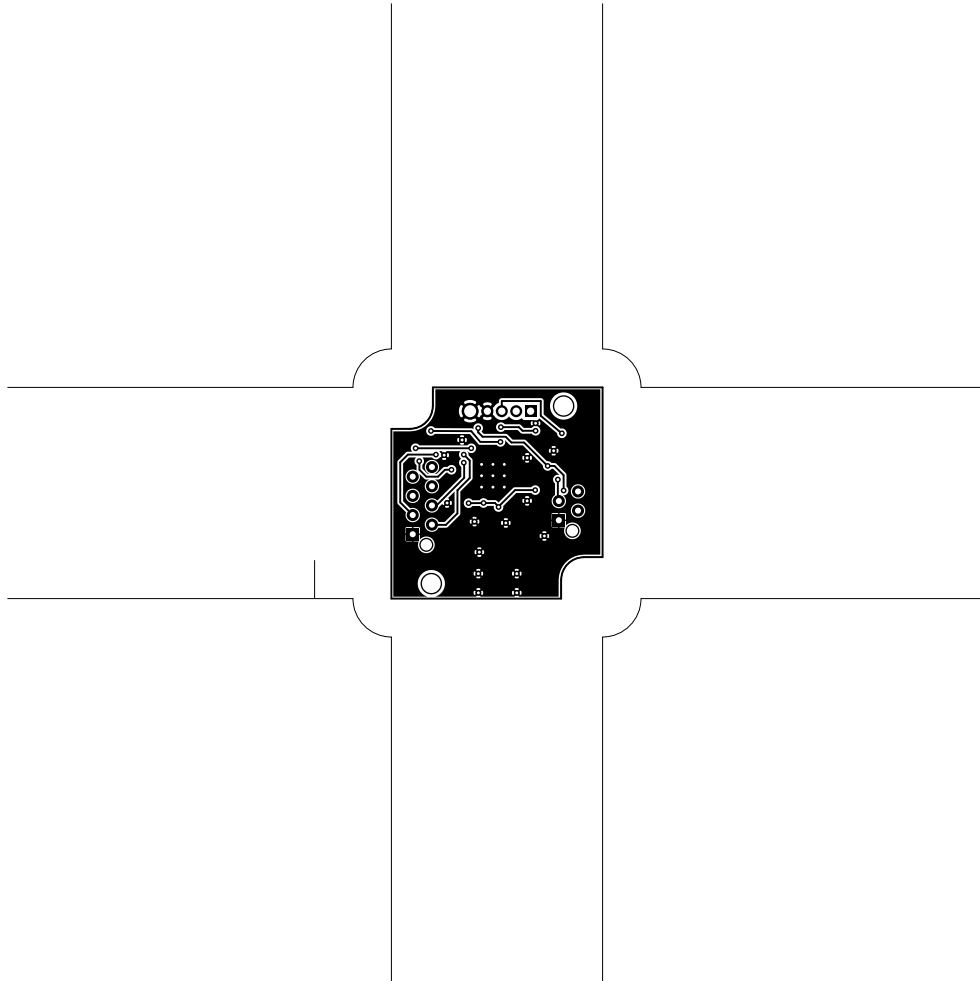
10. toppaste

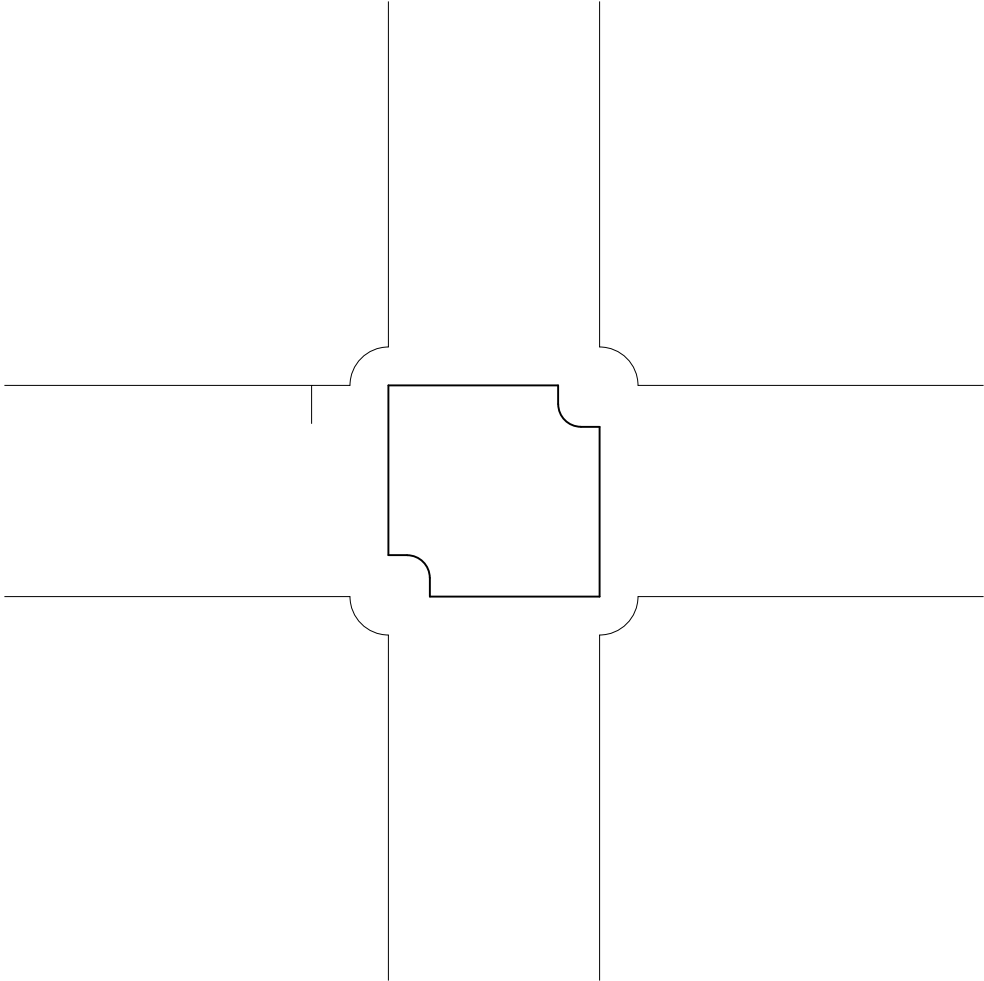
11. topassembly

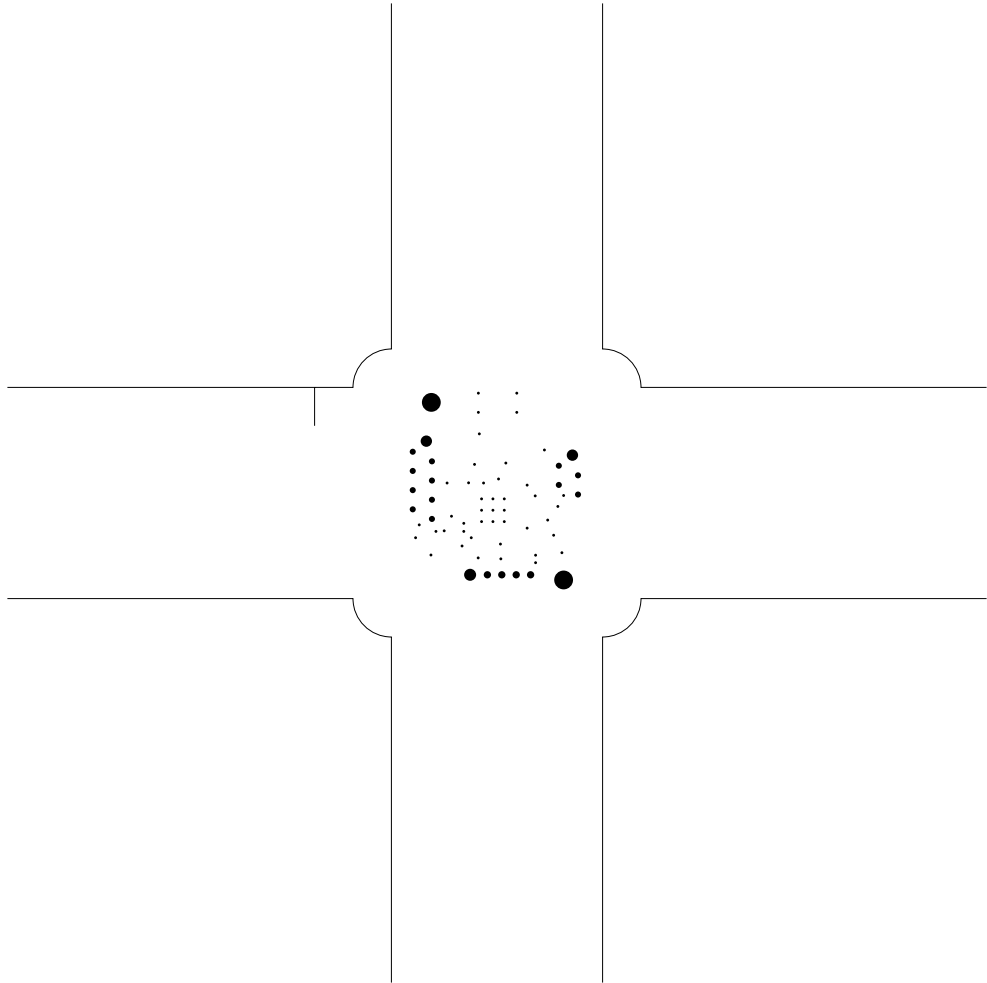
12. bottomassembly

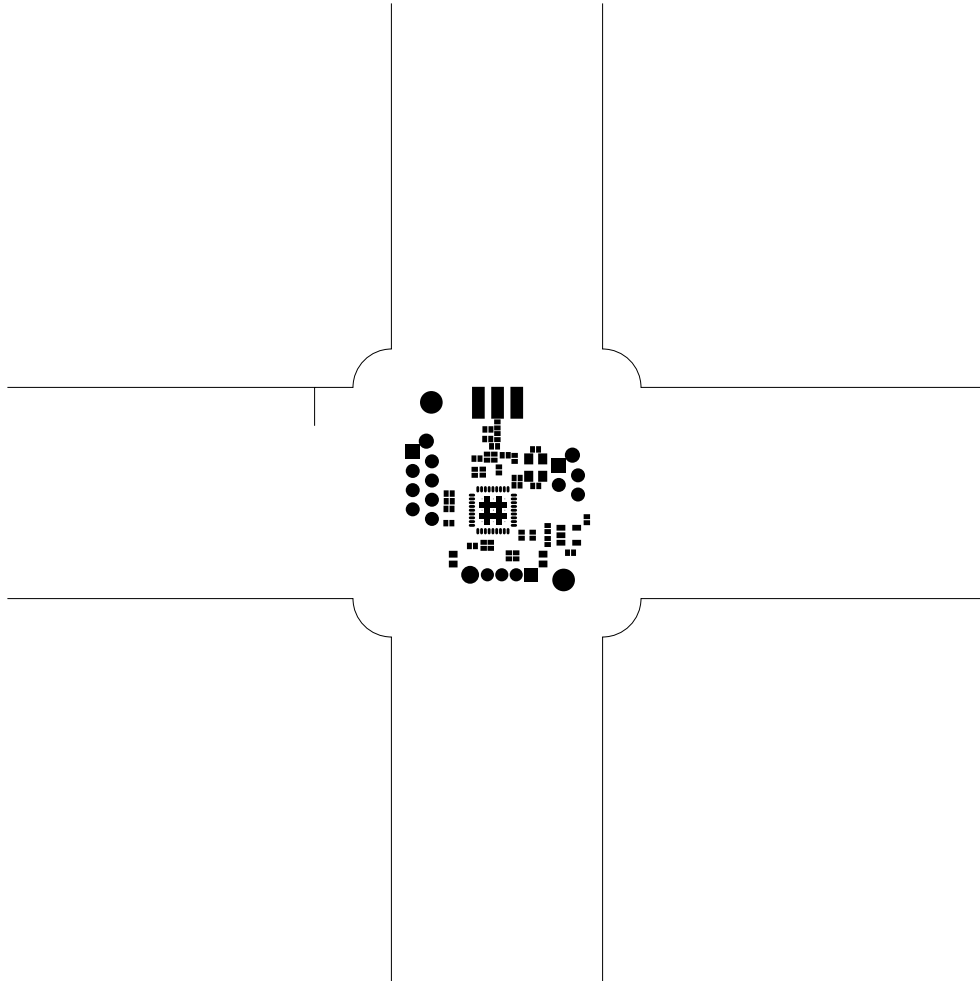
13. fab

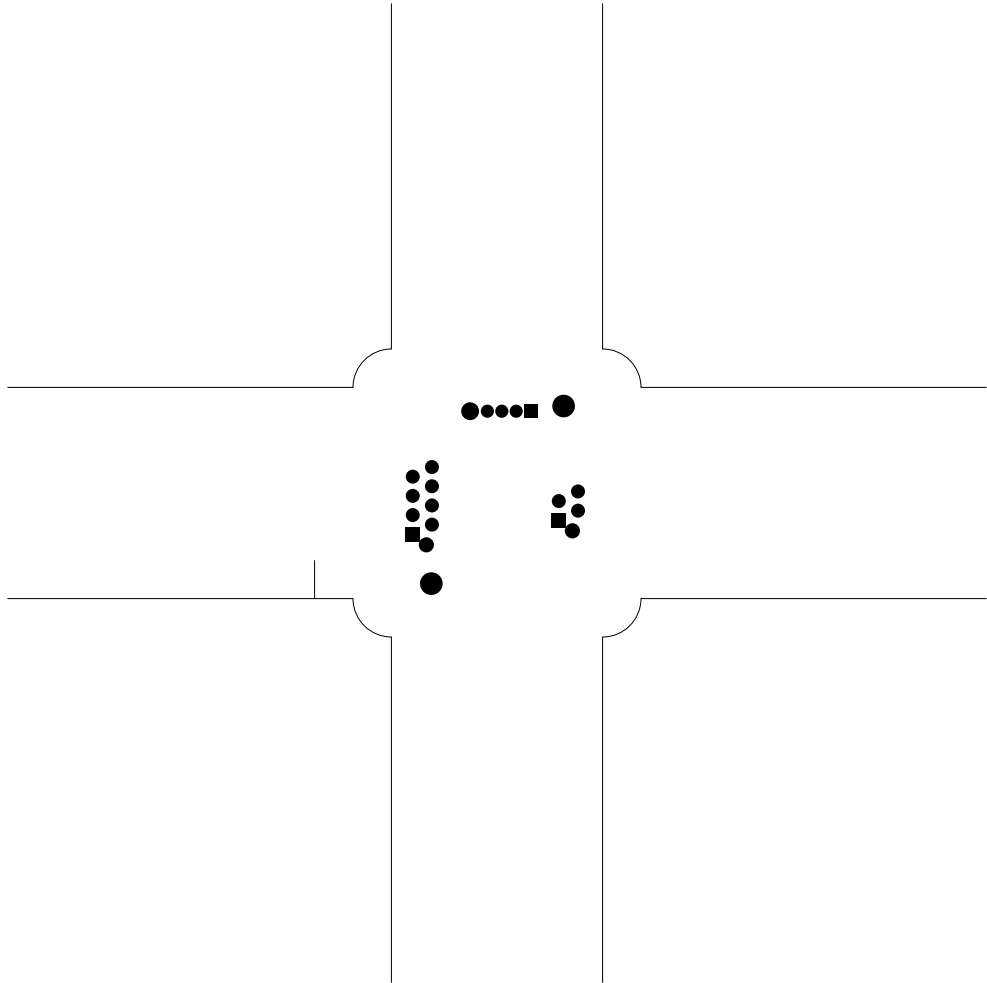


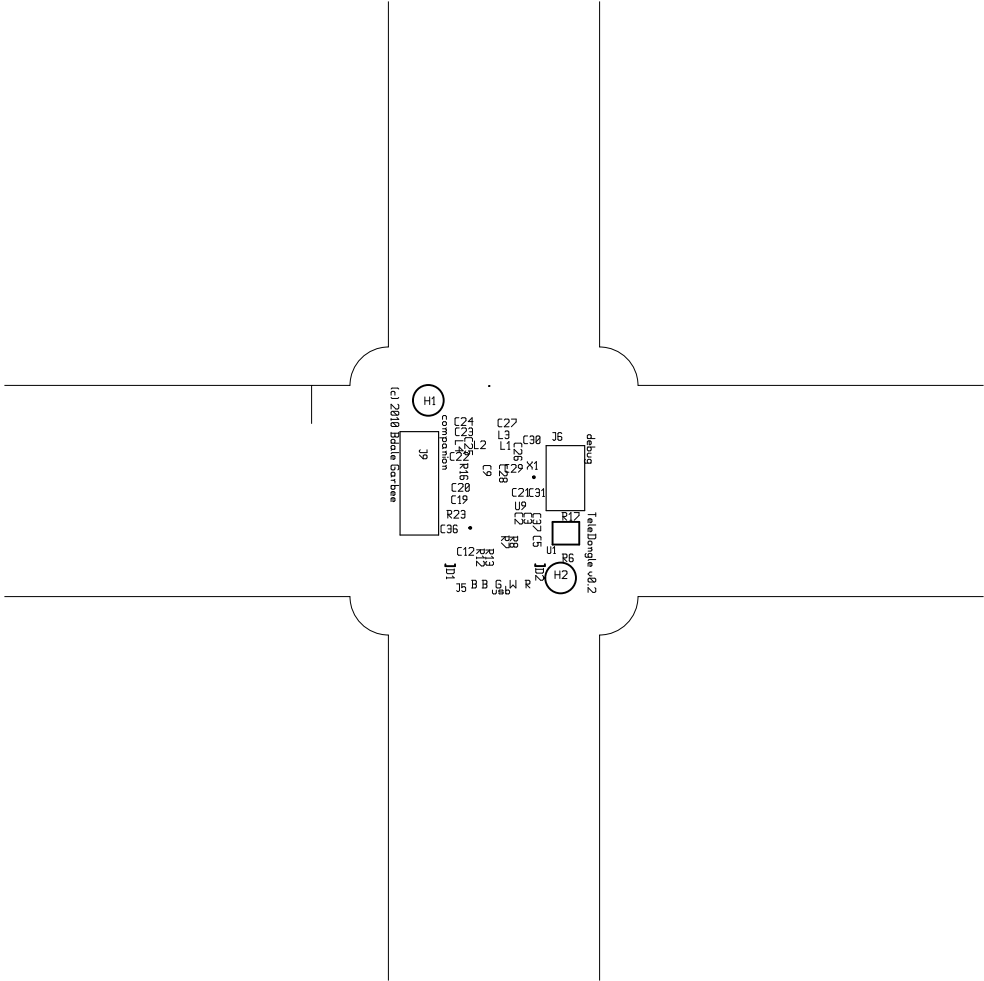




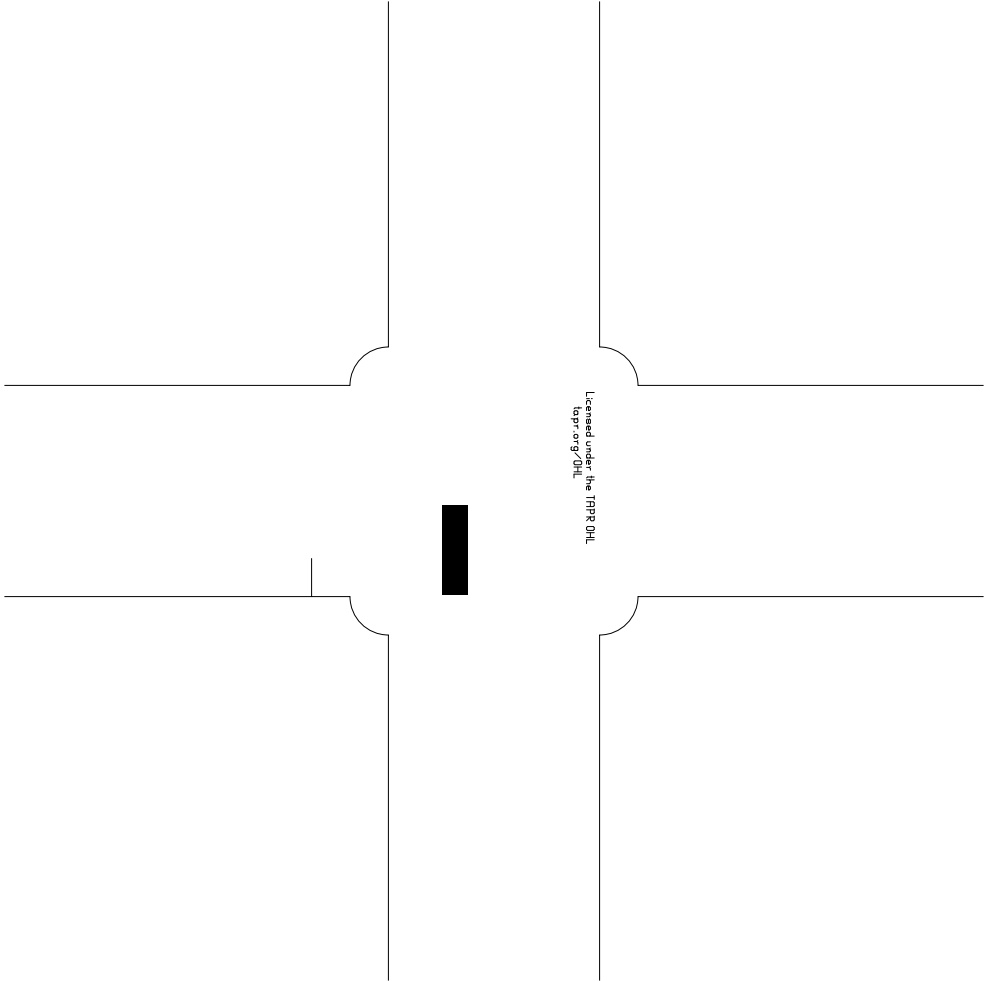


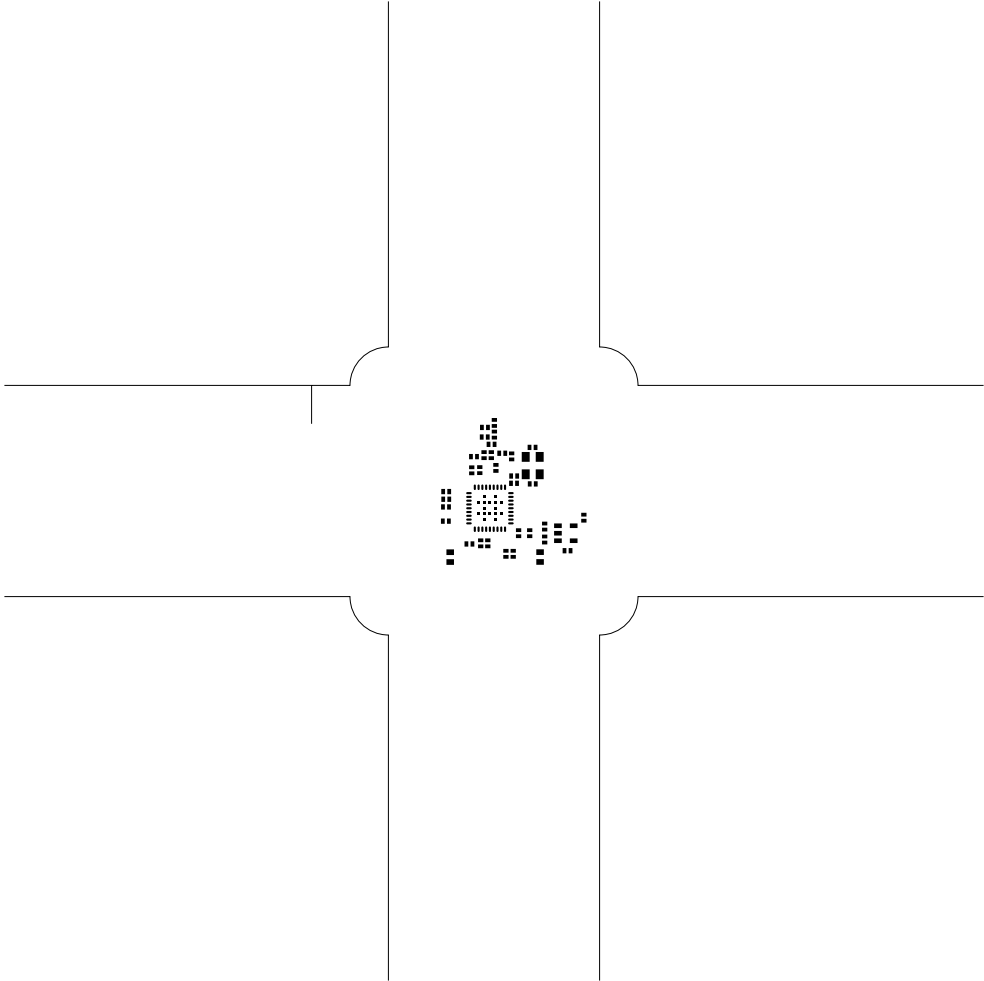




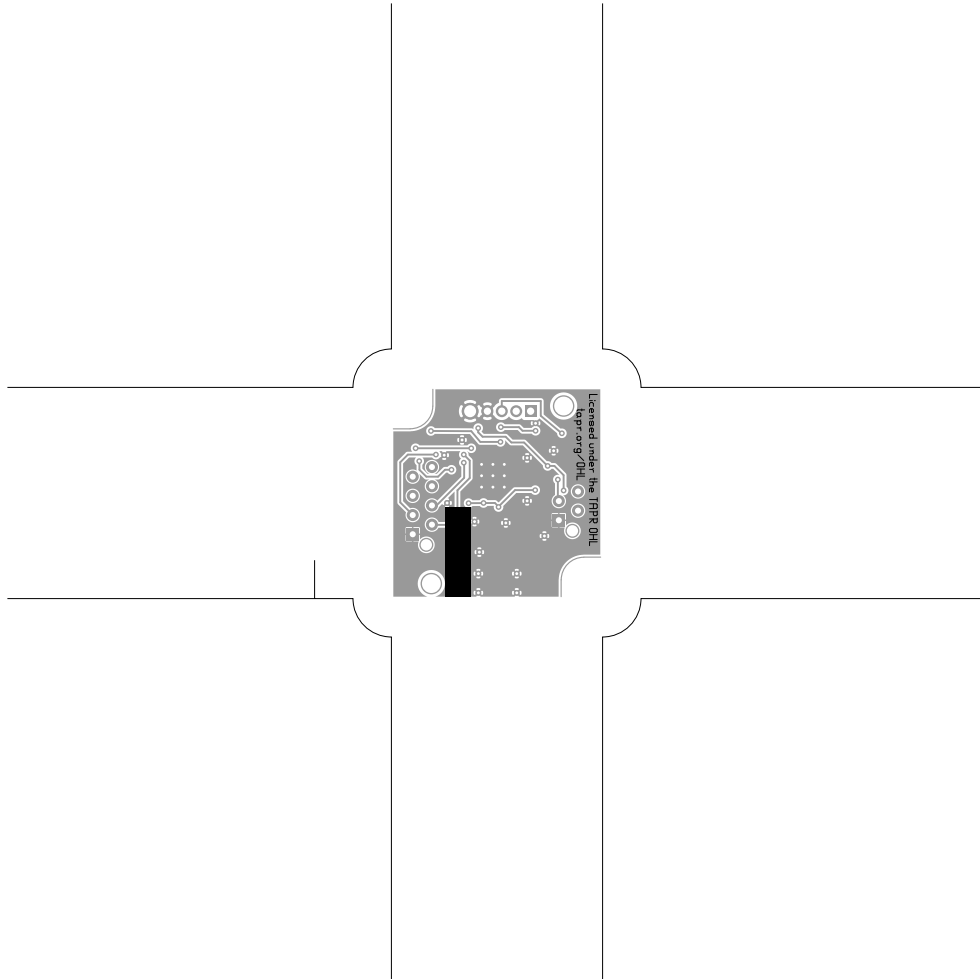












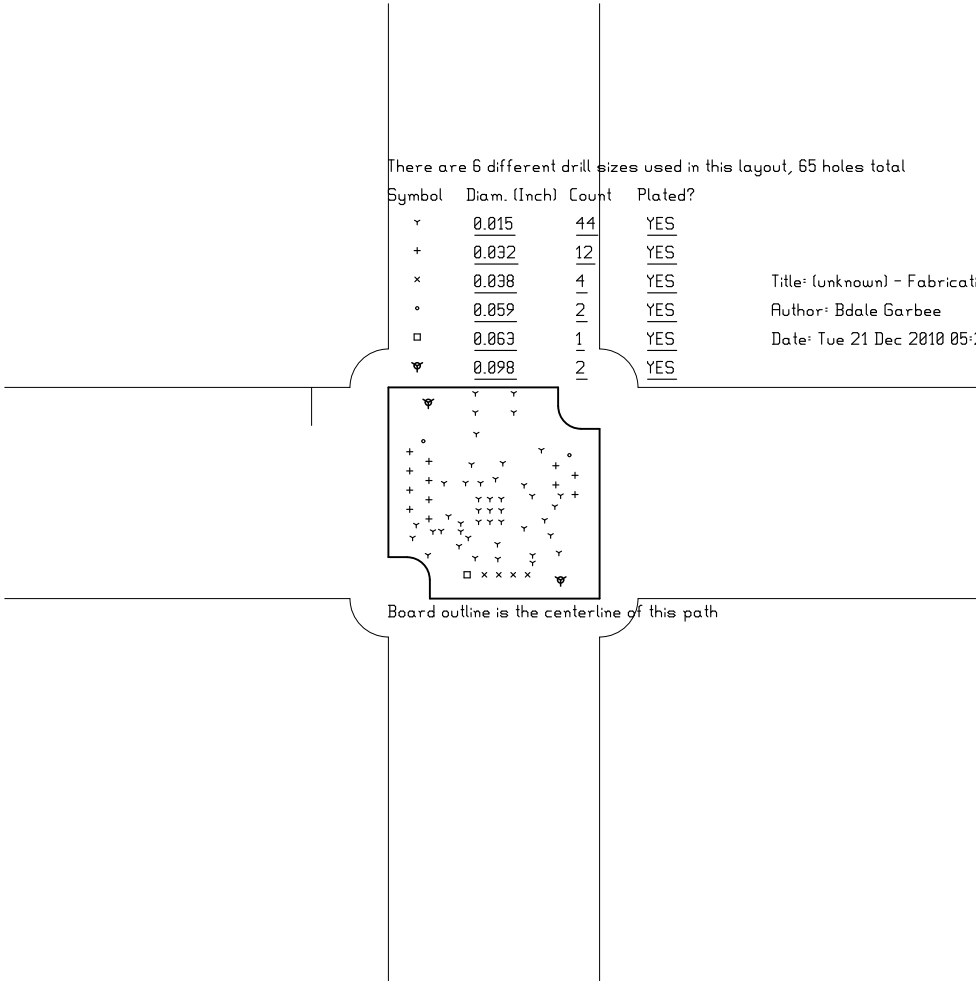
There are 6 different drill sizes used in this layout, 65 holes total

Symbol	Diam. (Inch)	Count	Plated?
Y	0.015	44	YES
+	0.032	12	YES
x	0.038	4	YES
o	0.059	2	YES
□	0.059	1	YES
▽	0.098	2	YES

Title: (unknown) - Fabrication Drawing

Author: Bdale Garbee

Date: Tue 21 Dec 2010 05:23:40 PM GMT UTC



Board outline is the centerline of this path