

1. Table of Contents (This Page)
Created on Sat Nov 5 22:21:58 2022

2. topsilk

3. top

4. bottom

5. topmask

6. bottommask

7. bottomsilk

8. toppaste

9. bottompaste

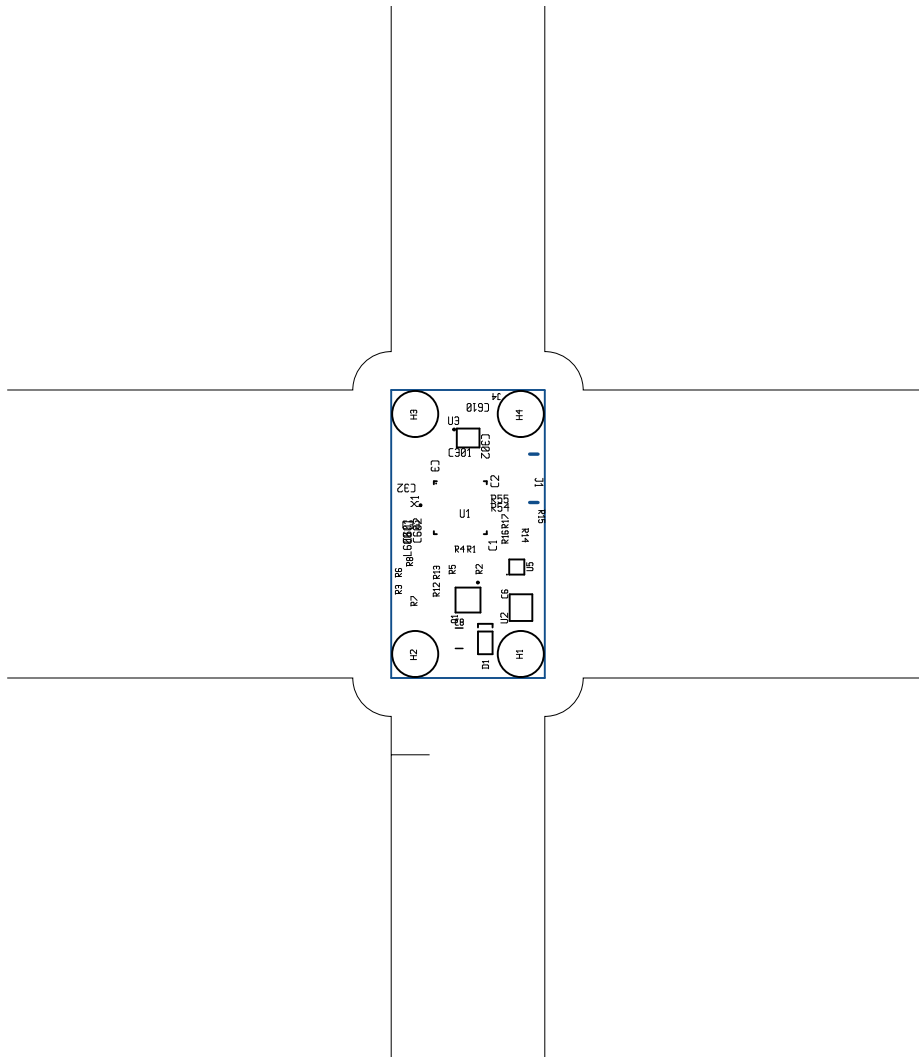
10. plated-drill

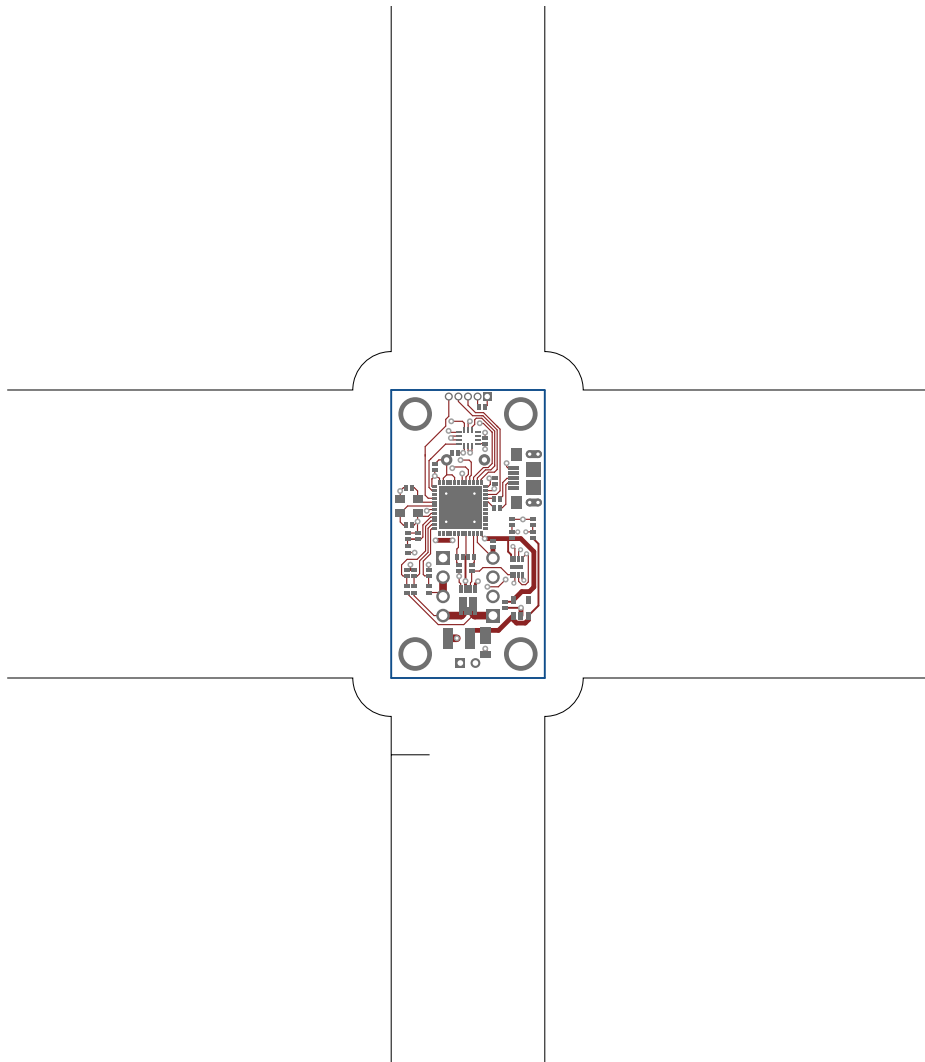
11. outline

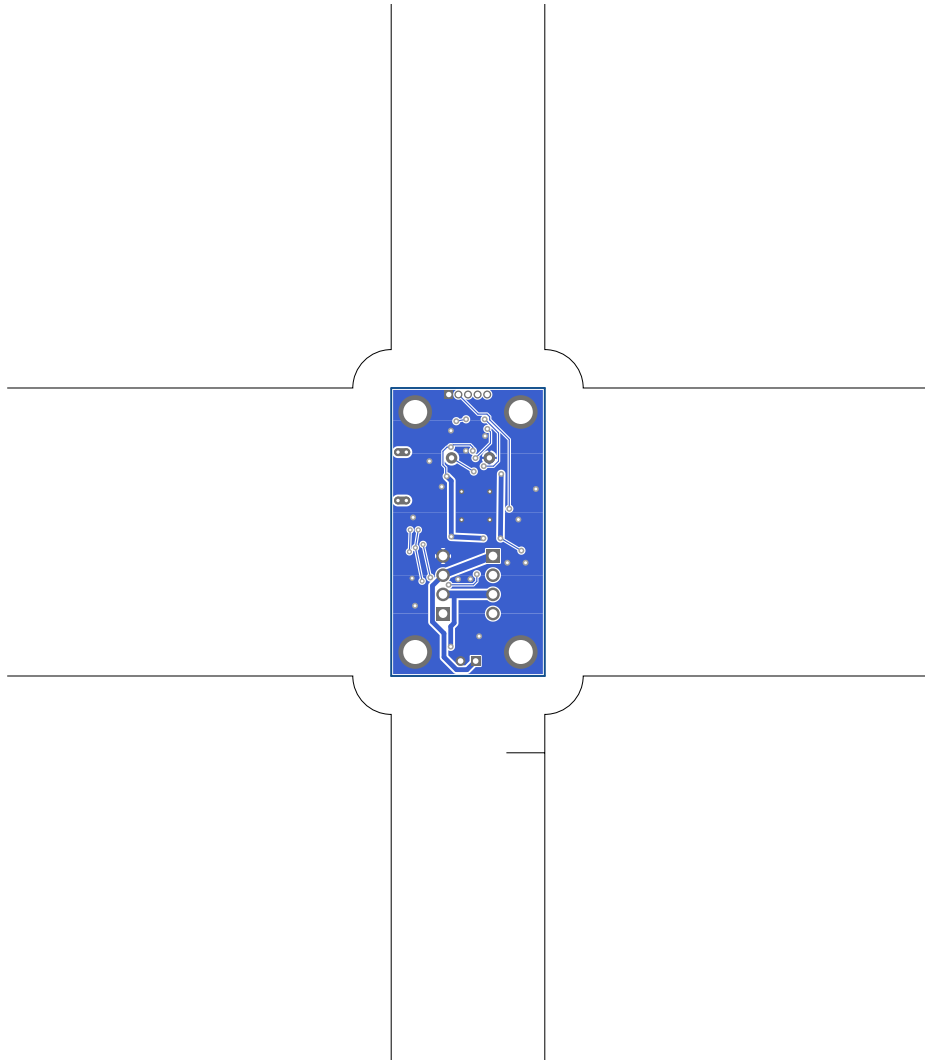
12. topassembly

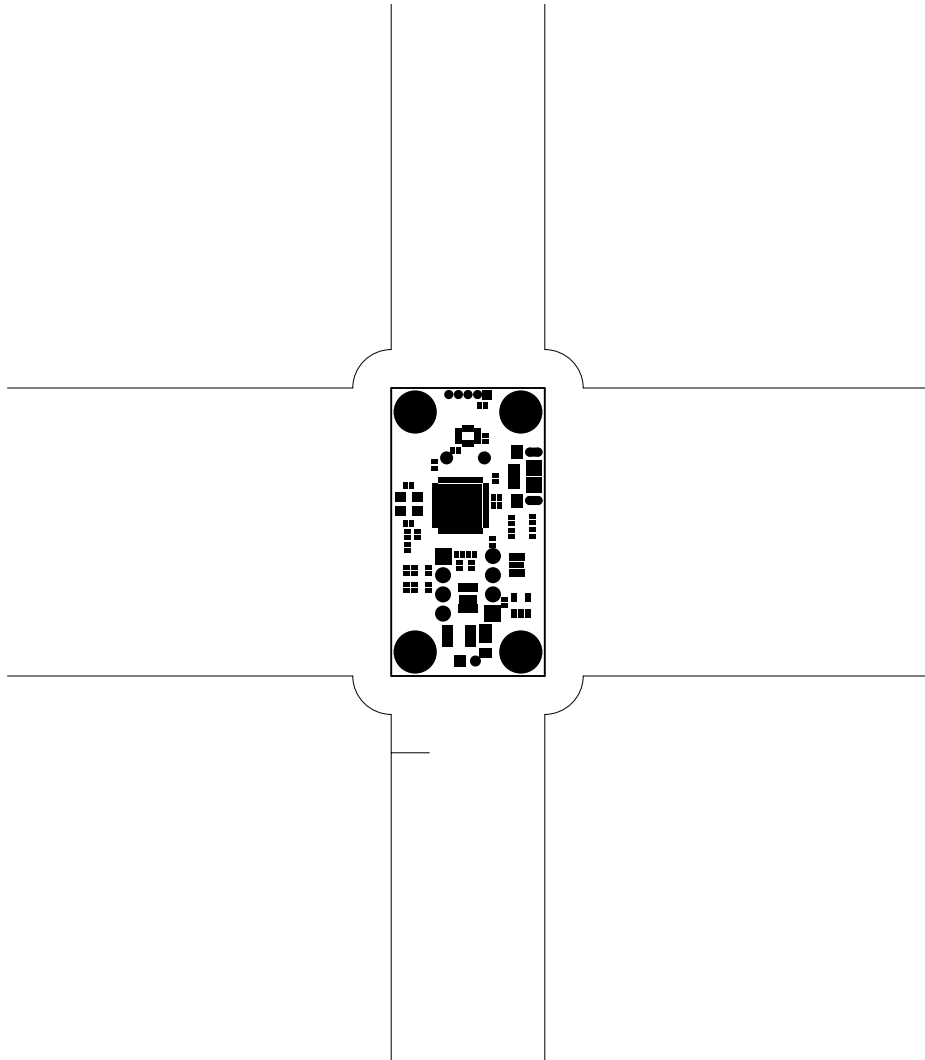
13. bottomassembly

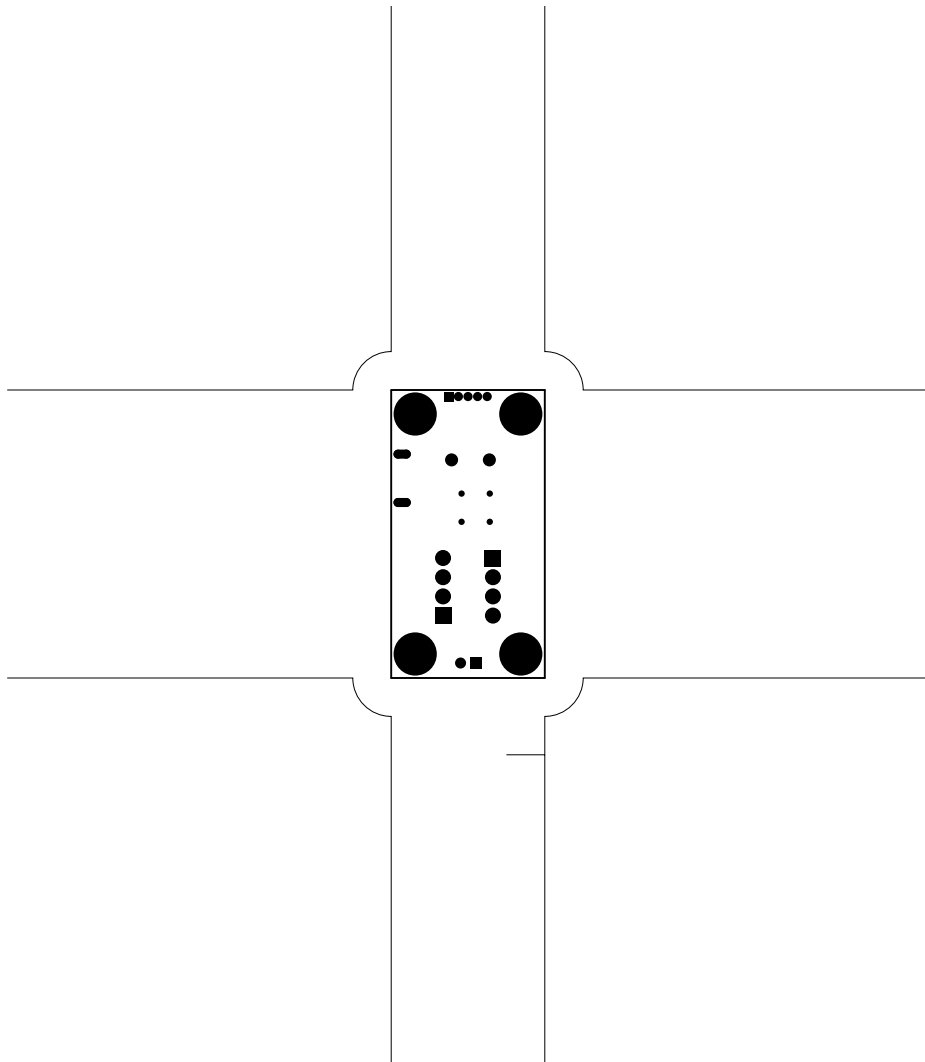
14. fab

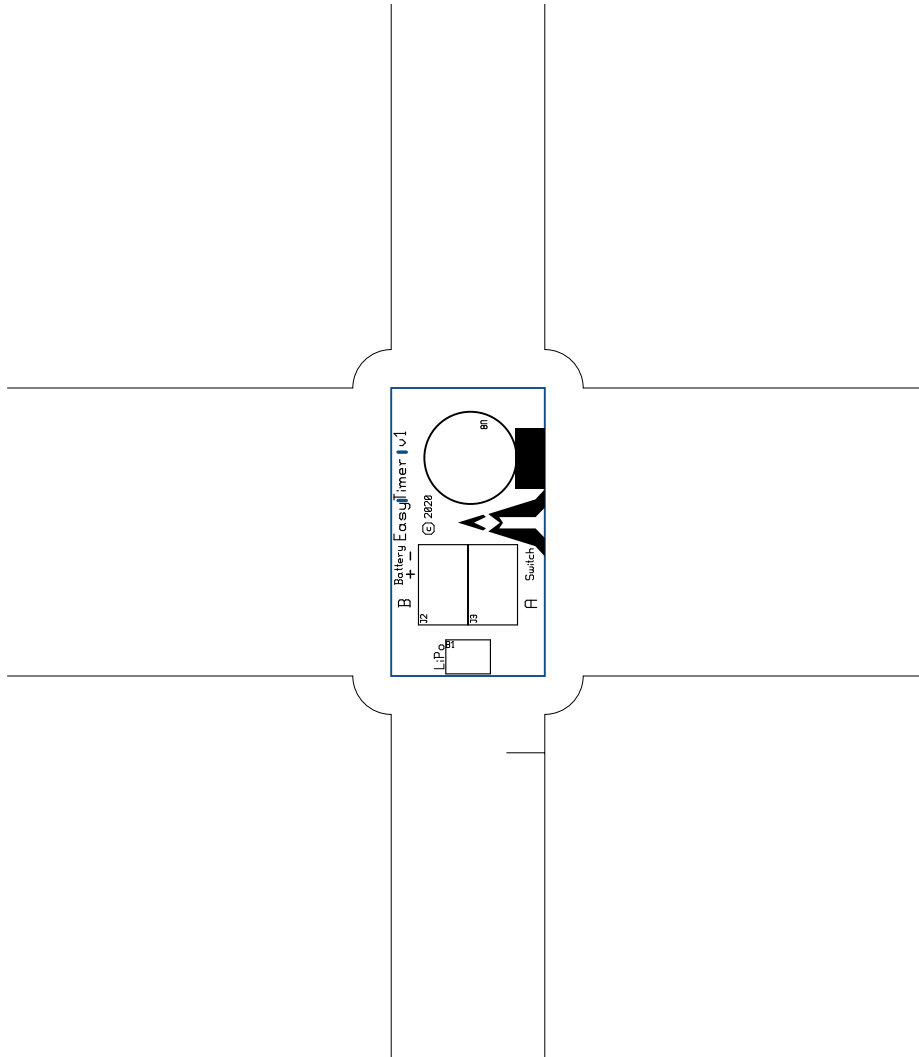


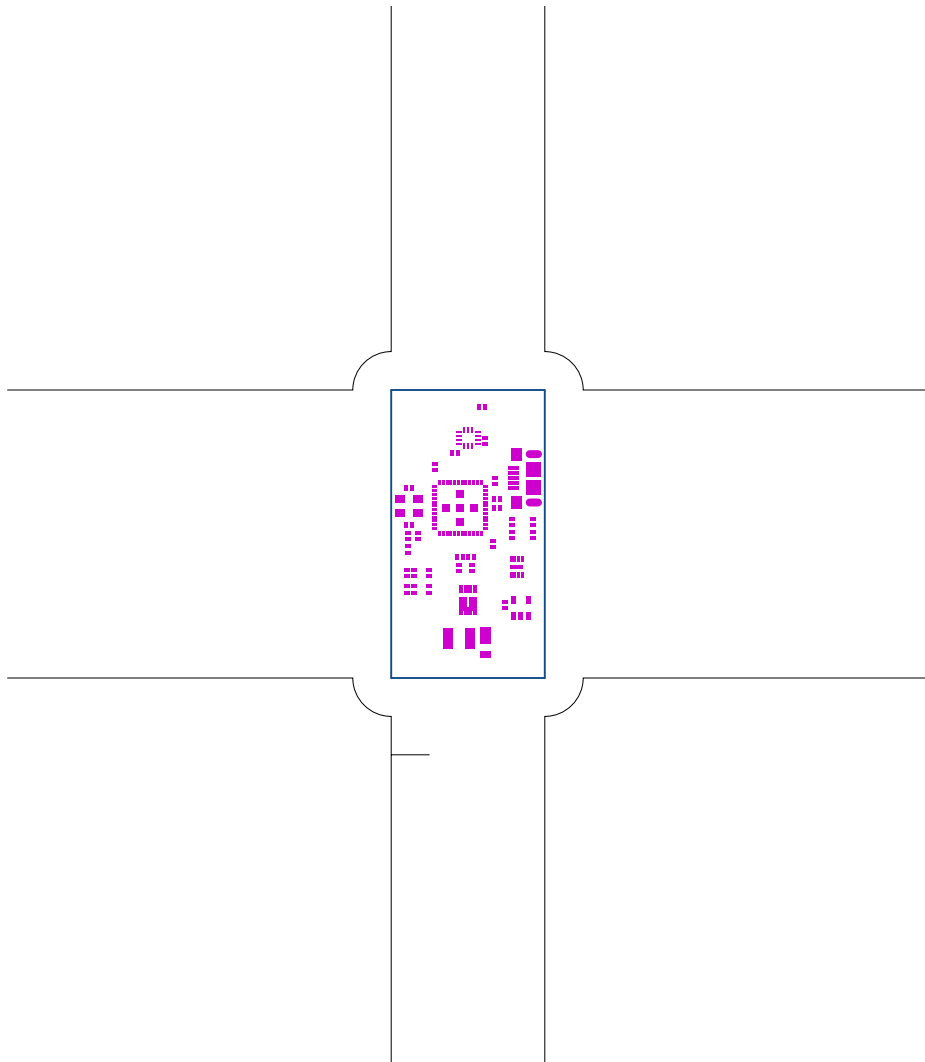


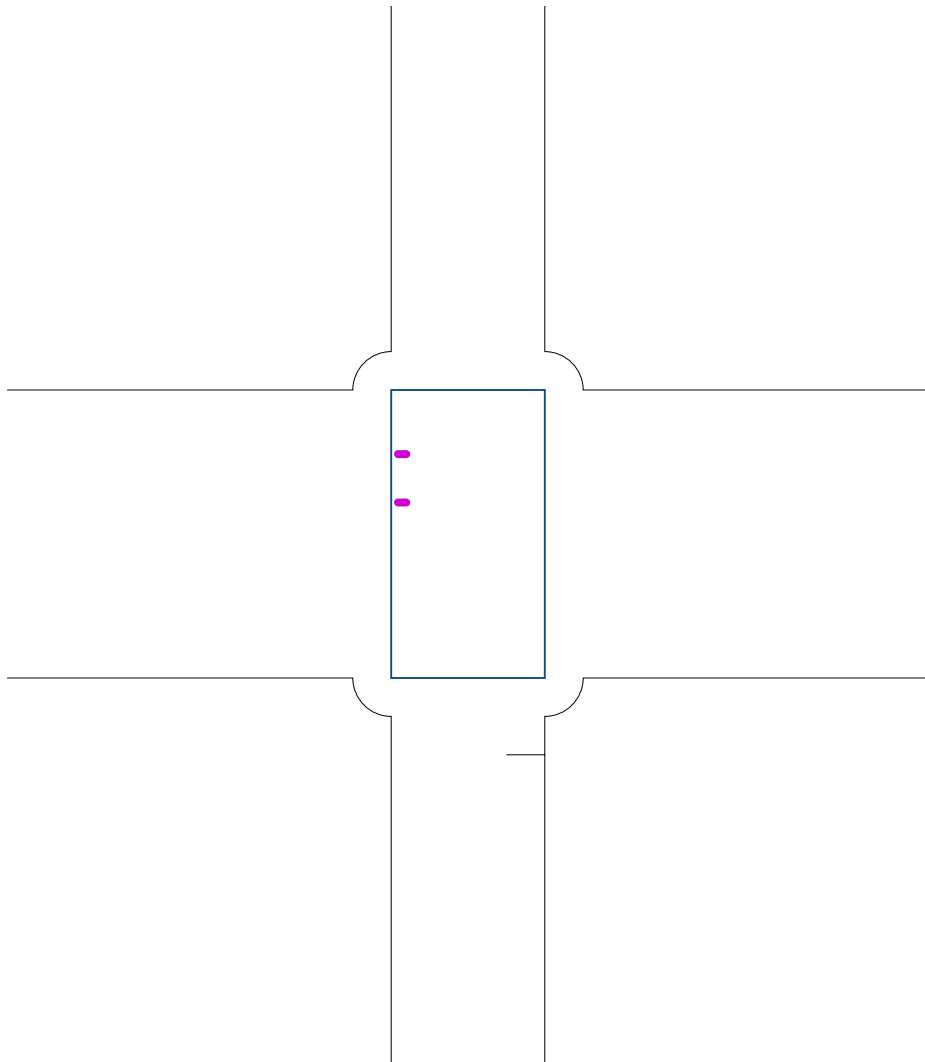


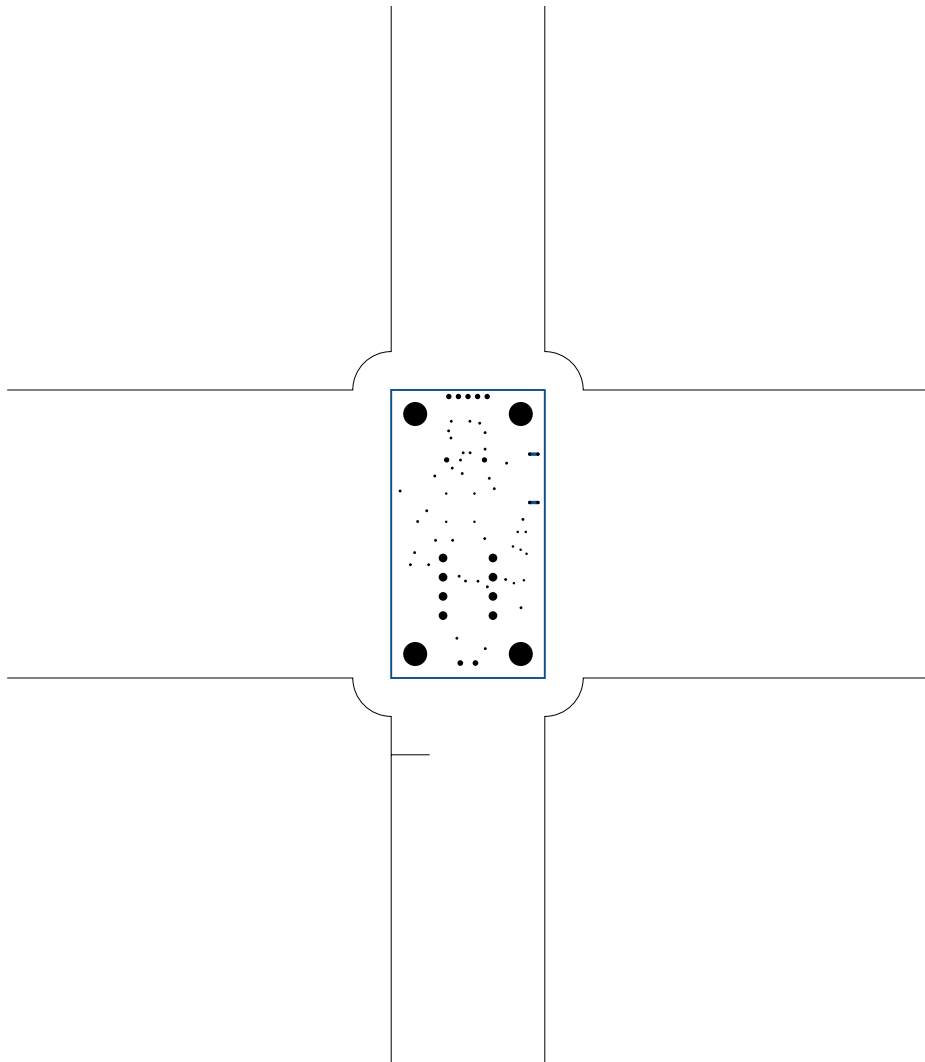


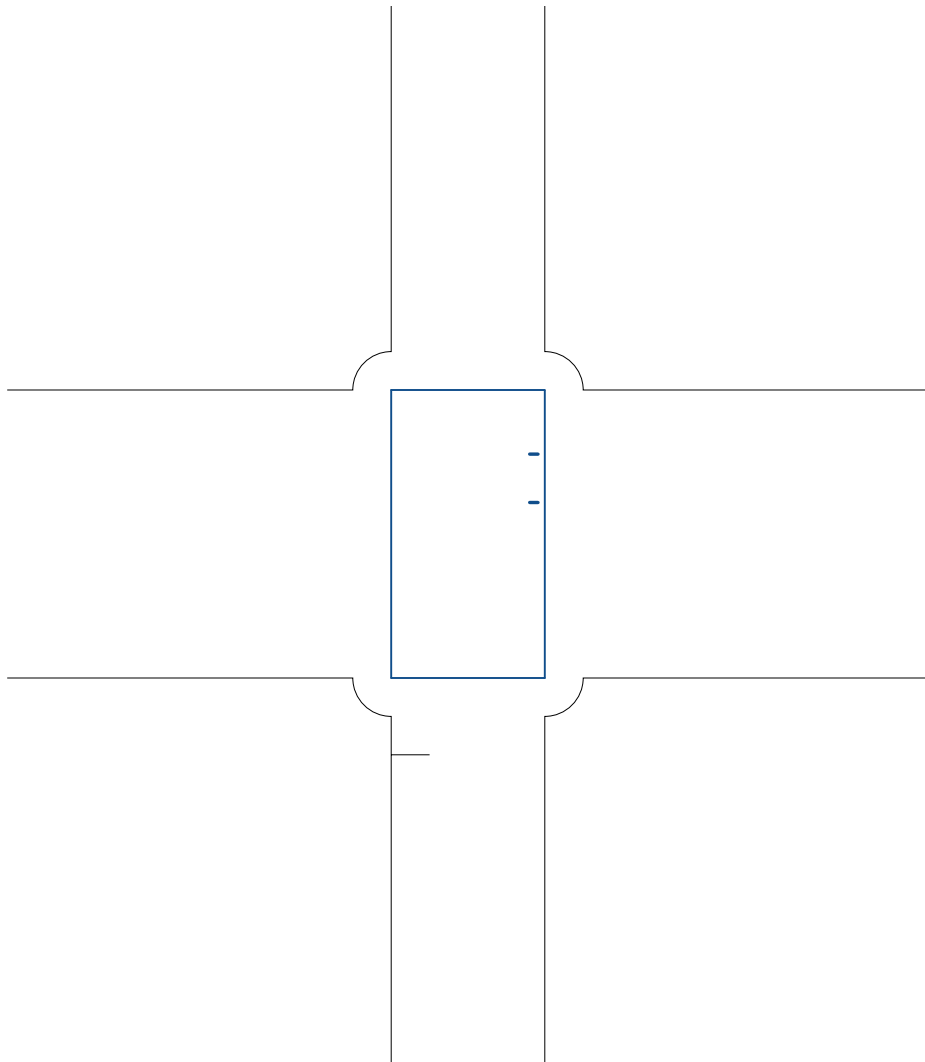


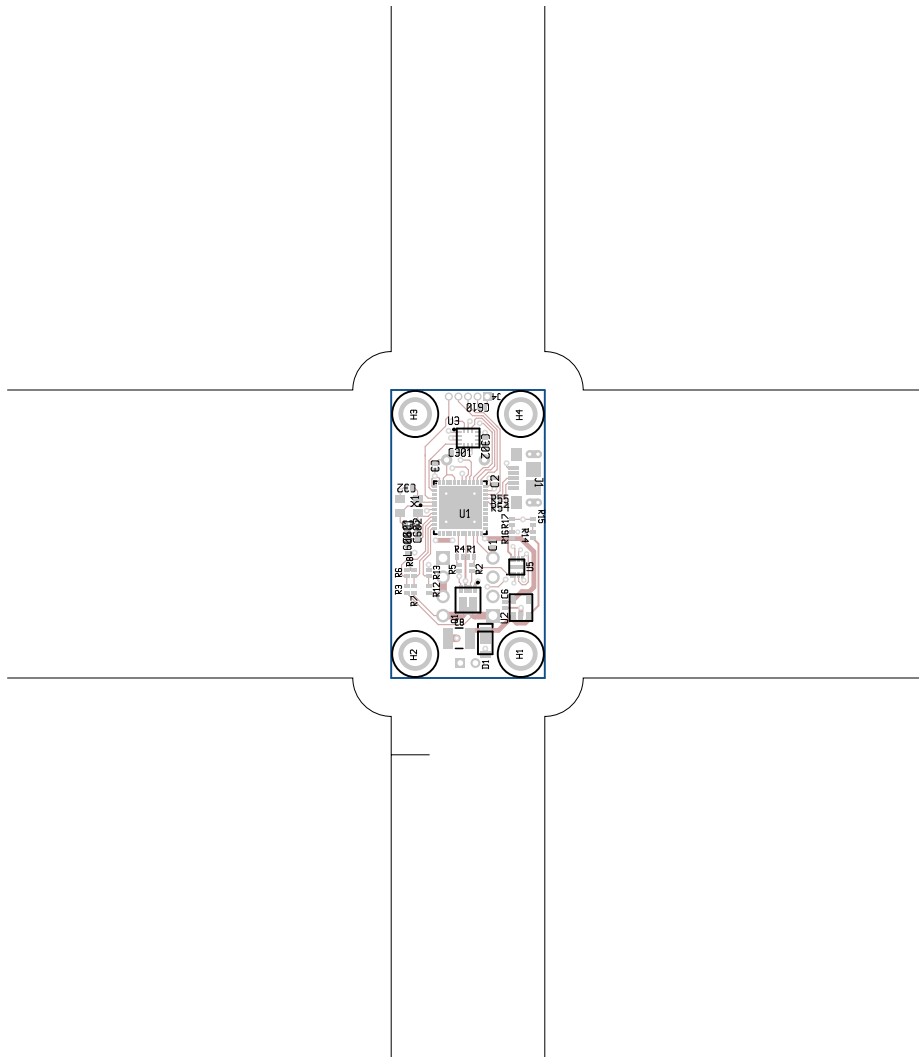


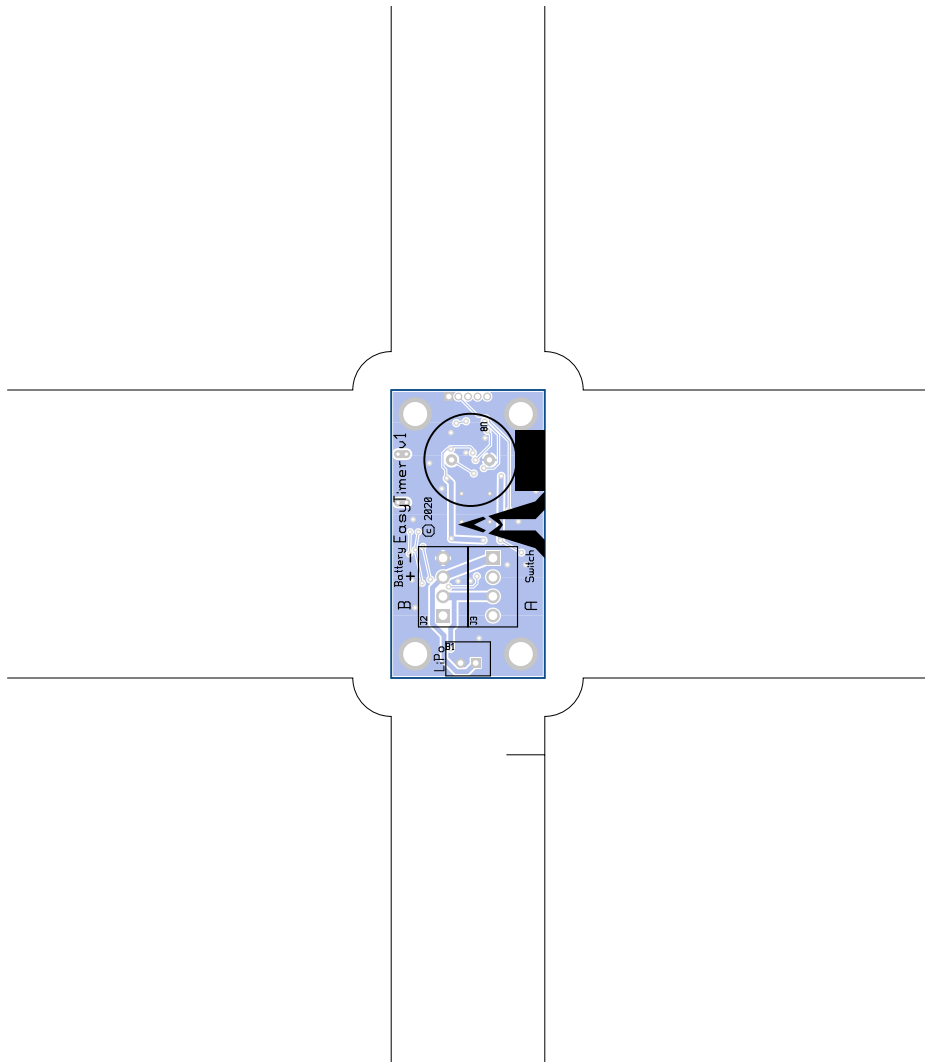












There are 7 different drill sizes used in this layout, 70 holes total.

| Symbol | Diam. (Inch) | Count | Plated? |
|--------|--------------|-------|---------|
| γ | 0.013 | 11 | YES |
| + | 0.015 | 34 | YES |
| x | 0.018 | 4 | YES |
| ◦ | 0.028 | 7 | YES |
| □ | 0.030 | 2 | YES |
| ψ | 0.045 | 8 | YES |
| ⊕ | 0.125 | 4 | YES |

Title: EasyTimer - Fabrication Drawing
 Author: Bdale Garbee
 Date: 2022-11-06 04:21:58 UTC



Board outline is the centerline of this path.