

1. Table of Contents (This Page)
Created on Sun Dec 12 17:24:55 2021

2. topsilk

3. top

4. group5

5. group7

6. bottom

7. topmask

8. bottommask

9. bottomsilk

10. plated-drill

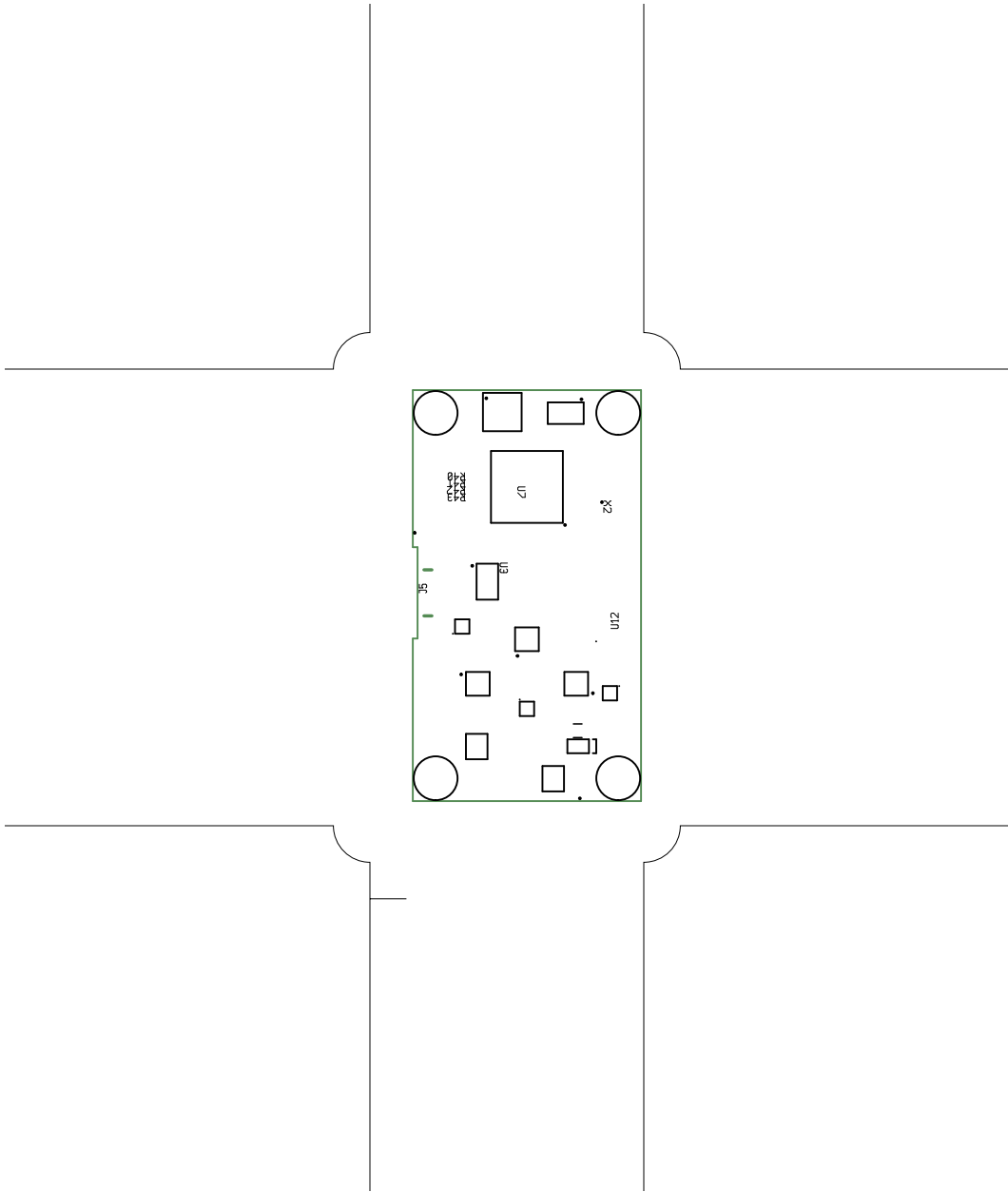
11. toppaste

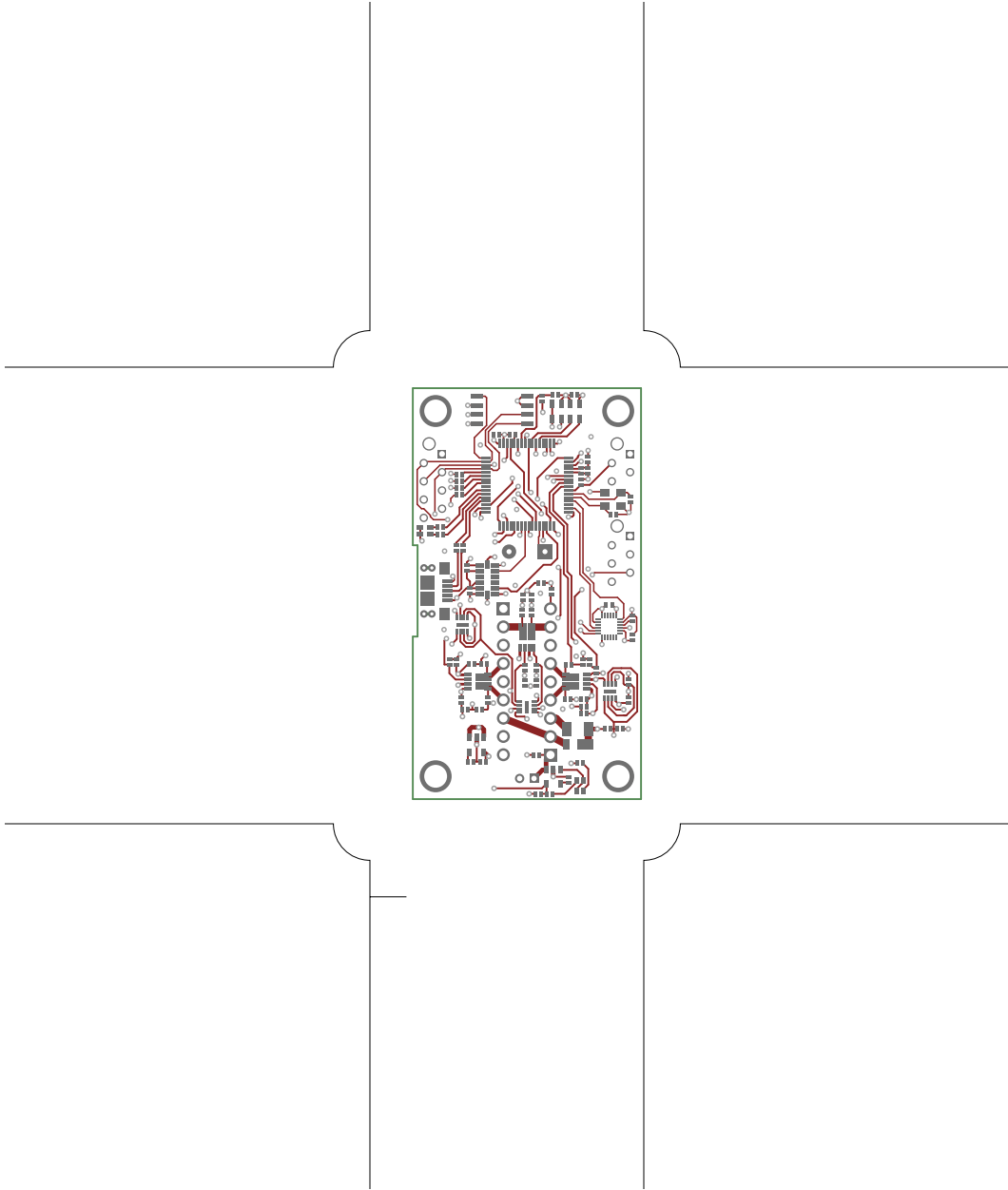
12. outline

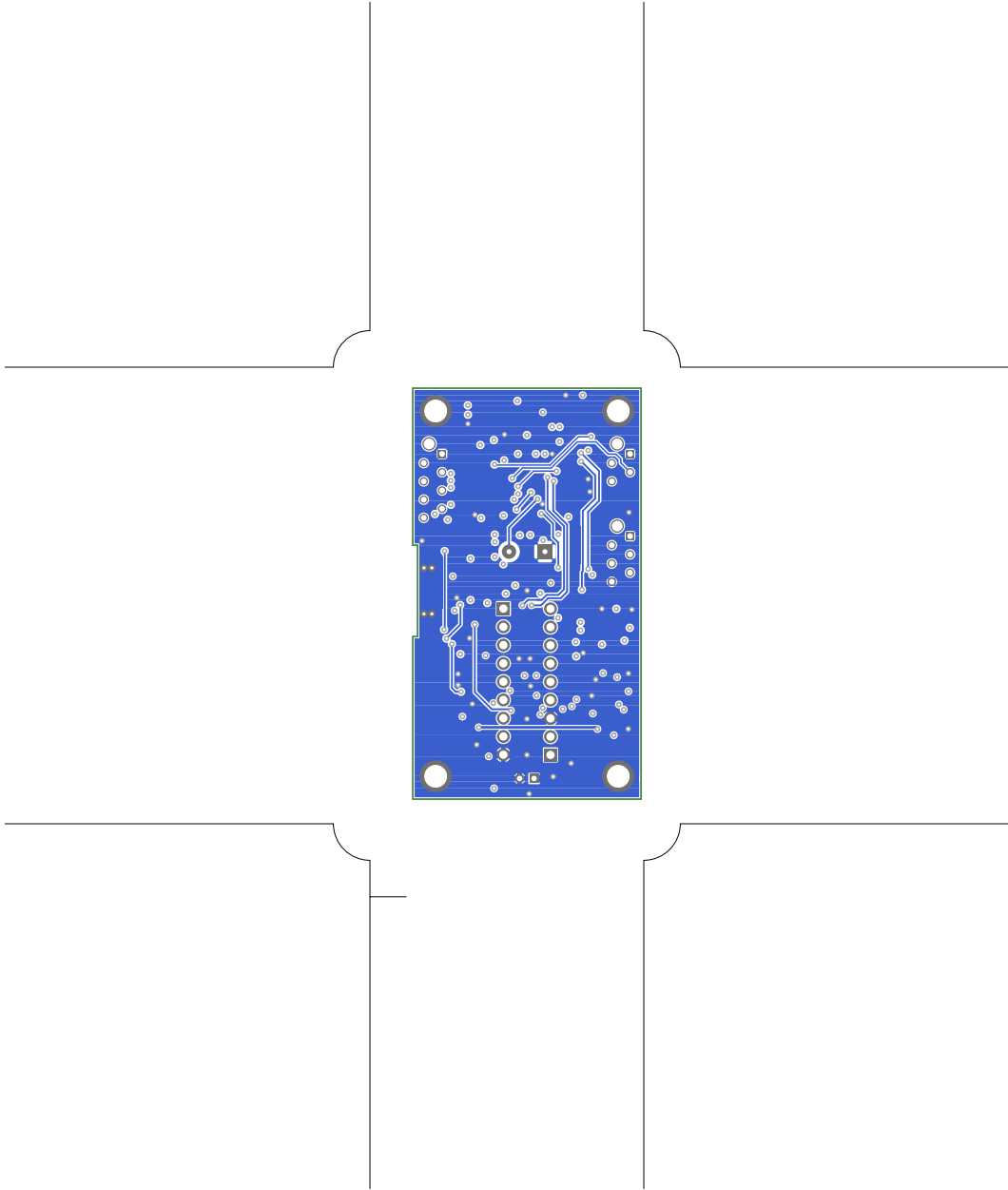
13. topassembly

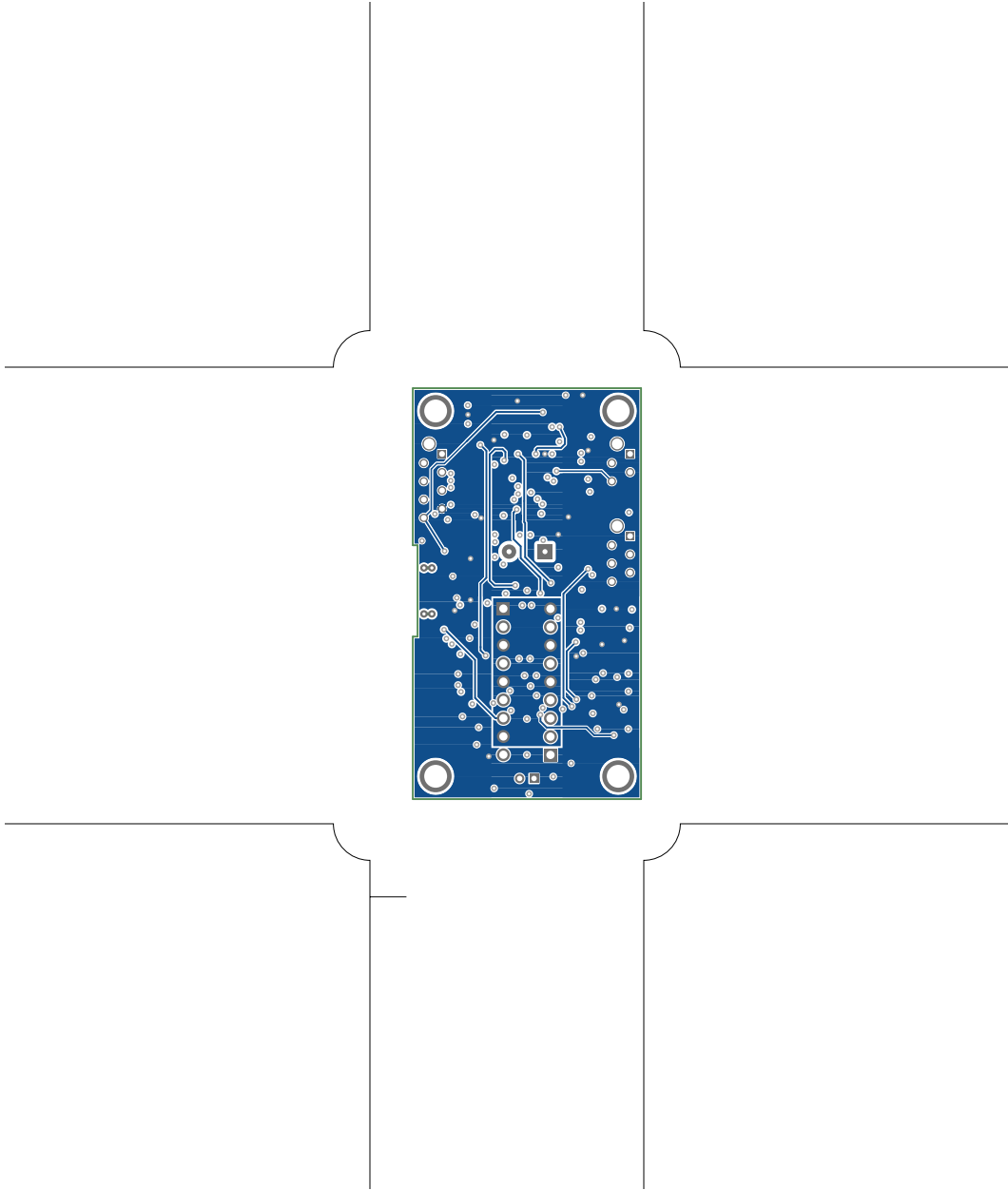
14. bottomassembly

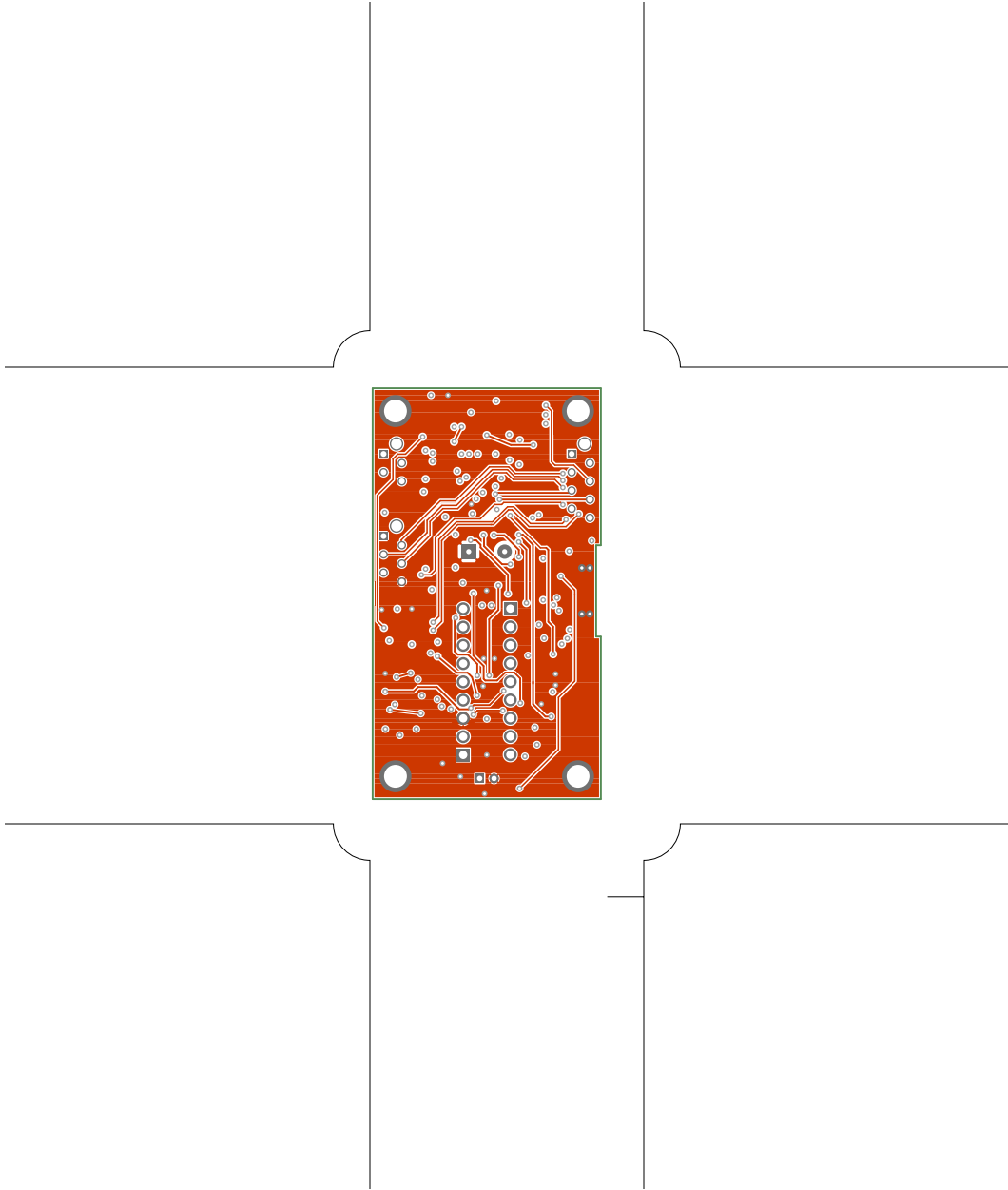
15. fab

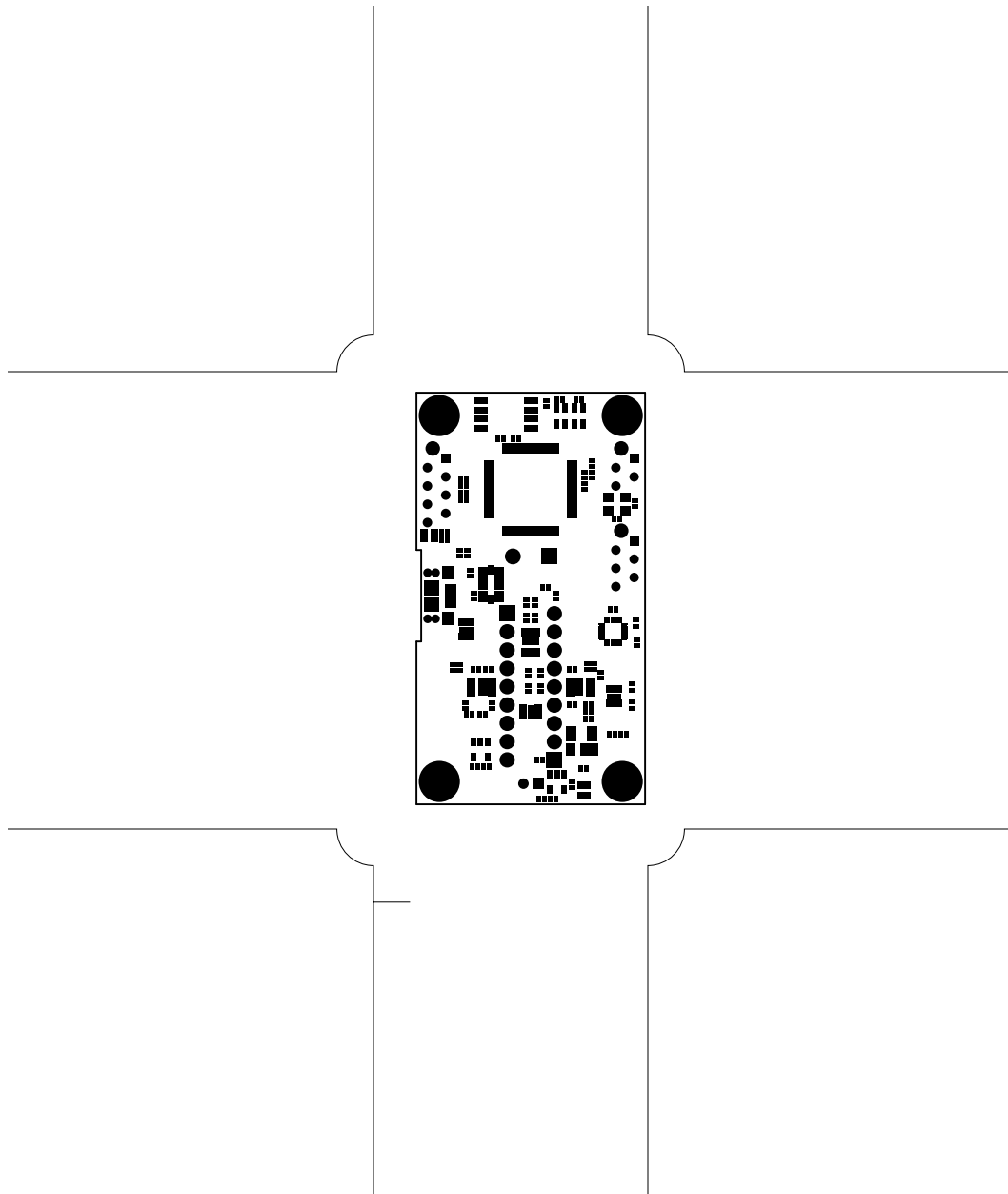


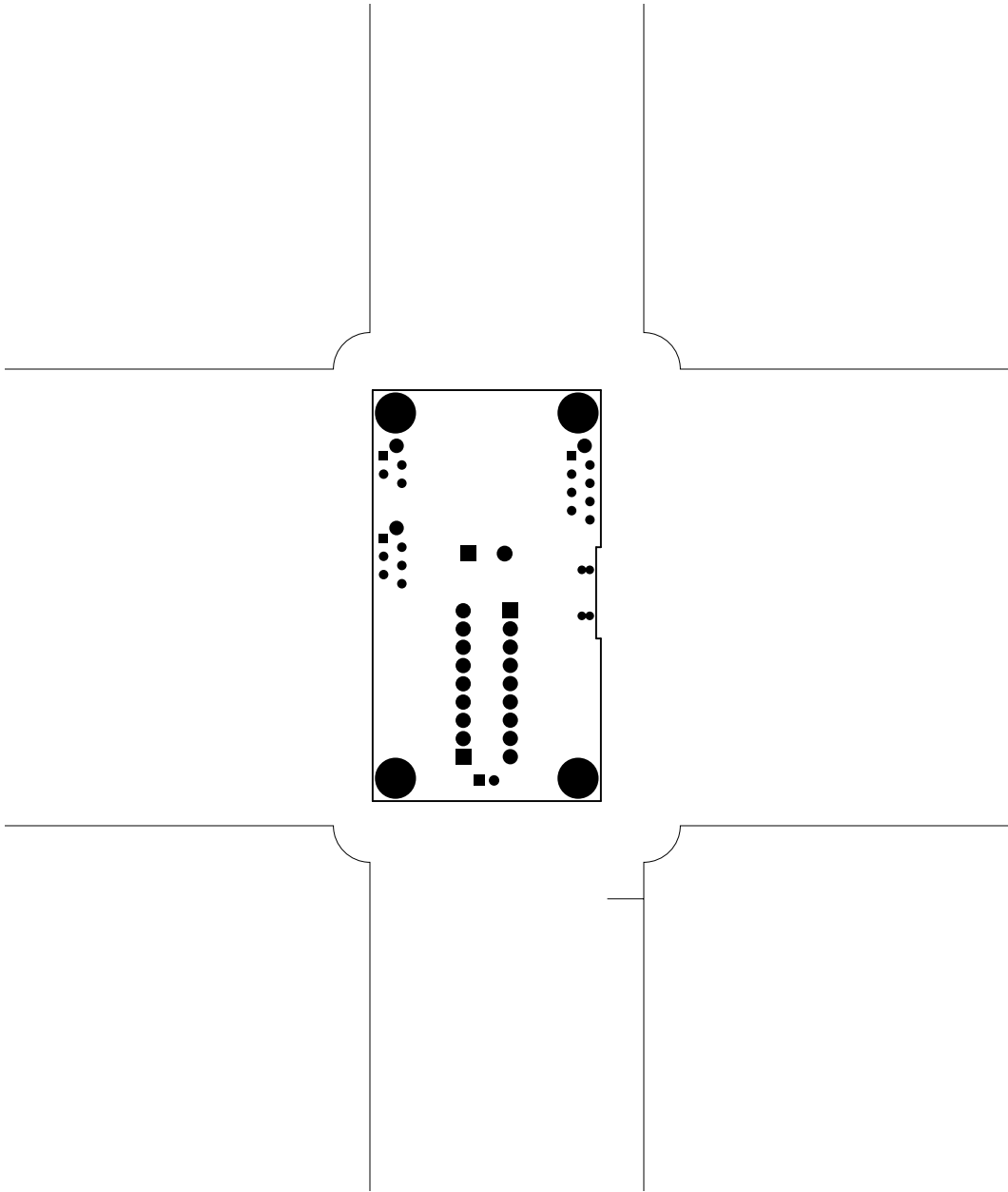


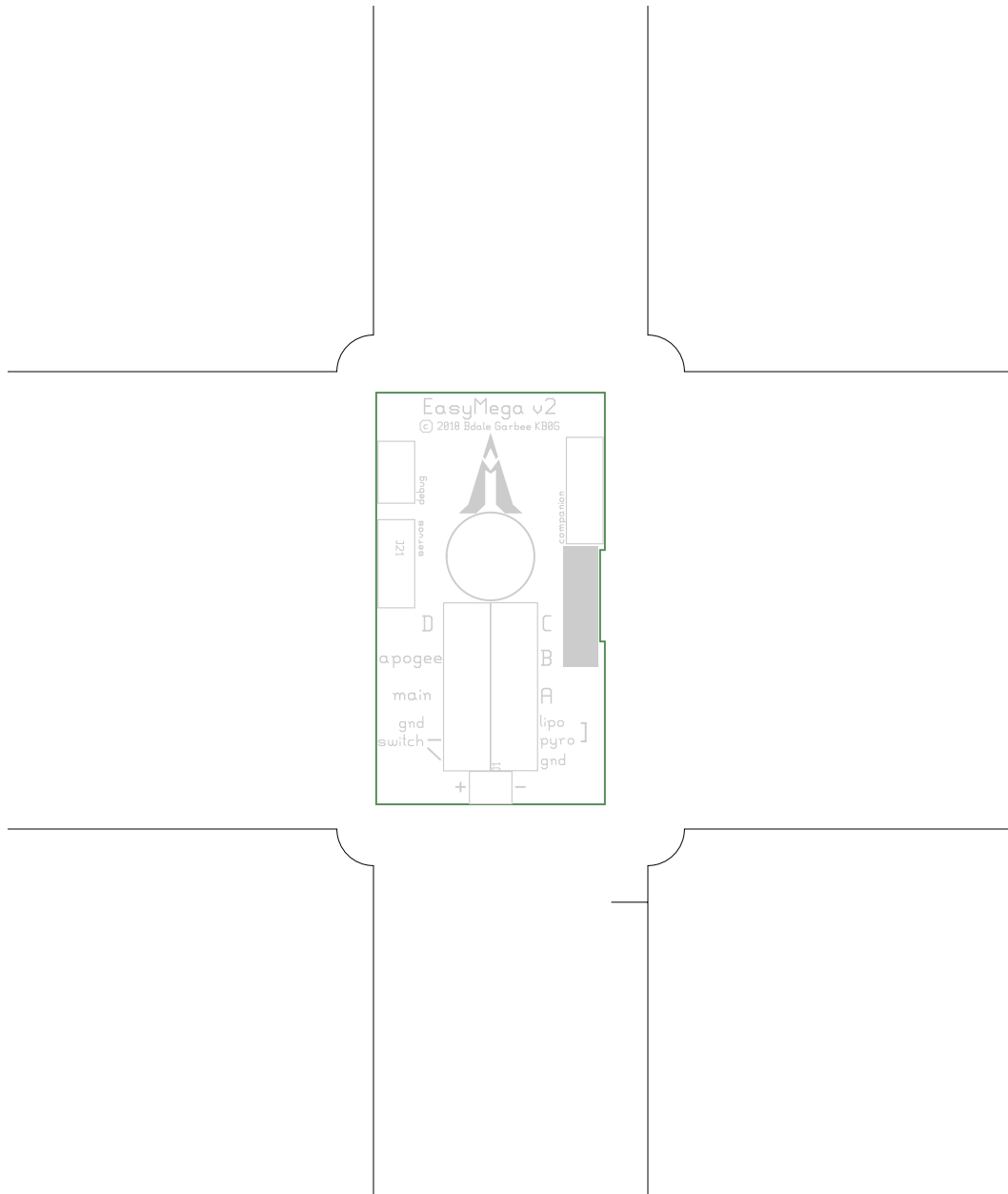


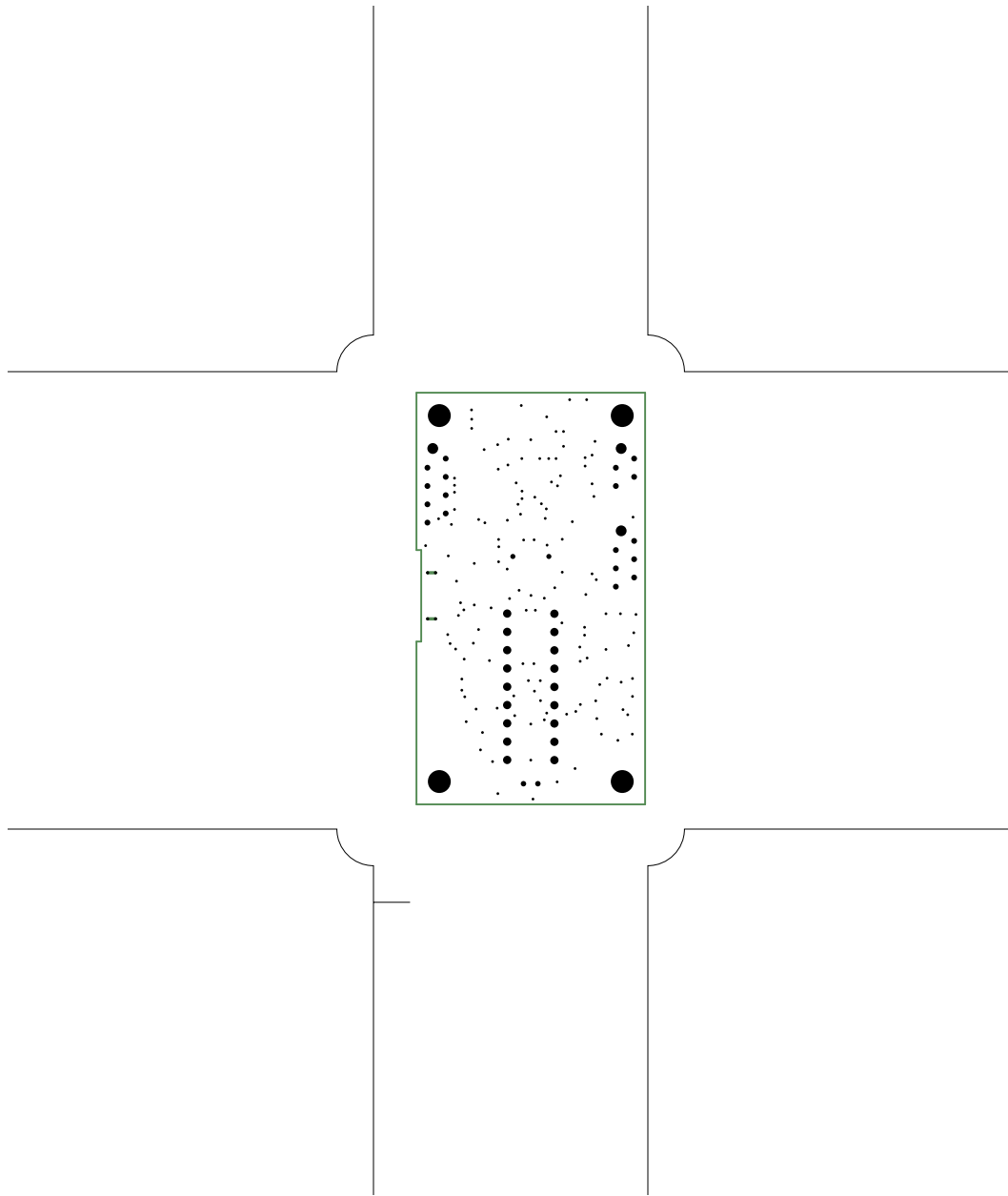


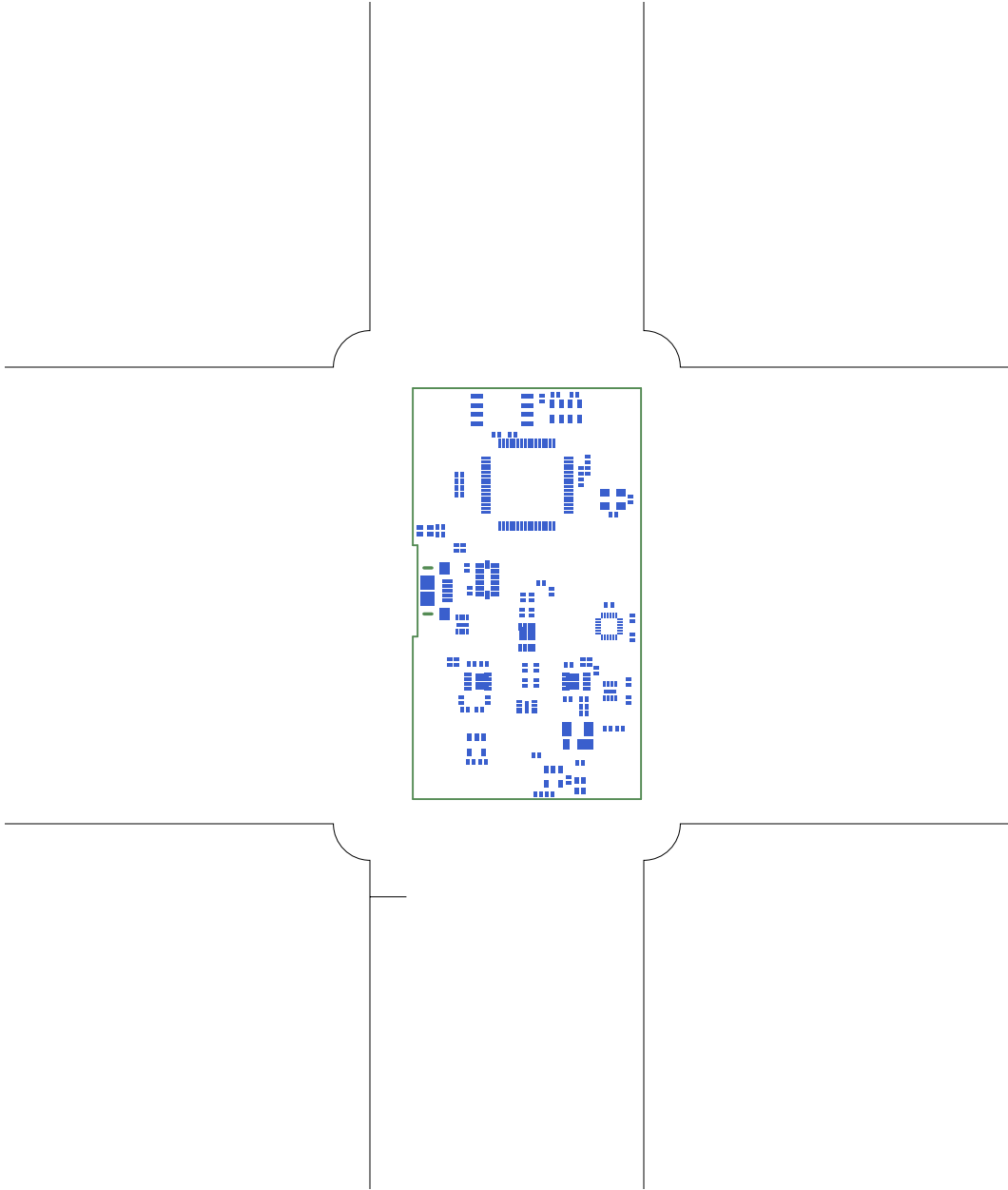


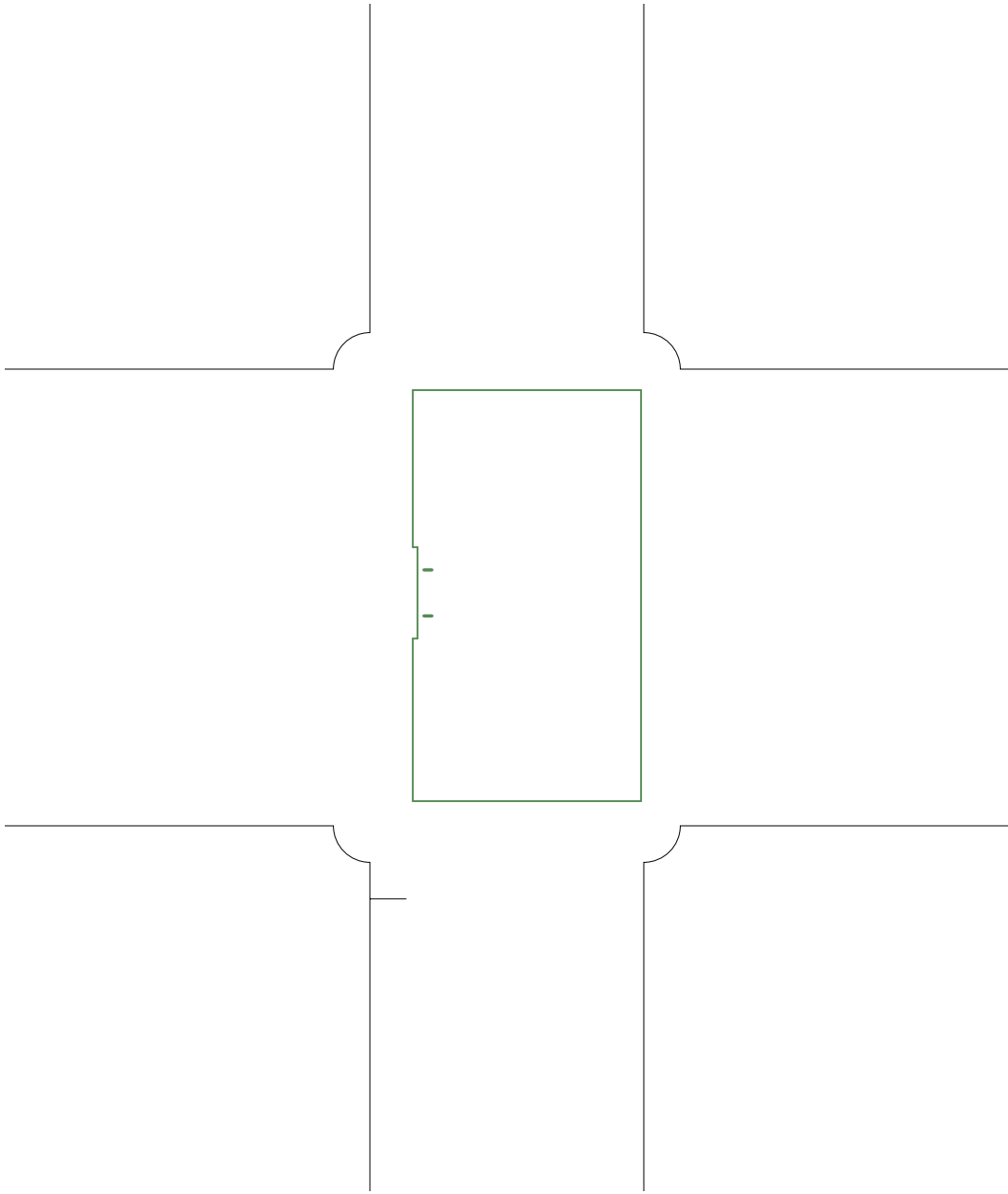


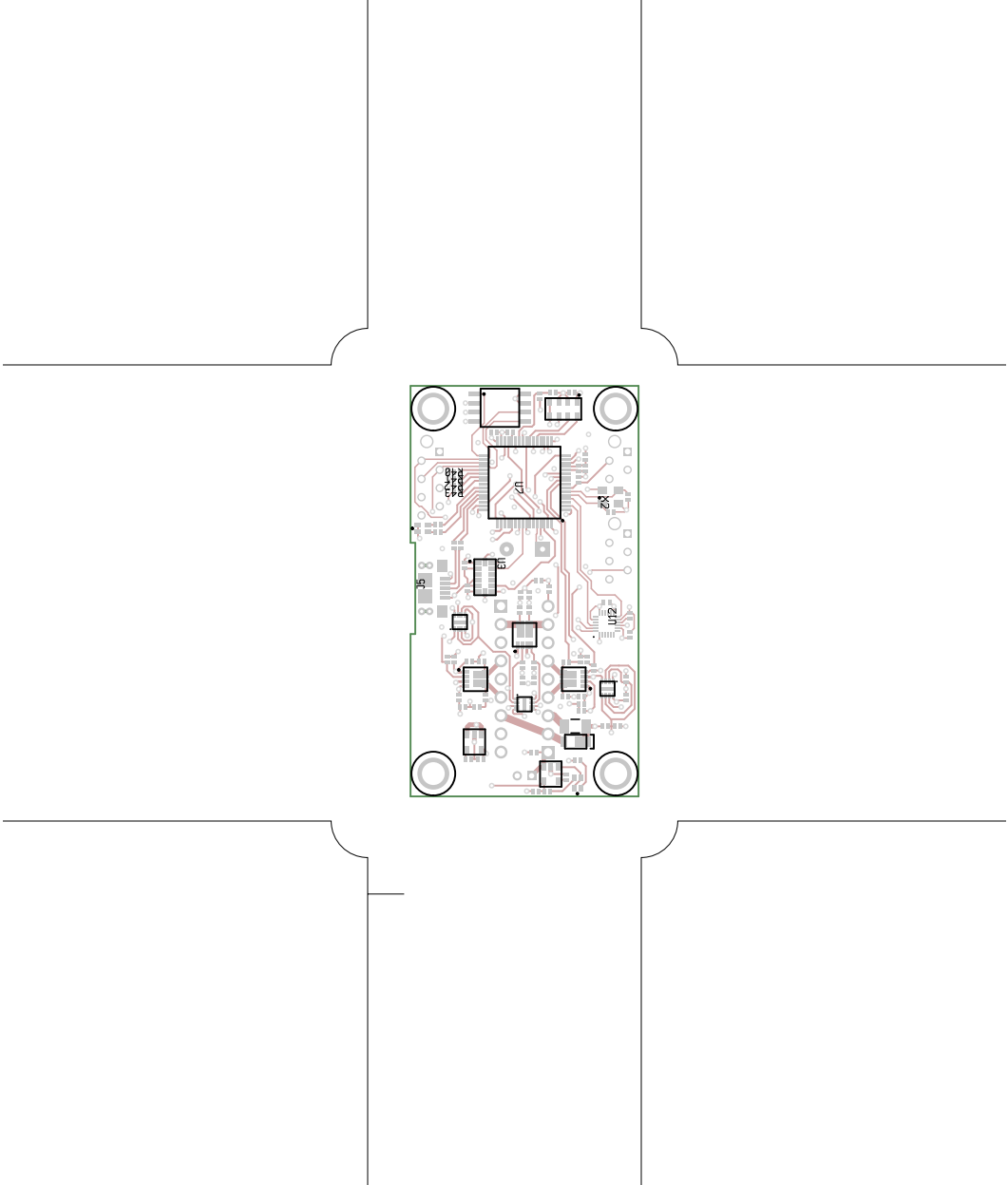


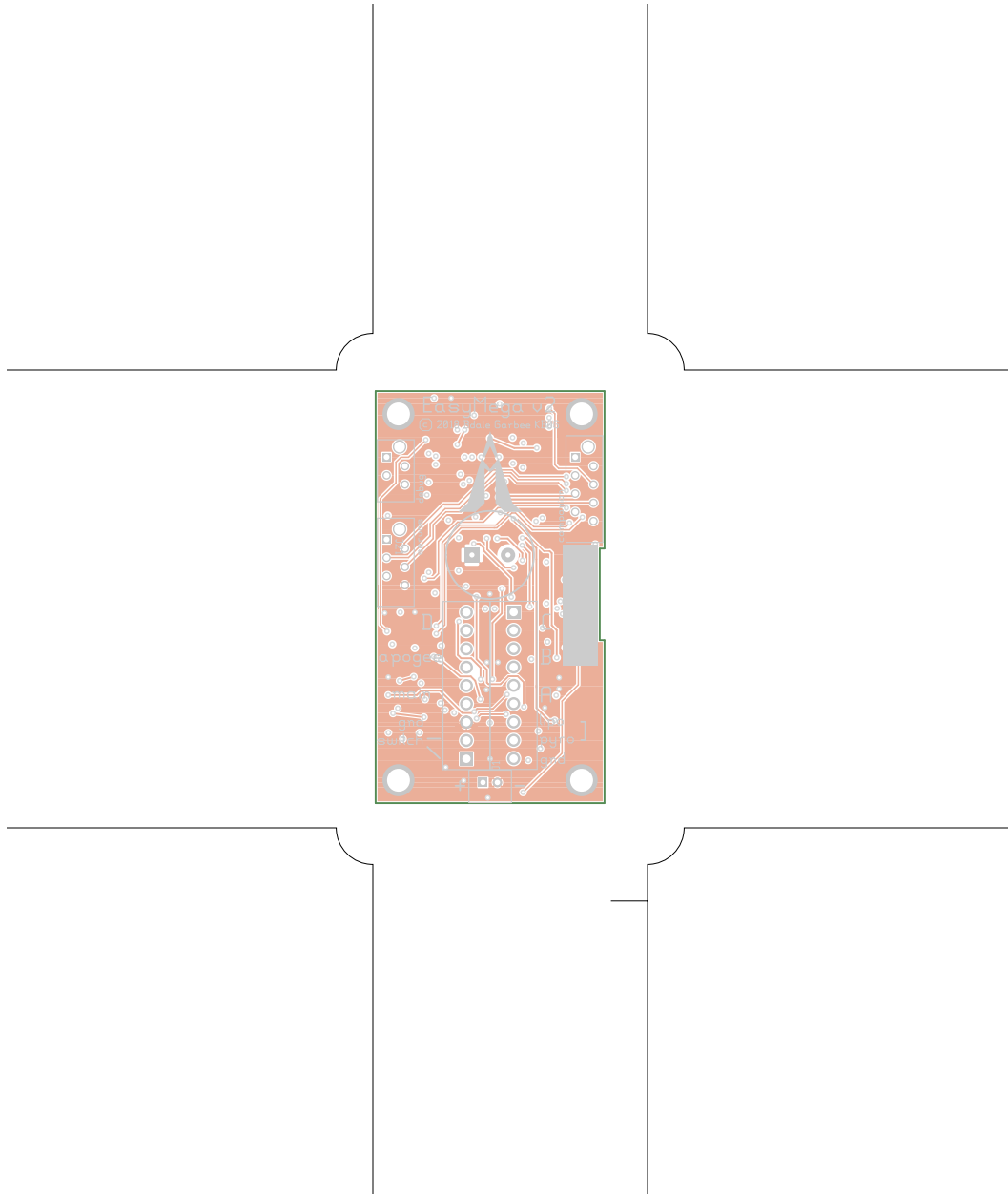










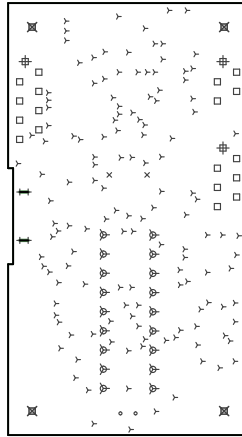


EasyMega, bottomassembly (mirrored), scale = 1:1.000
easymega.lht

There are 8 different drill sizes used in this layout, 187 holes total

Symbol	Diam. (Inch)	Count	Plated?
Y	0.015	136	YES
+	0.018	4	YES
x	0.028	2	YES
o	0.030	2	YES
□	0.032	18	YES
⊗	0.045	18	YES
⊕	0.059	3	YES
⊗	0.125	4	YES

Title: EasyMega - Fabrication Drawing
 Author: Bdale Garbee
 Date: 2021-12-13 00:24:56 UTC



Board outline is the centerline of this path