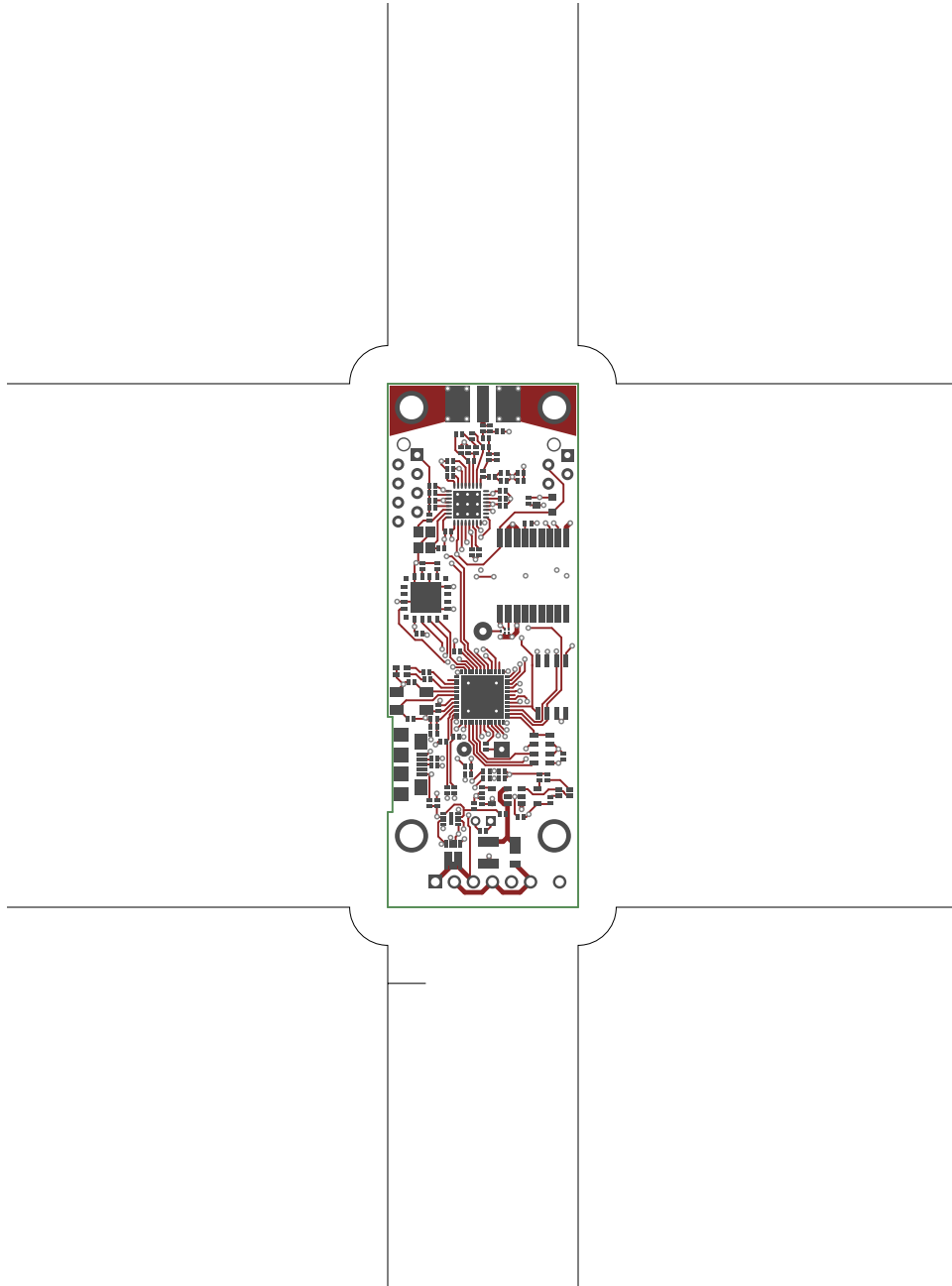
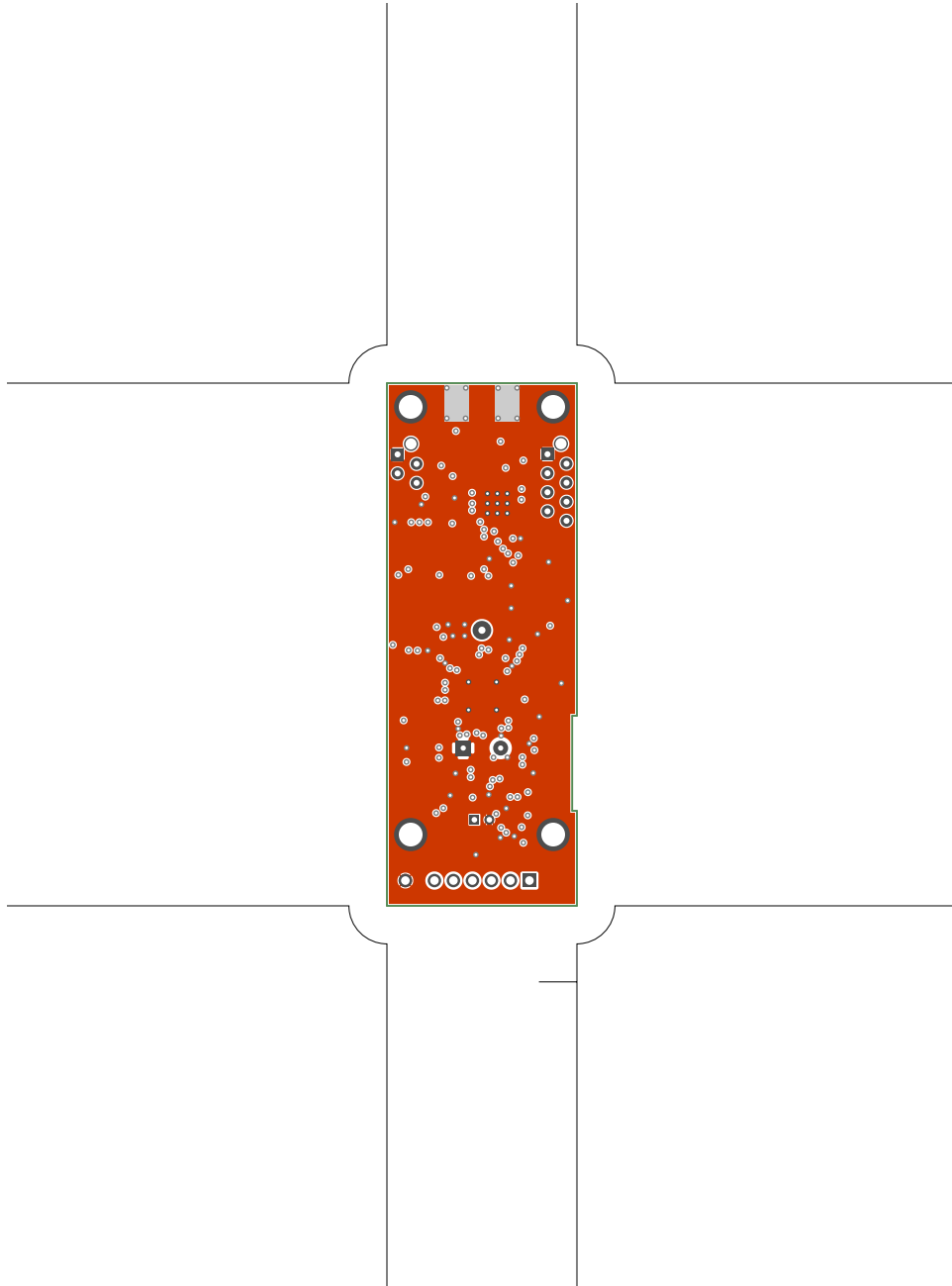


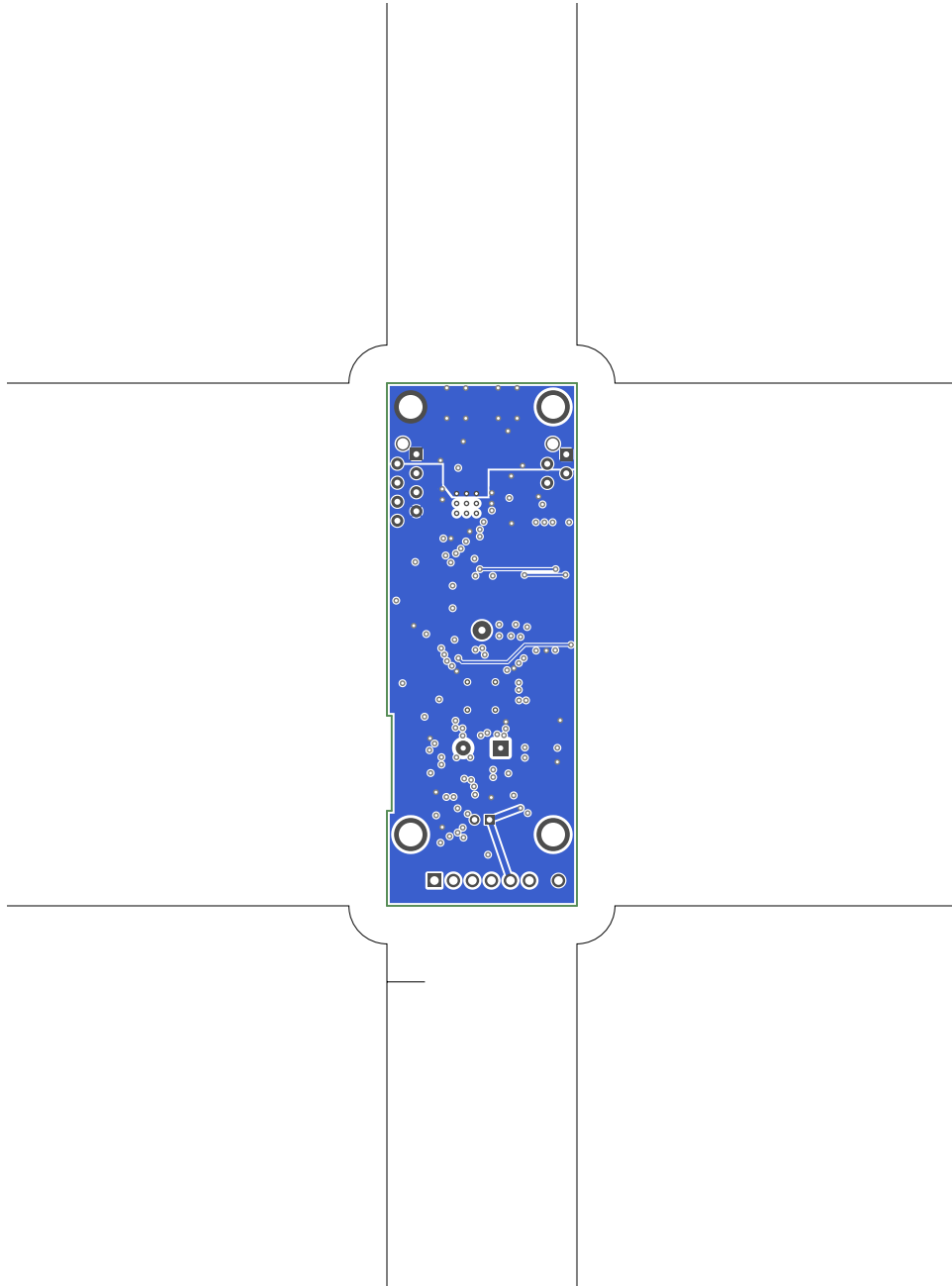
1. Table of Contents (This Page)

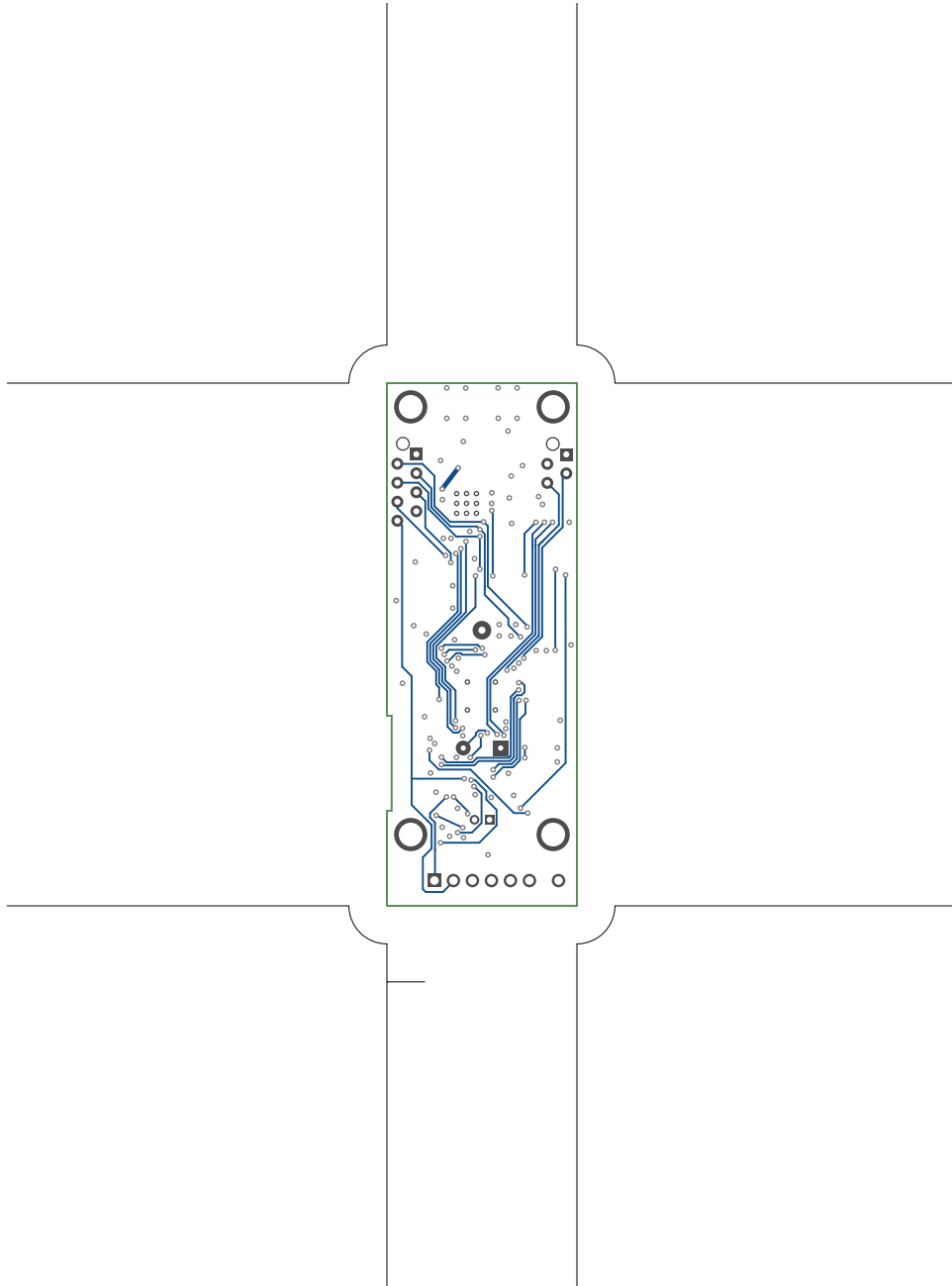
Created on Wed May 8 16:52:56 2019

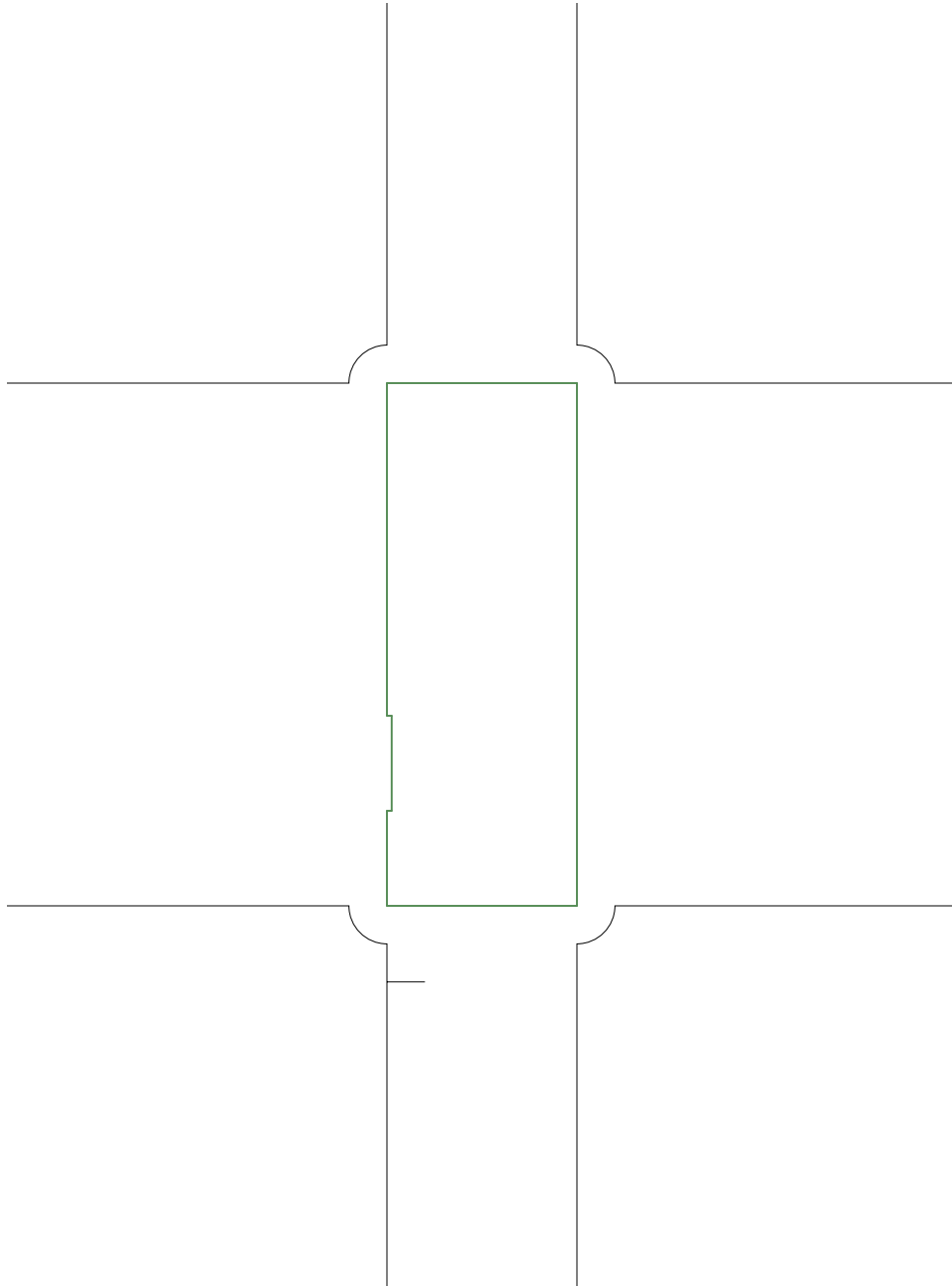
2. top
3. GND
4. power
5. signal
6. outline
7. plated-drill
8. componentmask
9. soldermask
10. topsilk
11. bottomsilk
12. toppaste
13. topassembly
14. bottomassembly
15. fab

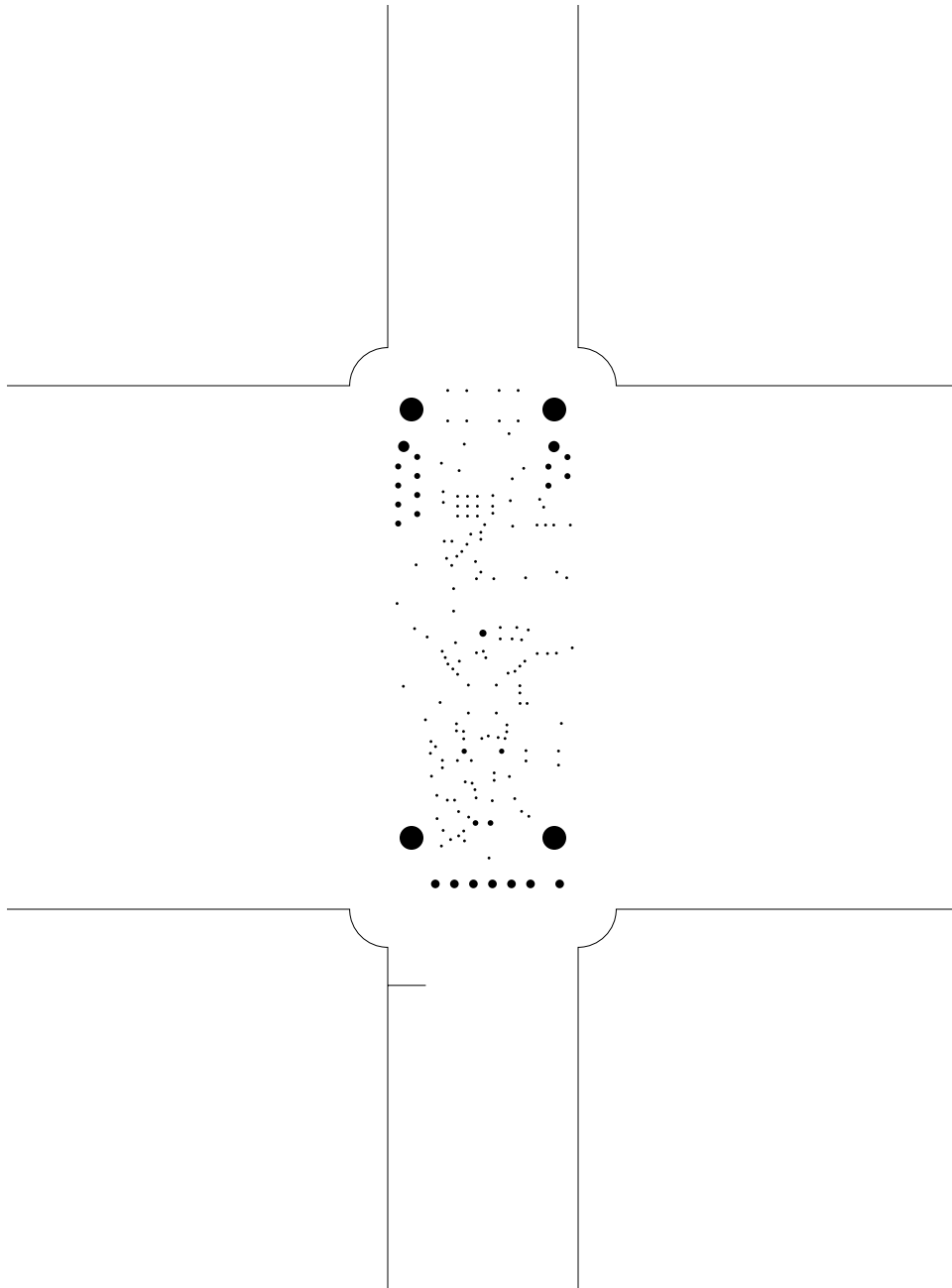


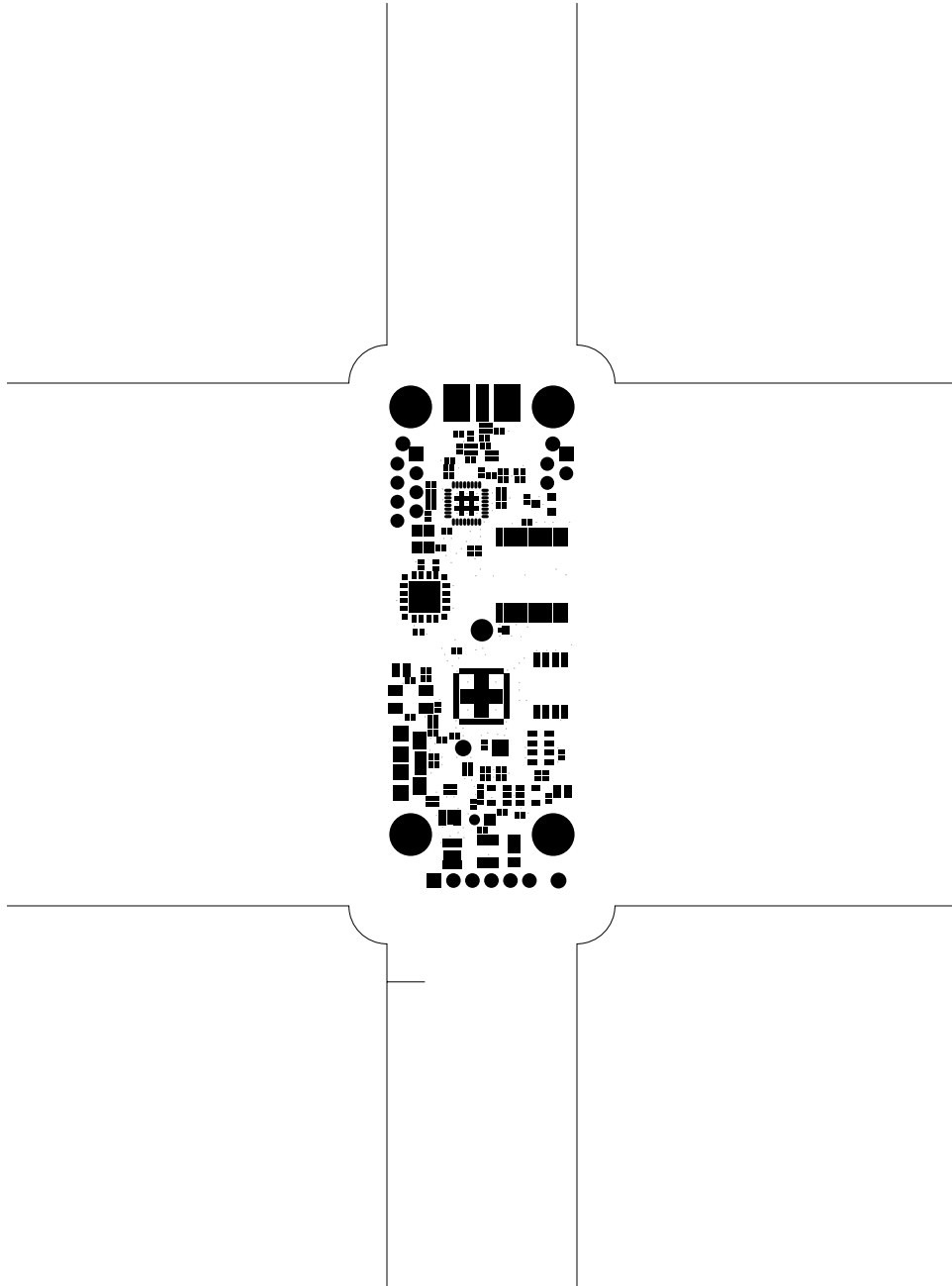


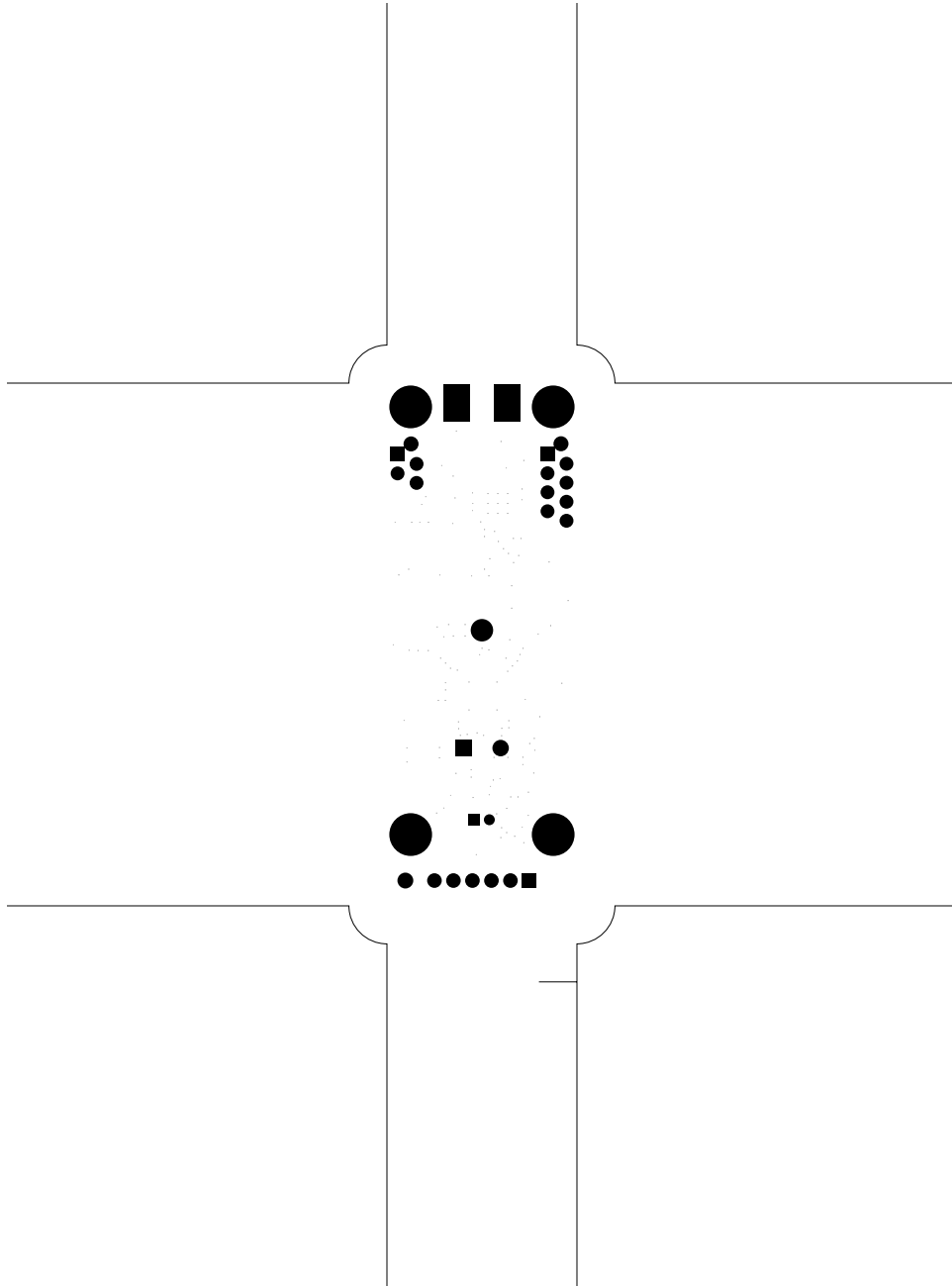


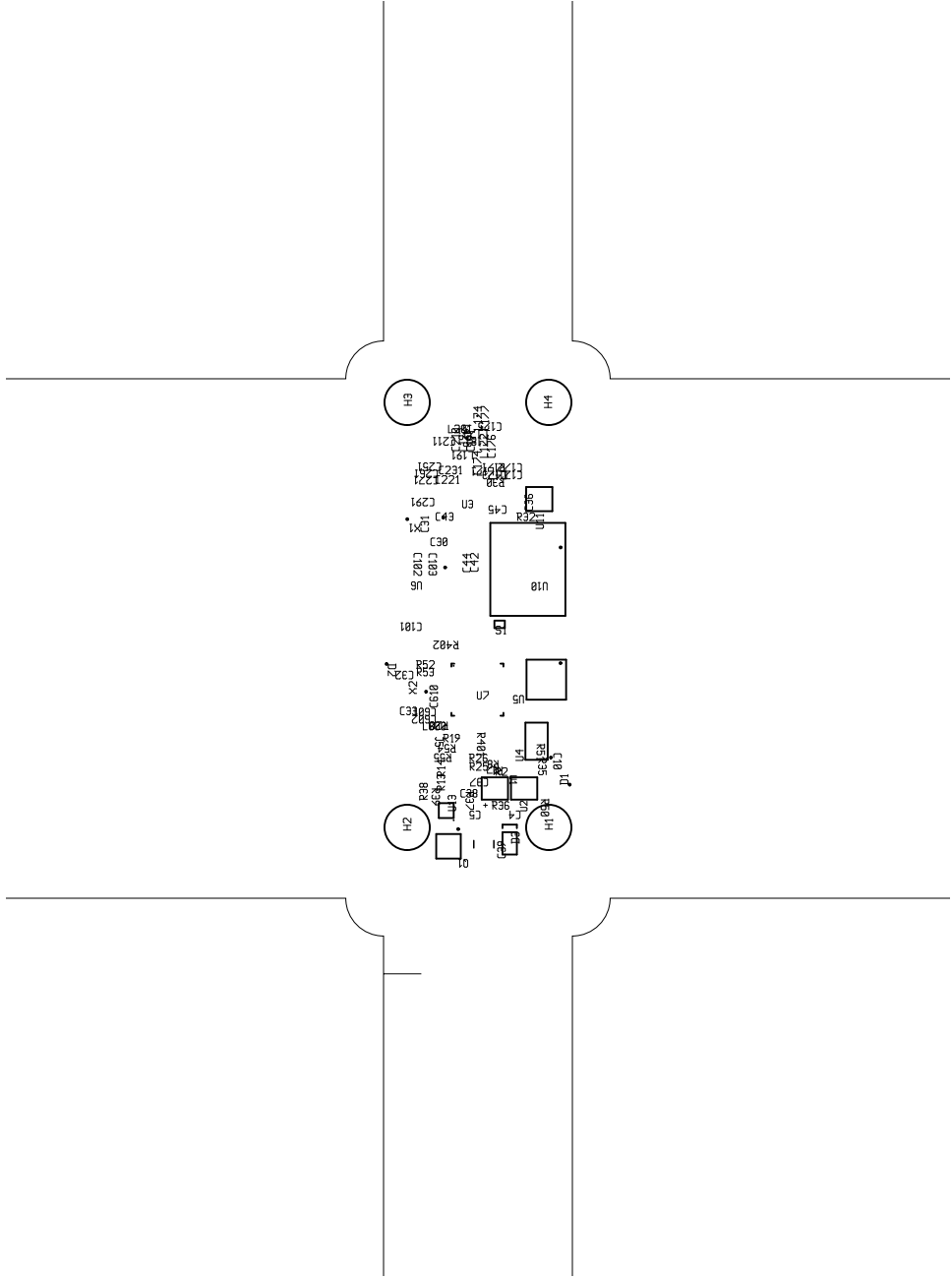


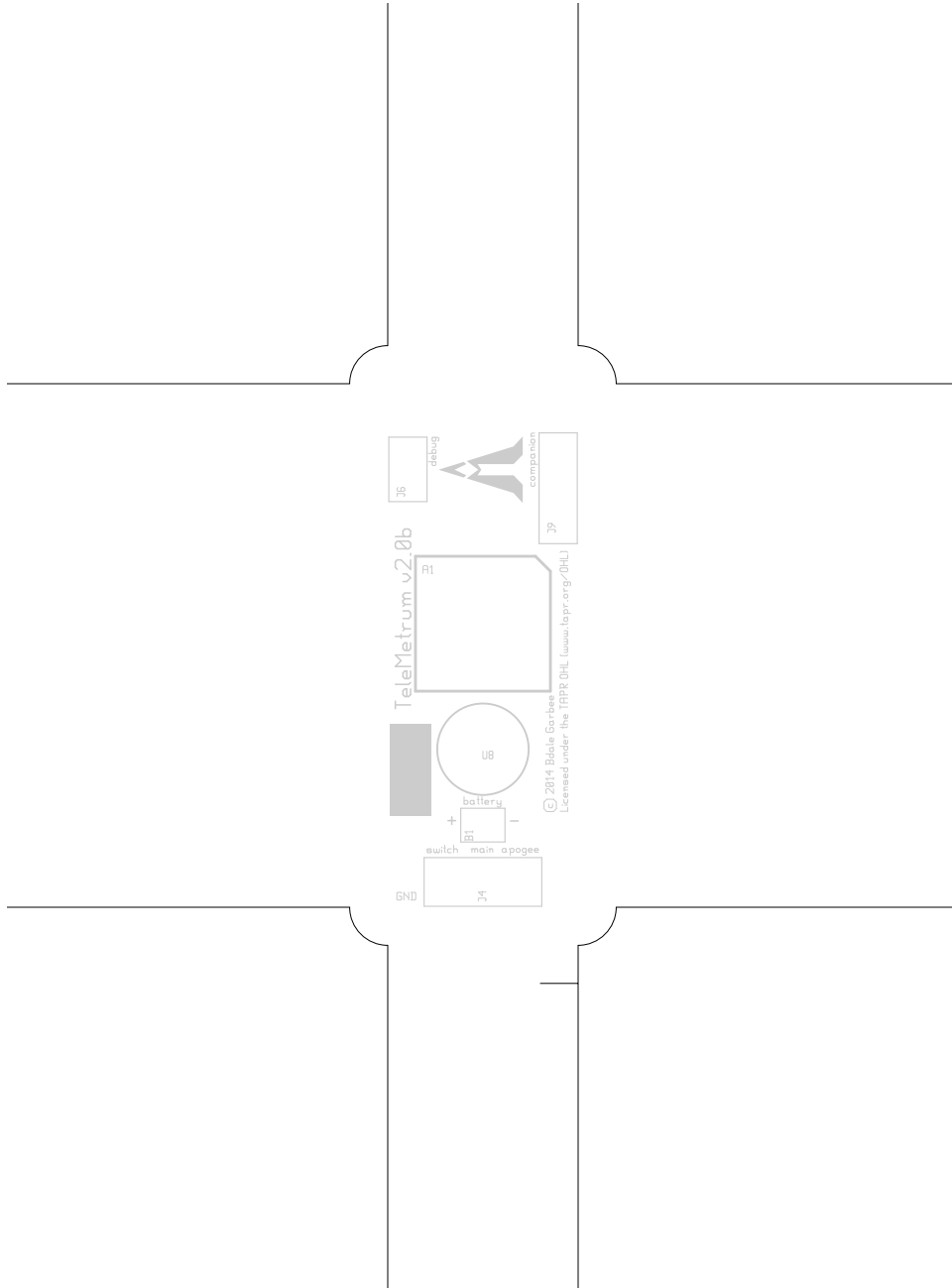


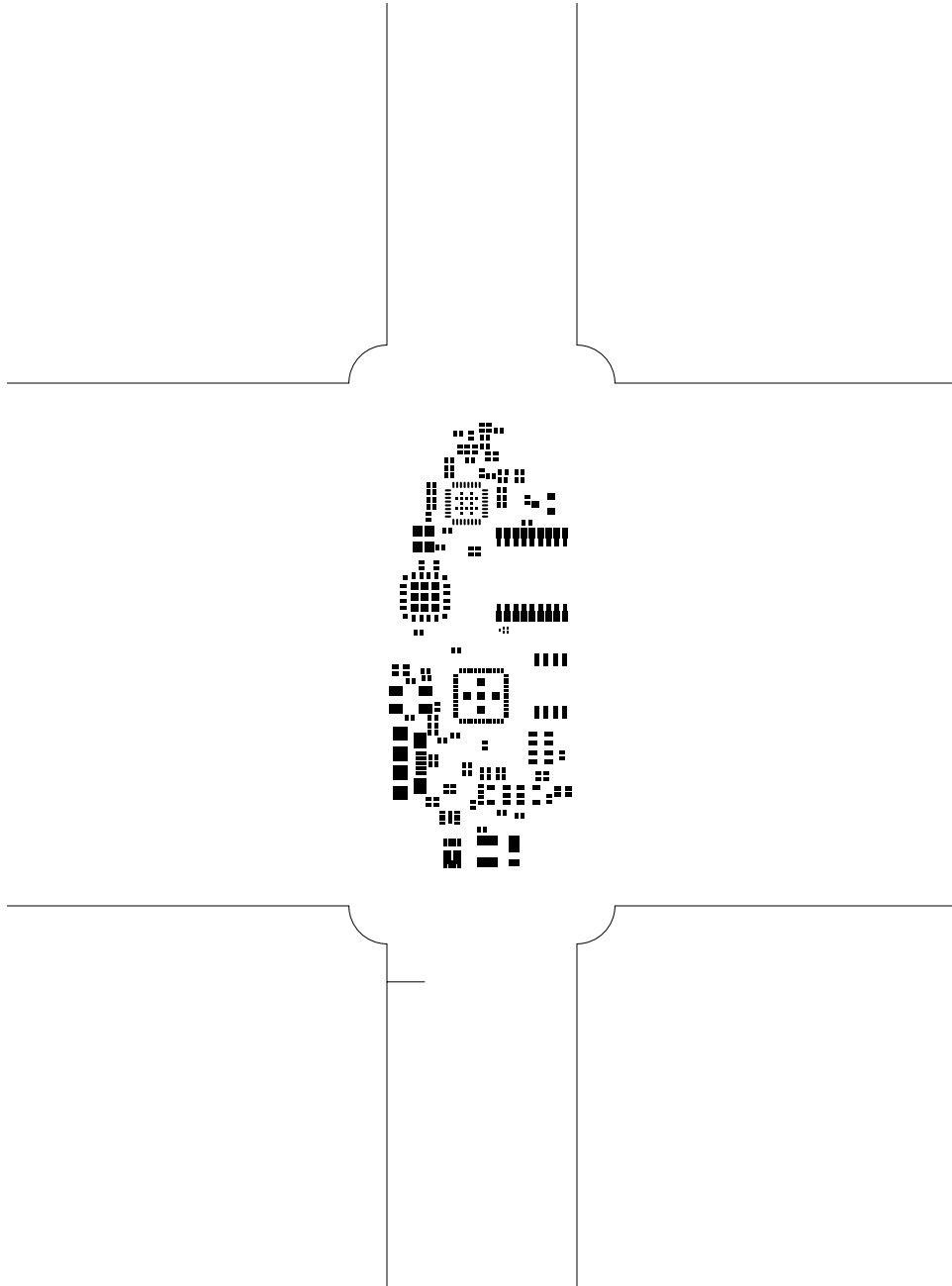


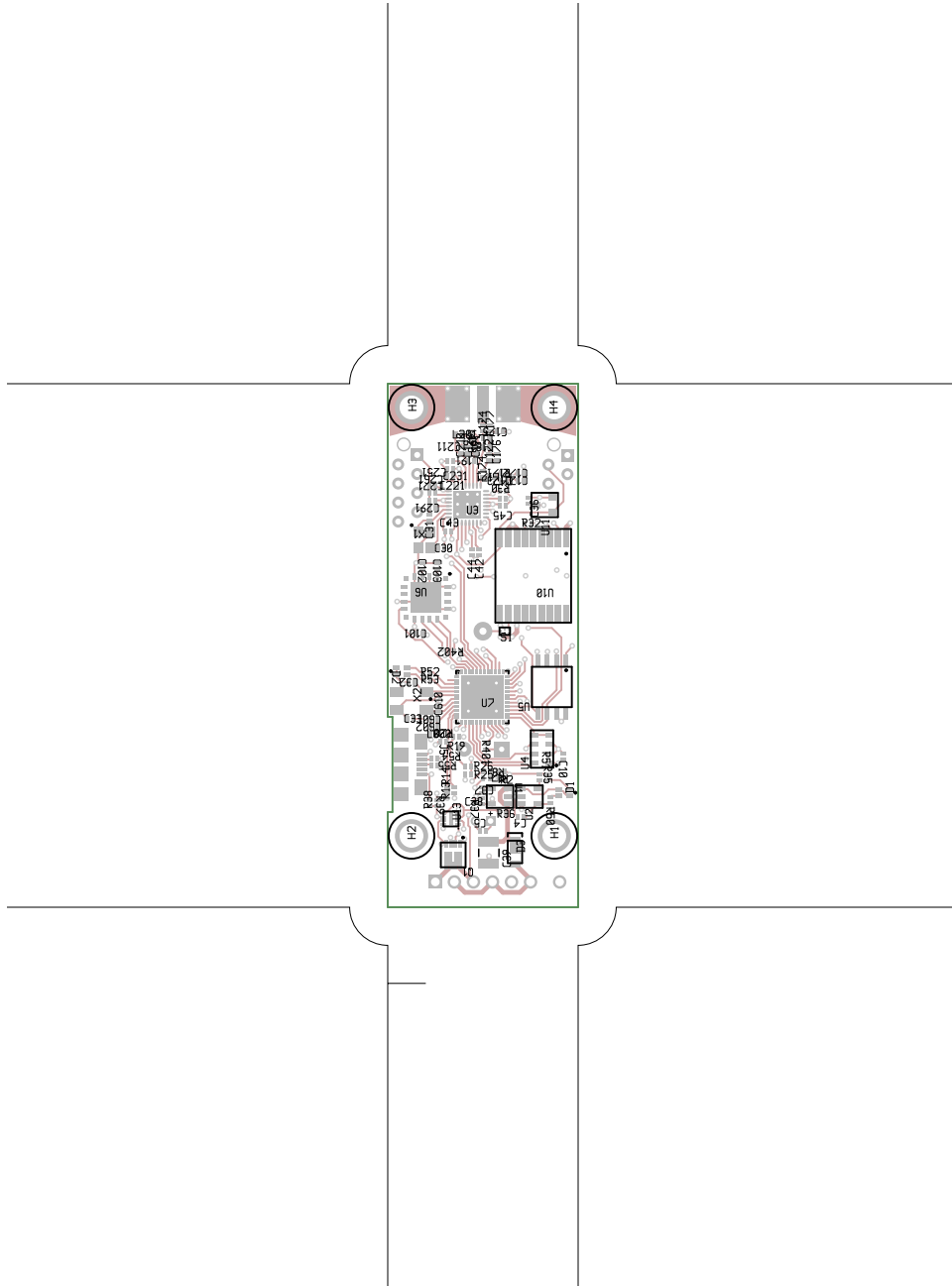


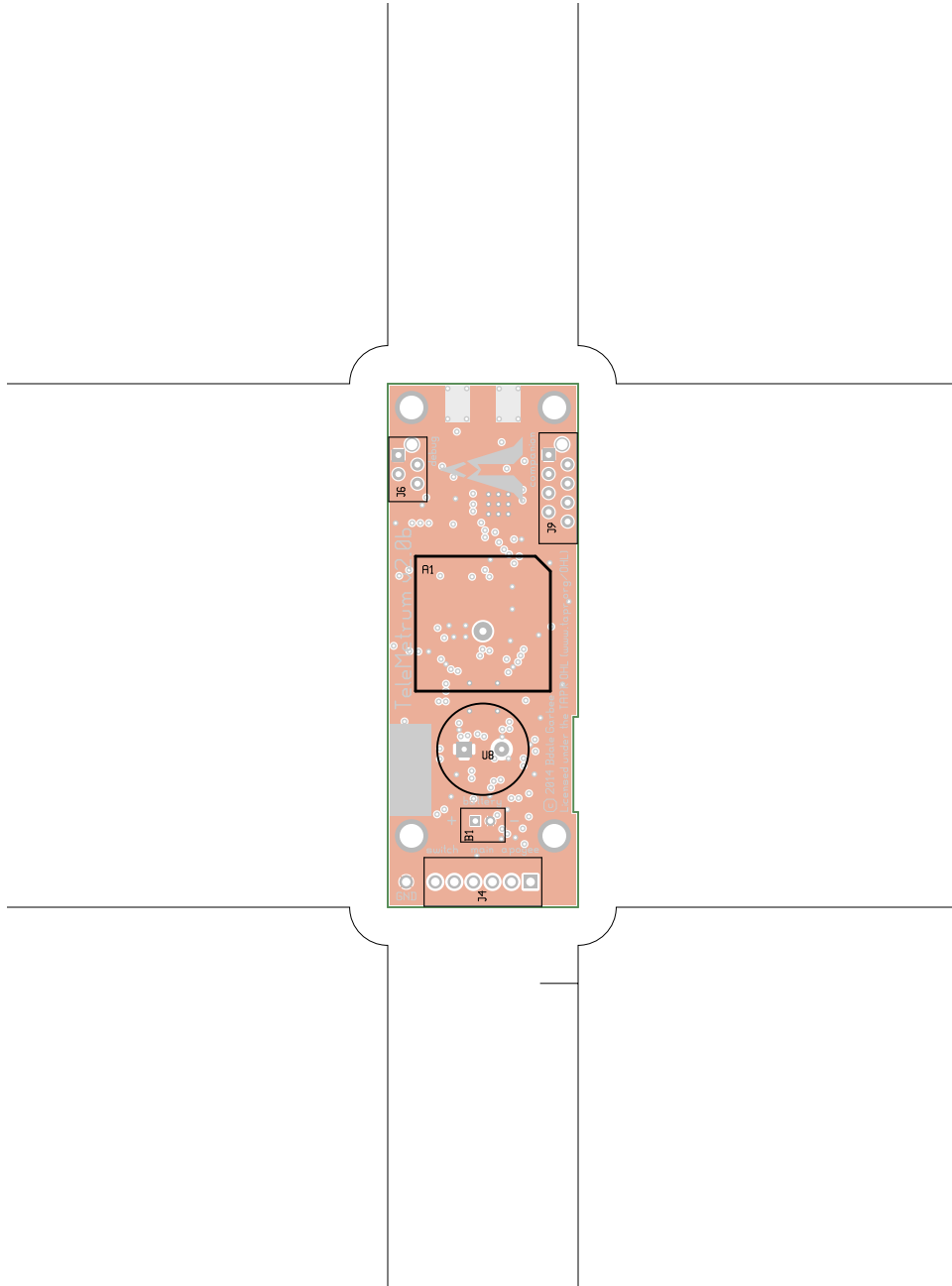










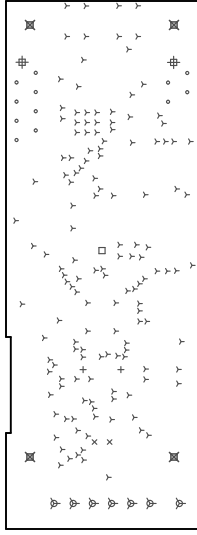


TeleMetrum, bottomassembly (mirrored), scale = 1:1.000
telemetrum.pcb

There are 8 different drill sizes used in this layout, 172 holes total

Symbol	Diam. (Inch)	Count	Plated?
Y	0.015	142	YES
+	0.028	2	YES
x	0.030	2	YES
o	0.032	12	YES
□	0.037	1	YES
ψ	0.045	7	YES
#	0.059	2	YES
⊗	0.125	4	YES

Title: TeleMetrum - Fabrication Drawing
 Author: Bdale Garbee
 Date: Wed May 8 22:52:56 2019 UTC



Board outline is the centerline of this path