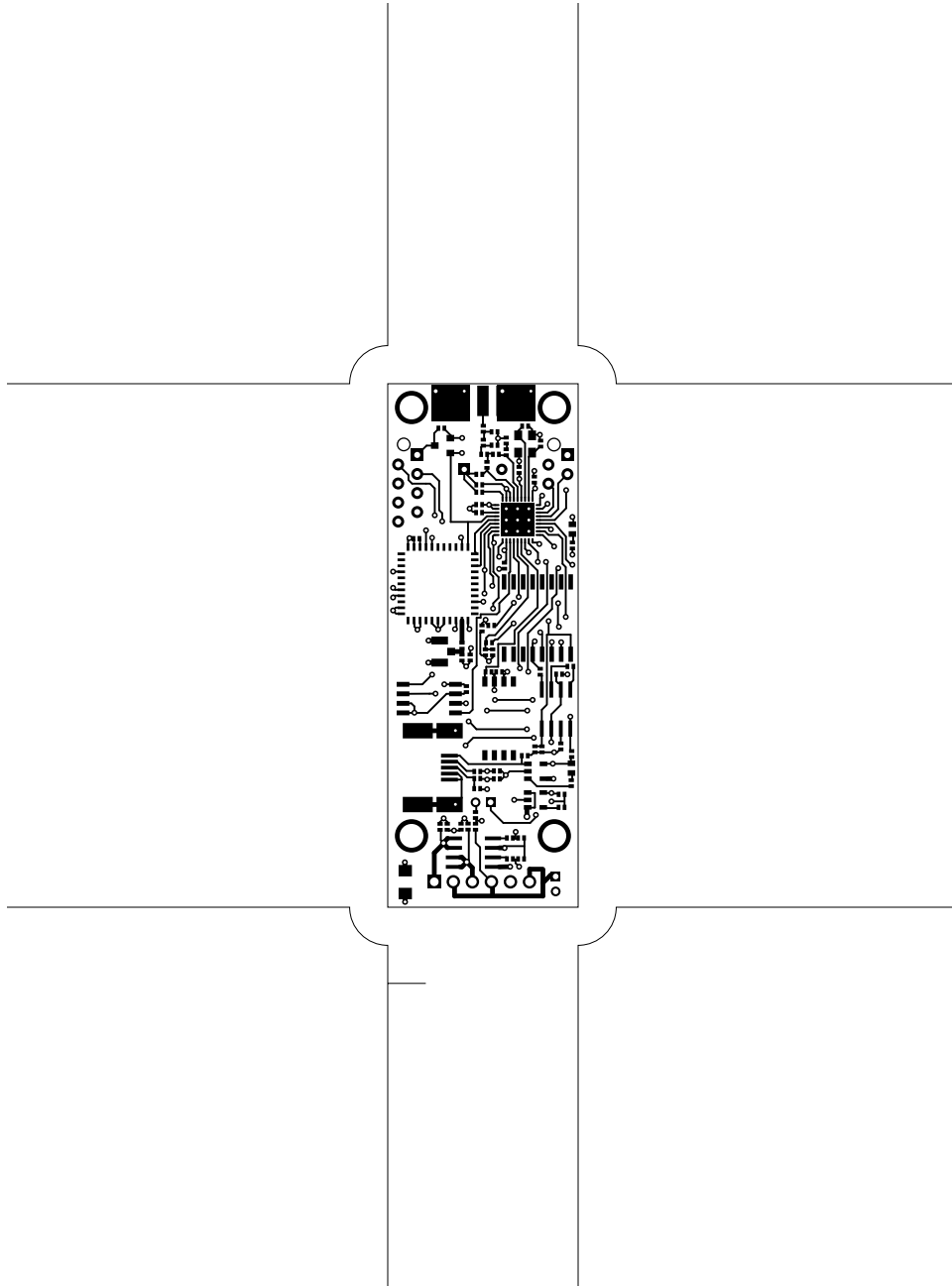
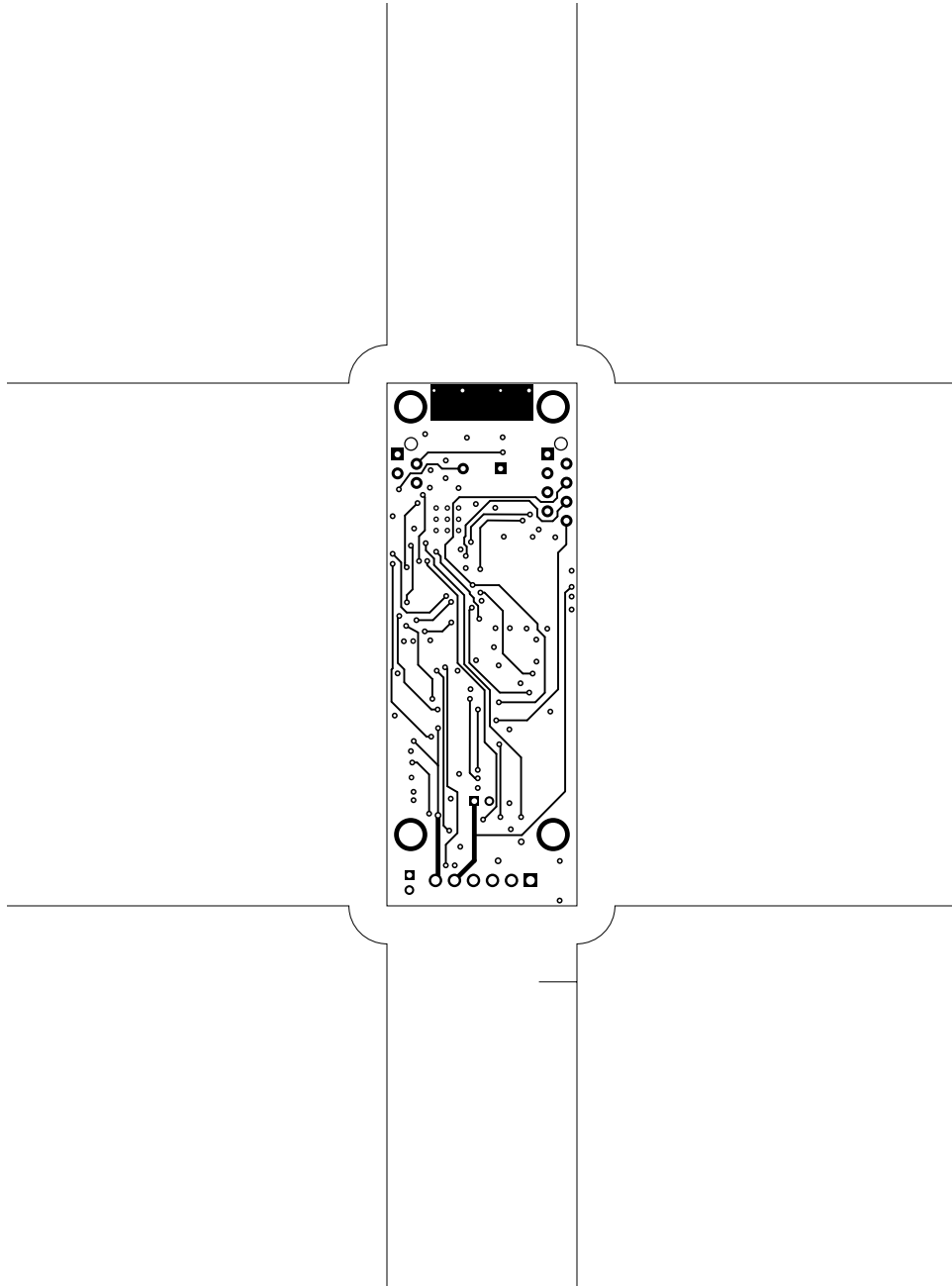
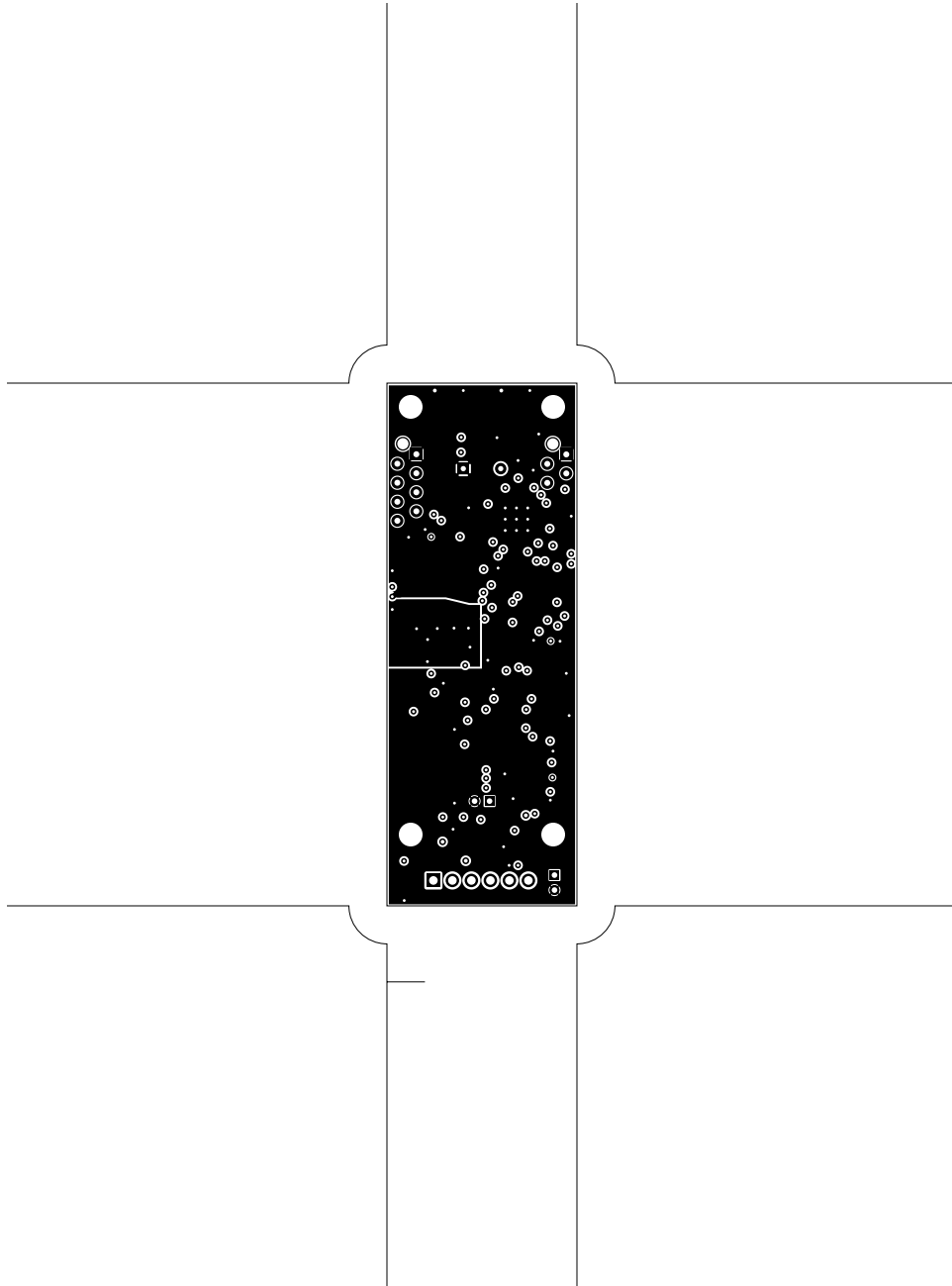


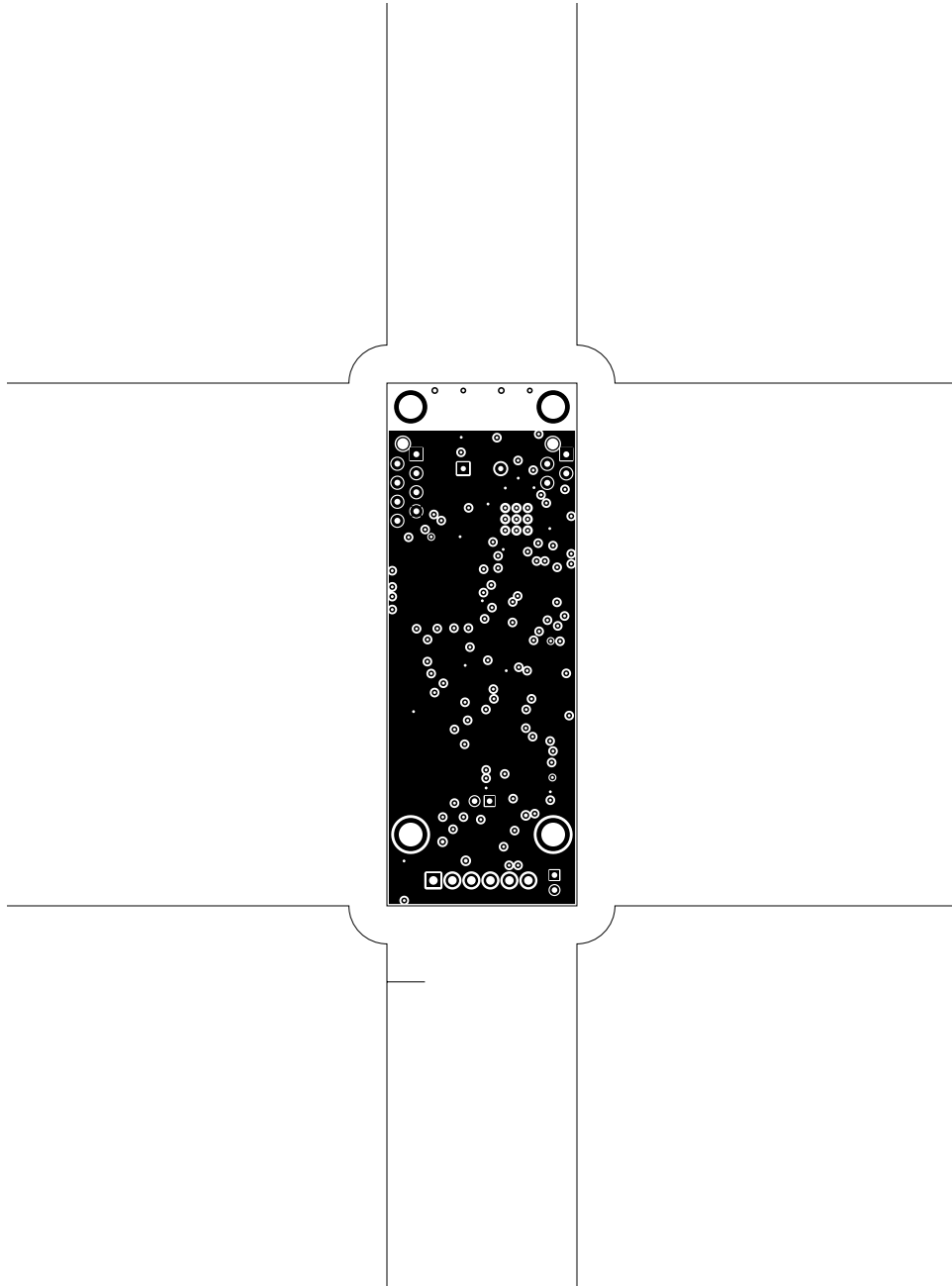
1. Table of Contents (This Page)
Created on Wed Jan 19 20:54:16 2011

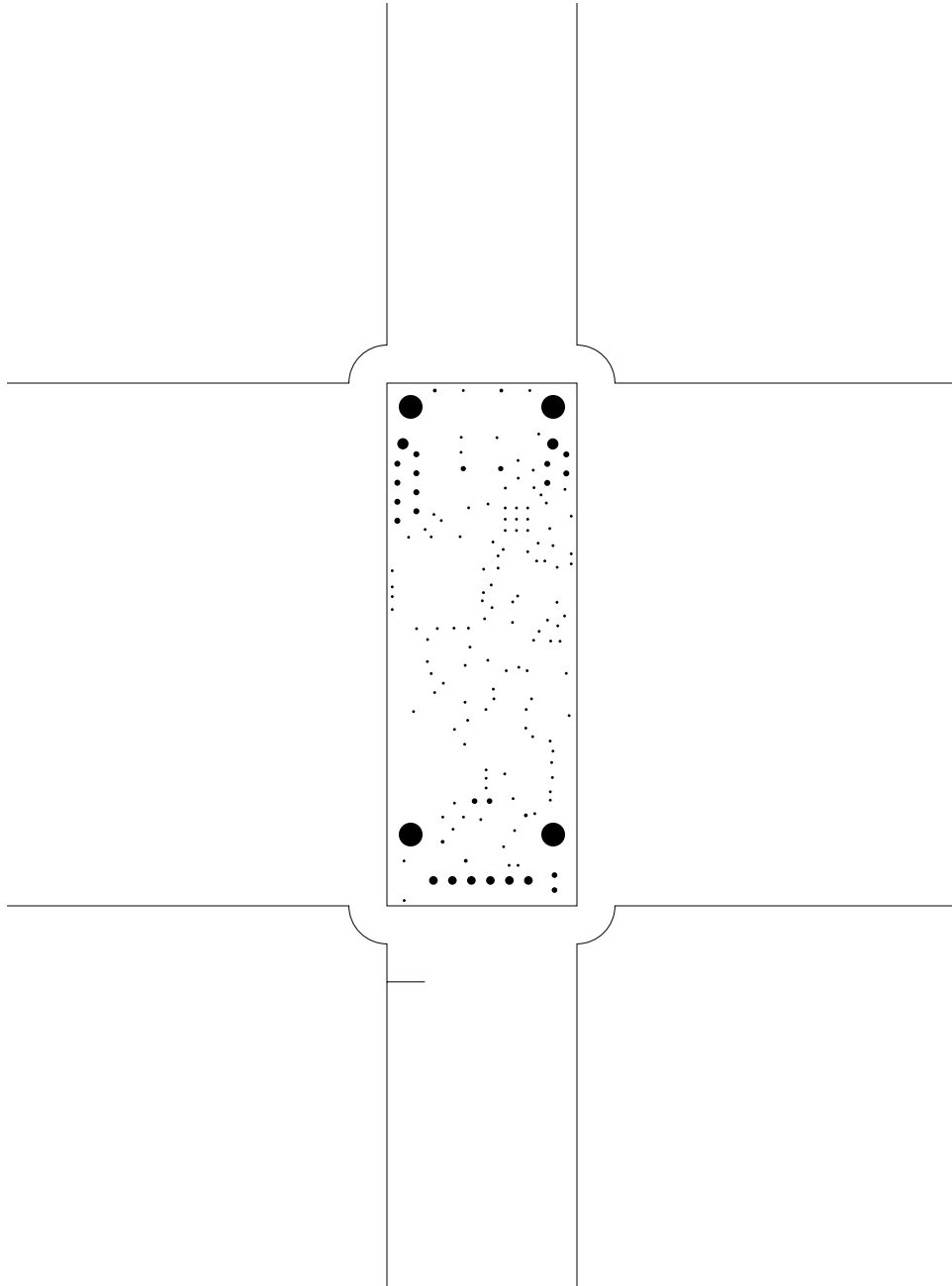
2. top
3. bottom
4. GND plane
5. power plane
6. plated-drill
7. componentmask
8. soldermask
9. topsilk
10. bottomsilk
11. toppaste
12. topassembly
13. bottomassembly
14. fab

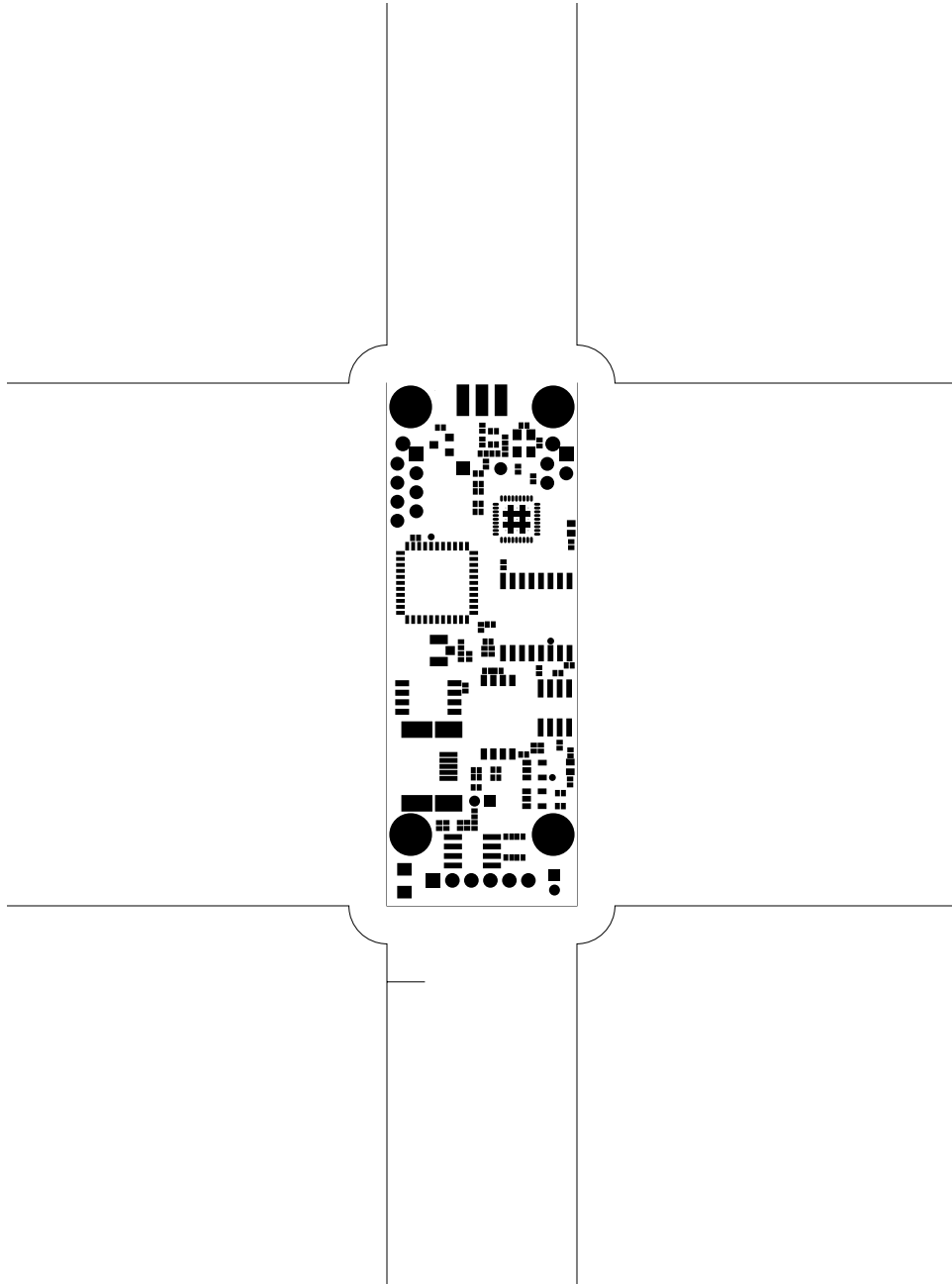


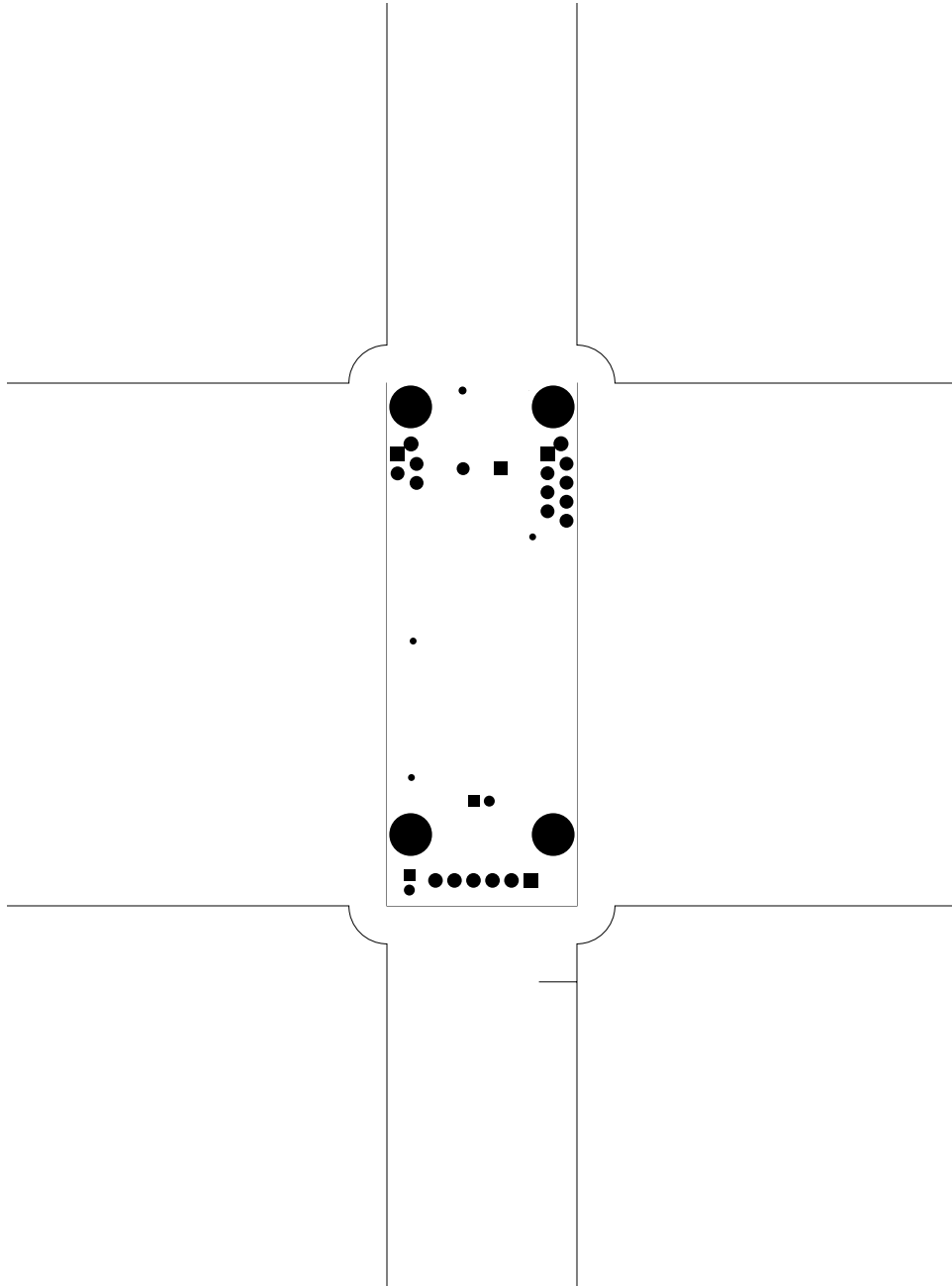


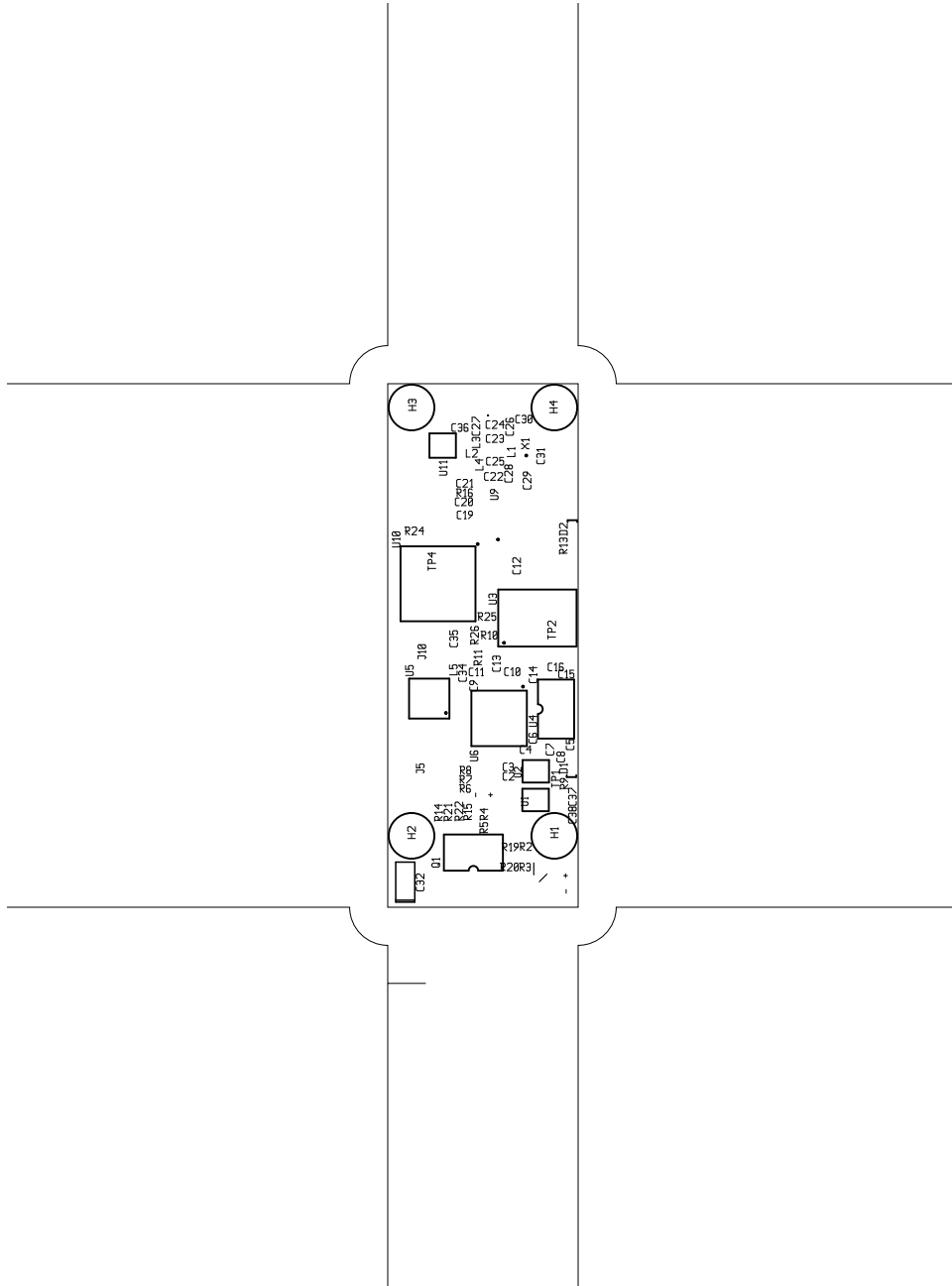


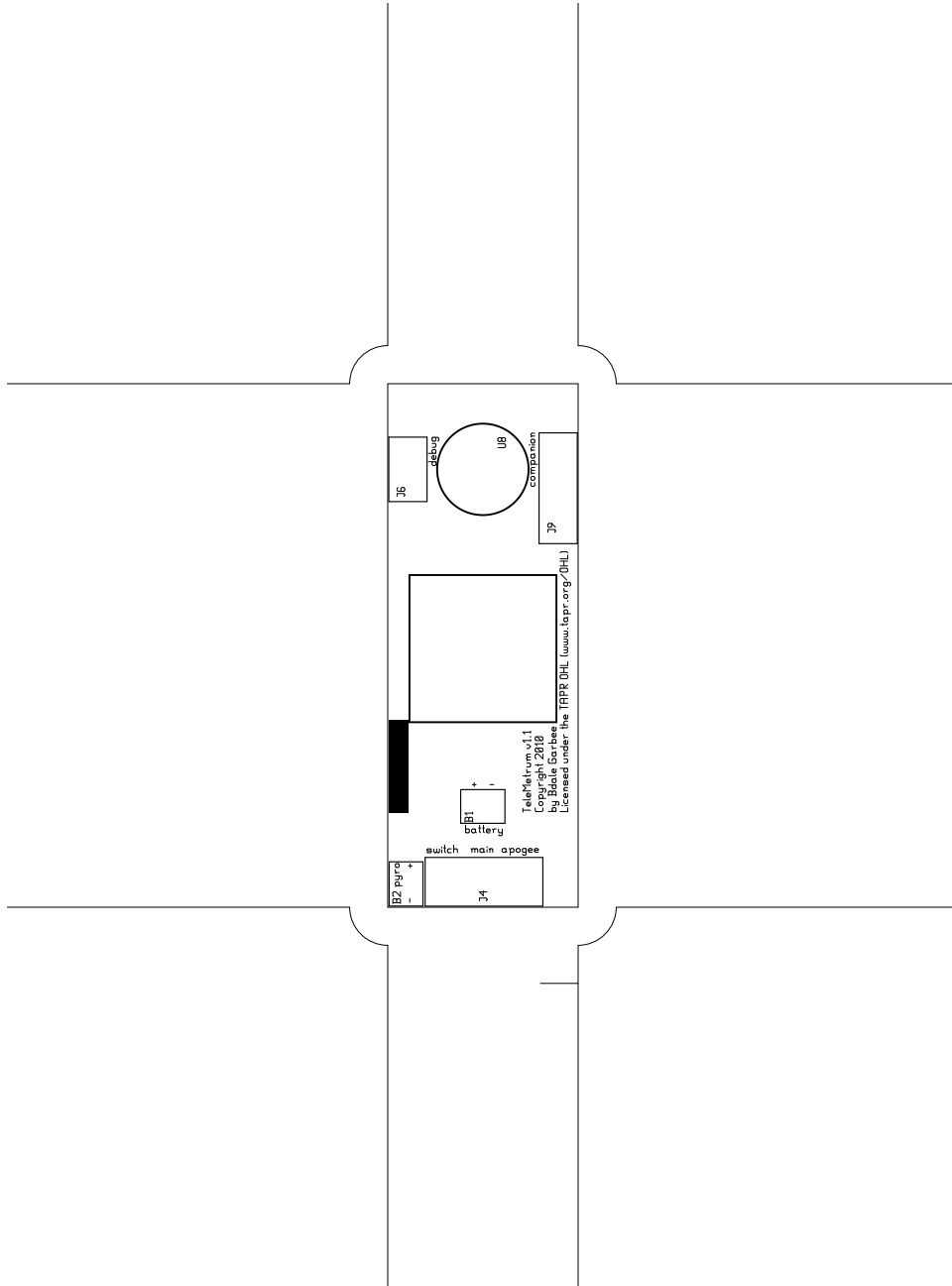


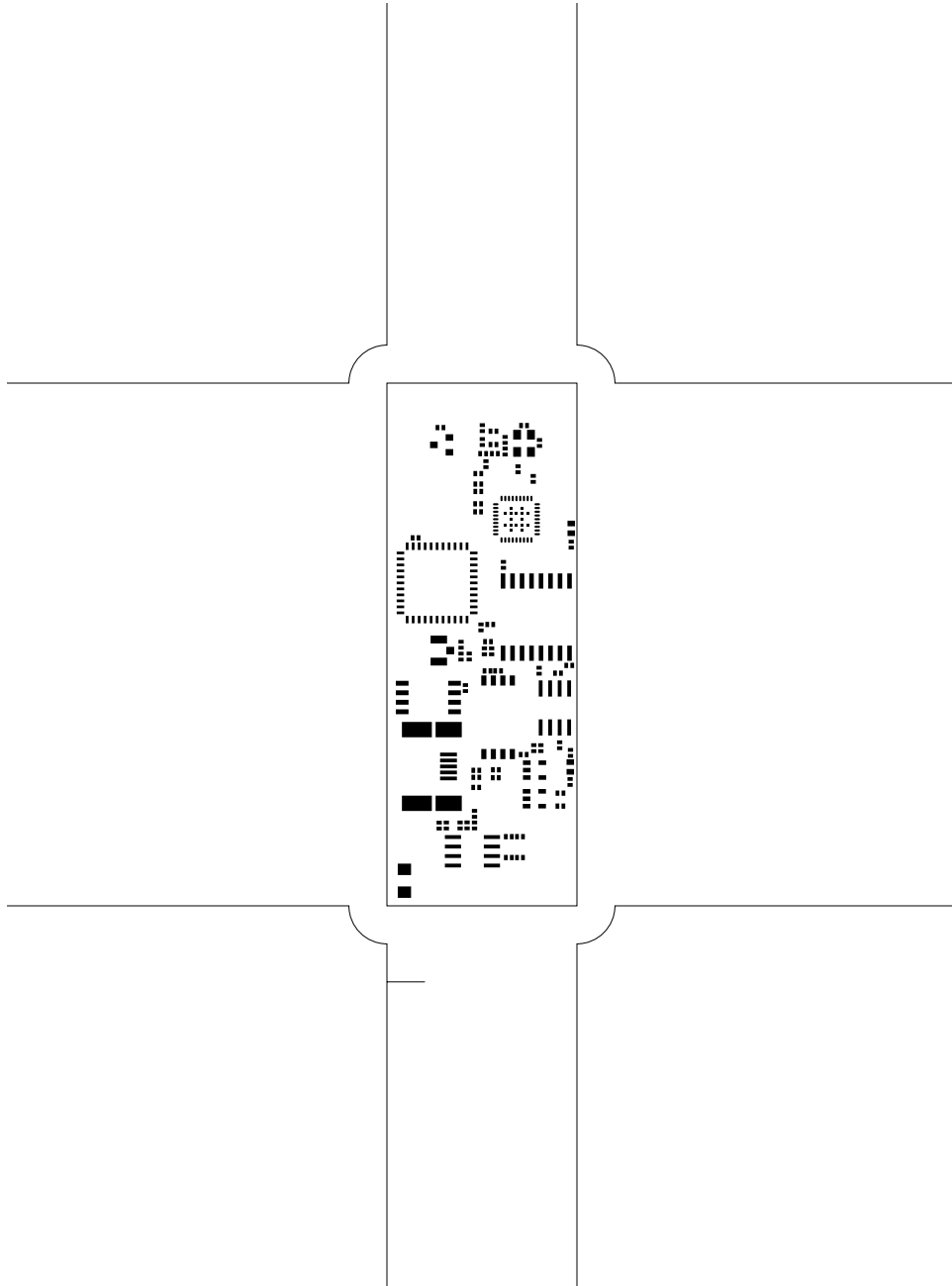


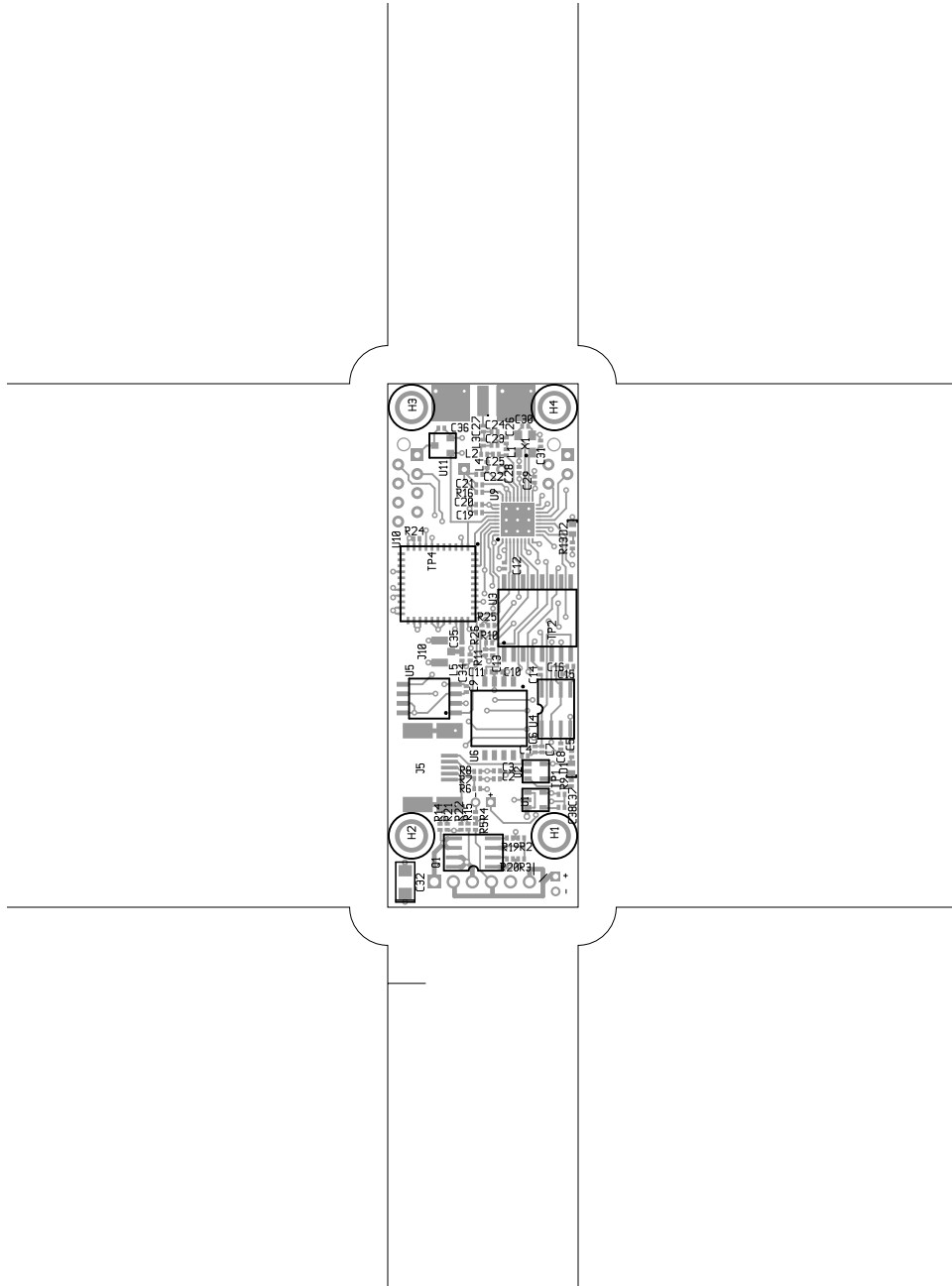




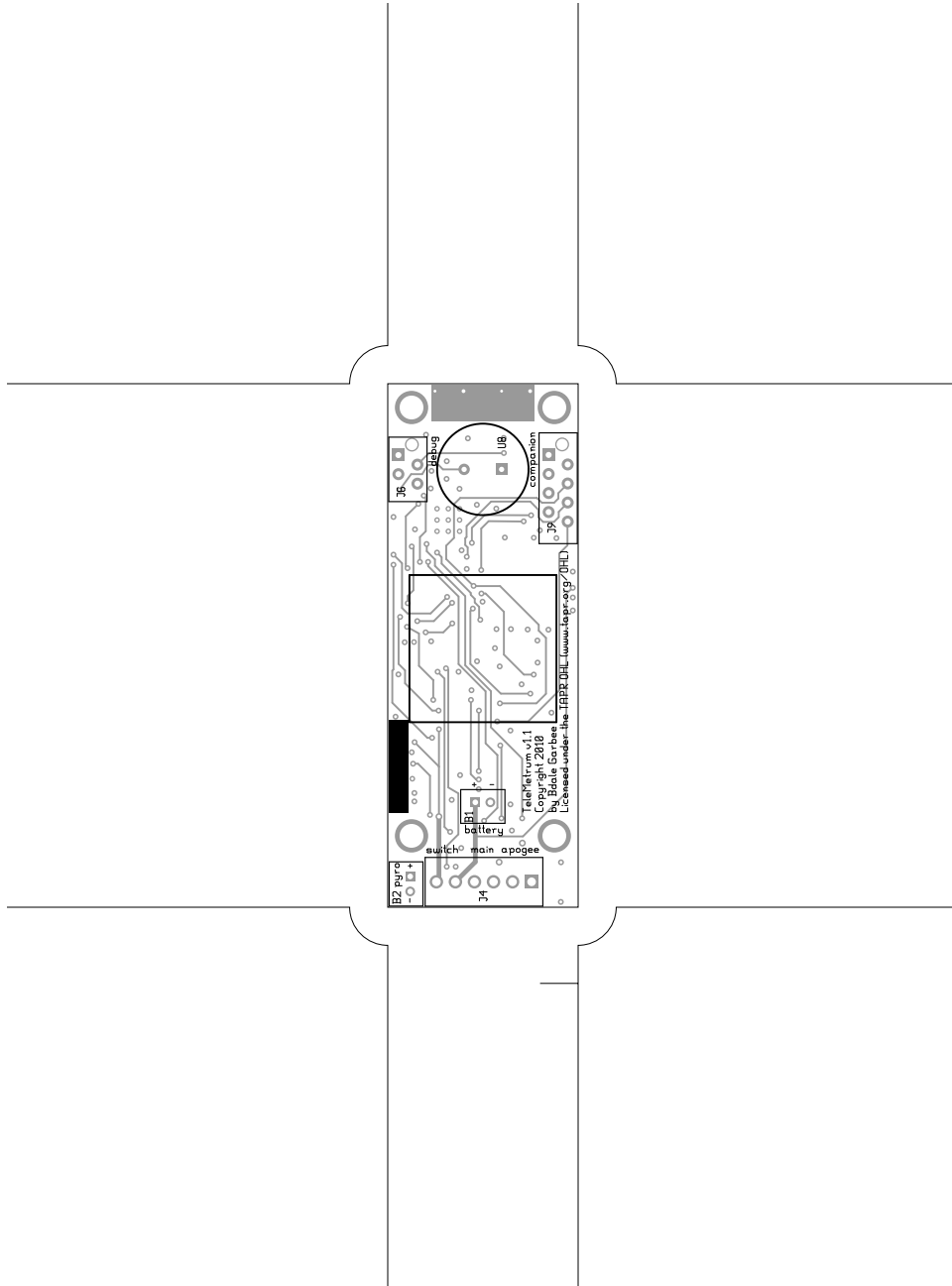








TeleMetrum, frontassembly, scale = 1:1.000
telemetrum.pcb

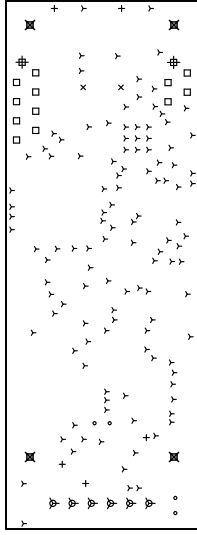


Telemetry, backassembly (mirrored), scale = 1:1.000
telemetry.pcb

There are 8 different drill sizes used in this layout, 153 holes total

| Symbol | Diam. (Inch) | Count | Plated? |
|--------|--------------|-------|---------|
| Y | 0.015 | 118 | YES |
| + | 0.020 | 5 | YES |
| x | 0.028 | 2 | YES |
| o | 0.030 | 4 | YES |
| □ | 0.032 | 12 | YES |
| ψ | 0.045 | 6 | YES |
| # | 0.059 | 2 | YES |
| ⊗ | 0.125 | 4 | YES |

Title: TeleMetrum - Fabrication Drawing
 Author: Bdale Garbee
 Date: Thu Jan 20 03:54:16 2011 UTC
 Maximum Dimensions: 2750 mils wide, 1000 mils high



Board outline is the centerline of this 10 mil rectangle - 0.0 to 2750.1000 mils