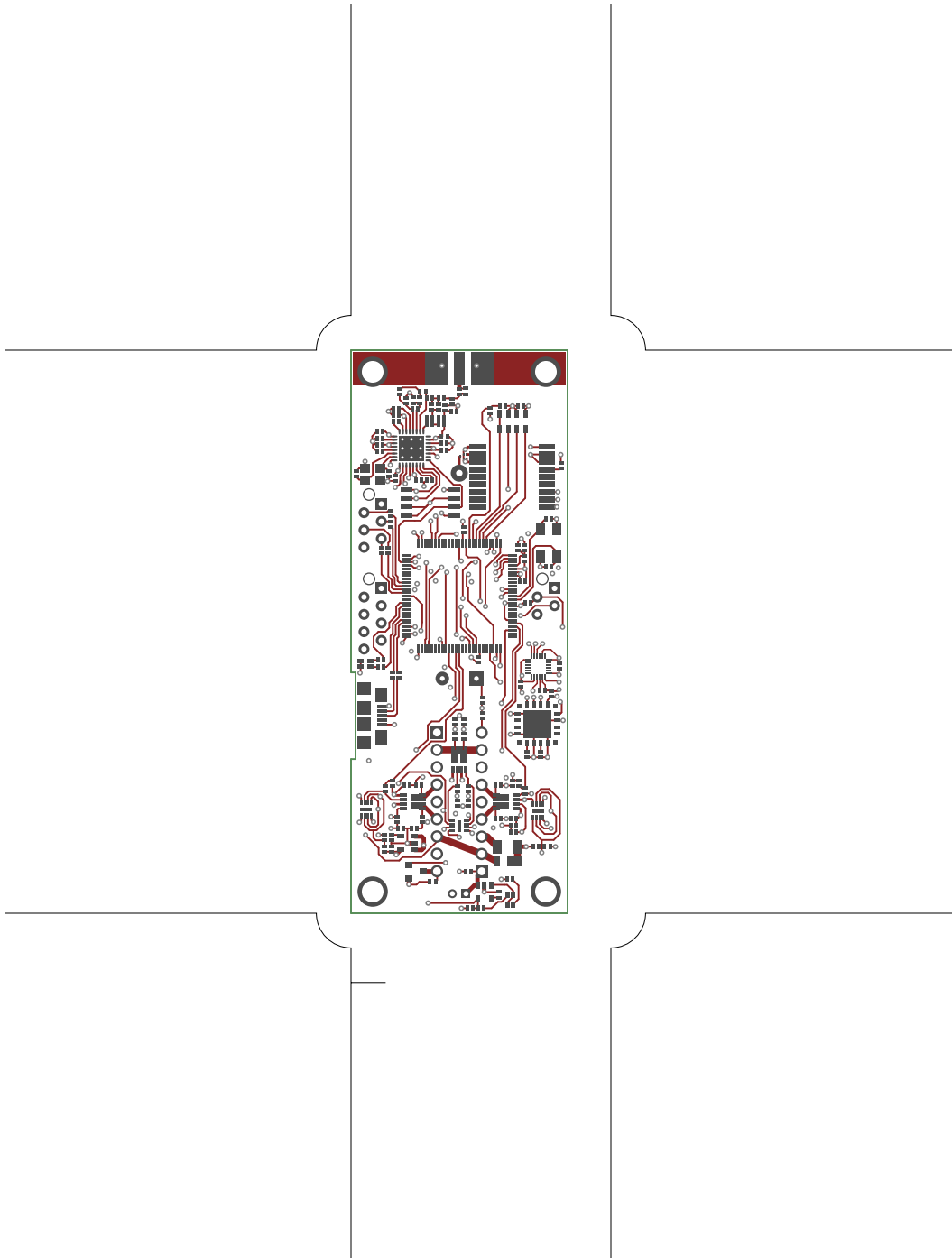
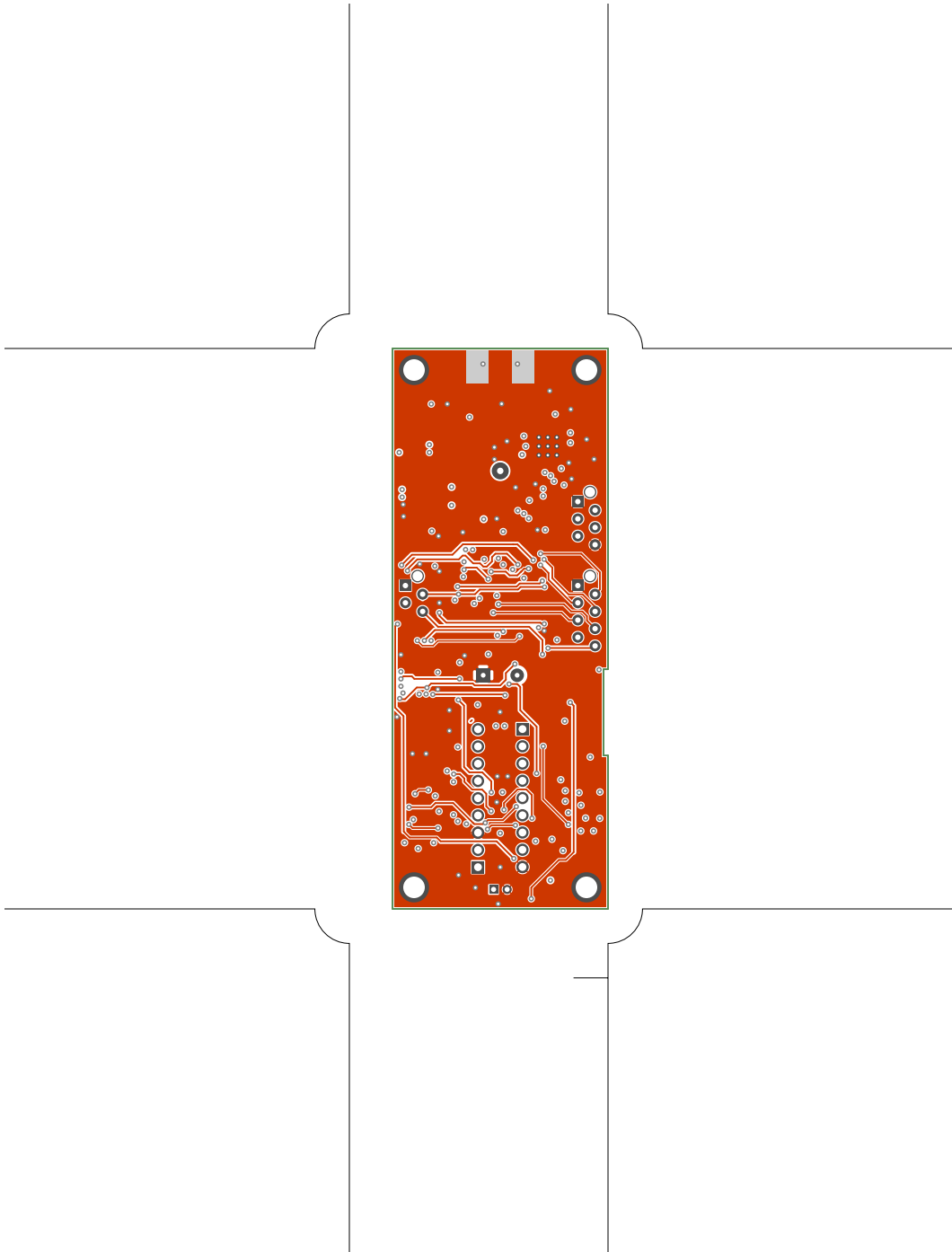


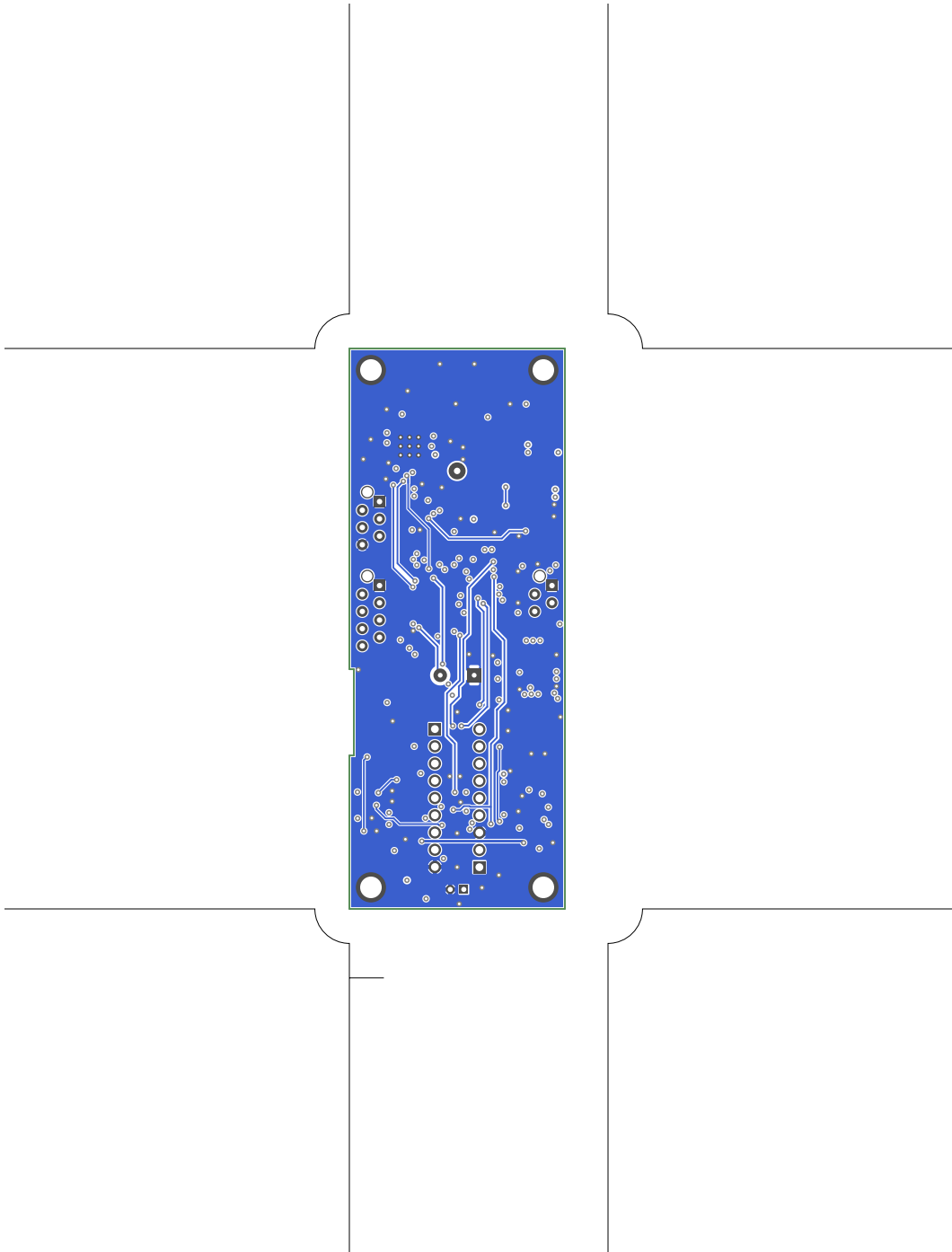
1. Table of Contents (This Page)

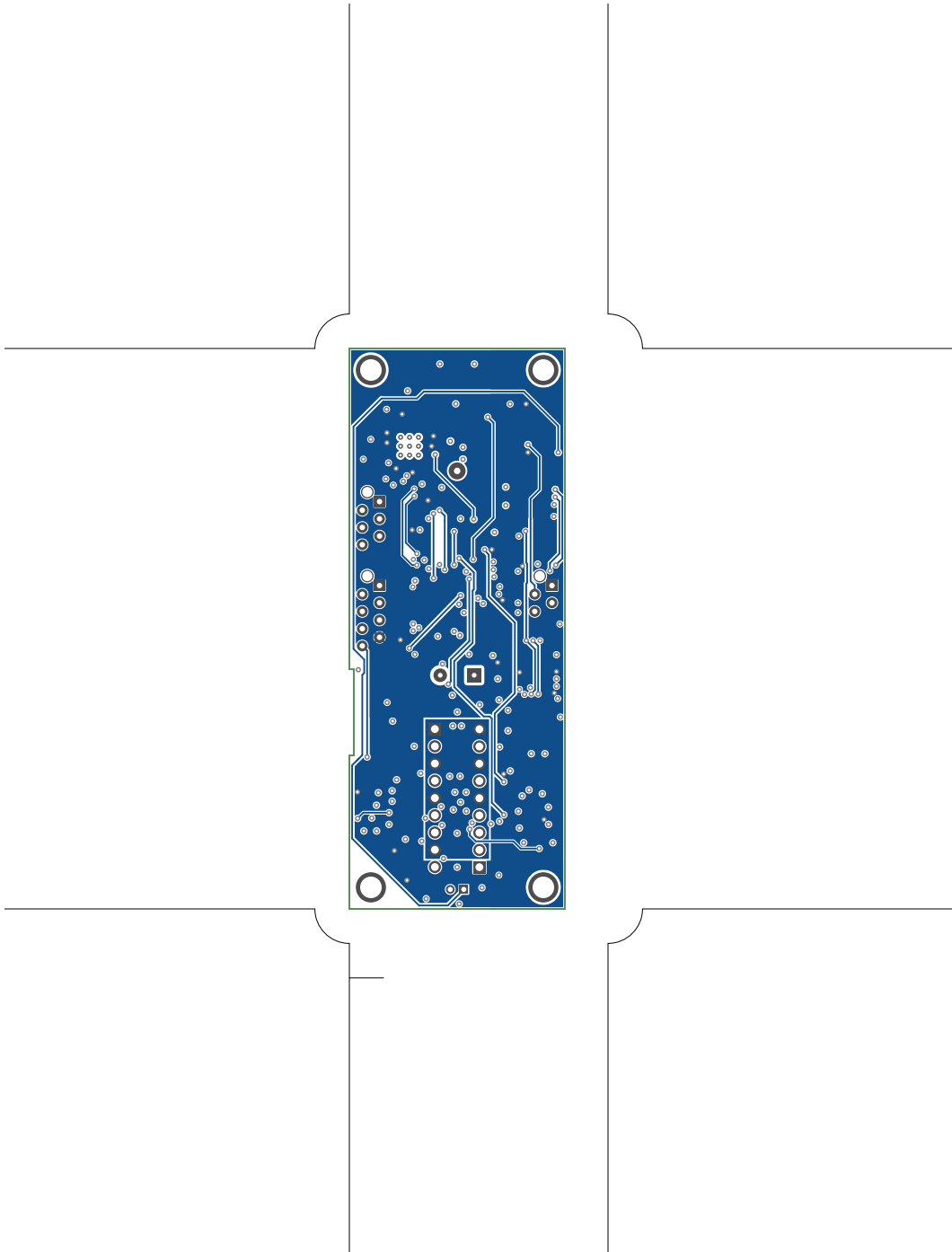
Created on Wed May 8 16:32:25 2019

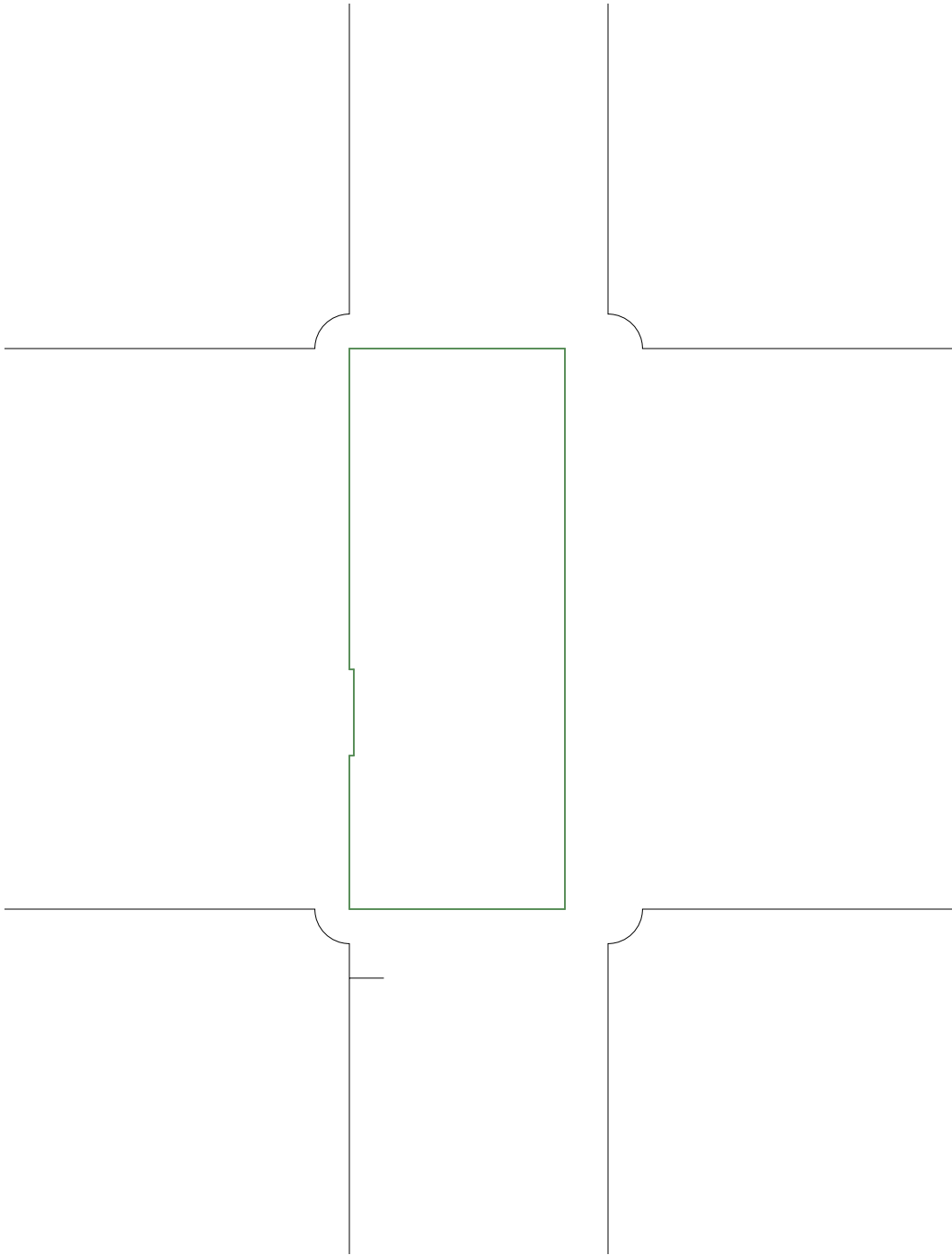
2. top
3. bottom
4. GND plane
5. power plane
6. outline
7. plated-drill
8. componentmask
9. soldermask
10. topsilk
11. bottomsilk
12. toppaste
13. topassembly
14. bottomassembly
15. fab

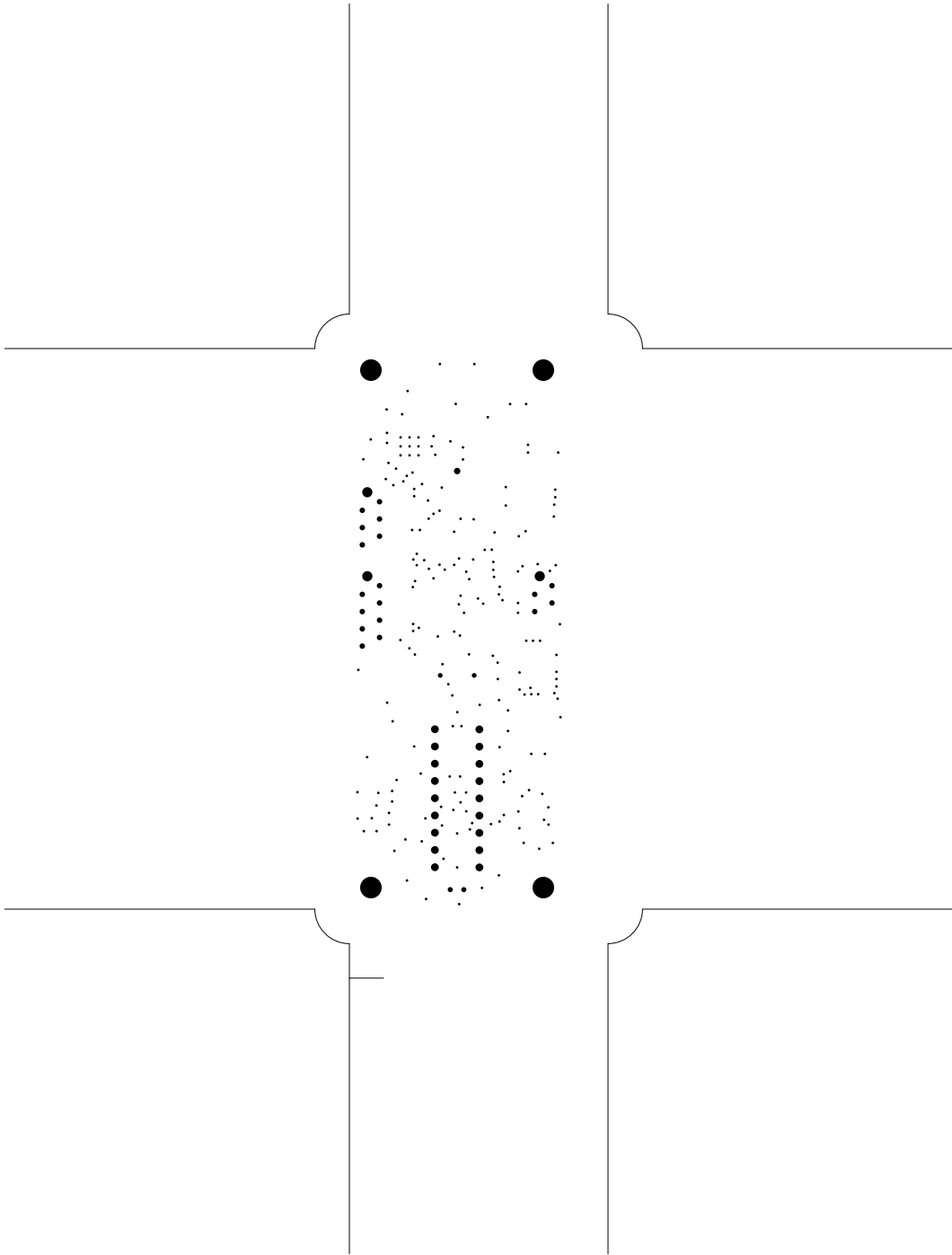


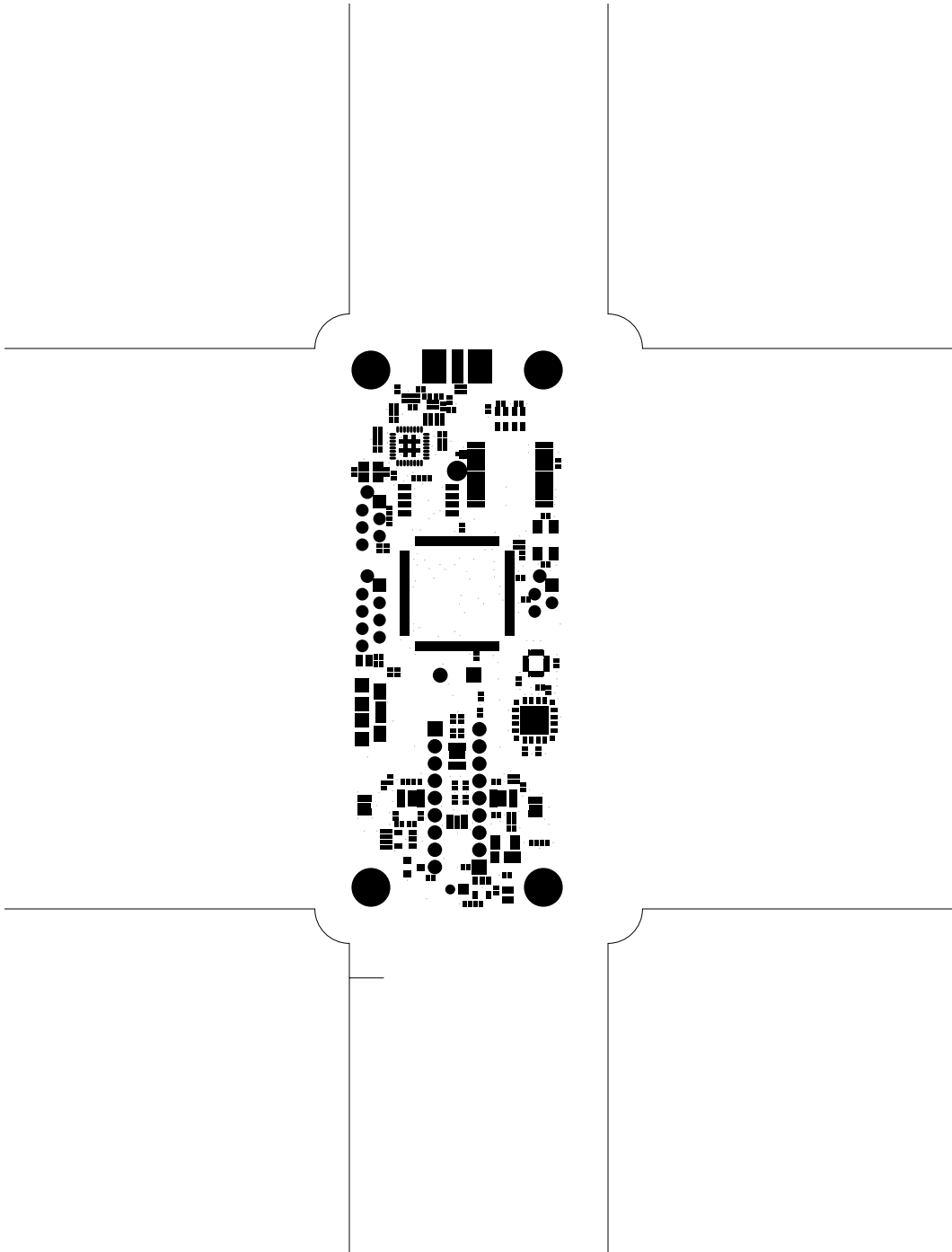


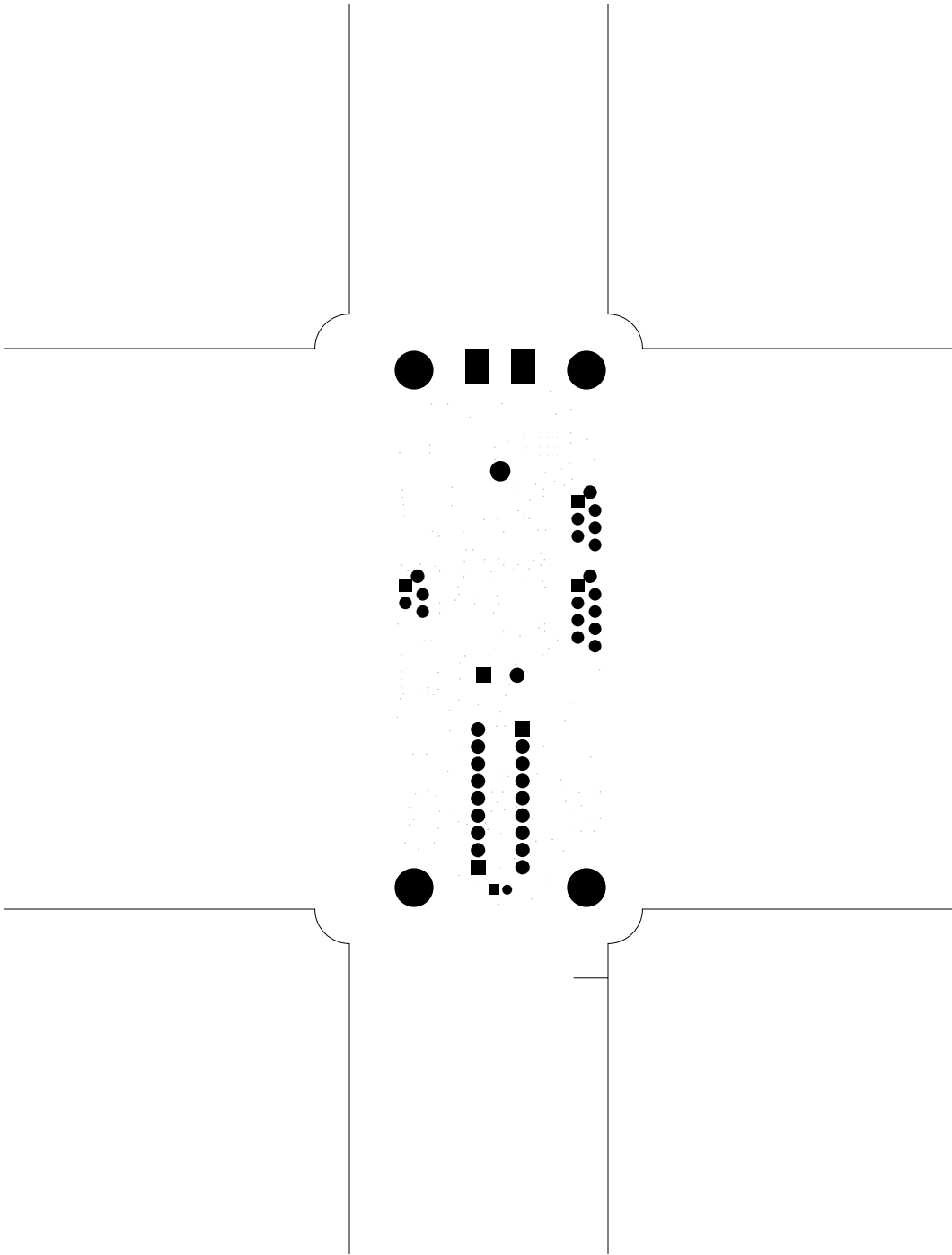


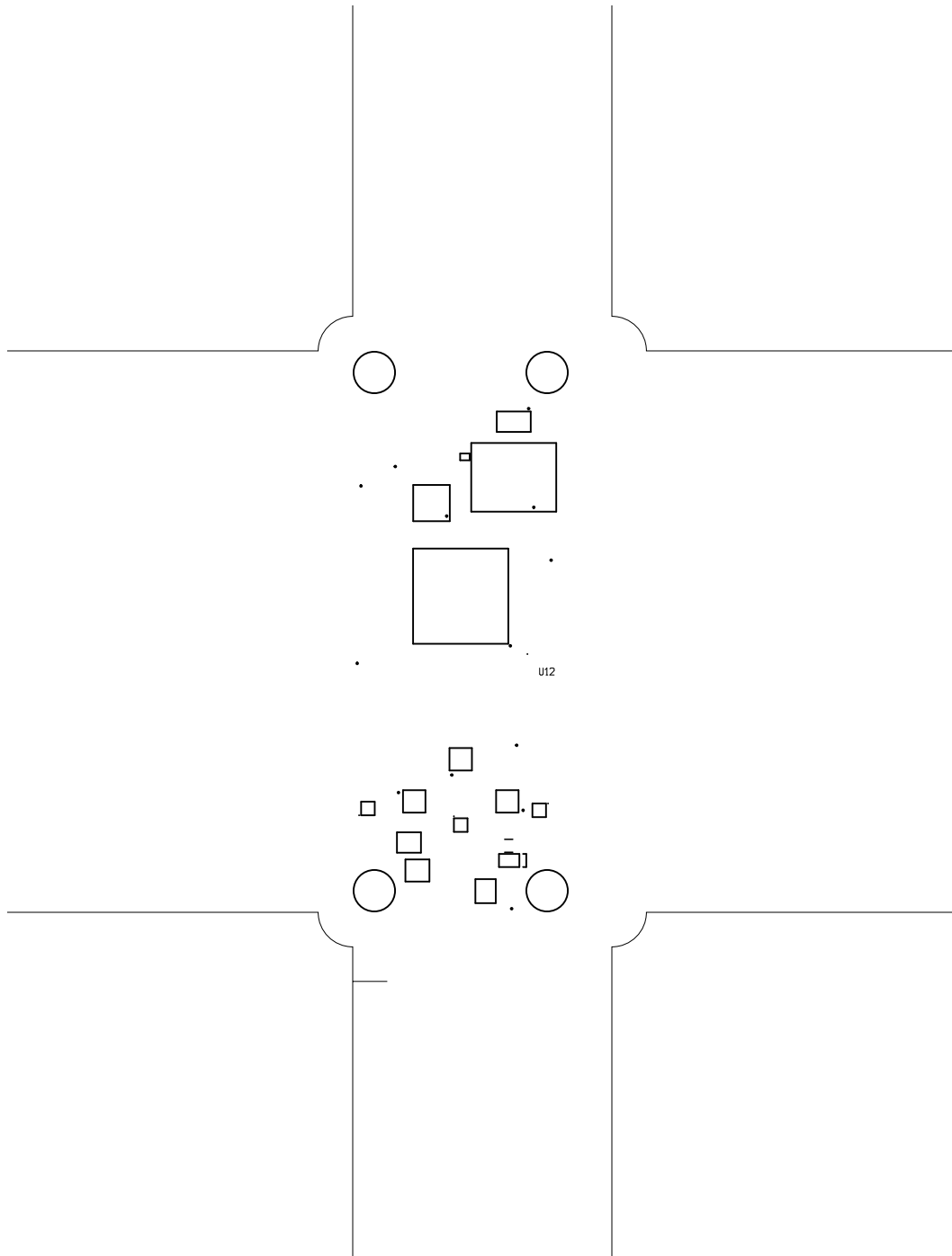


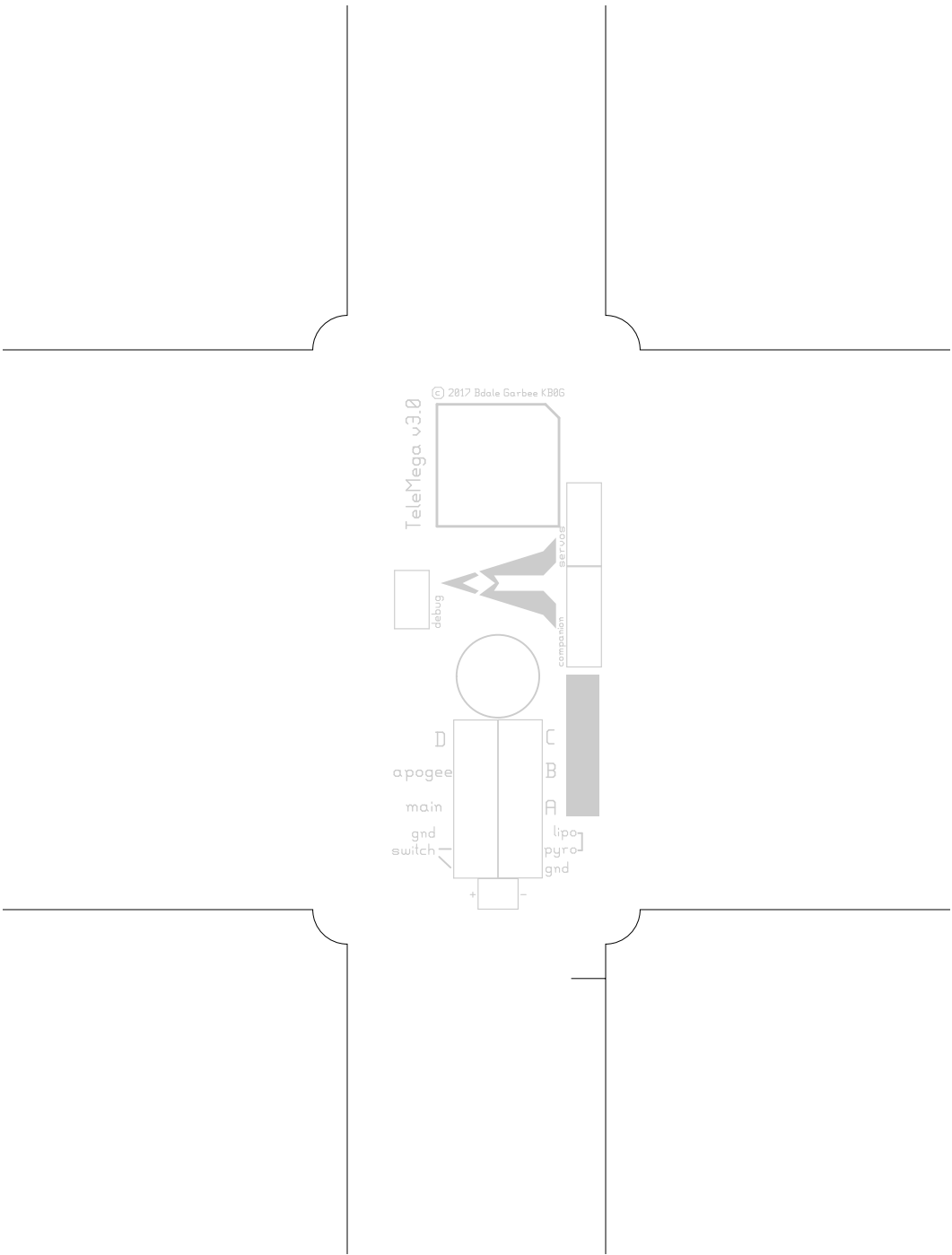




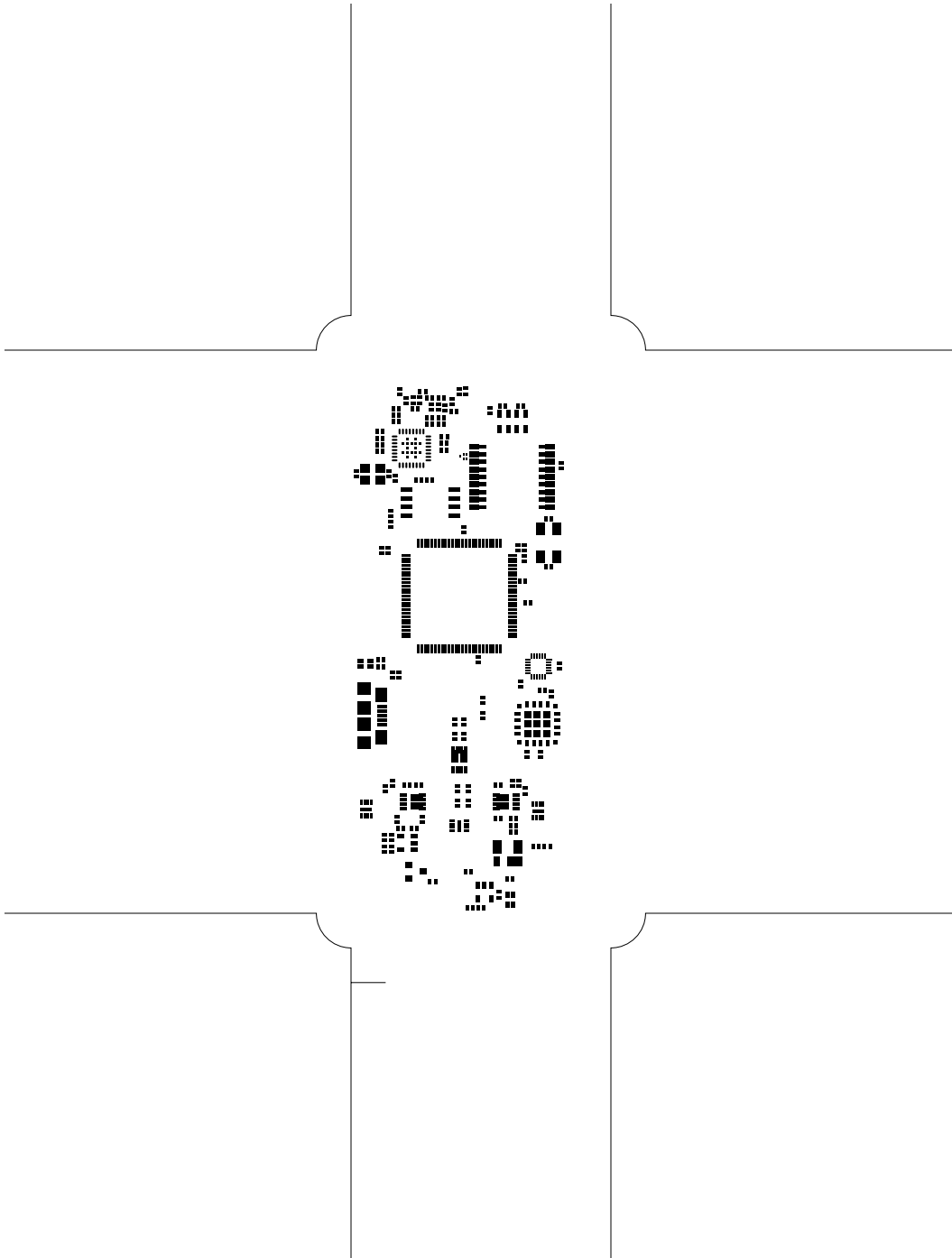


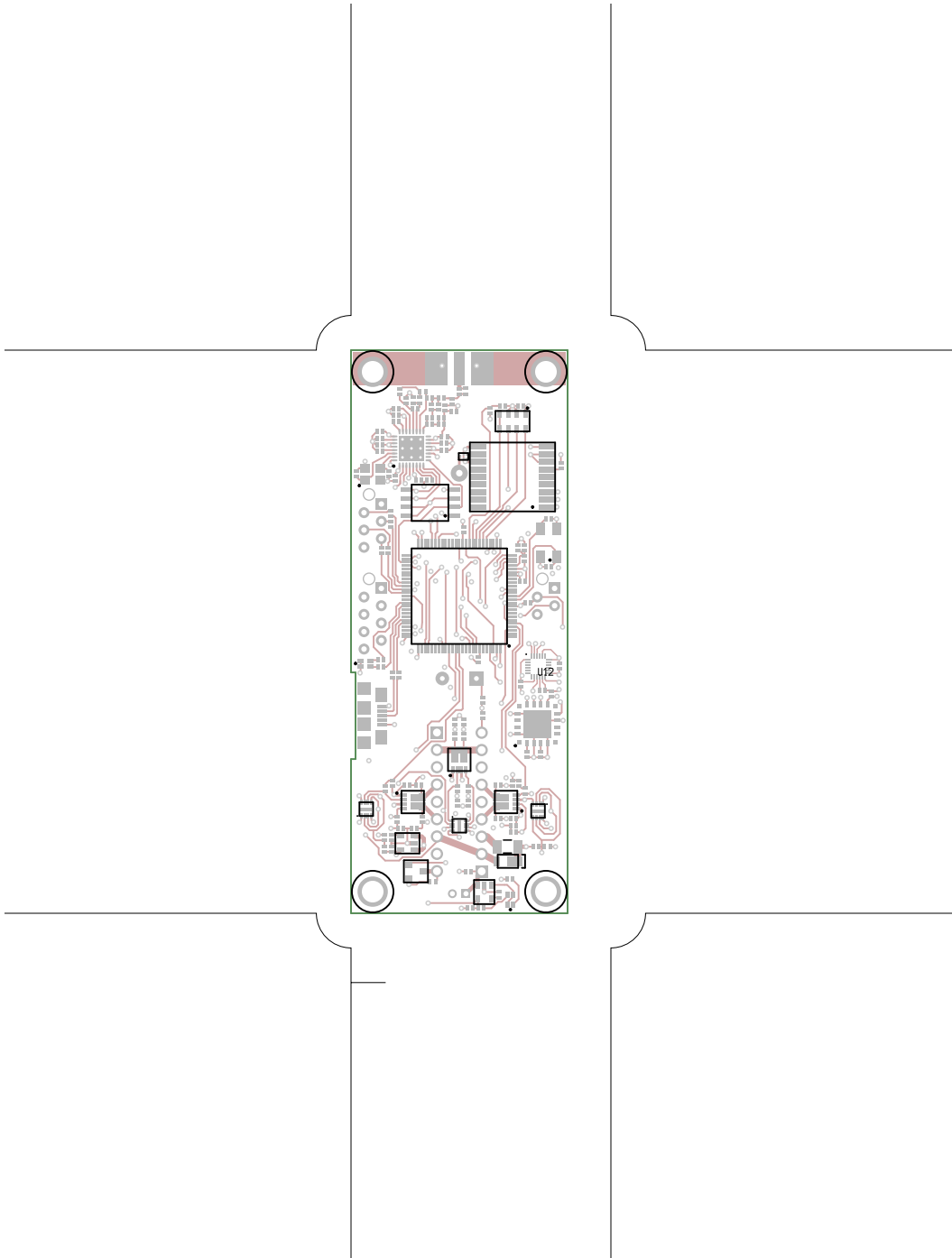


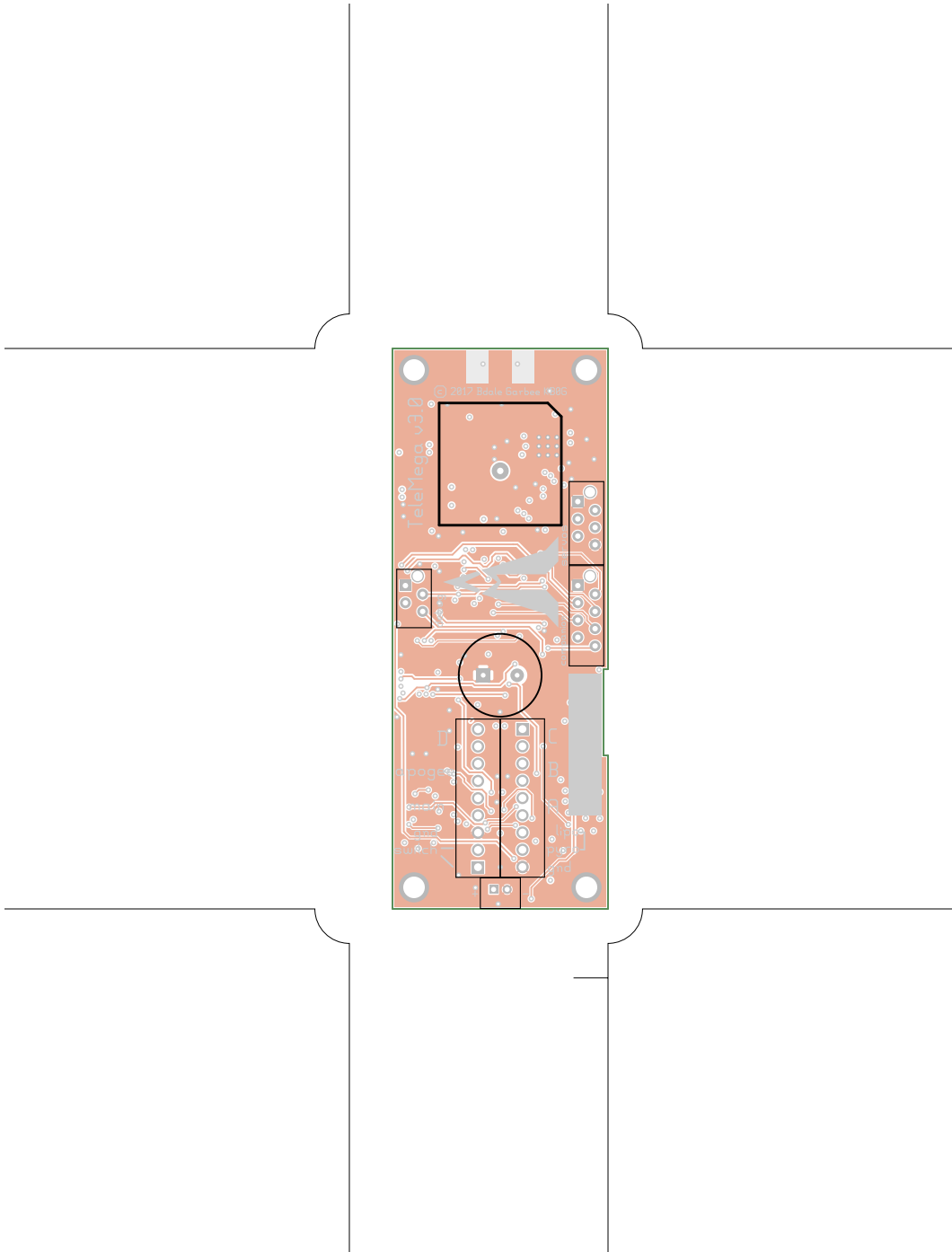




TeleMega, bottomsilk (mirrored), scale = 1:1.000
telemega.pcb





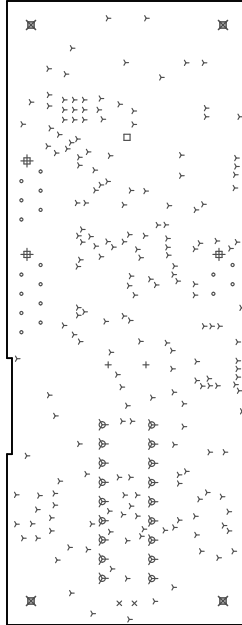


TeleMega, bottomassembly (mirrored), scale = 1:1.000
telemega.pcb

There are 8 different drill sizes used in this layout, 244 holes total.

Symbol	Diam. (Inch)	Count	Plated?
Y	0.015	196	YES
+	0.028	2	YES
x	0.030	2	YES
o	0.032	18	YES
□	0.037	1	YES
ψ	0.045	18	YES
#	0.059	3	YES
⊗	0.125	4	YES

Title: TeleMega - Fabrication Drawing
 Author: Bdale Garbee
 Date: Wed May 8 22:32:26 2019 UTC



Board outline is the centerline of this path