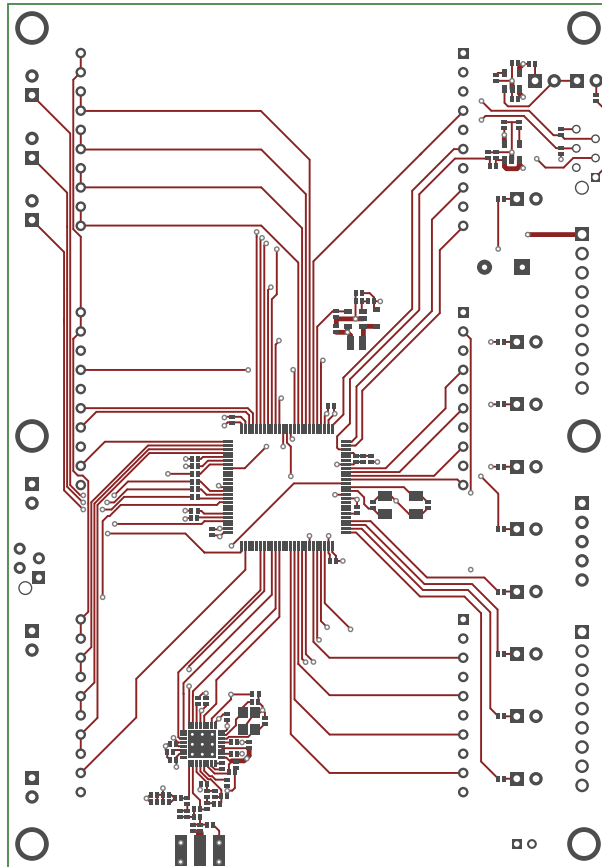
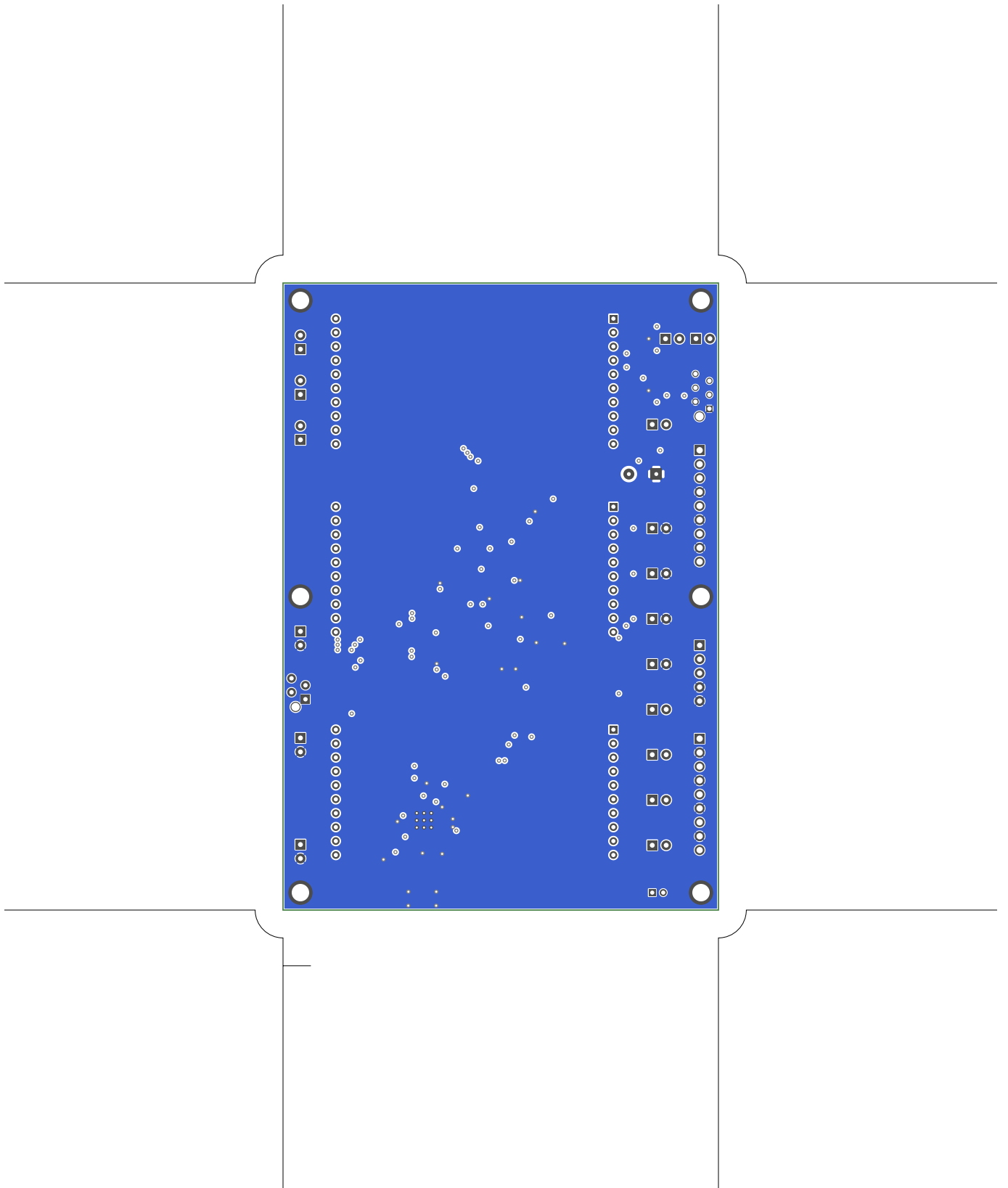


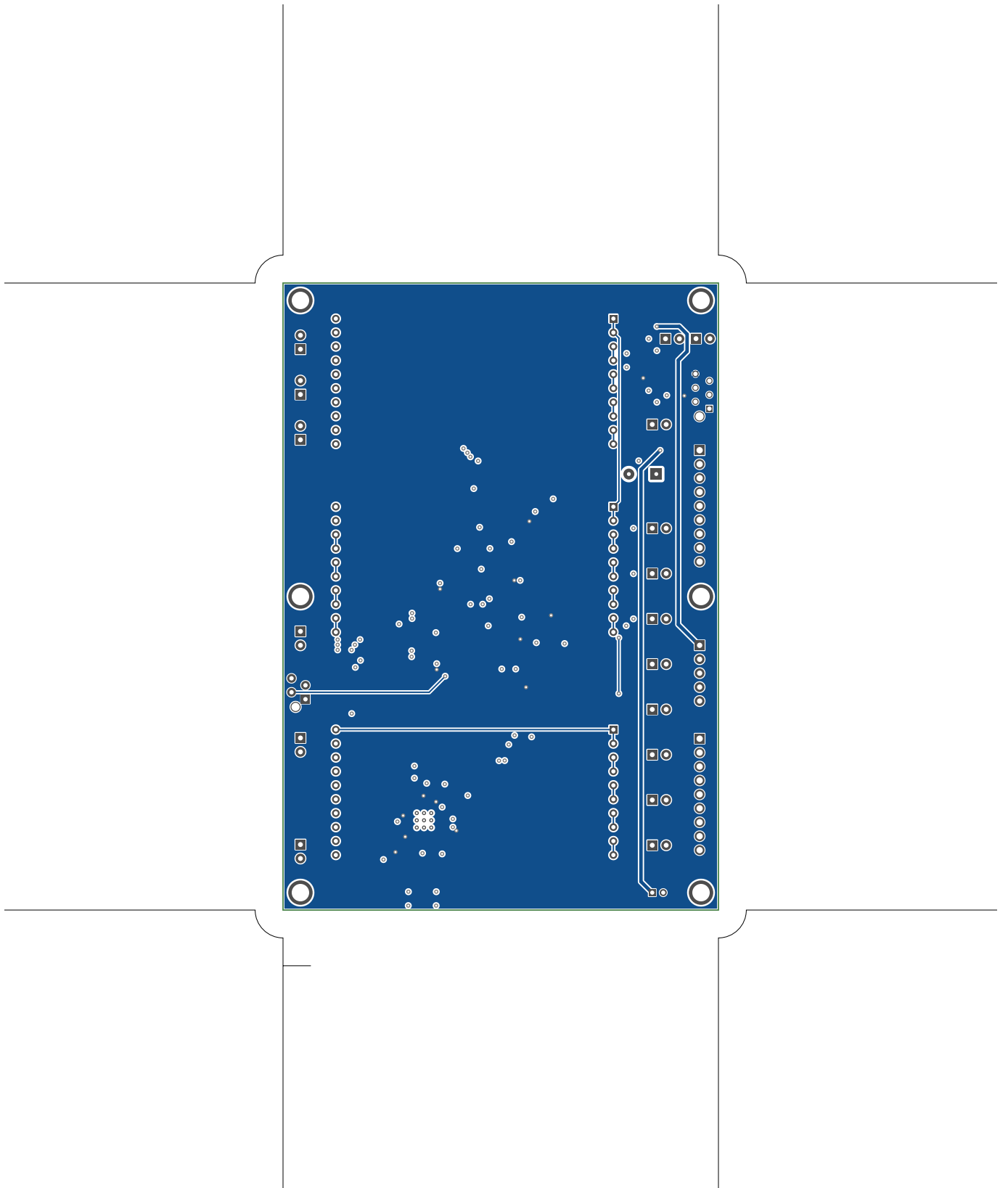
1. Table of Contents (This Page)

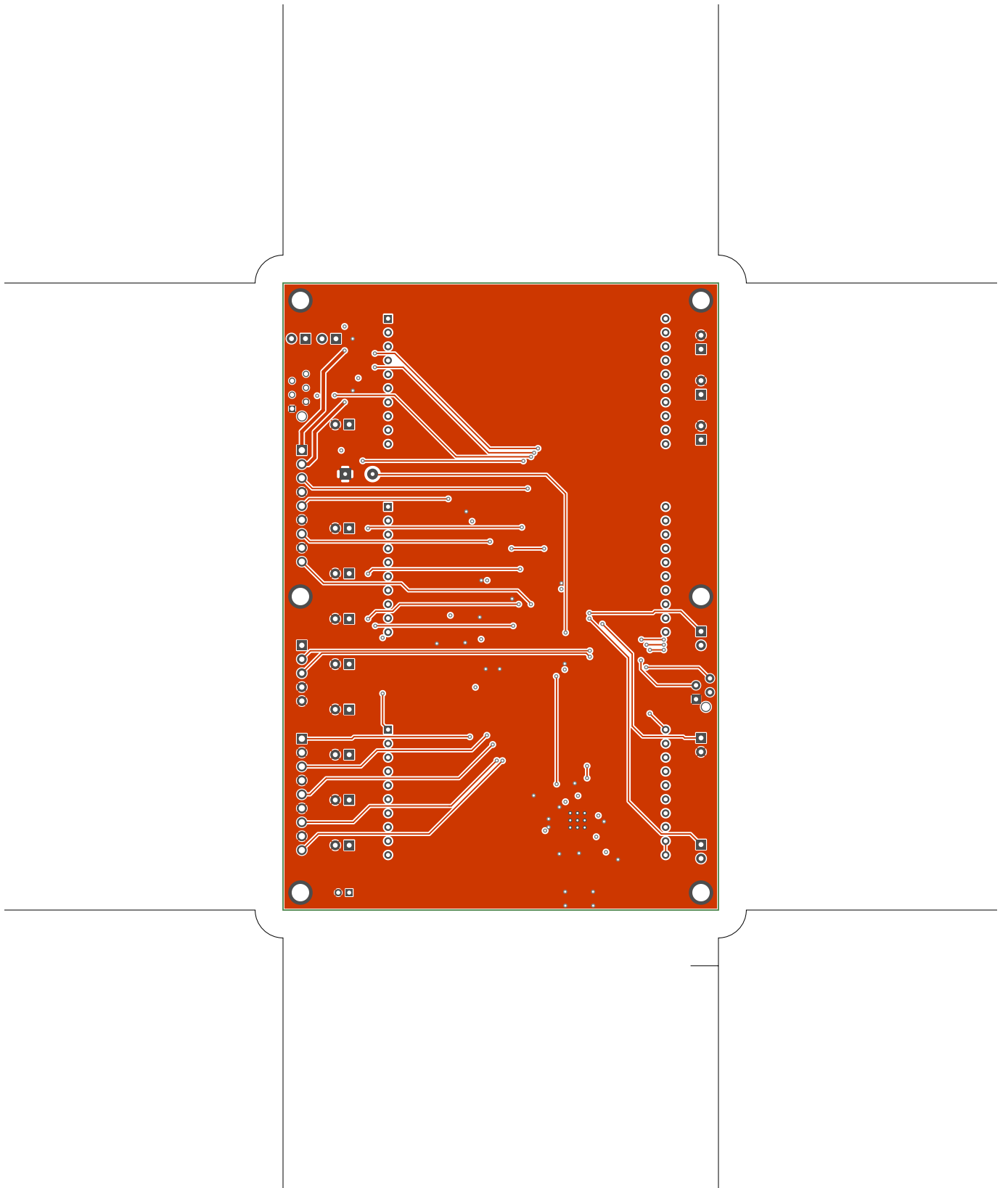
Created on Tue Apr 2 17:25:32 2019

2. top
3. ground
4. power
5. bottom
6. outline
7. plated-drill
8. componentmask
9. soldermask
10. topsilk
11. bottomsilk
12. toppaste
13. topassembly
14. bottomassembly
15. fab

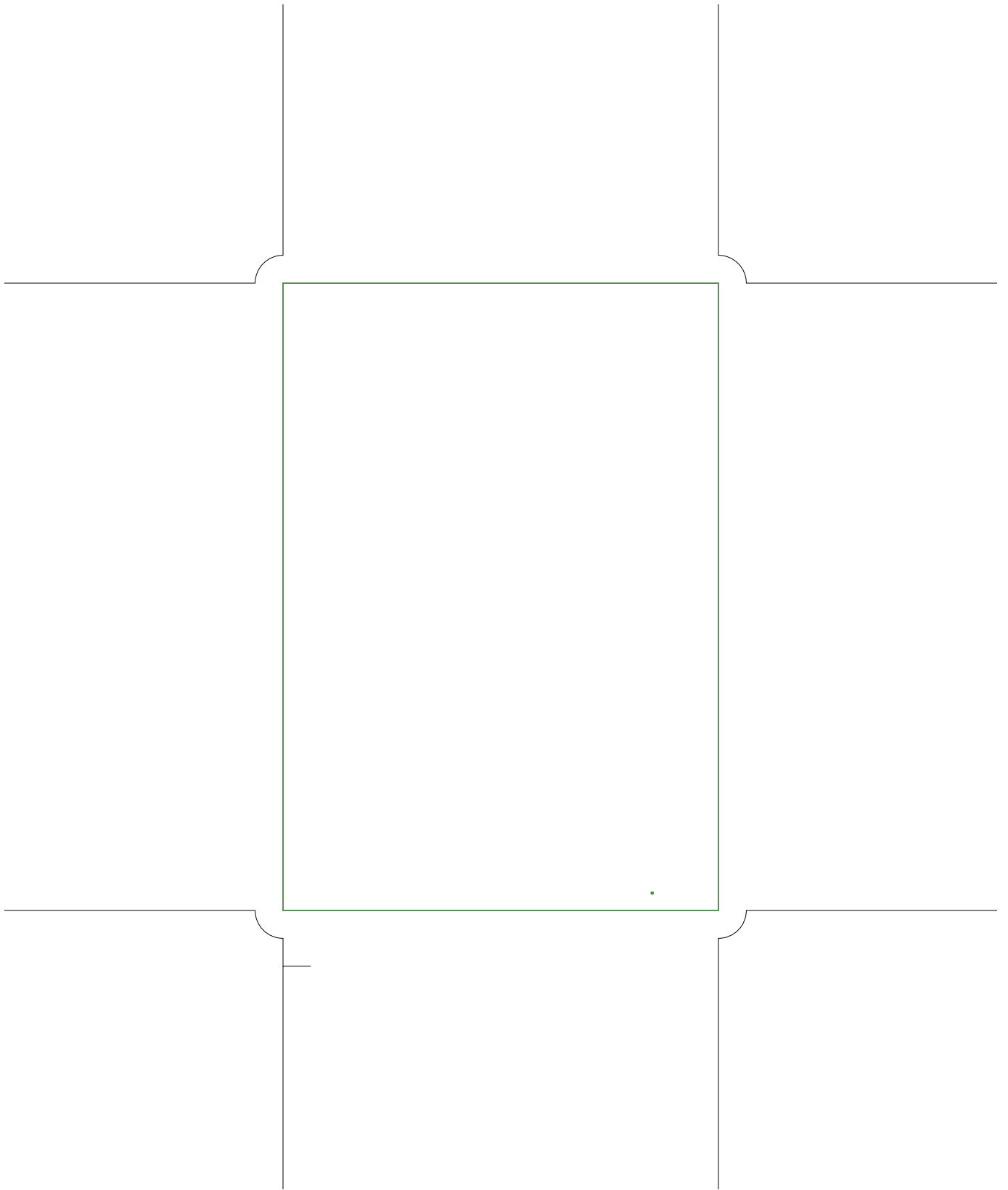


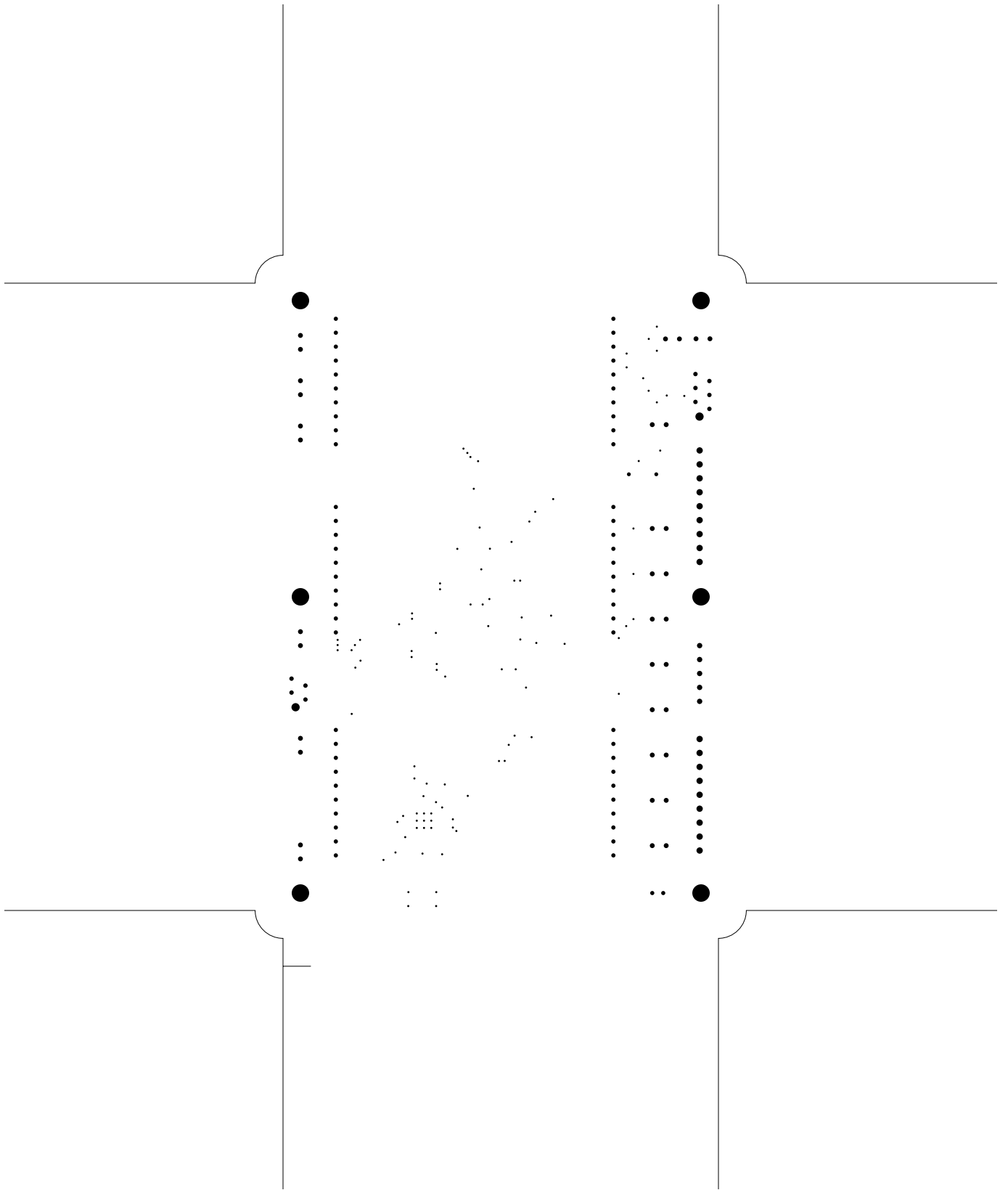


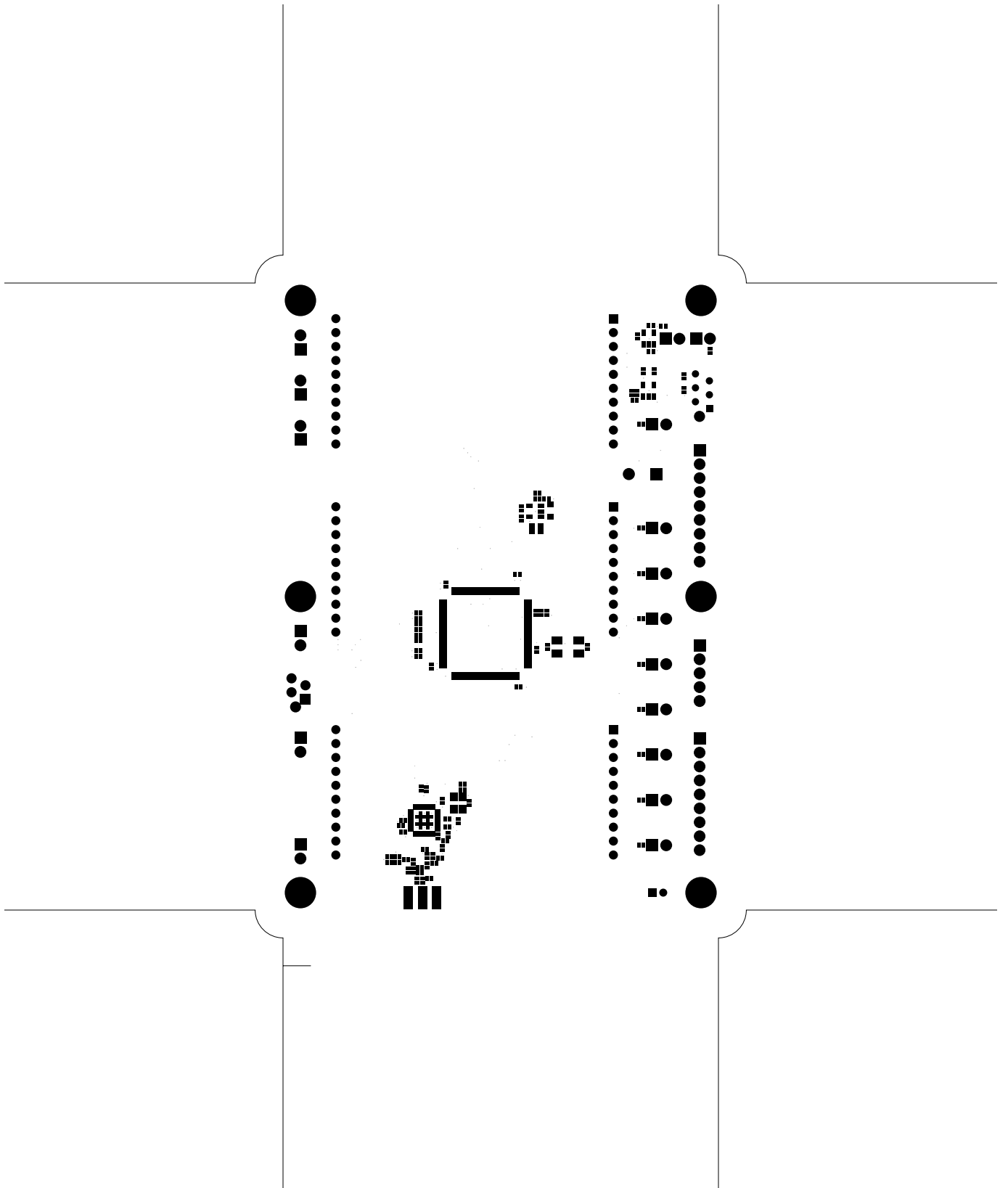


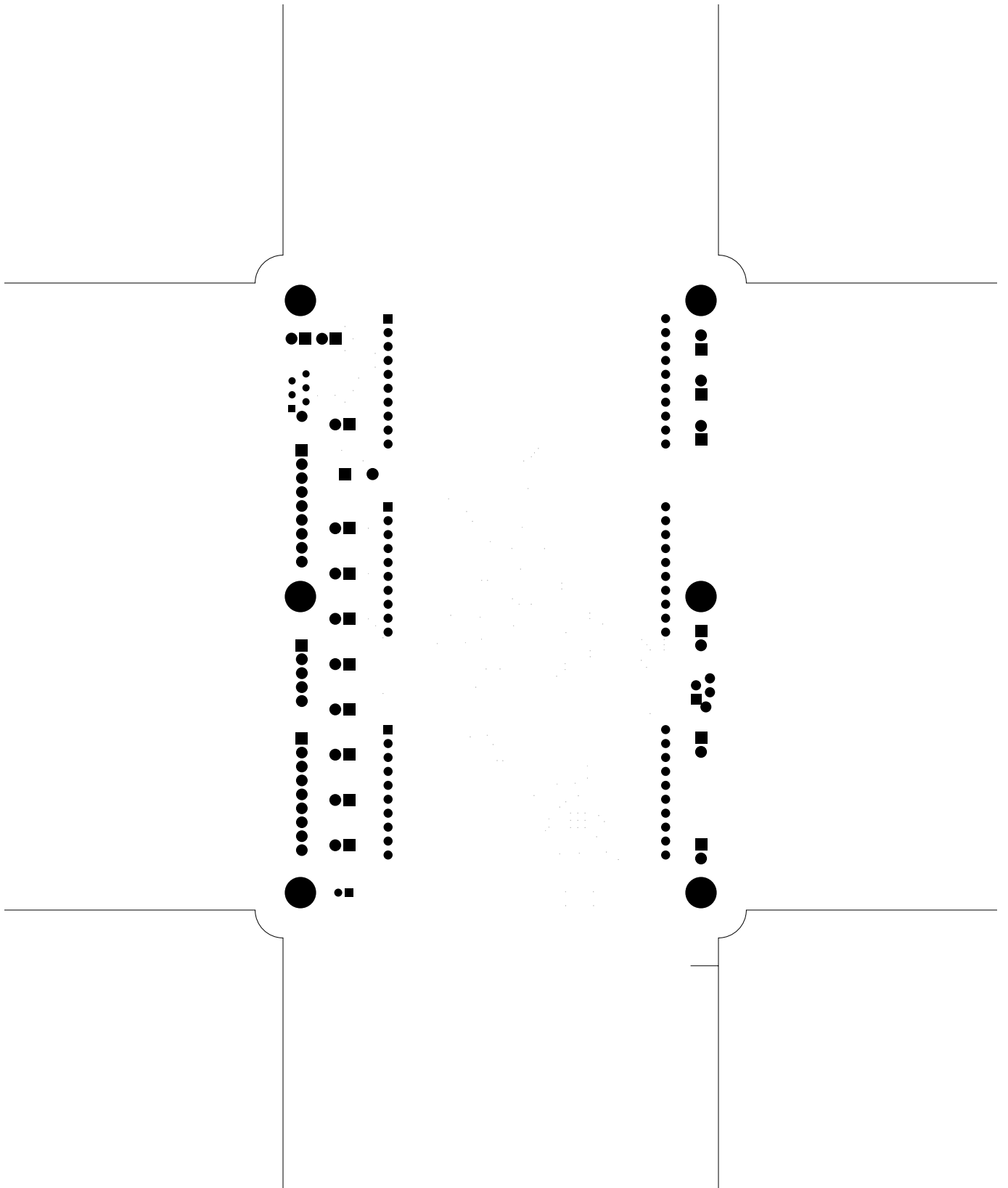


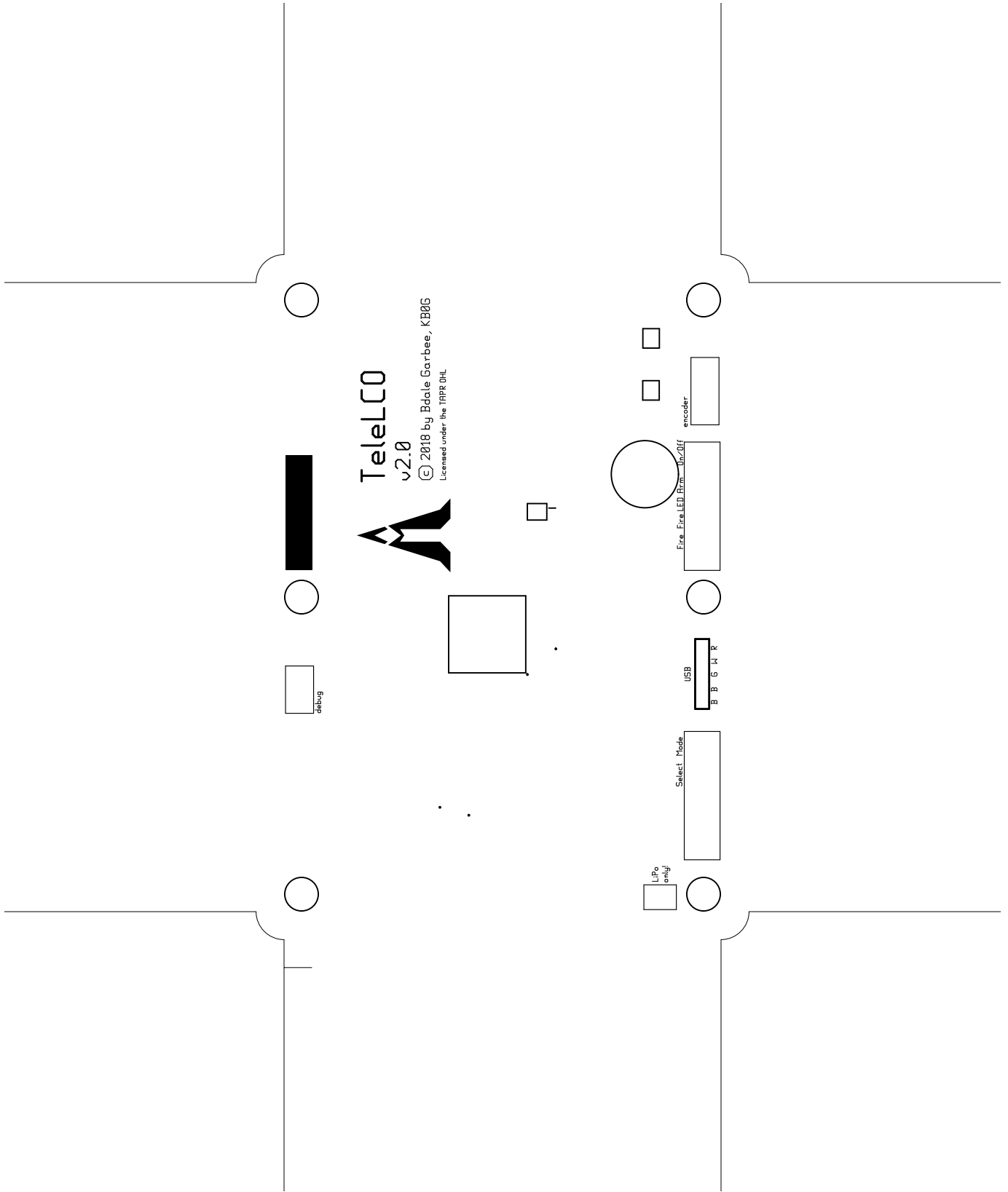
TeleLco, bottom (mirrored), scale = 1:1.000
telco.pcb

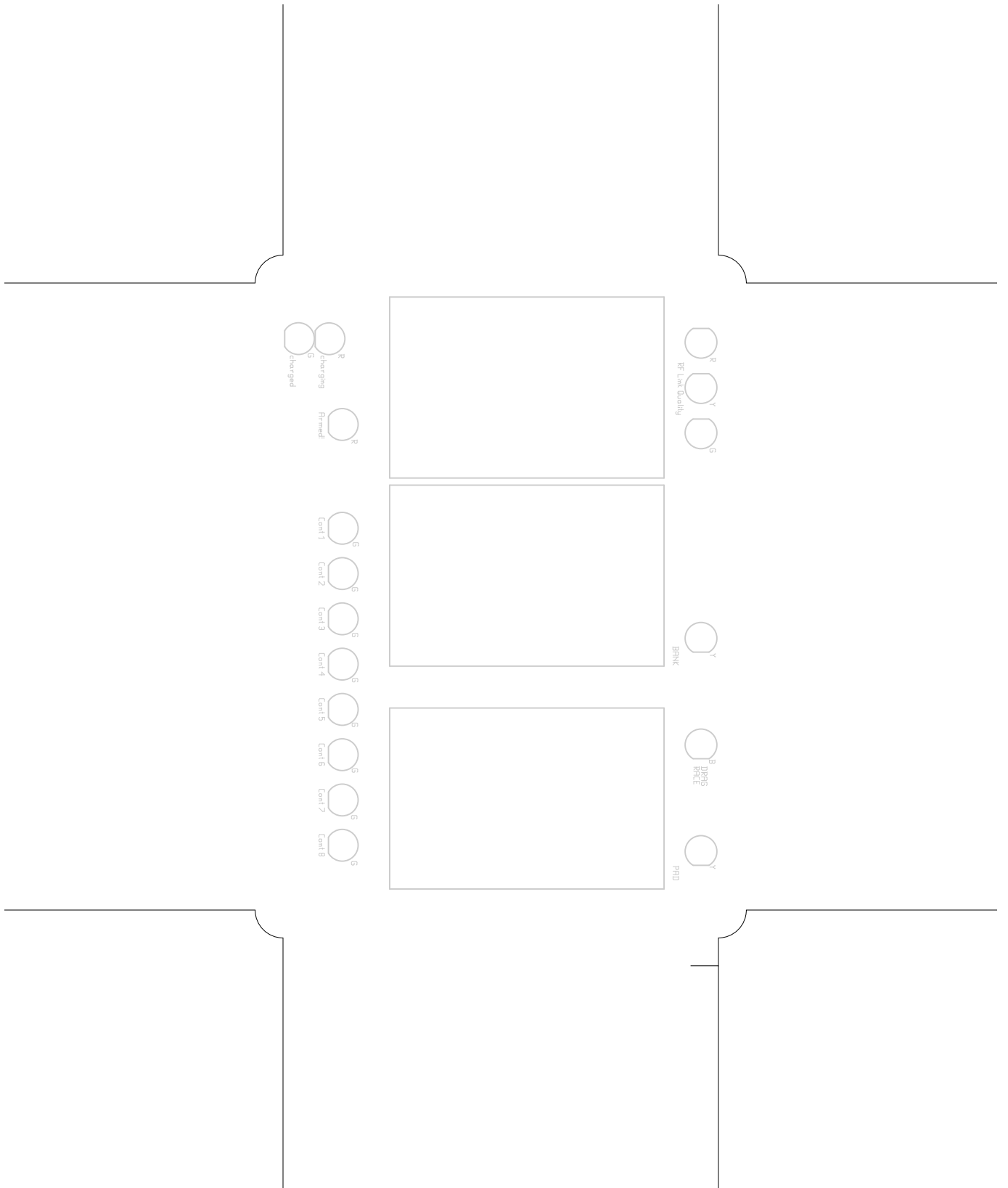


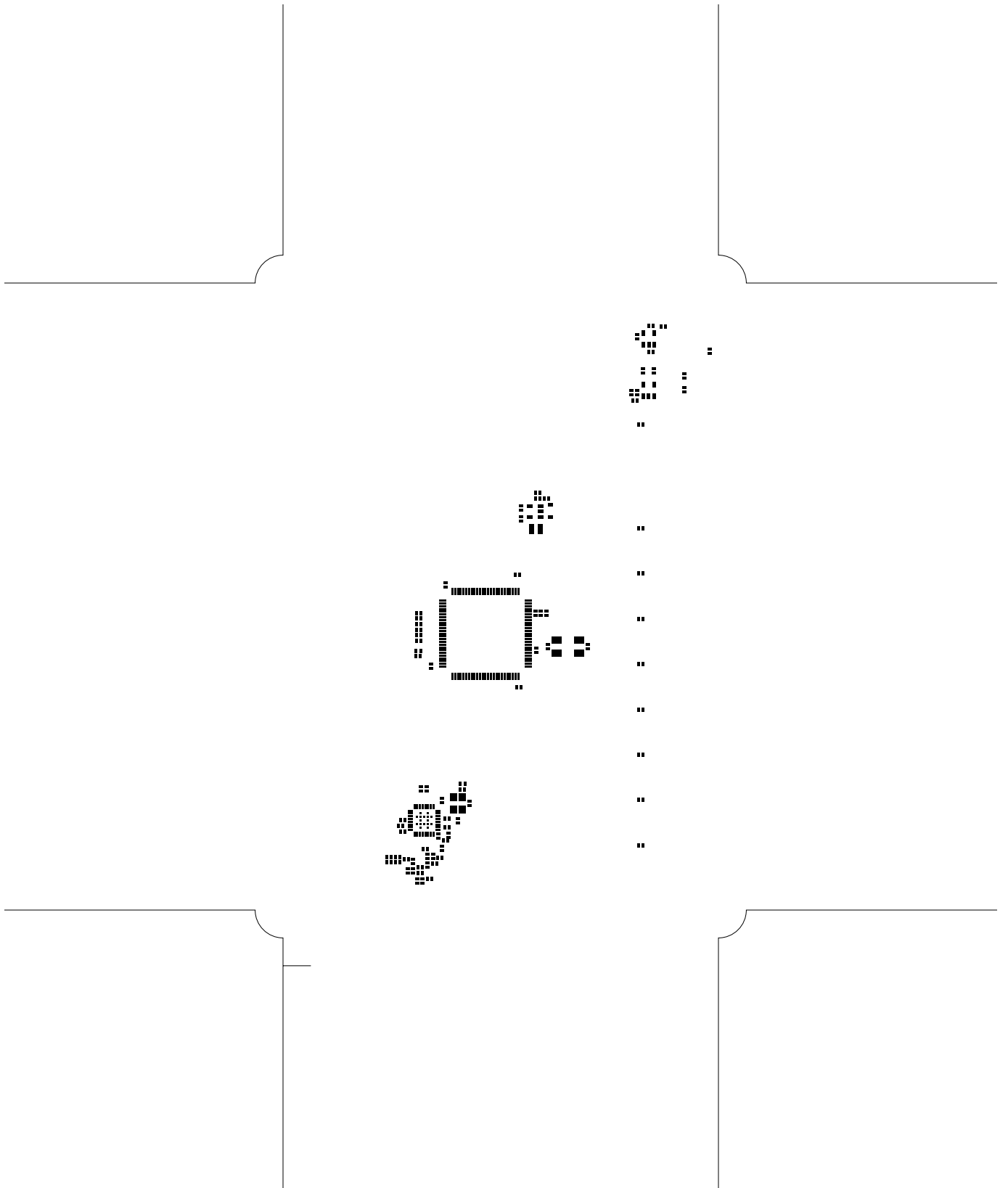


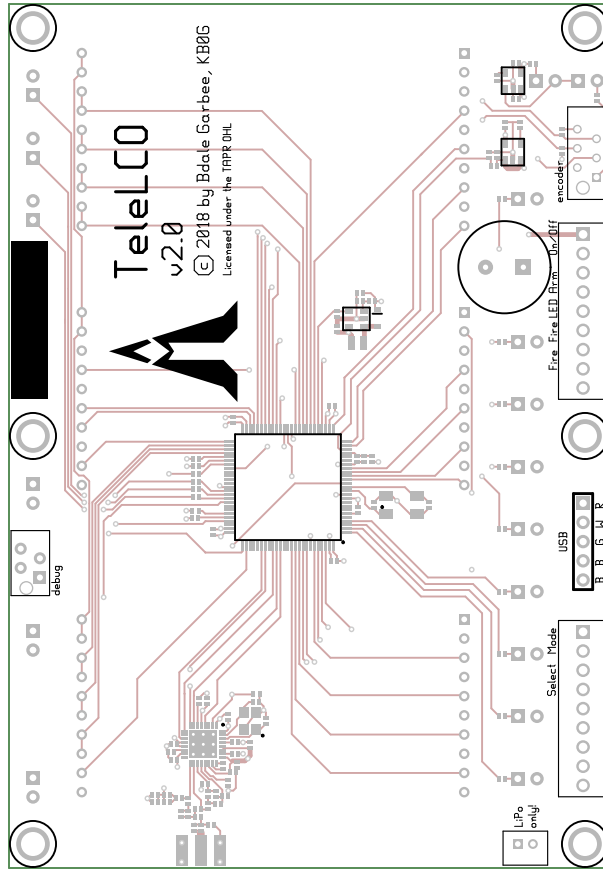


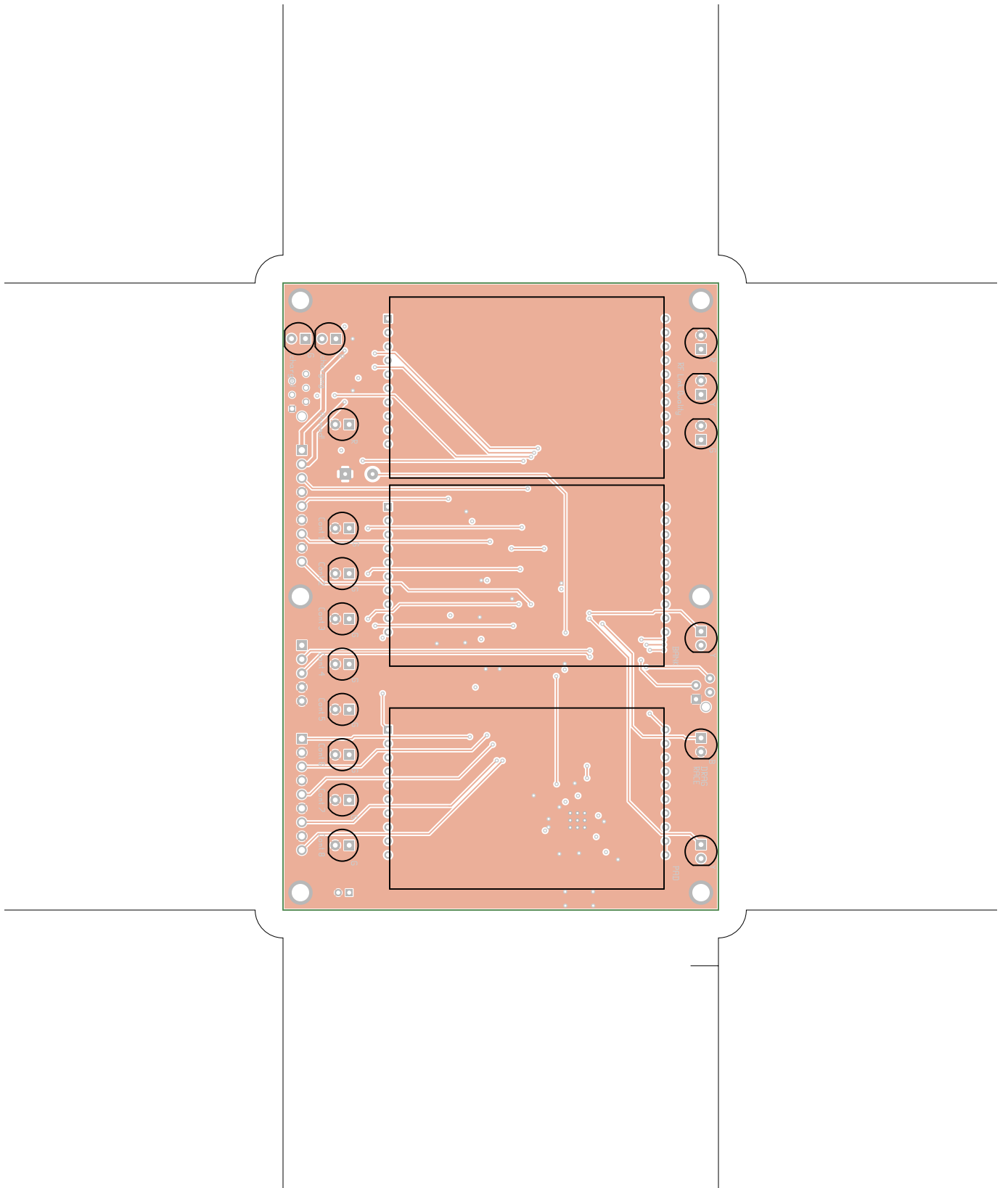










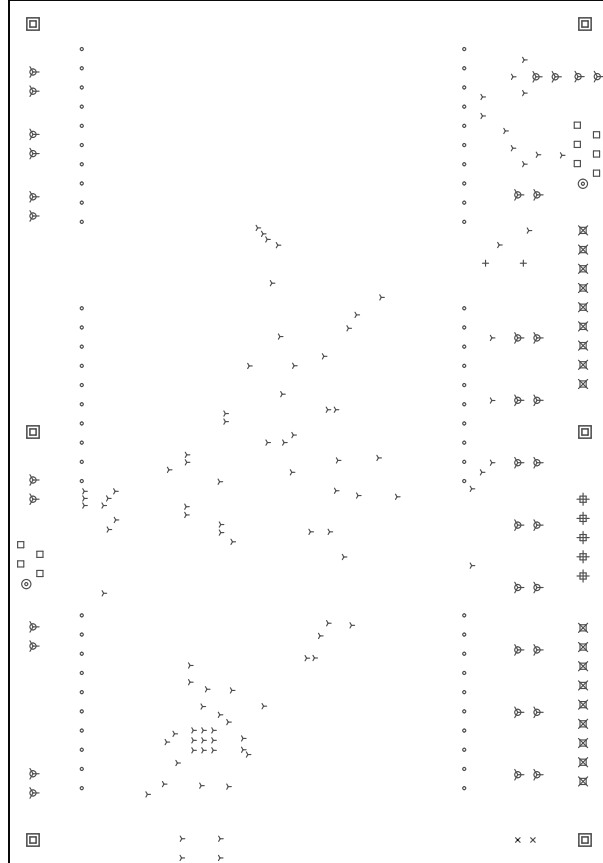


TeleLco, bottomassembly (mirrored), scale = 1:1.000
telco.pcb

There are 10 different drill sizes used in this layout, 240 holes total

Symbol	Diam. (Inch)	Count	Plated?
Y	0.015	101	YES
+	0.028	2	YES
x	0.030	2	YES
o	0.030	60	YES
□	0.032	10	YES
∅	0.035	34	YES
#	0.038	5	YES
⊗	0.045	18	YES
⊙	0.059	2	YES
⊠	0.125	6	YES

Title: TeleLco - Fabrication Drawing
 Author: Bdale Garbee
 Date: Tue Apr 2 23:25:32 2019 UTC



Board outline is the center-line of this path