

1. Table of Contents (This Page)  
Created on Sat Apr 26 11:56:38 2014

2. top

3. bottom

4. outline

5. plated-drill

6. componentmask

7. soldermask

8. topsilk

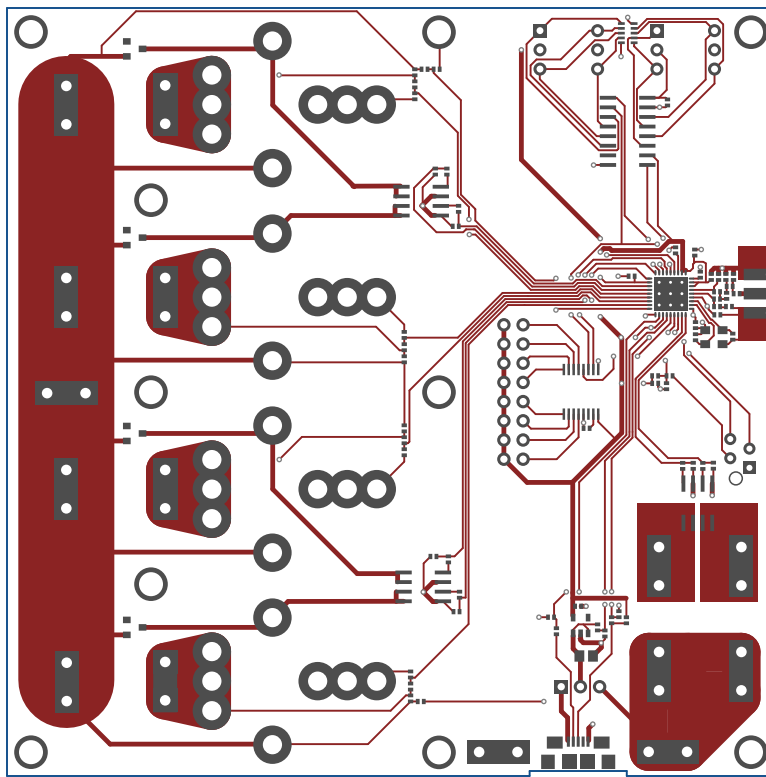
9. bottomsilk

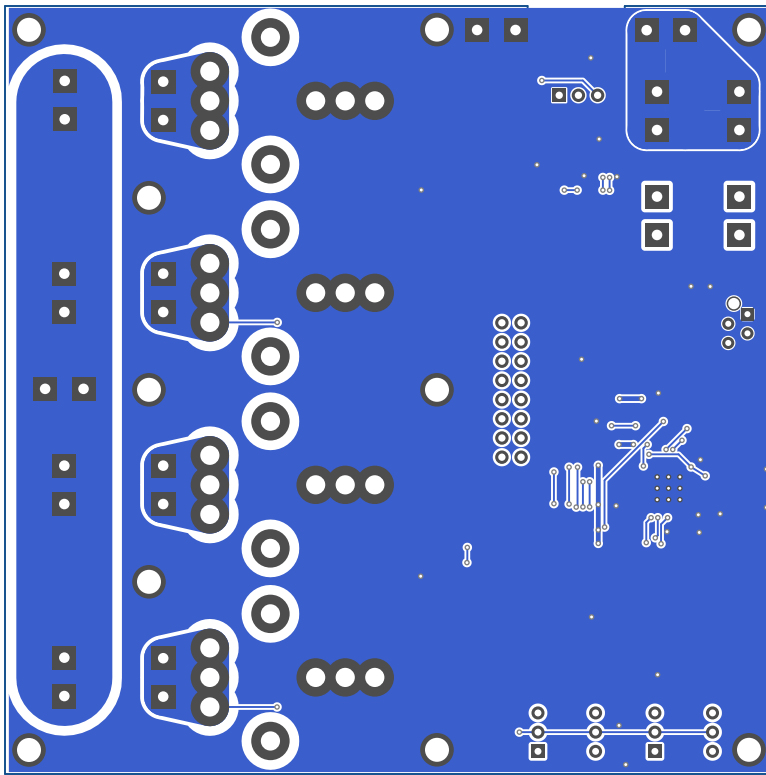
10. toppaste

11. topassembly

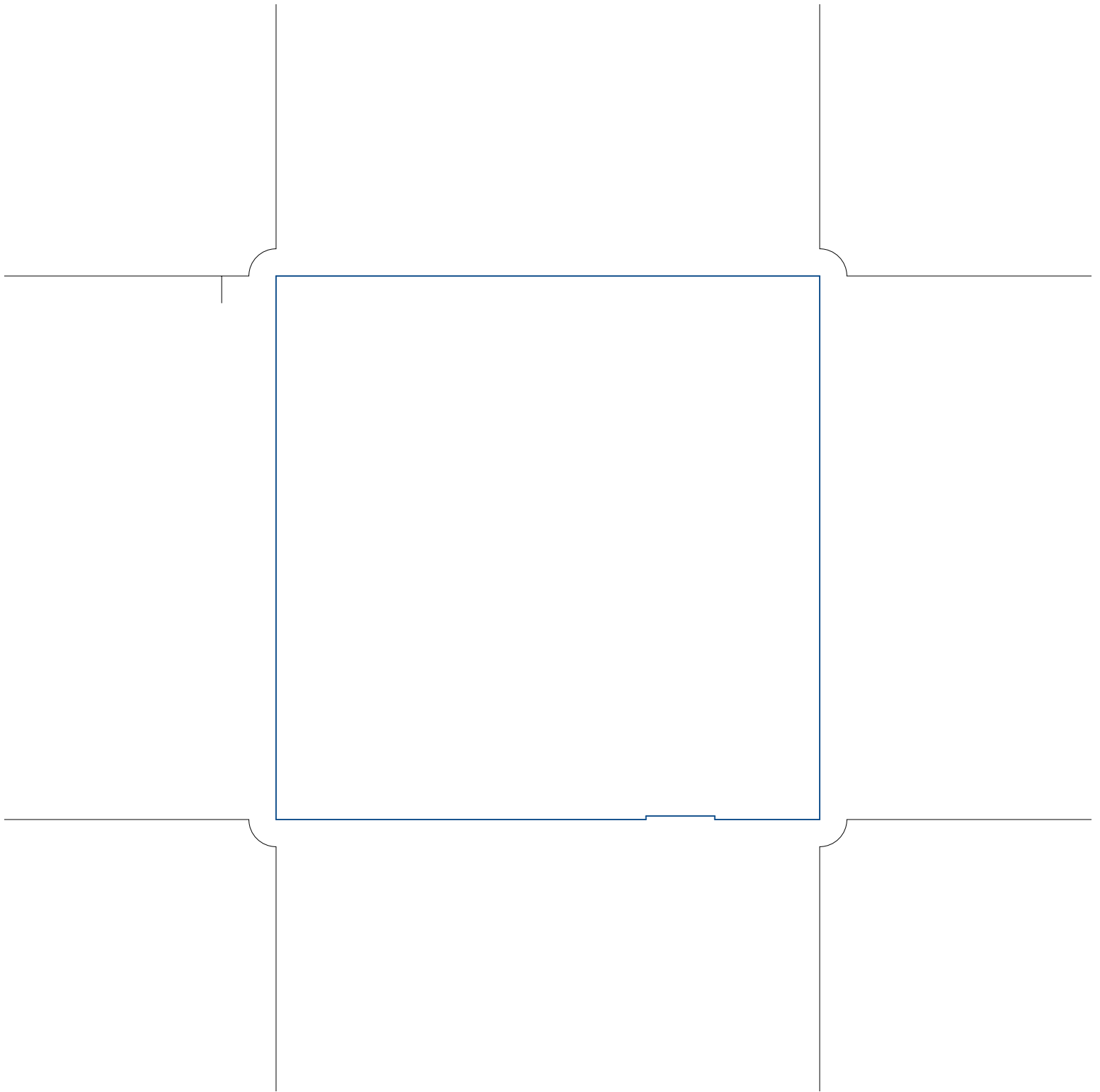
12. bottomassembly

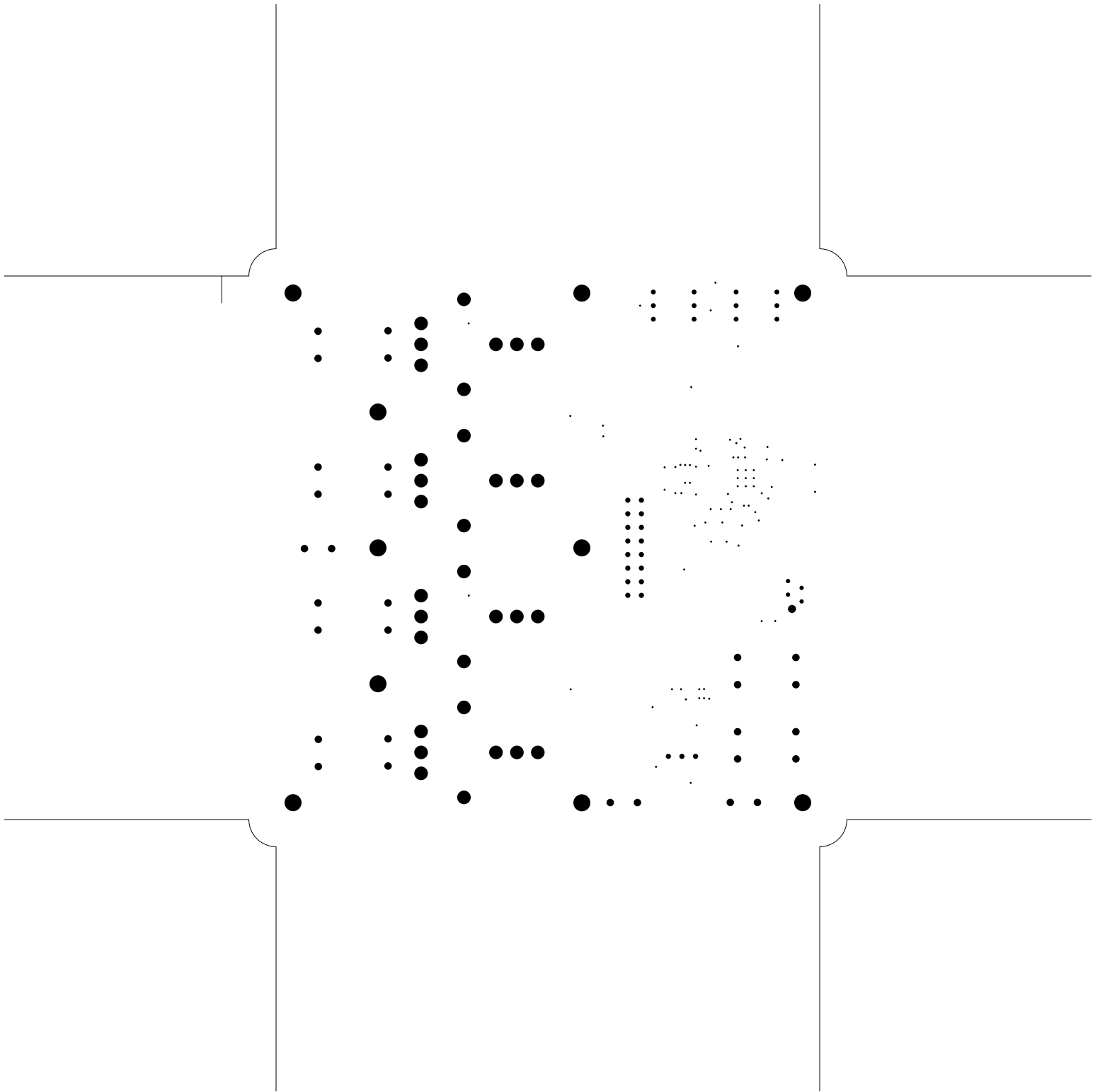
13. fab

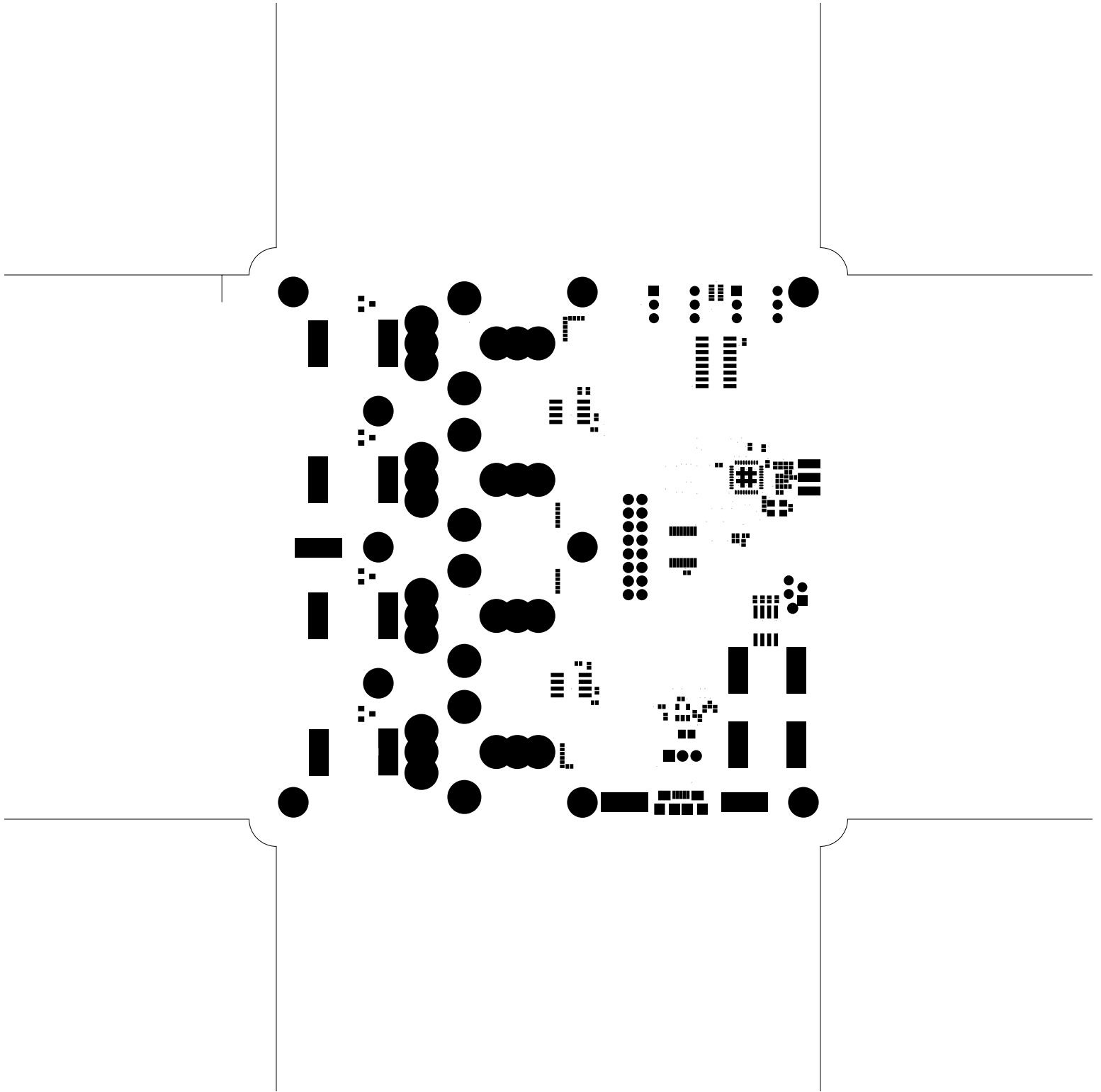


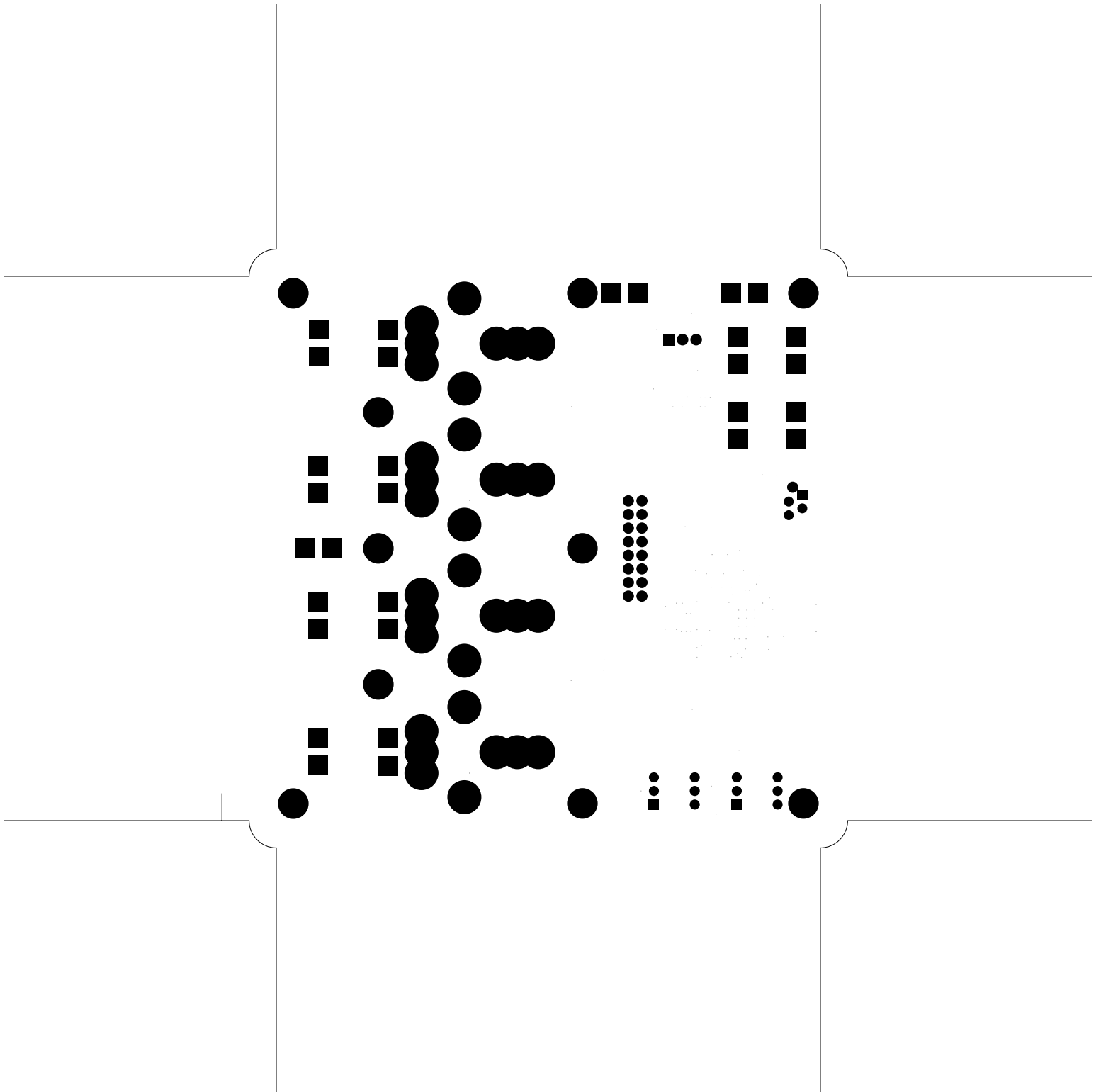


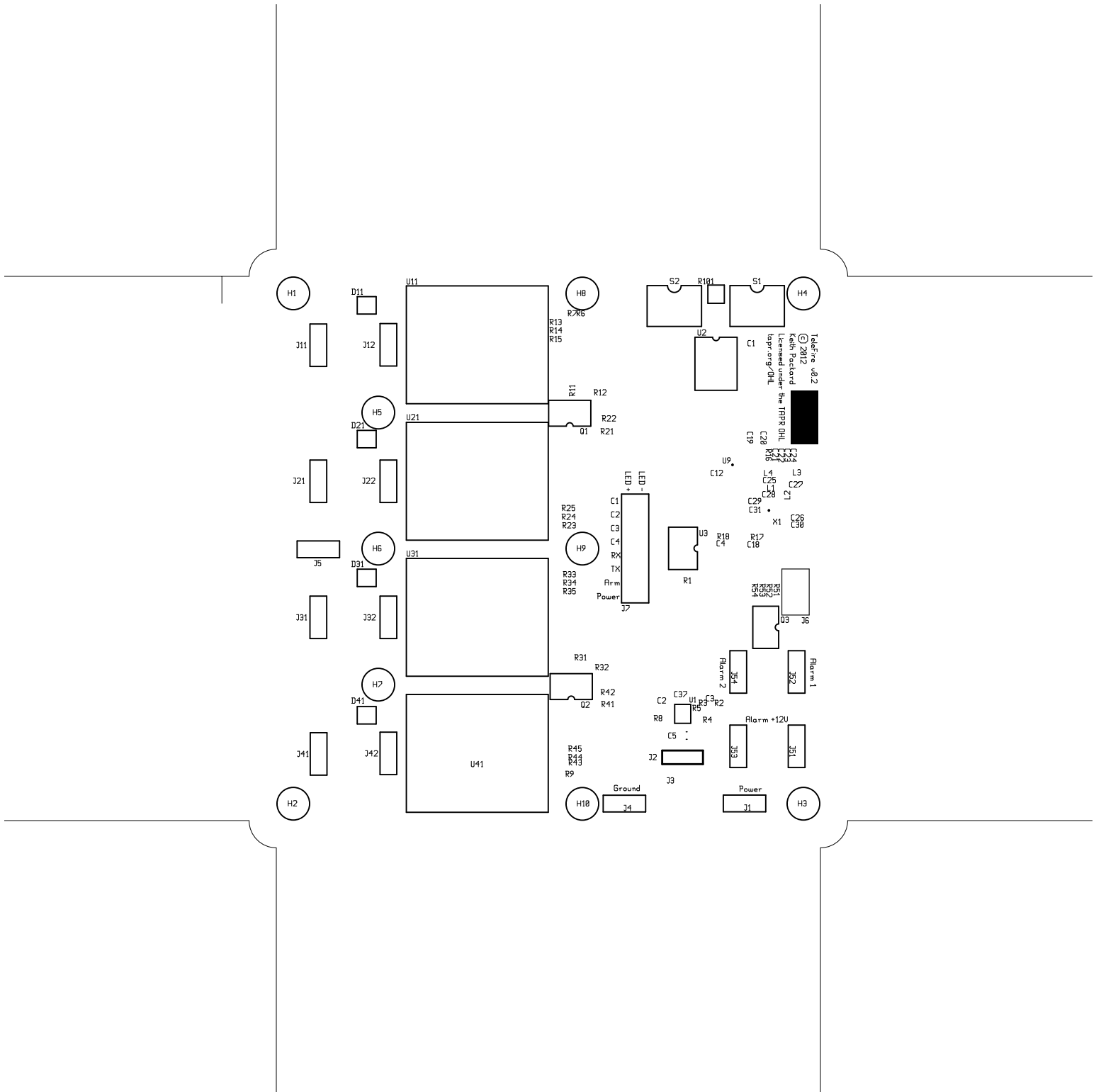
TeleFire, bottom (mirrored), scale = 1:1.000  
telefire.pcb



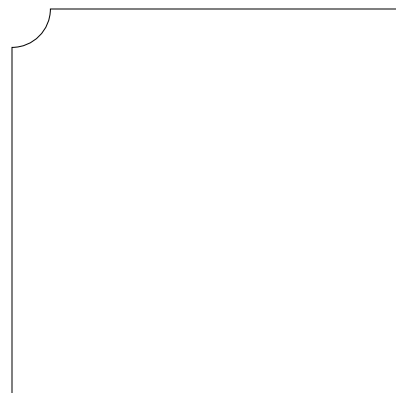
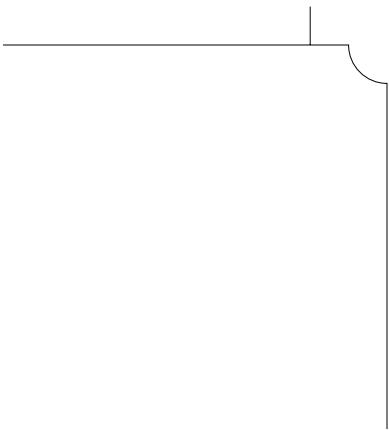
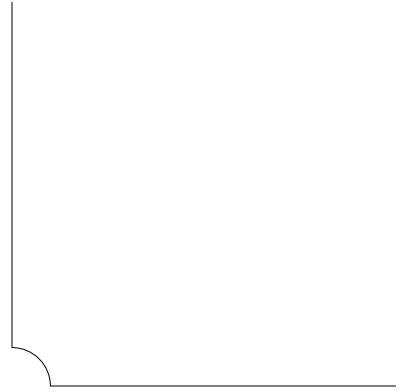
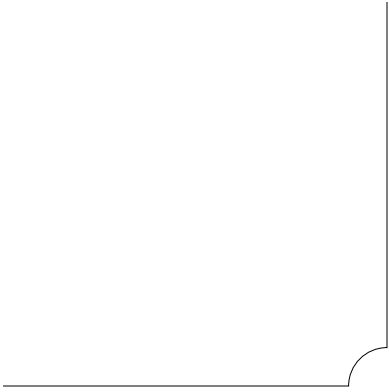


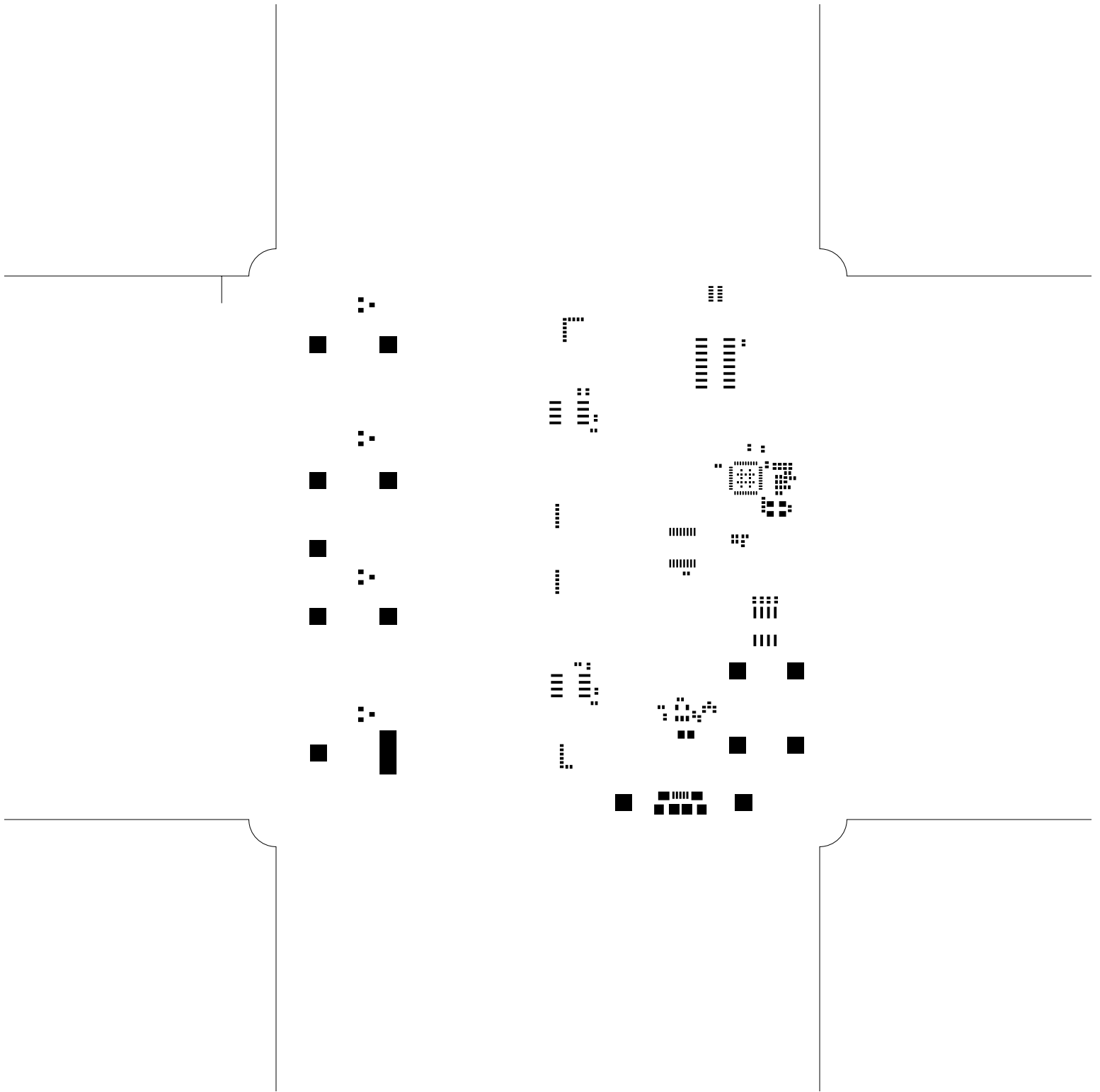


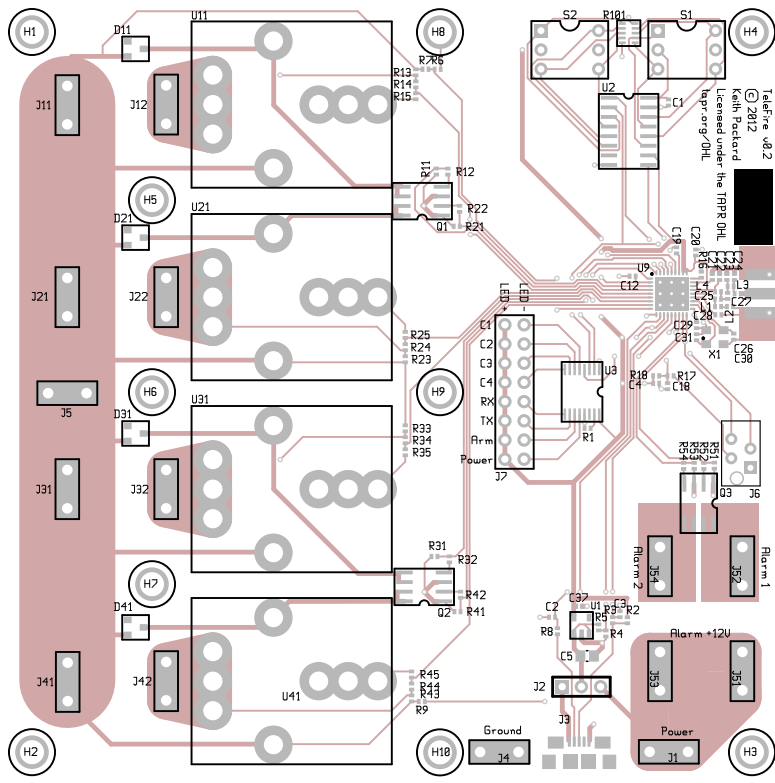




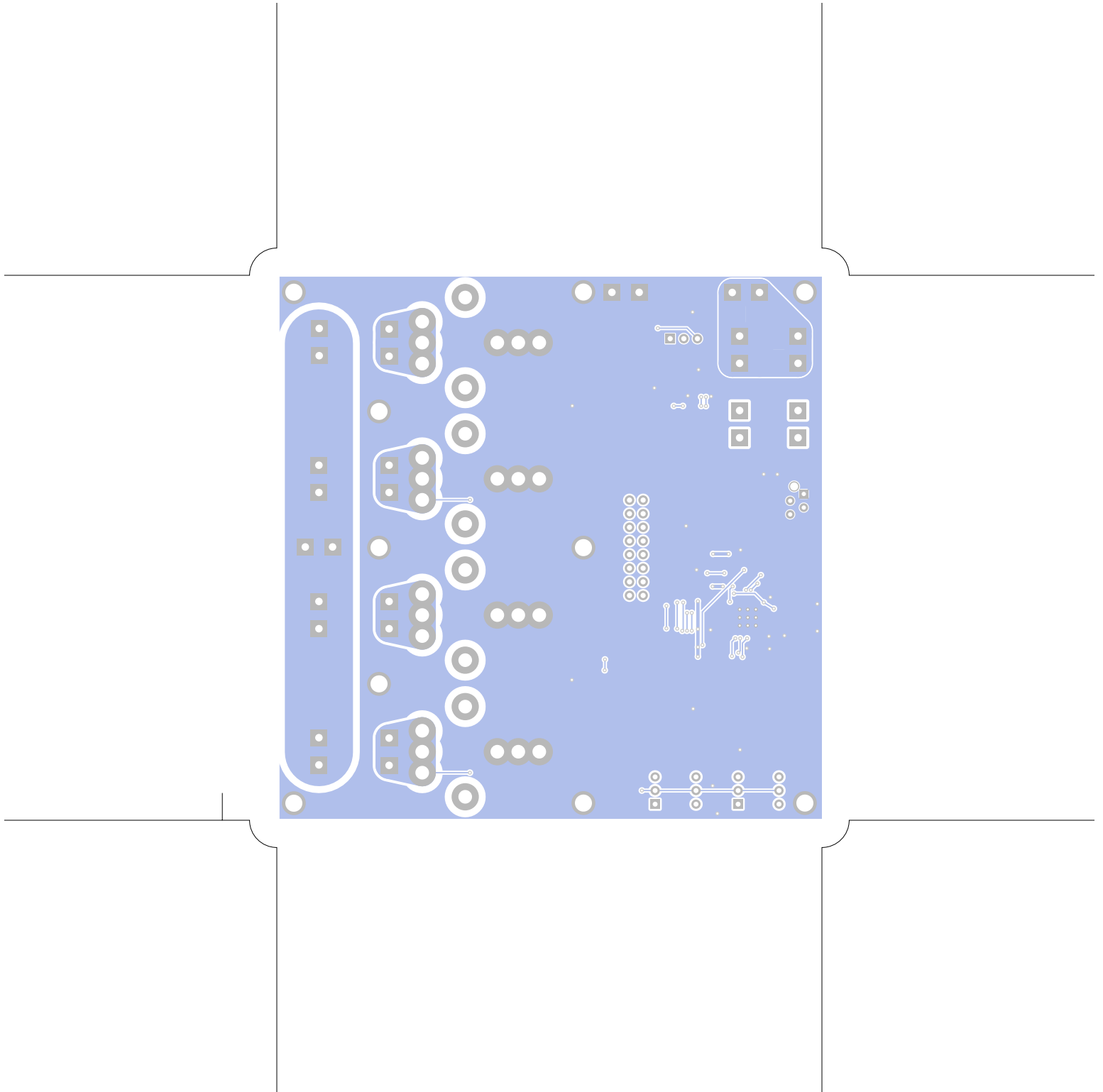








TeleFire v0.2  
 © 2012  
 Keith Packard  
 Licensed under the TAPR OHL  
 http://tapr.org/OHL



TeleFire, bottomassembly (mirrored), scale = 1:1.000  
telefire.pcb

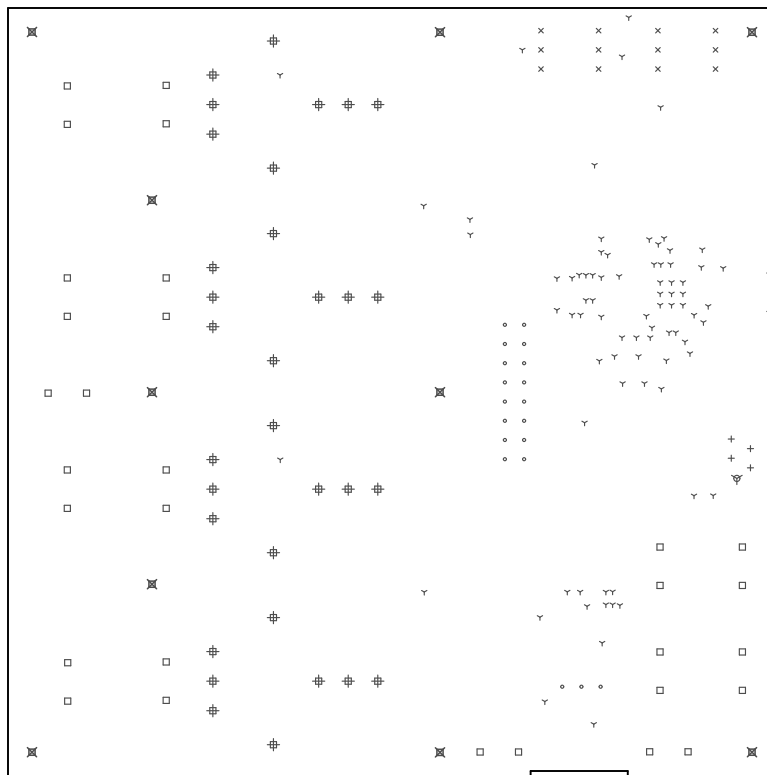
There are 8 different drill sizes used in this layout, 190 holes total

Symbol	Diam. (Inch)	Count	Plated?
Y	0.015	82	YES
+	0.032	4	YES
x	0.036	12	YES
o	0.038	19	YES
□	0.055	30	YES
⊗	0.059	1	YES
⊕	0.100	32	YES
⊗	0.125	10	YES

Title: TeleFire - Fabrication Drawing

Author: Keith Packard

Date: Sat 26 Apr 2014 06:56:38 PM GMT UTC



Board outline is the centerline of this path