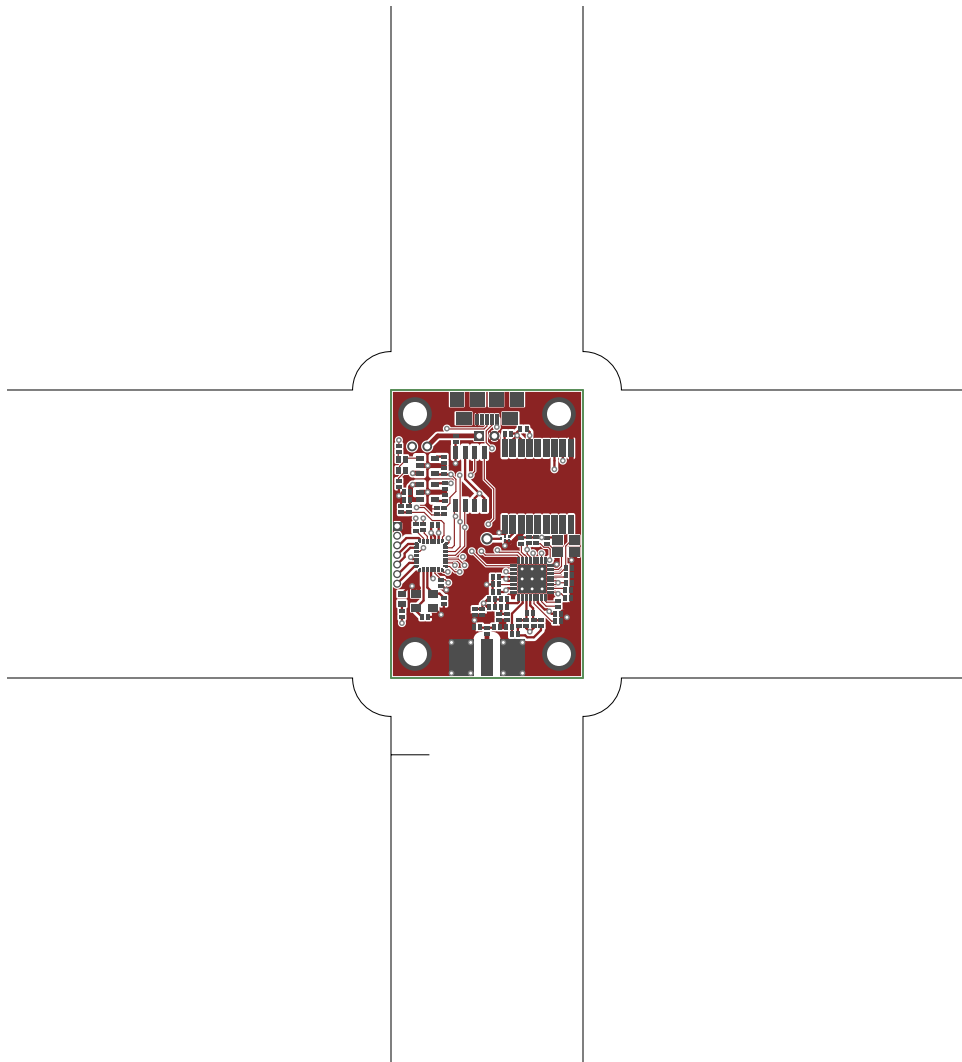
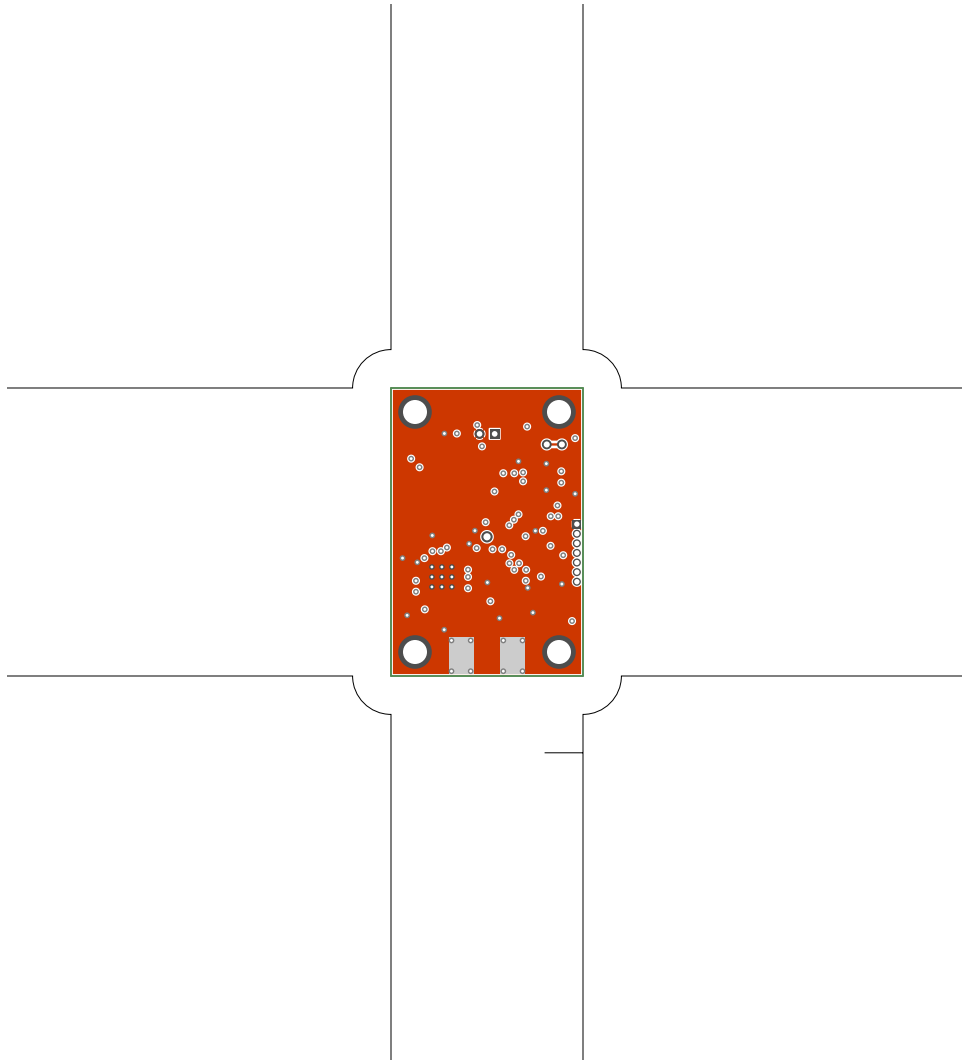


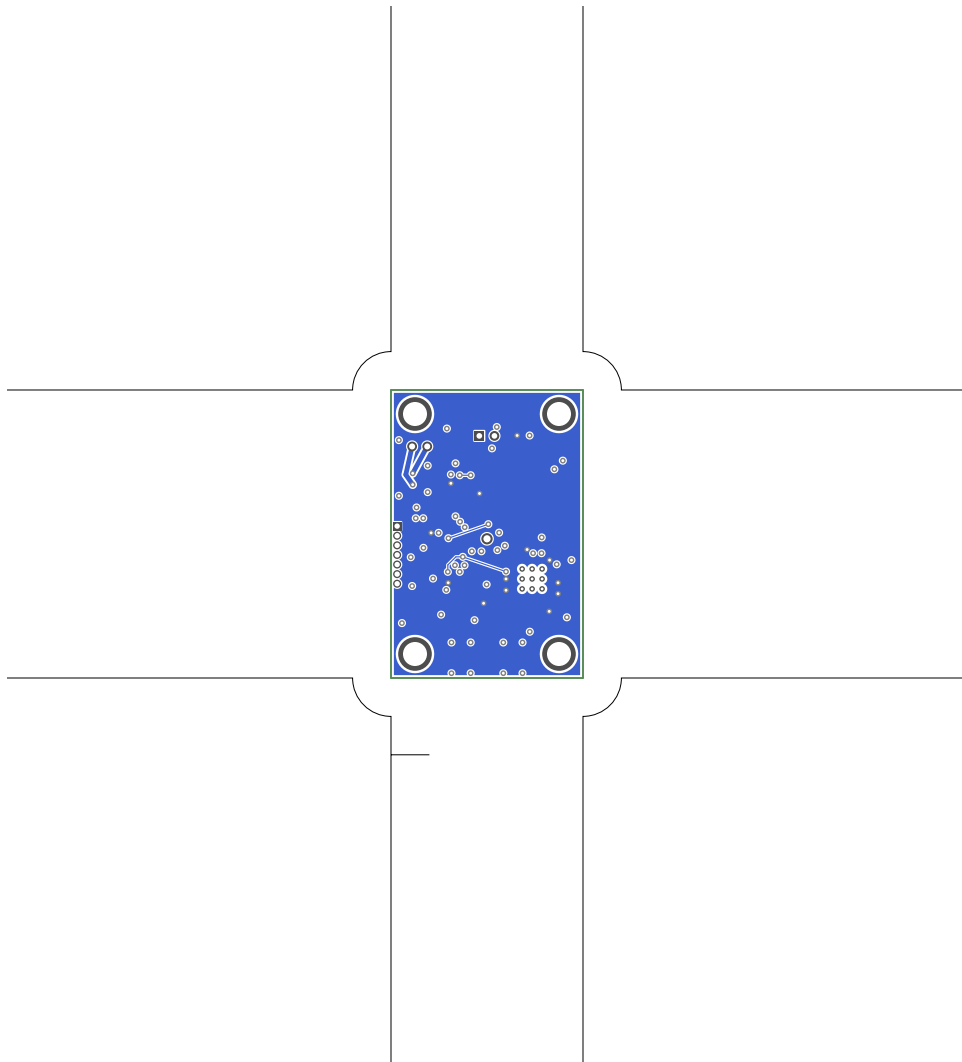
1. Table of Contents (This Page)

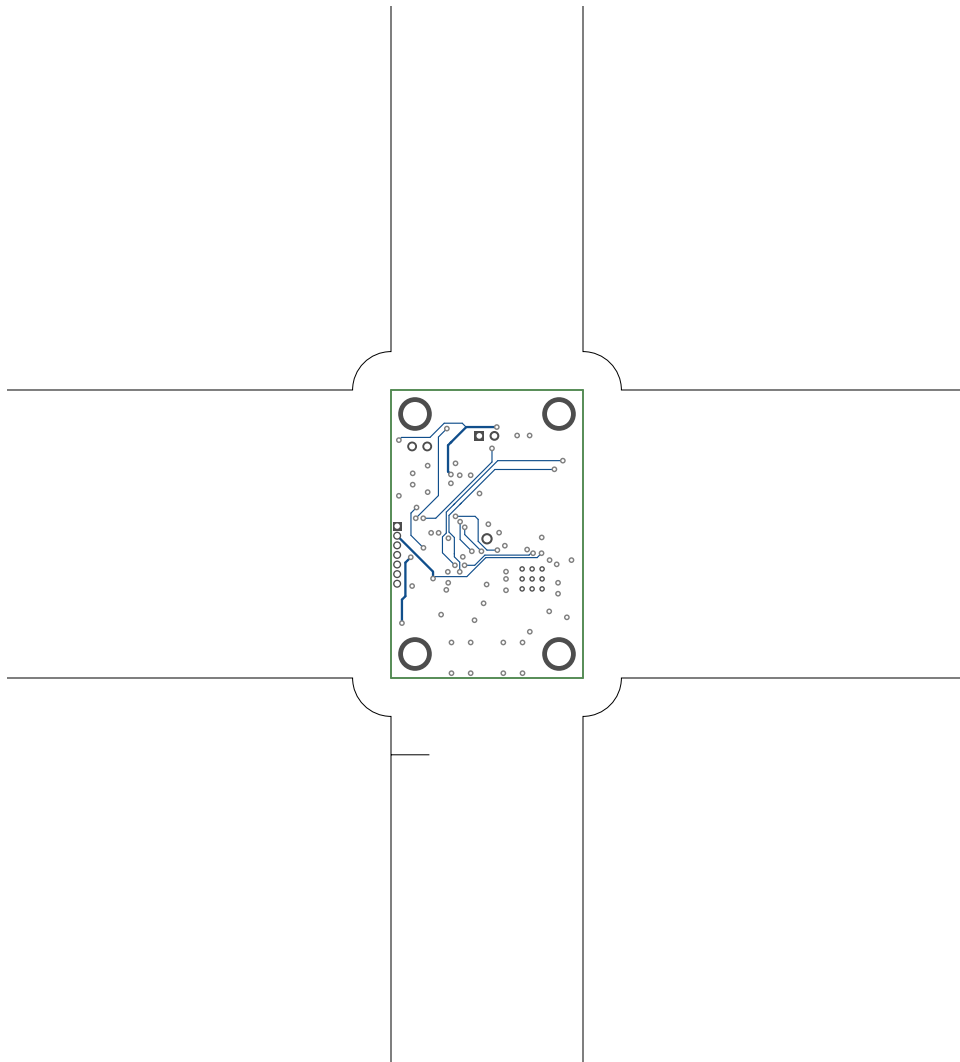
Created on Fri May 29 17:11:50 2020

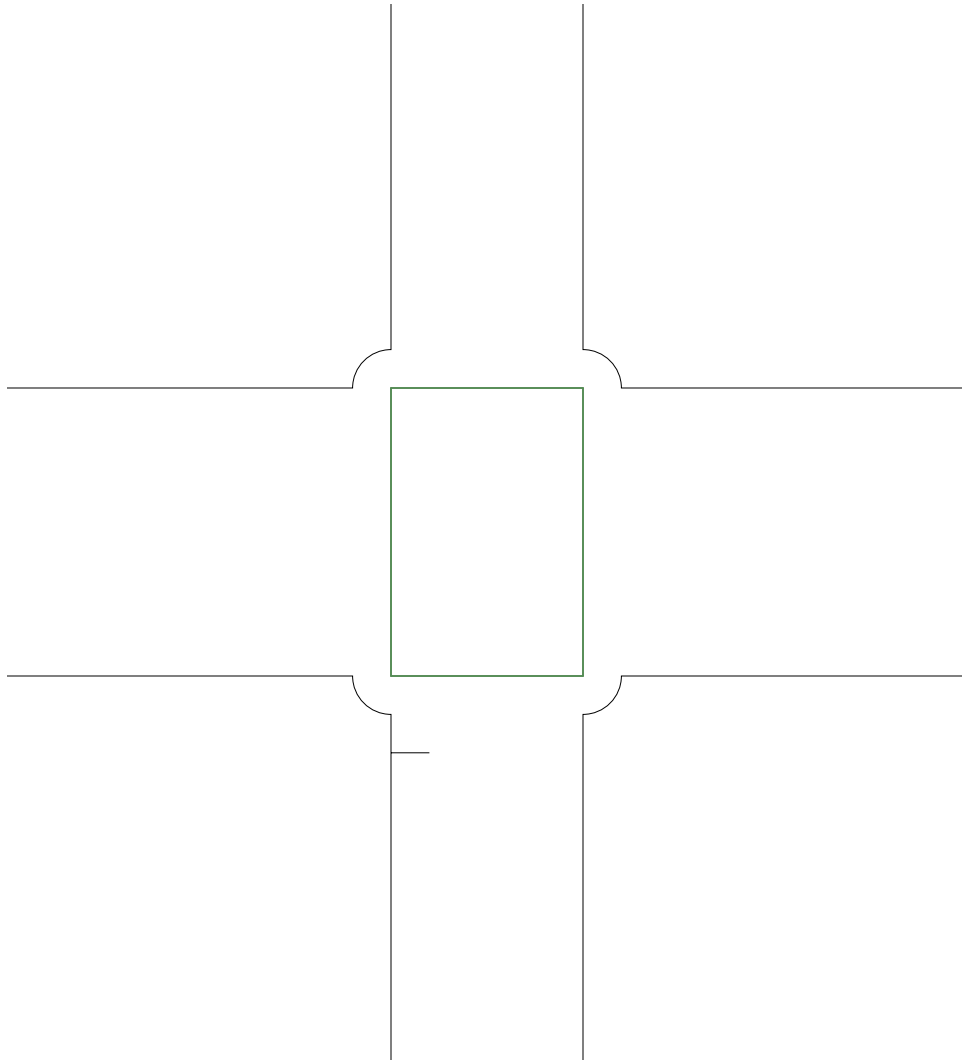
2. top
3. ground
4. power
5. signal
6. outline
7. plated-drill
8. componentmask
9. soldermask
10. topsilk
11. bottomsilk
12. toppaste
13. topassembly
14. bottomassembly
15. fab

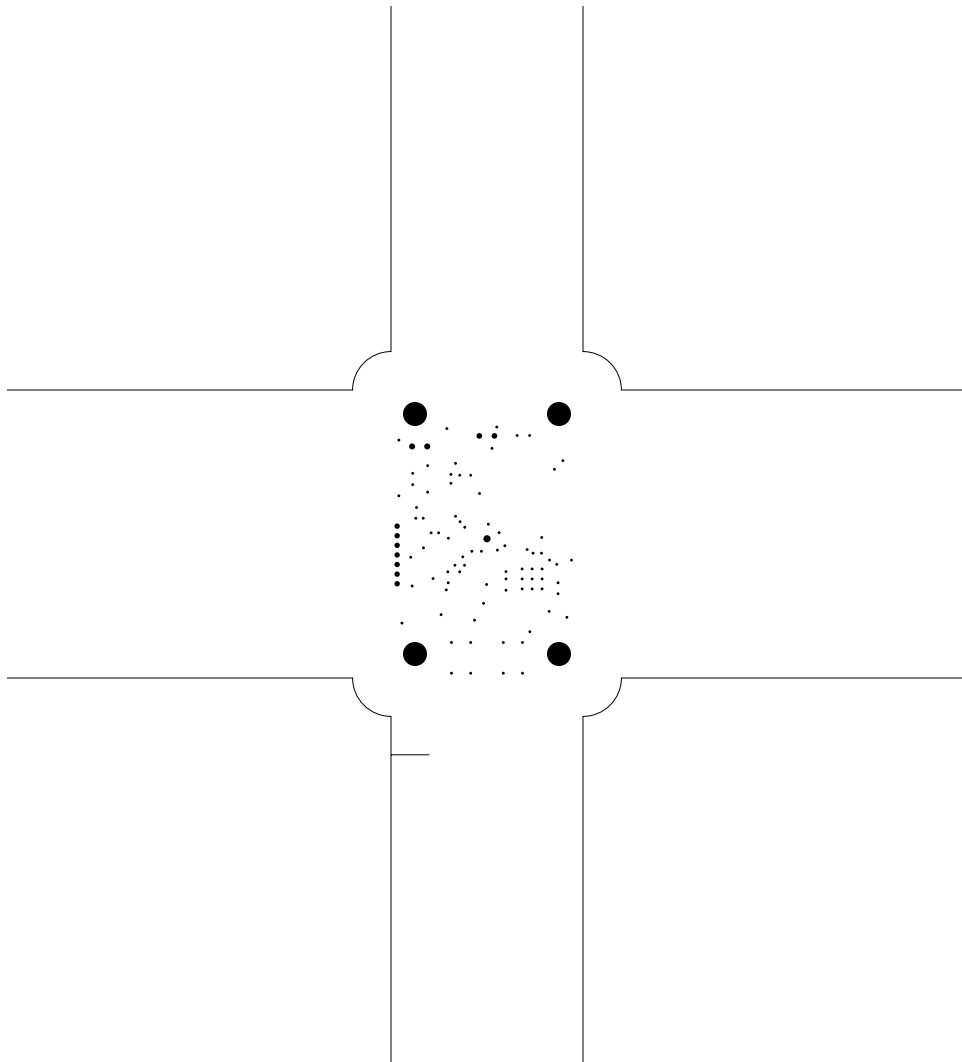


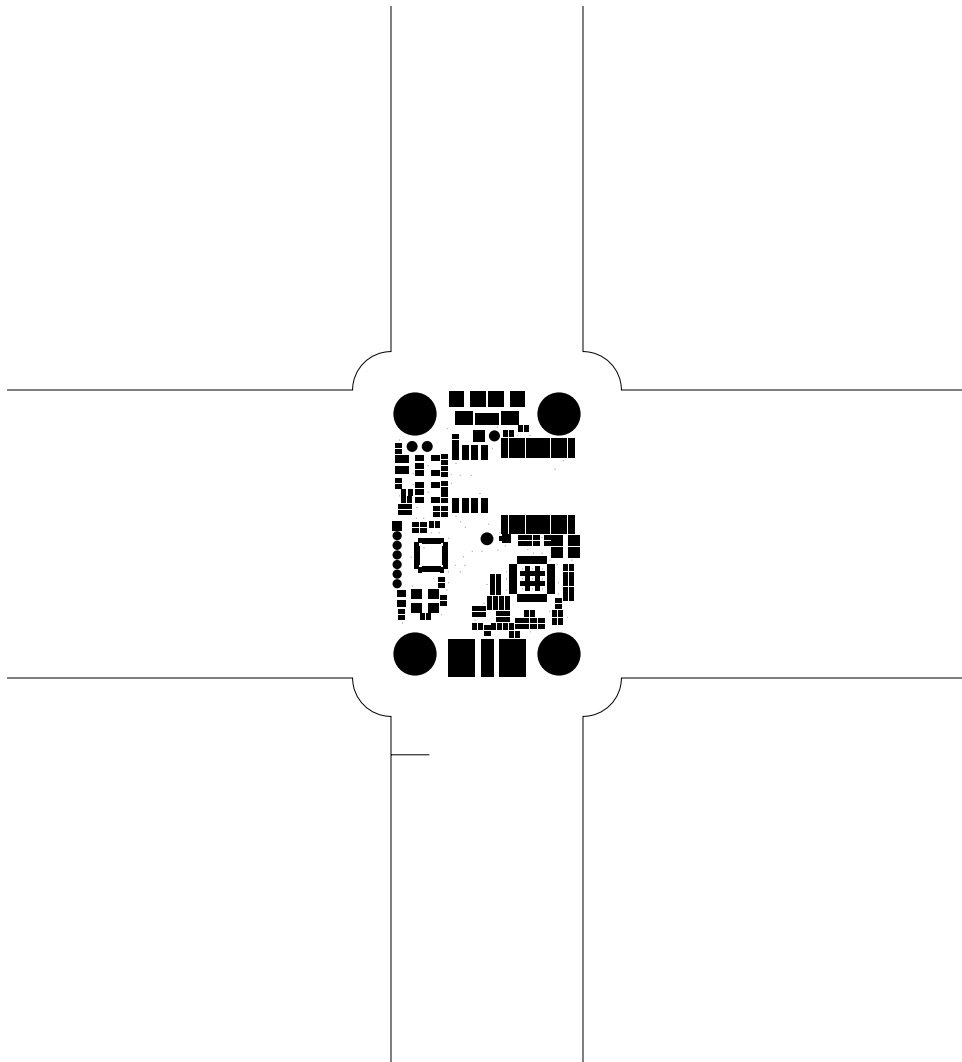


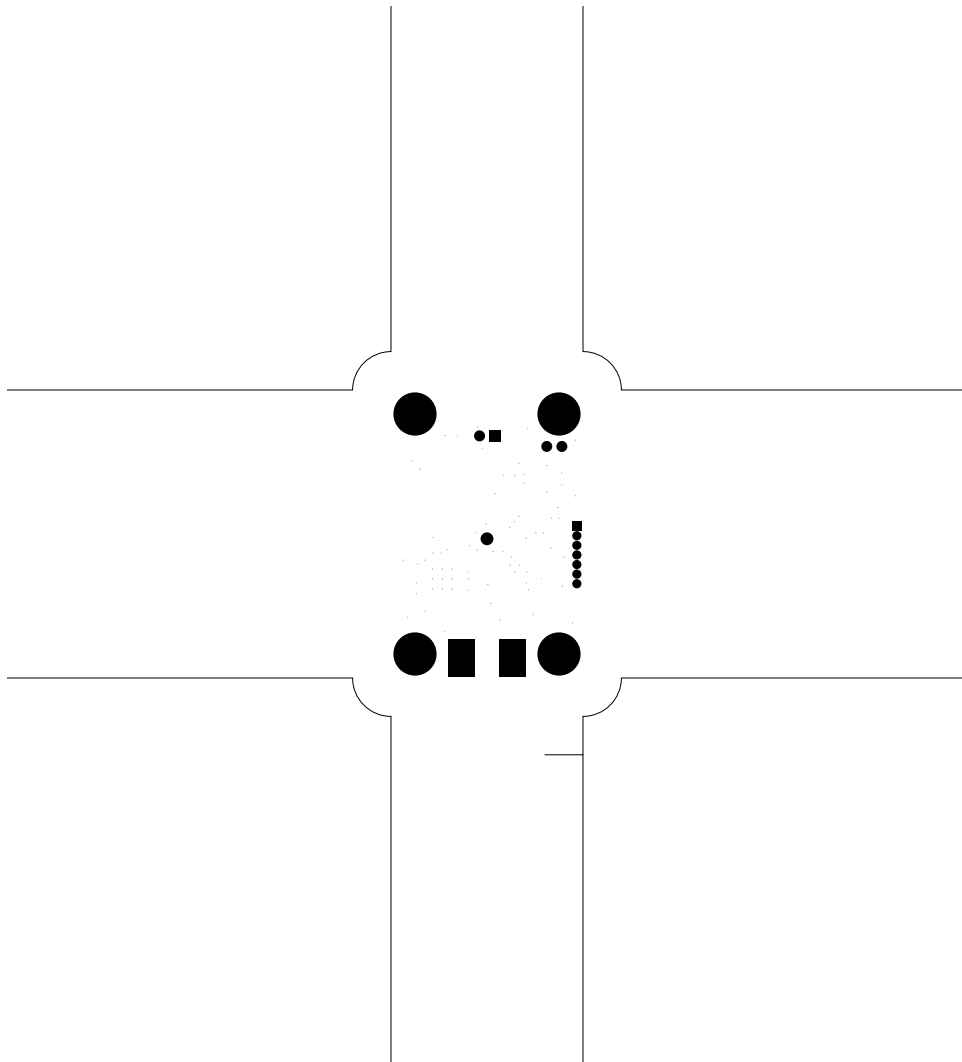


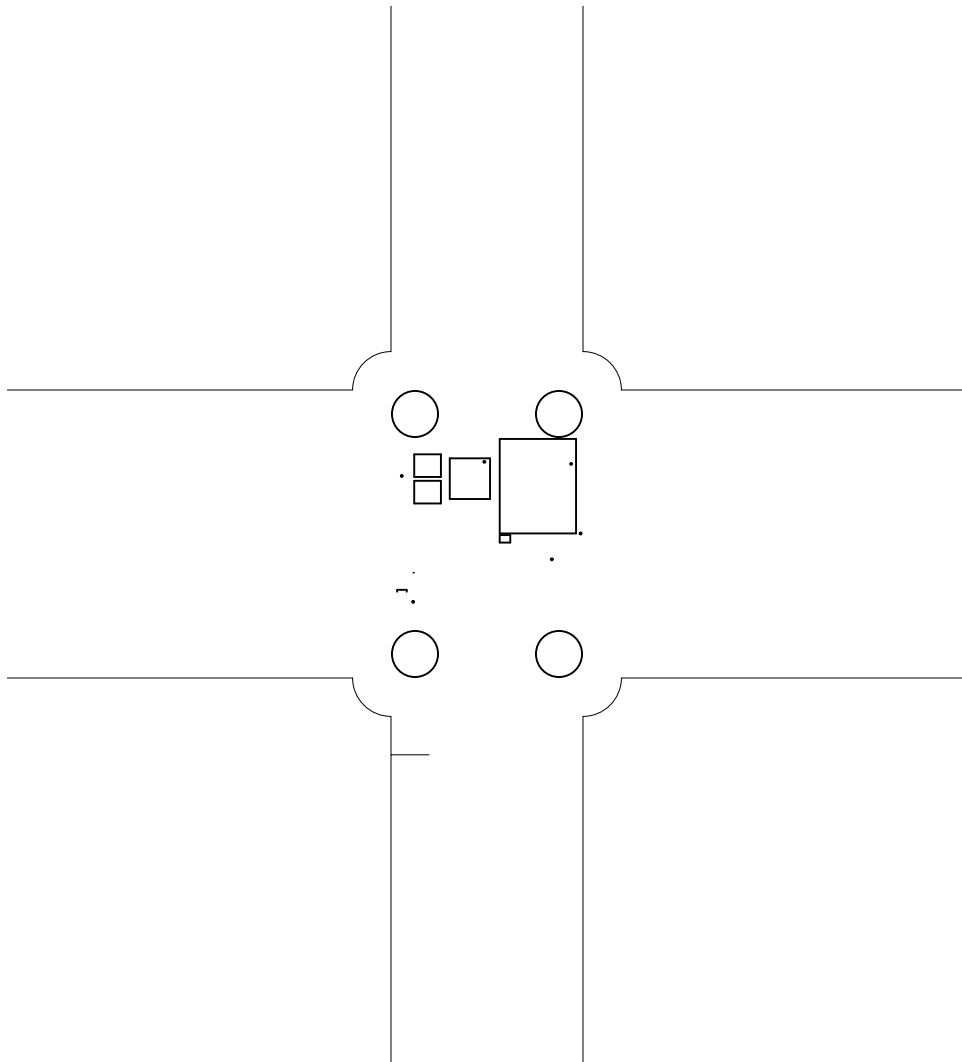


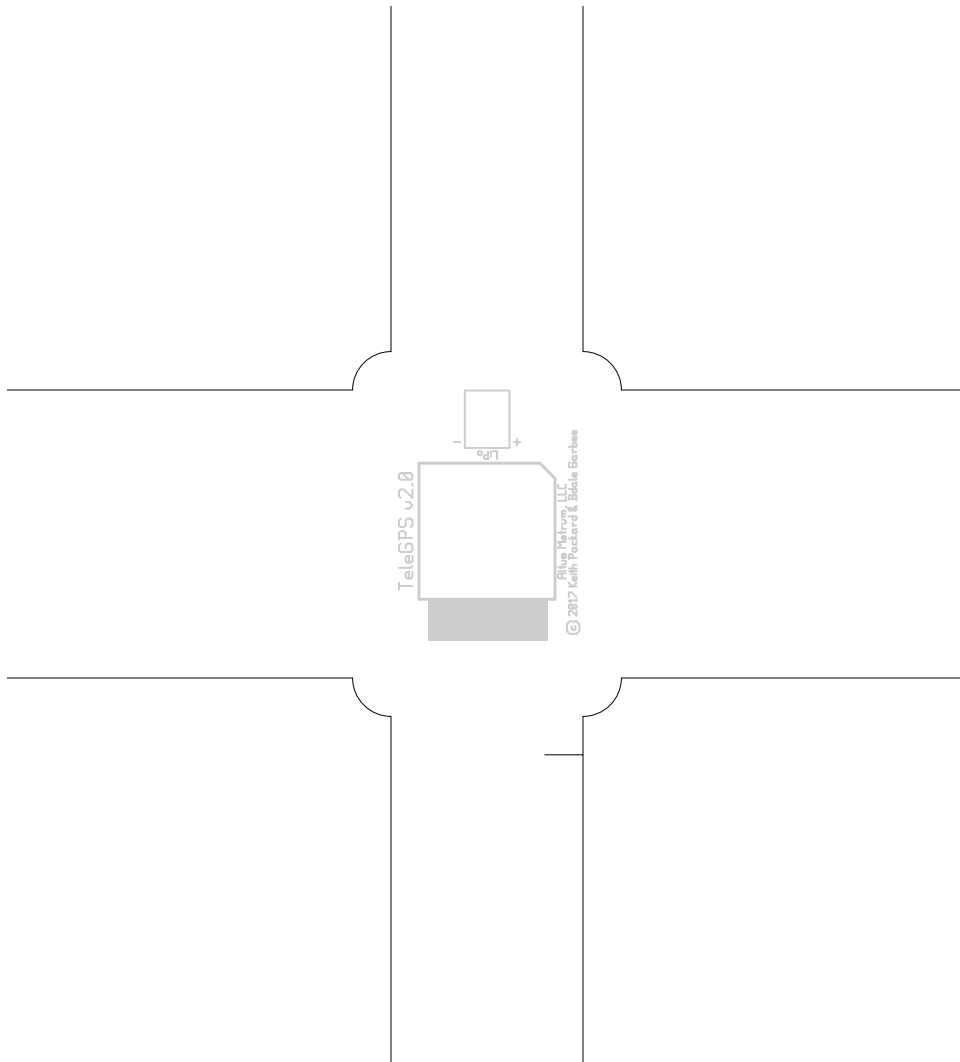


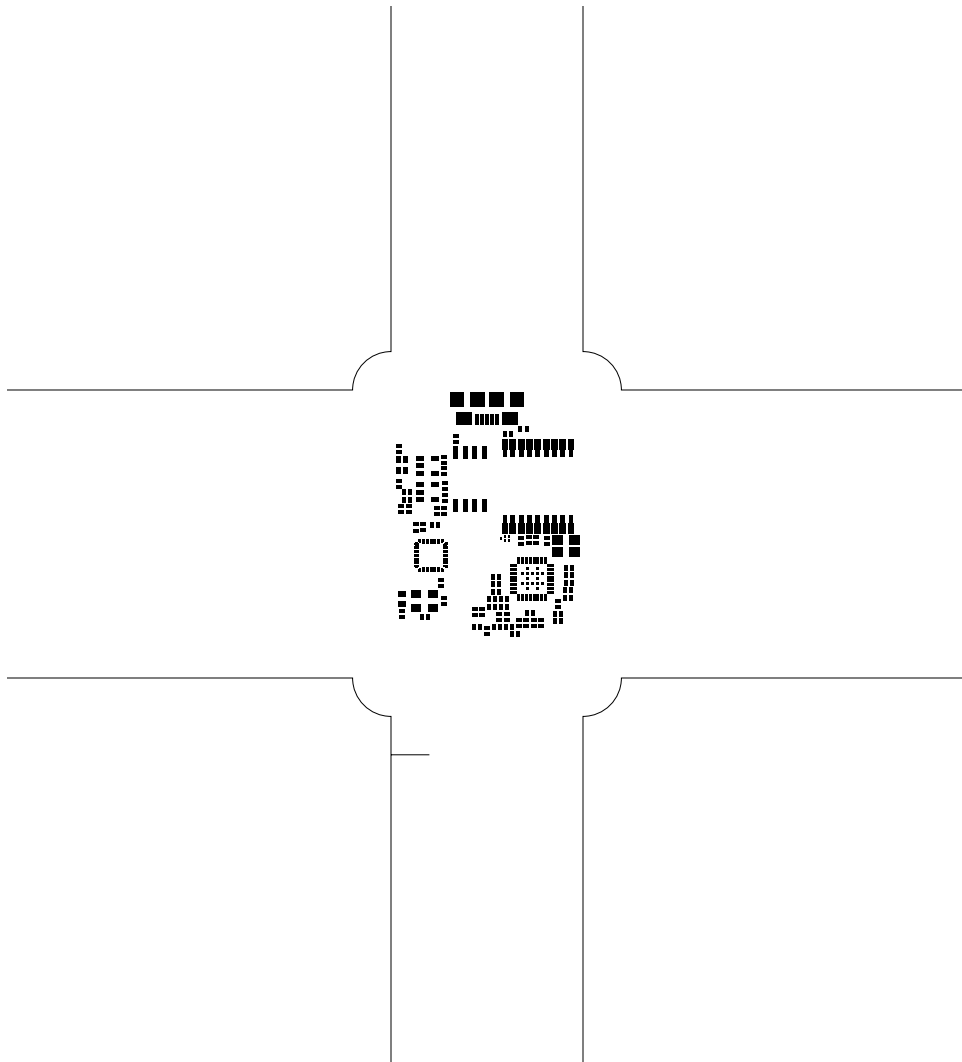


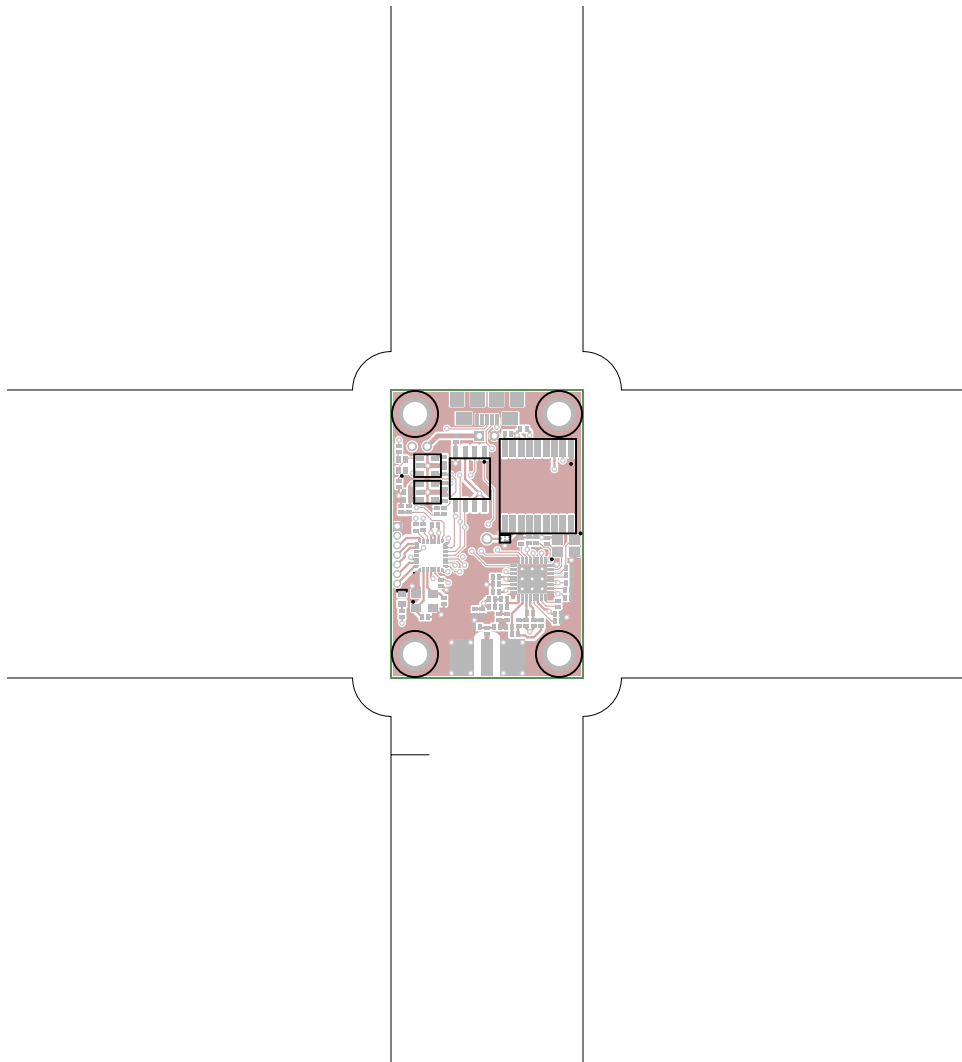


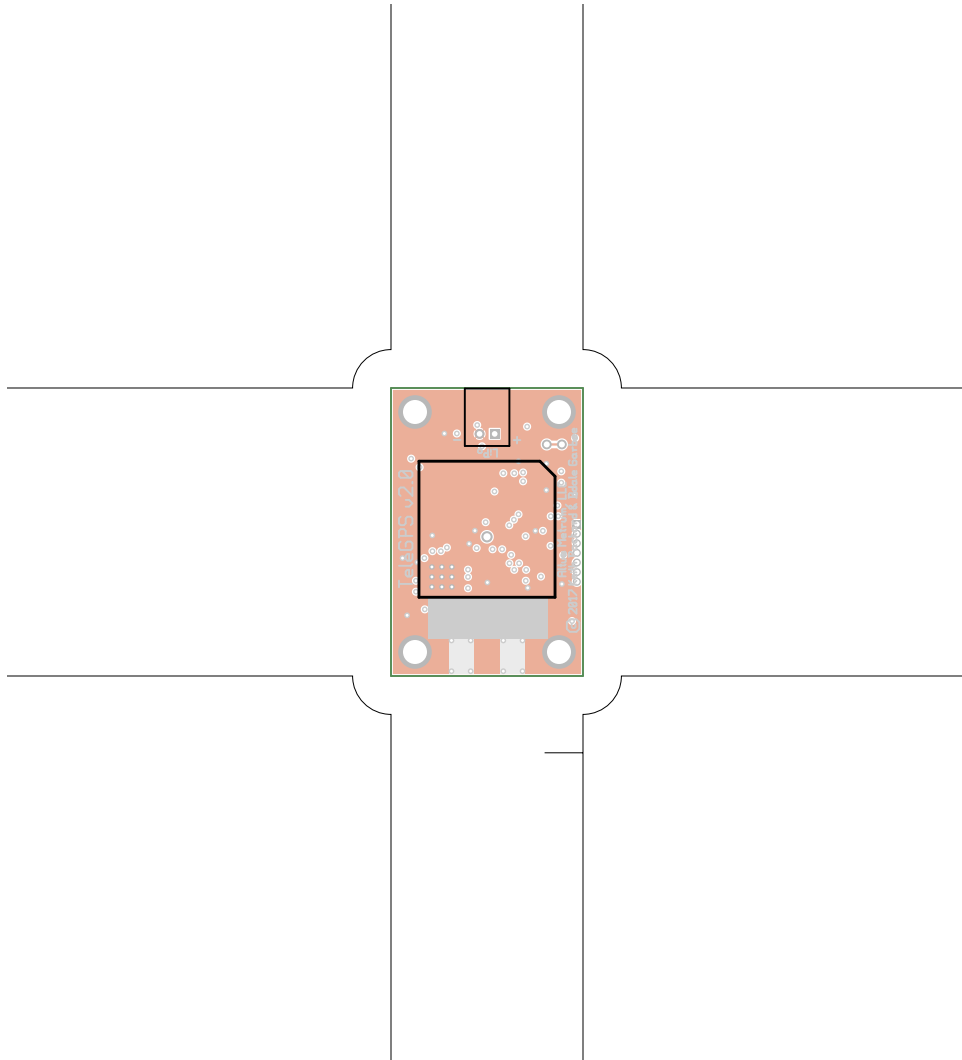










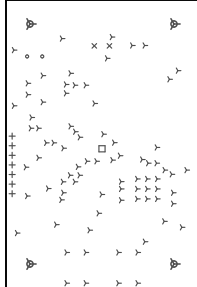


TeleGPS, bottomassembly (mirrored), scale = 1:1.000
telegps.pcb

There are 6 different drill sizes used in this layout, 98 holes total.

Symbol	Diem. (Inch)	Count	Plated?
y	0.015	82	YES
+	0.028	7	YES
x	0.030	2	YES
o	0.032	2	YES
□	0.037	1	YES
▽	0.125	4	YES

Title: TeleGPS - Fabrication Drawing
 Author: Bdale Garbee
 Date: Fri May 29 23:11:50 2020 UTC



Board outline is the centerline of this path