

1. Table of Contents (This Page)  
Created on Tue Dec 19 17:39:29 2017

2. top

3. bottom

4. outline

5. plated-drill

6. componentmask

7. soldermask

8. topsilk

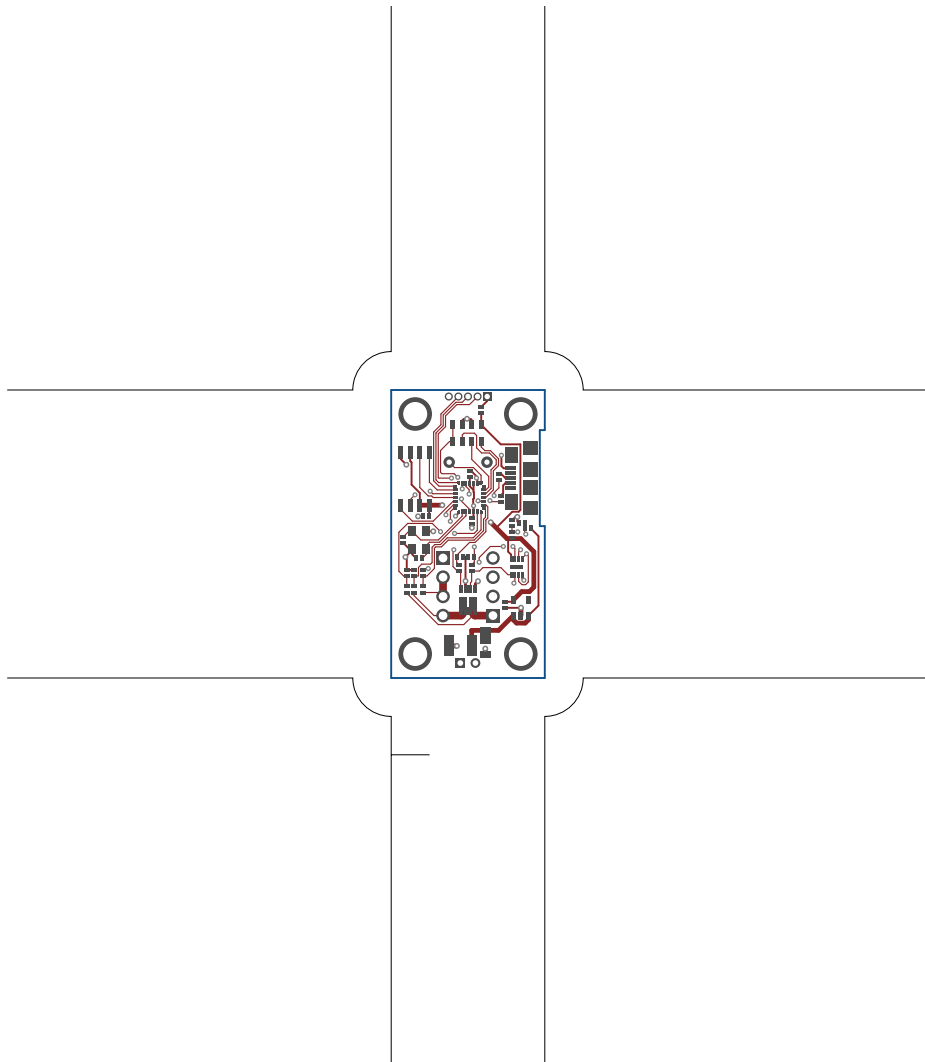
9. bottomsilk

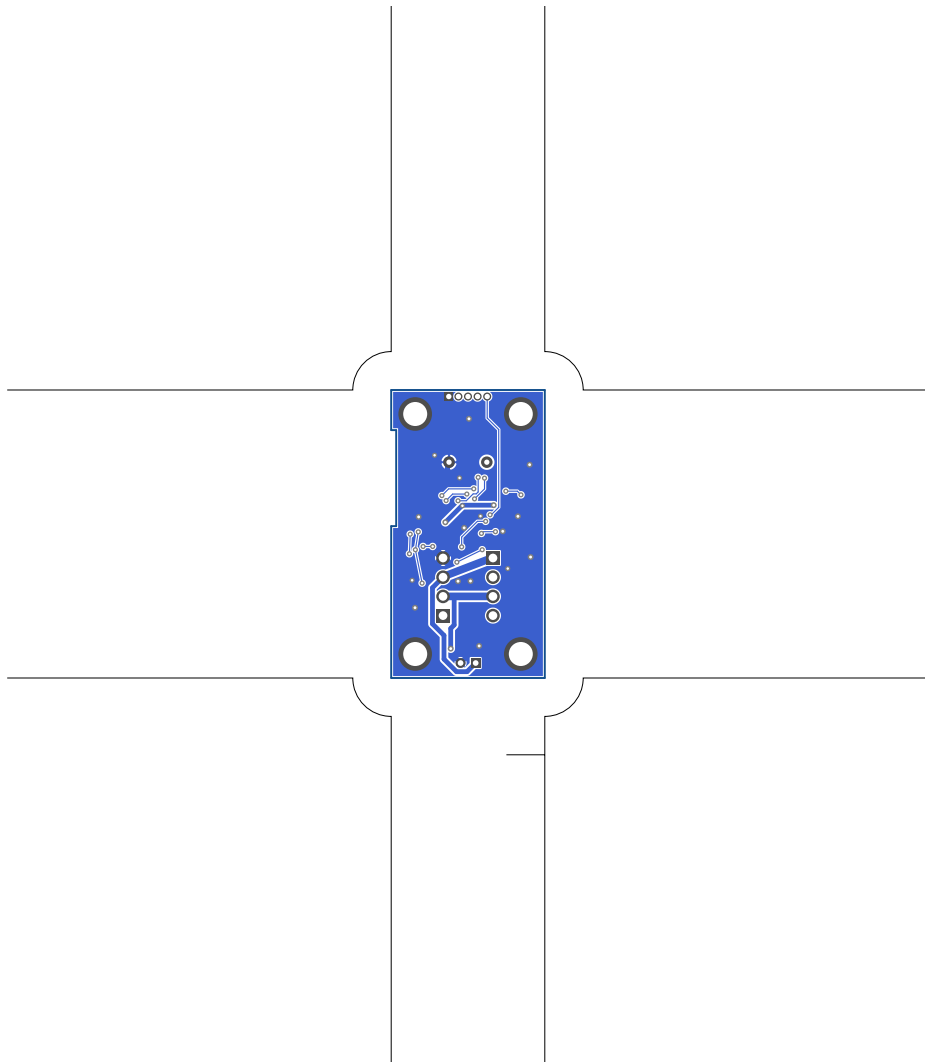
10. toppaste

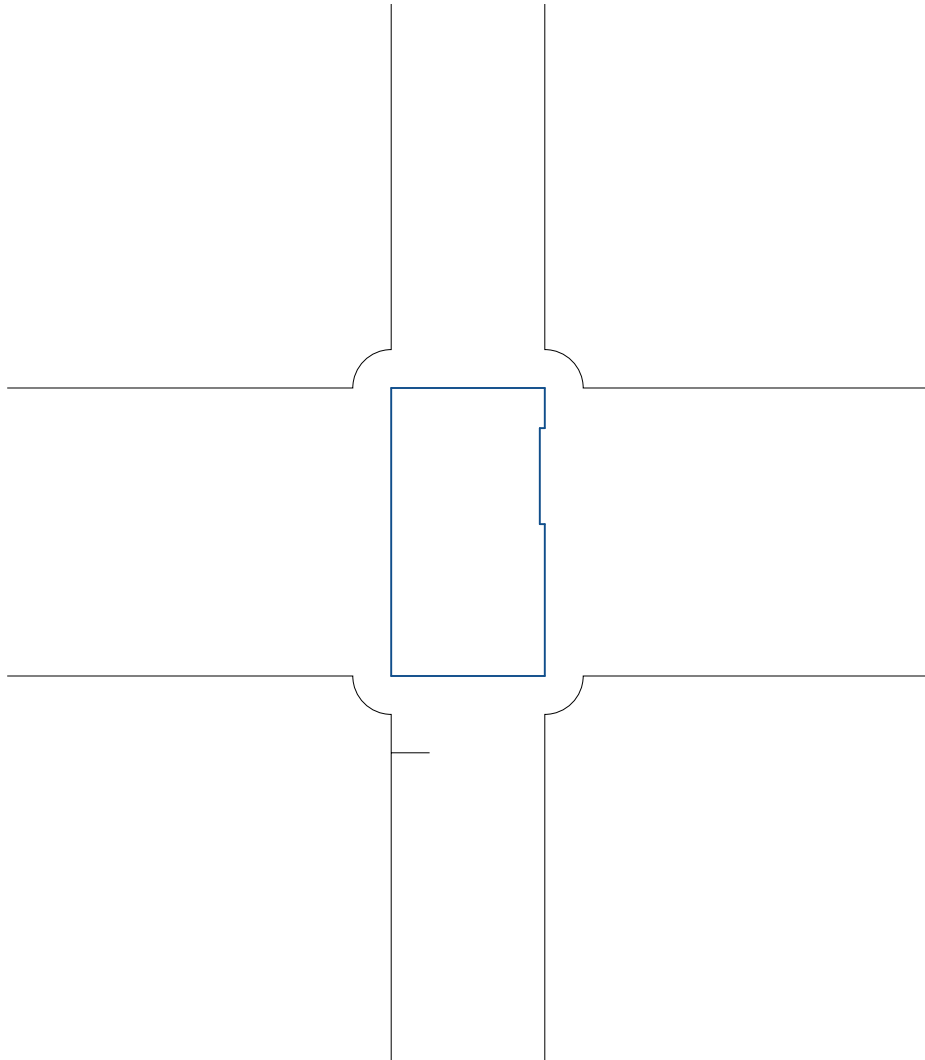
11. topassembly

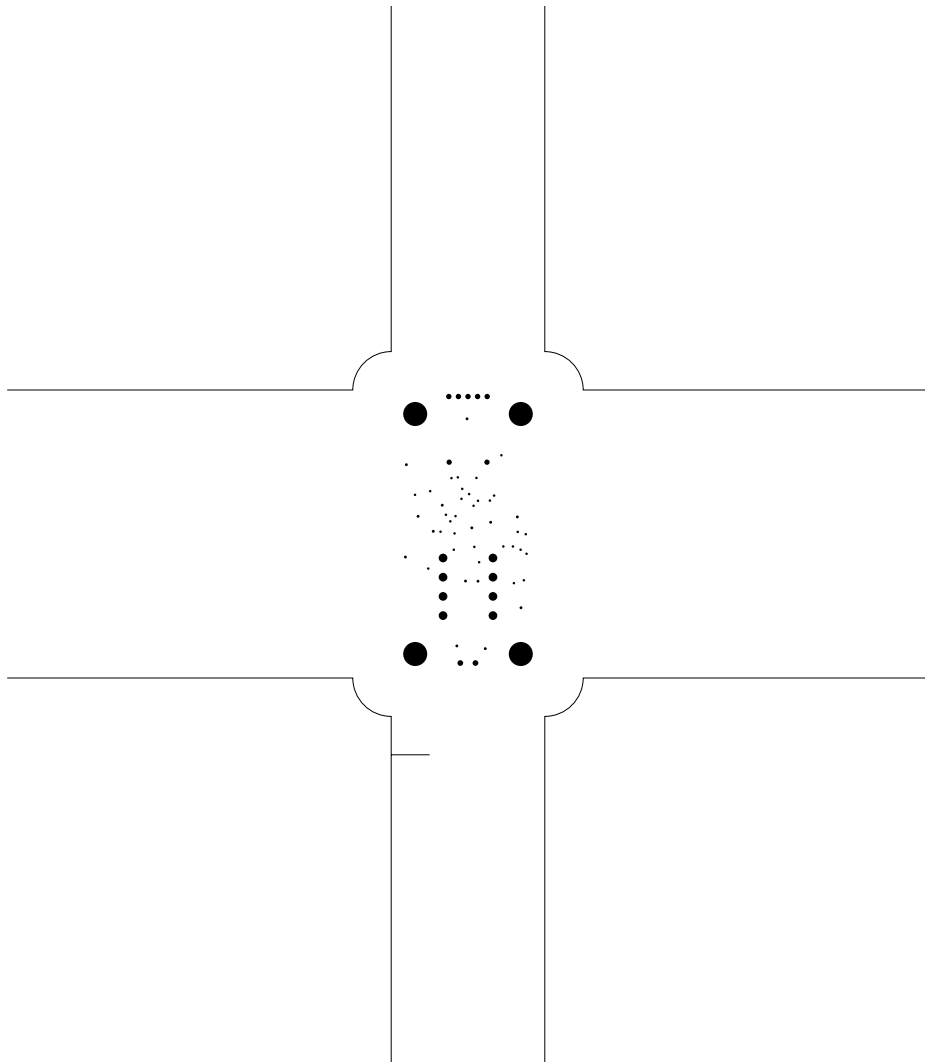
12. bottomassembly

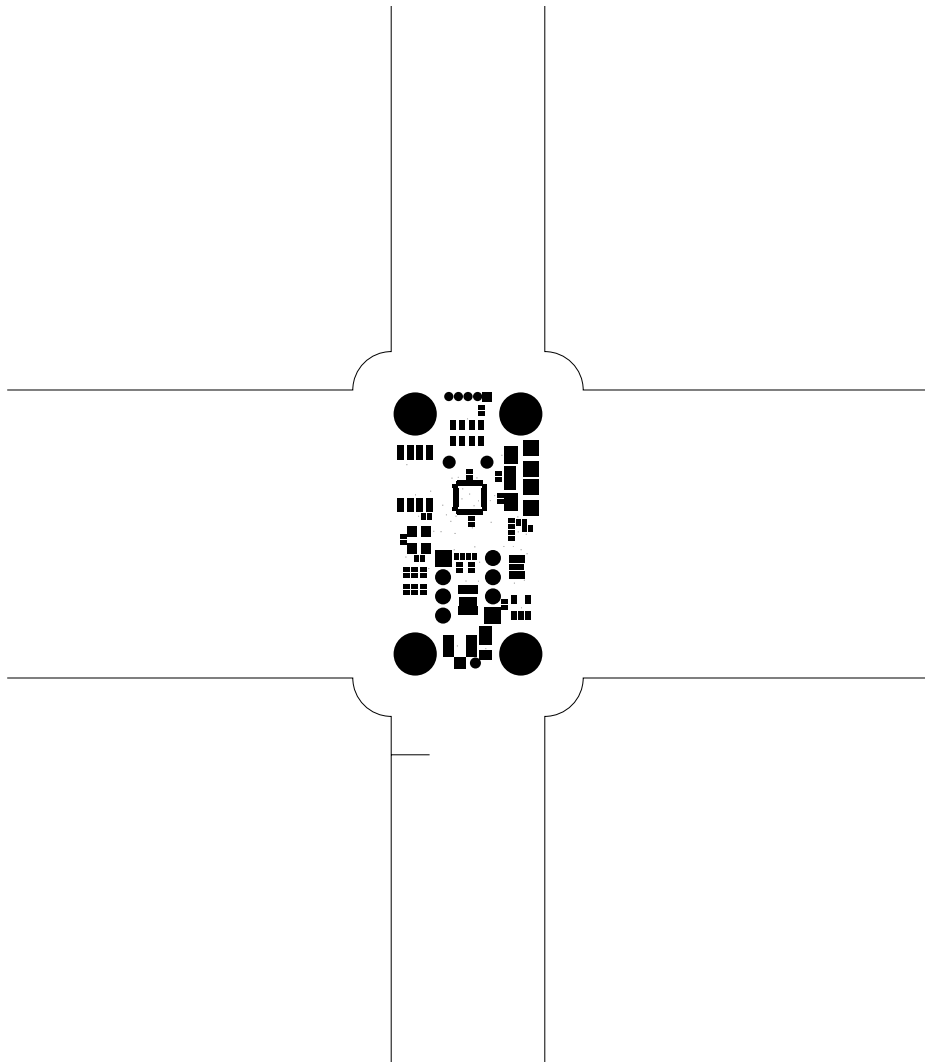
13. fab

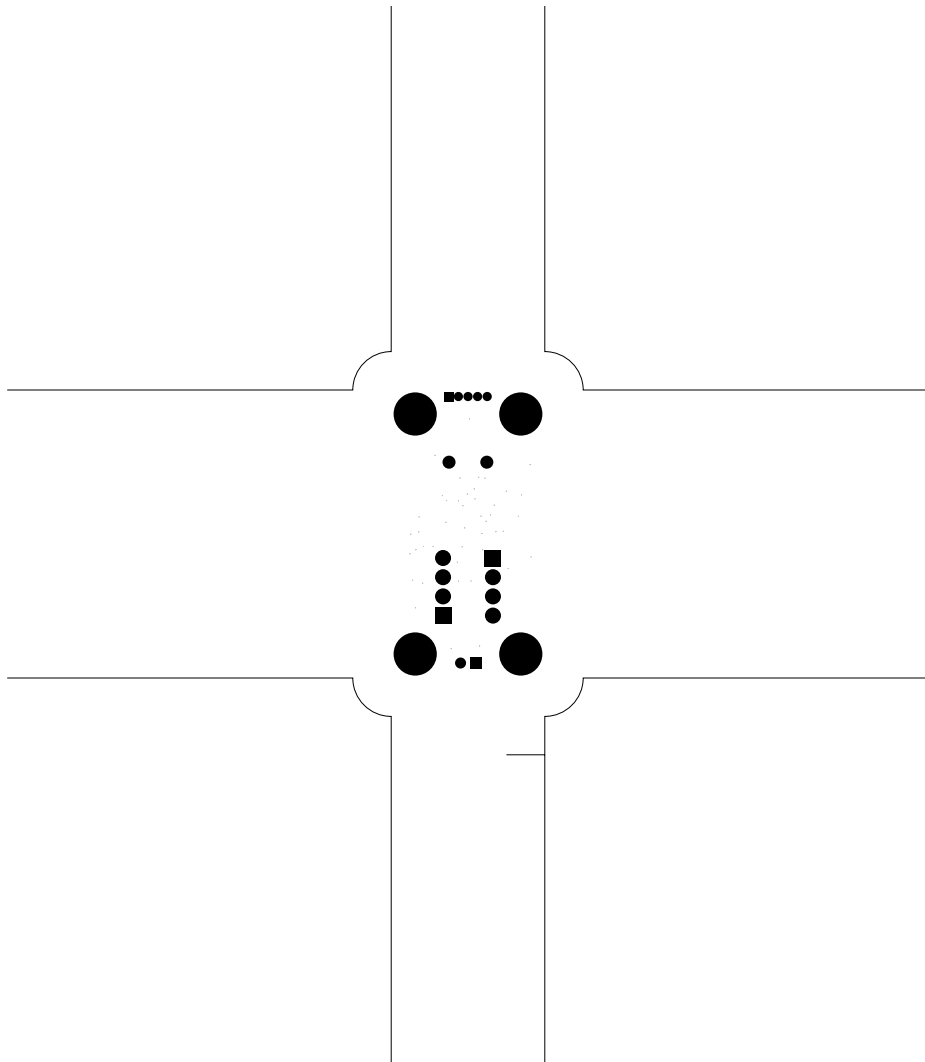


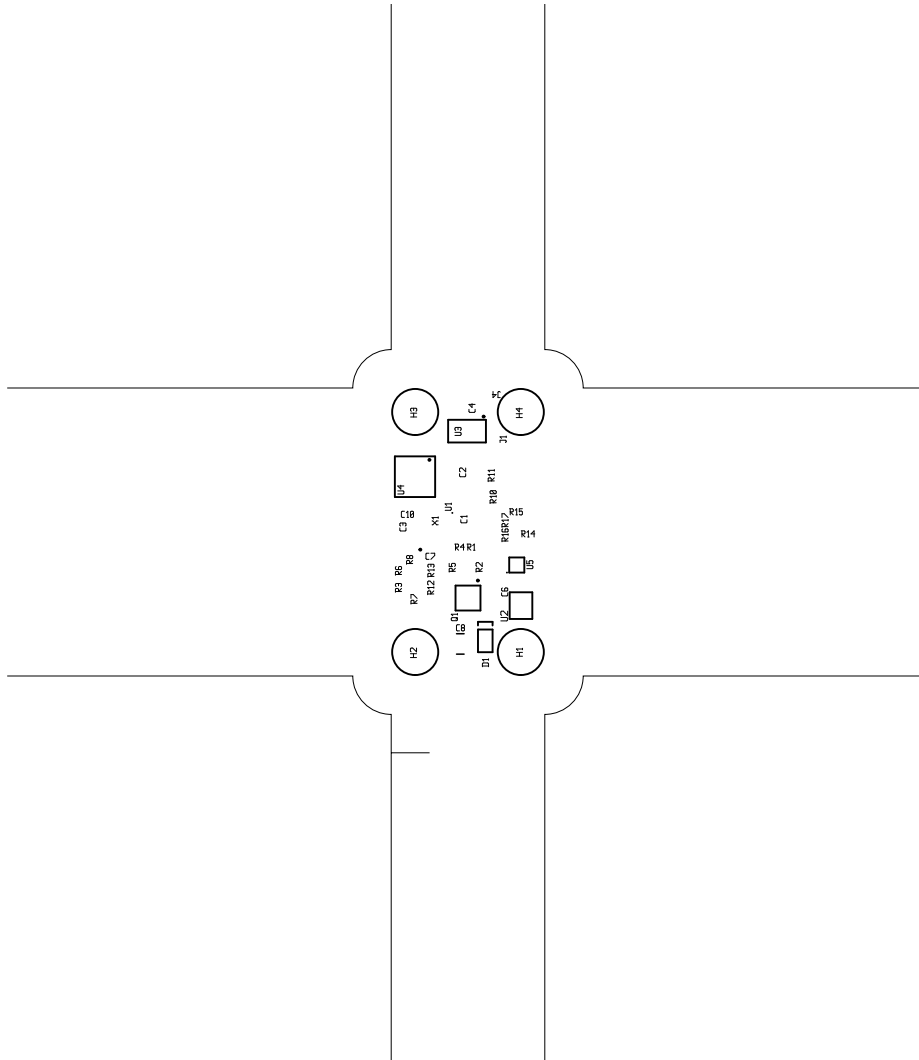




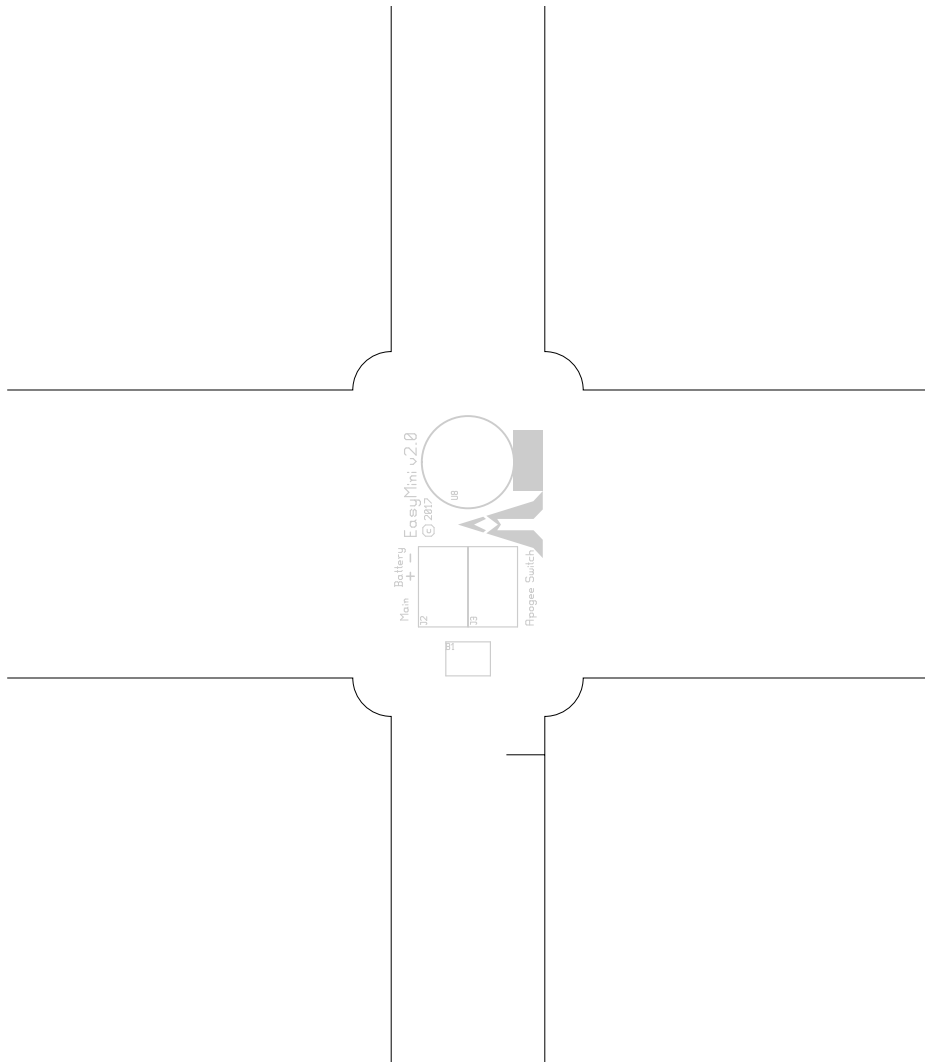


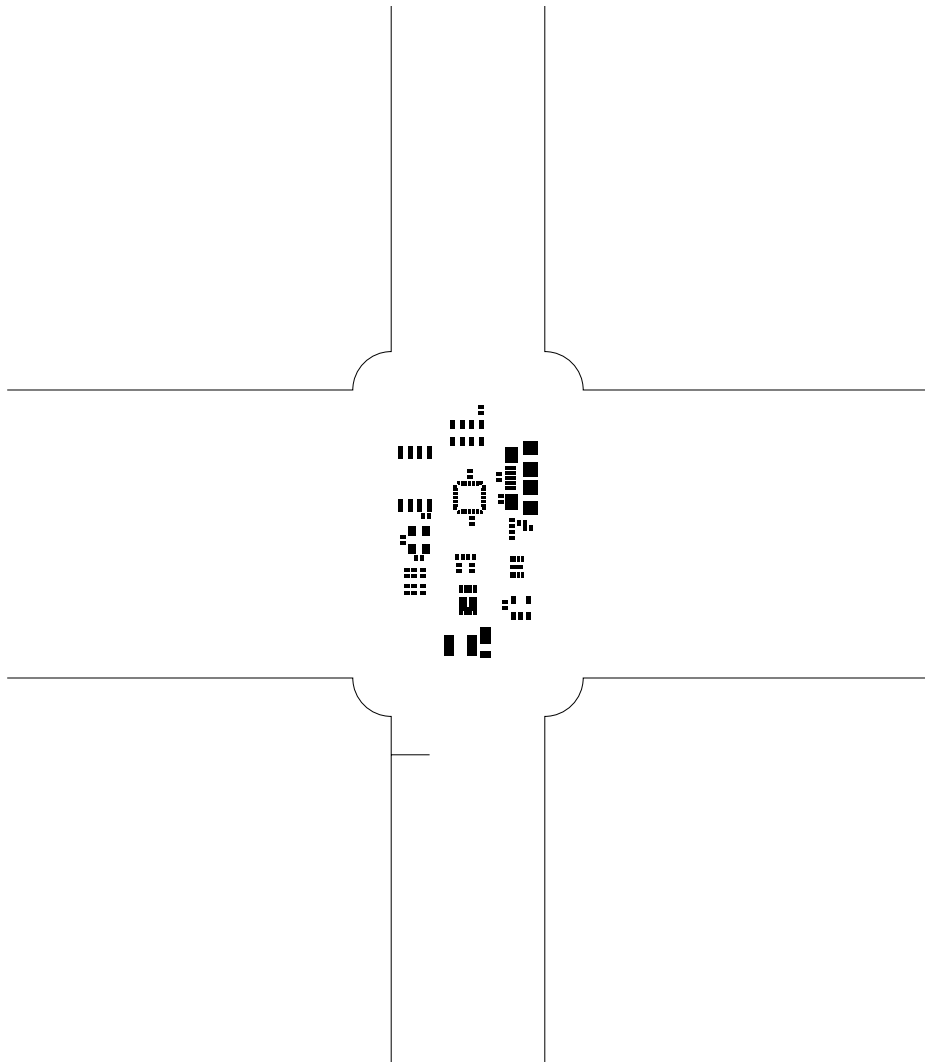


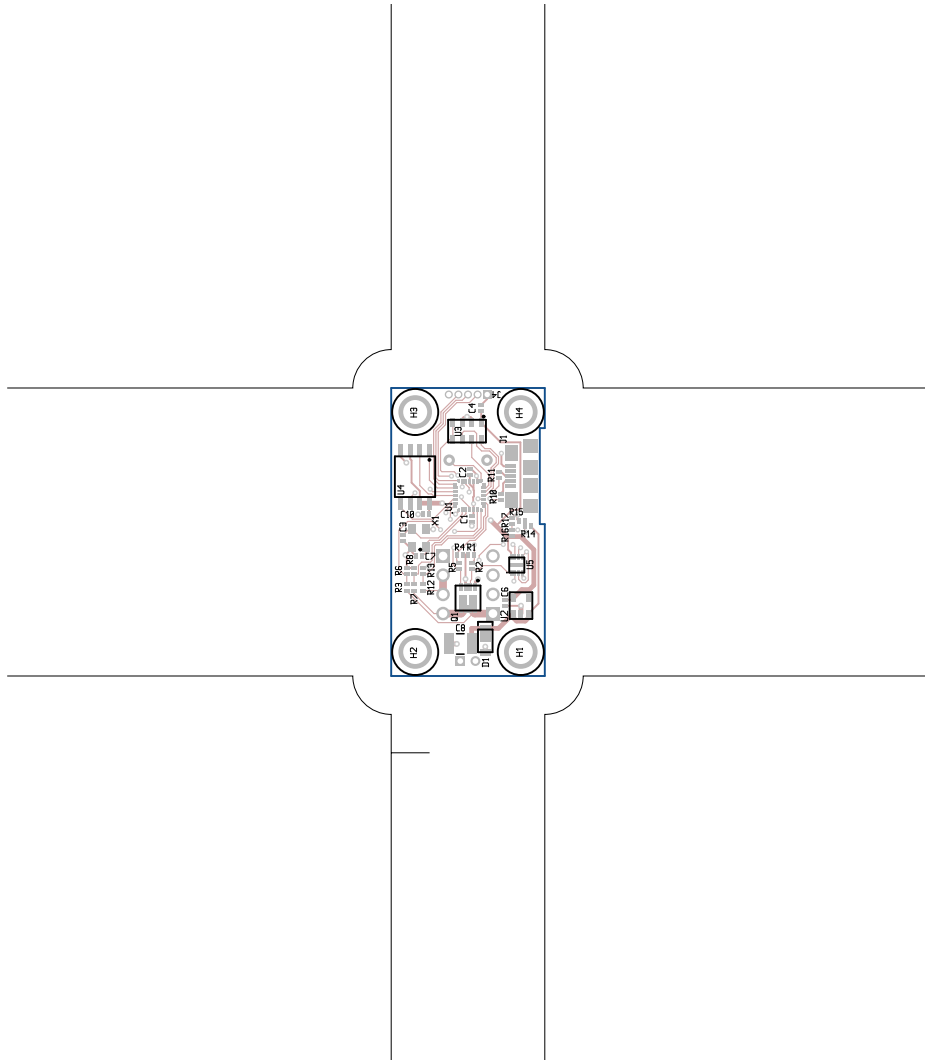


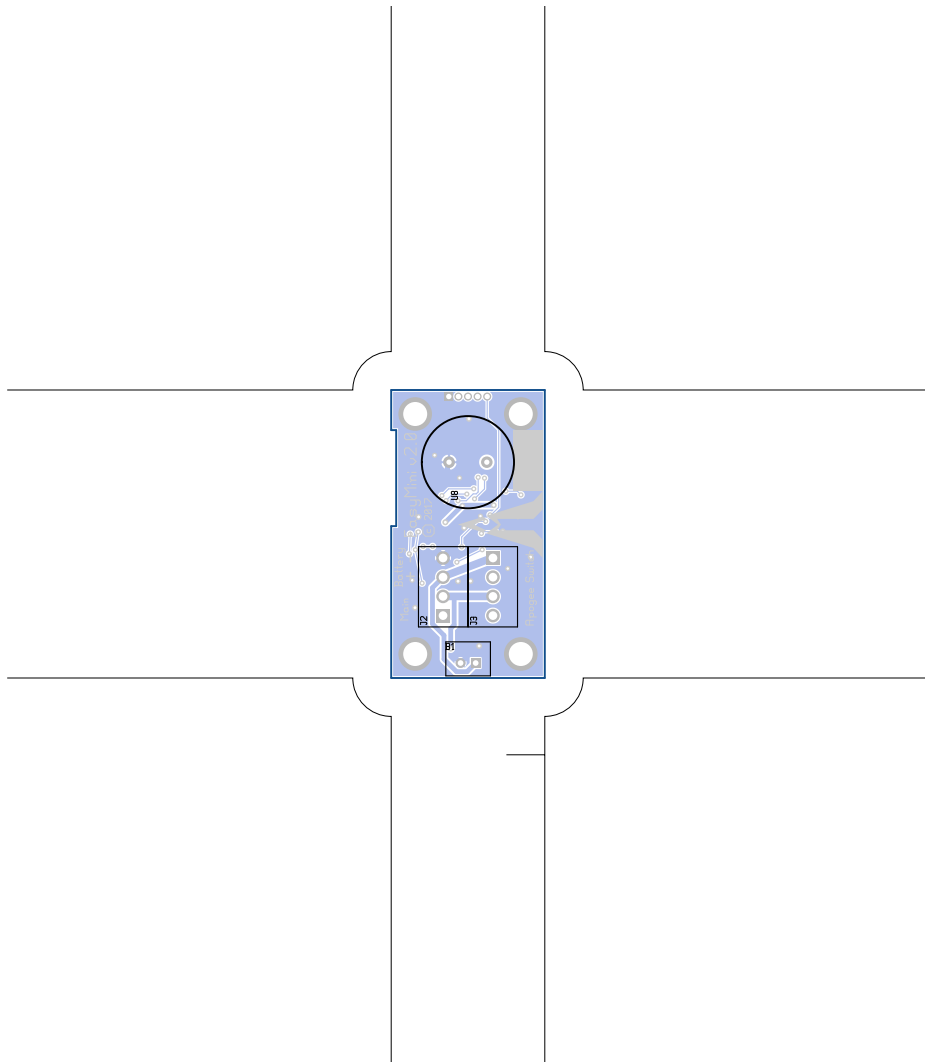








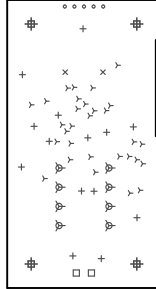




There are 7 different drill sizes used in this layout, 65 holes total.

Symbol	Diam. (Inch)	Count	Plated?
γ	0.013	30	YES
+	0.015	14	YES
x	0.028	2	YES
o	0.028	5	YES
□	0.030	2	YES
ψ	0.045	8	YES
⊕	0.125	4	YES

Title: EasyMini - Fabrication Drawing  
 Author: Keith Packard  
 Date: Wed Dec 20 01:39:30 2017 UTC



Board outline is the centerline of this path