

1. Table of Contents (This Page)
Created on Wed Oct 30 17:09:18 2013

2. top

3. bottom

4. outline

5. plated-drill

6. componentmask

7. soldermask

8. topsilk

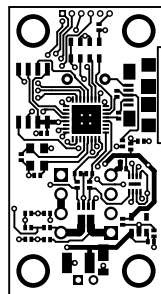
9. bottomsilk

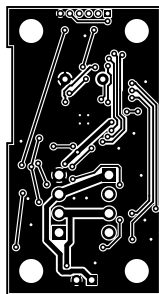
10. toppaste

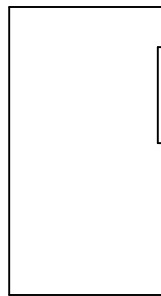
11. topassembly

12. bottomassembly

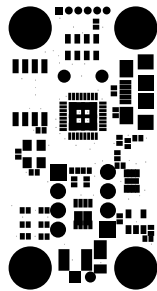
13. fab

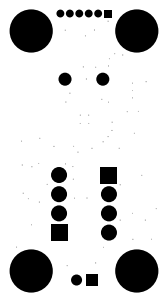


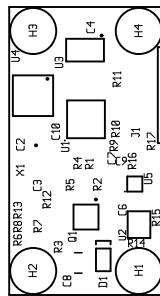


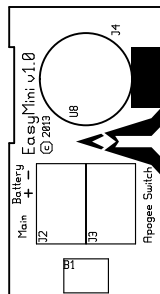


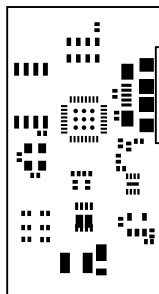


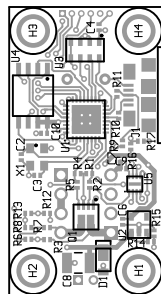


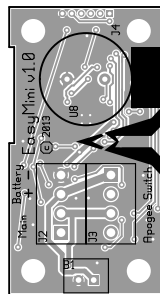










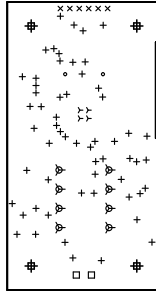


EasyMini, bottomassembly (mirrored), scale = 1:1.000
easymini.pcb

There are 7 different drill sizes used in this layout, 84 holes total.

Symbol	Diam. (Inch)	Count	Plated?
γ	0.012	4	YES
+	0.015	58	YES
x	0.020	6	YES
°	0.028	2	YES
□	0.030	2	YES
ψ	0.045	8	YES
⊕	0.125	4	YES

Title: EasyMini - Fabrication Drawing
 Author: Bdale Garbee
 Date: Wed 30 Oct 2013 11:09:18 PM GMT UTC



Board outline is the centerline of this path