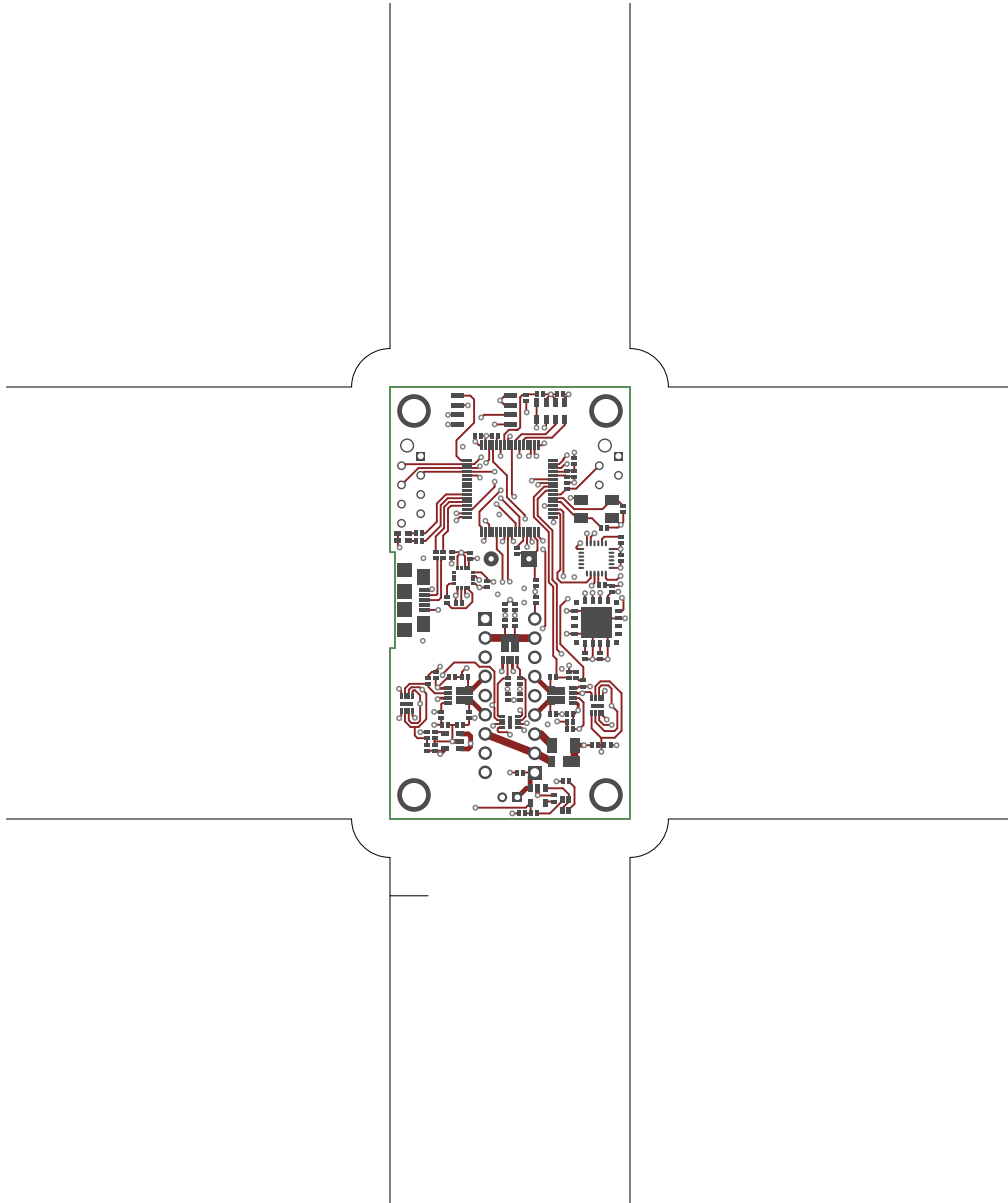
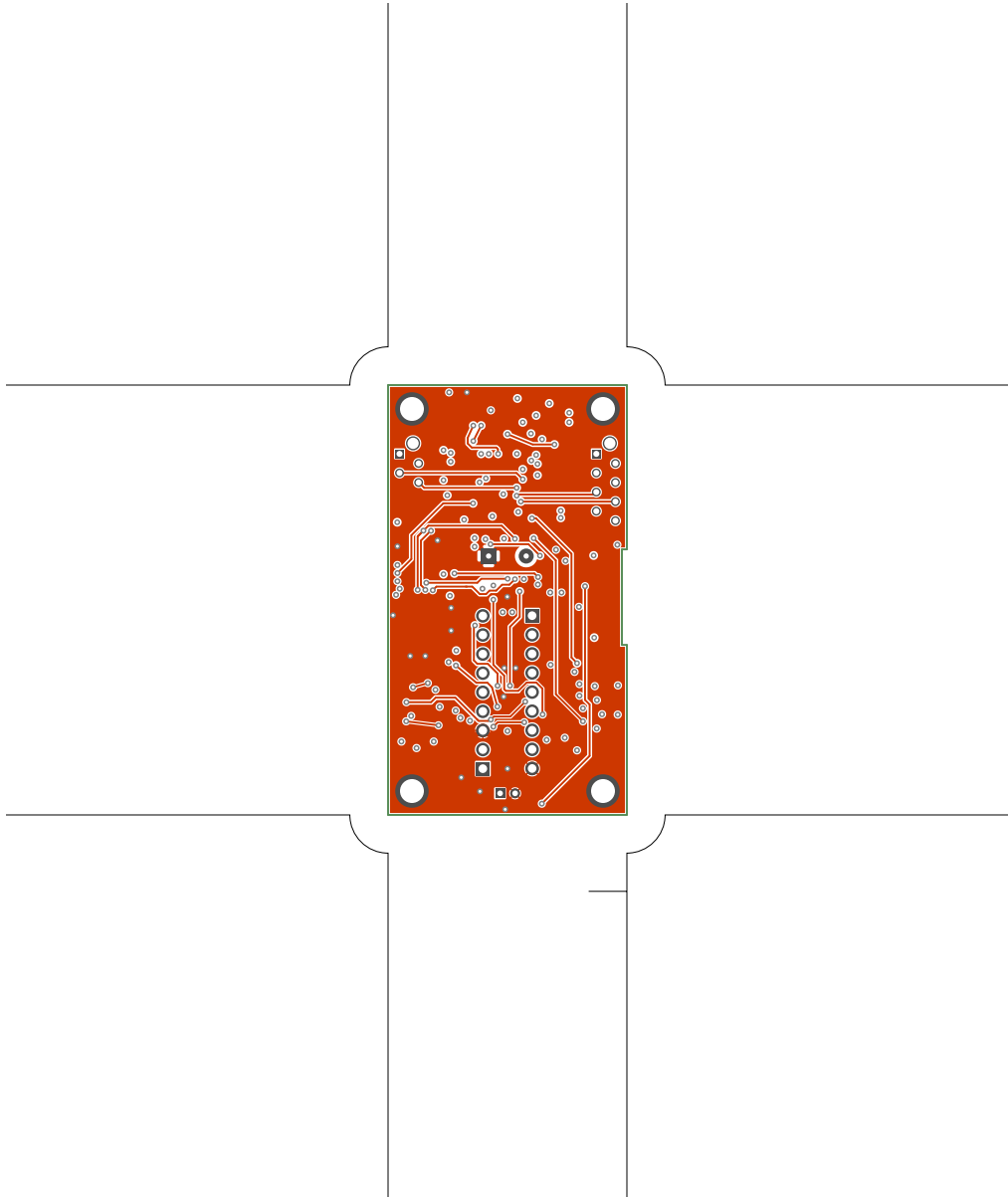


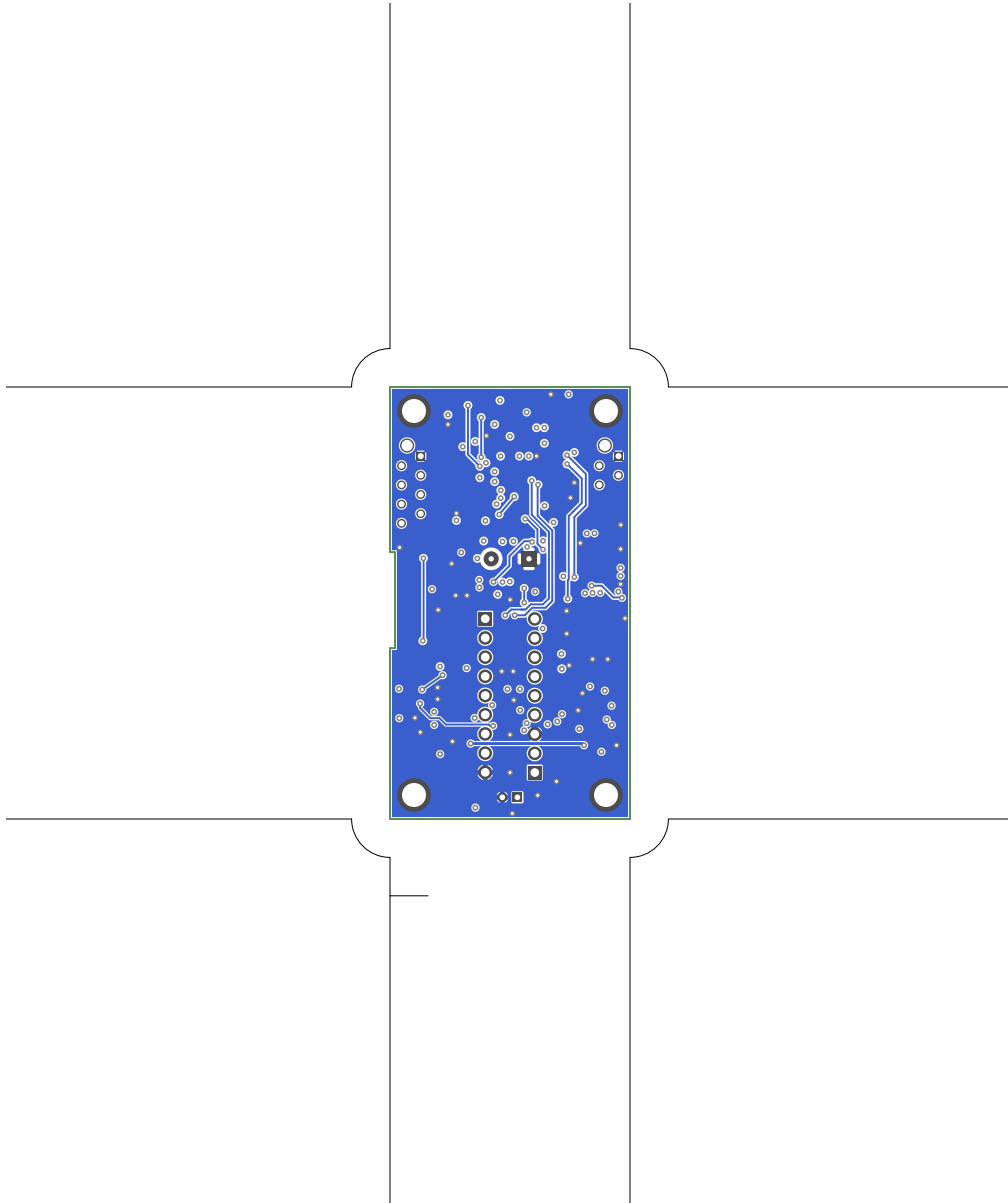
1. Table of Contents (This Page)

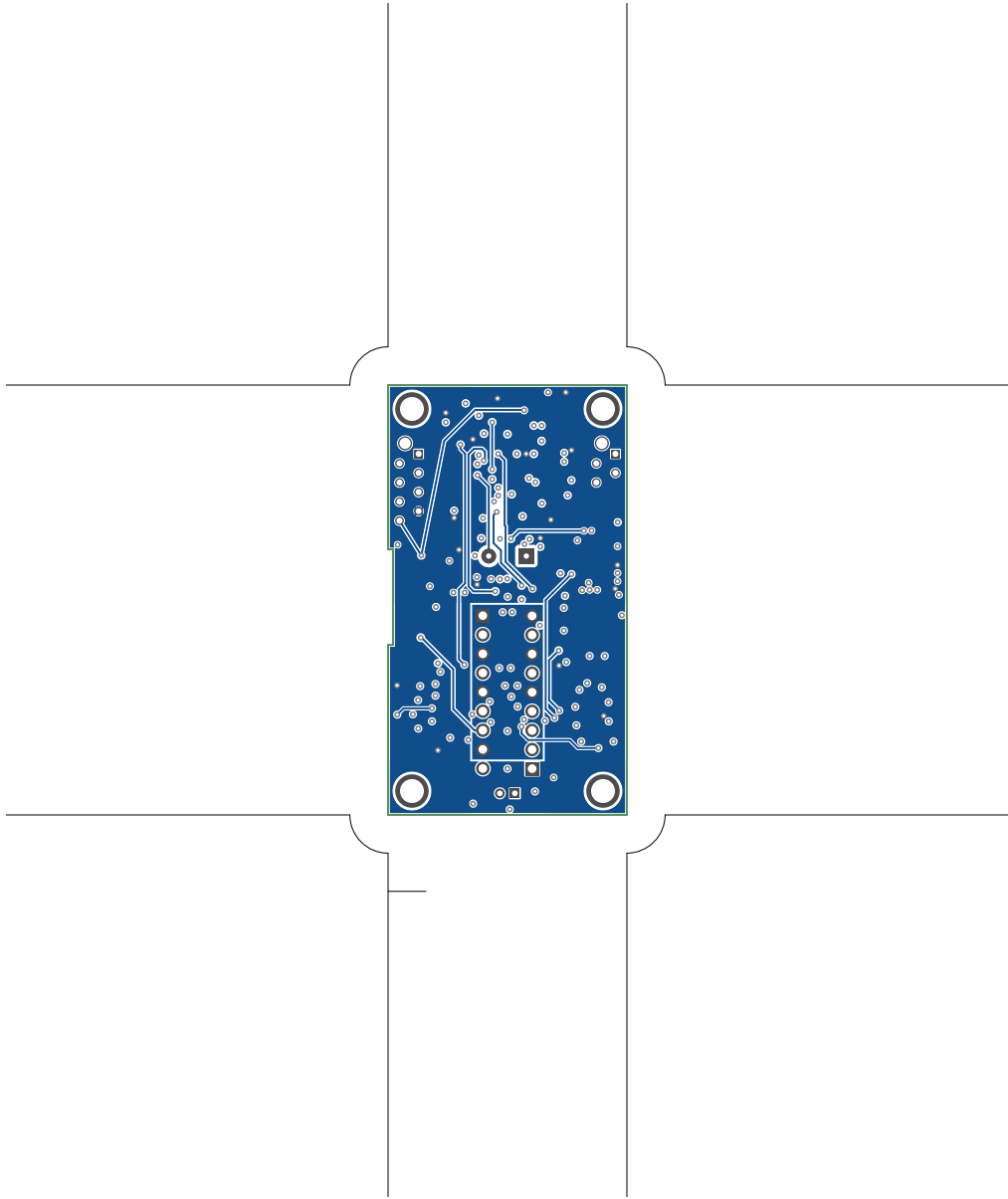
Created on Sun Dec 12 17:19:55 2021

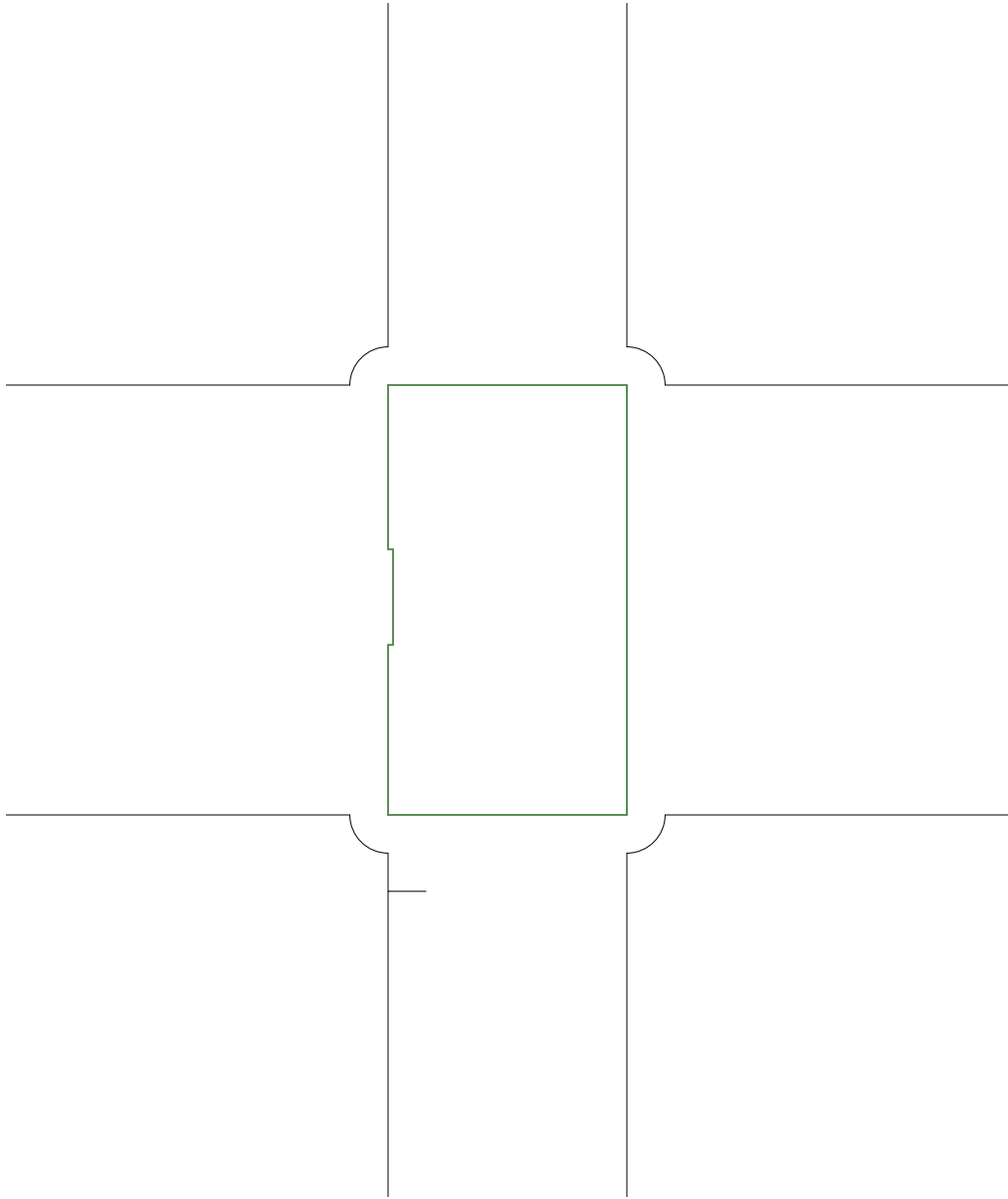
2. top
3. bottom
4. GND plane
5. power plane
6. outline
7. plated-drill
8. componentmask
9. soldermask
10. topsilk
11. bottomsilk
12. toppaste
13. topassembly
14. bottomassembly
15. fab

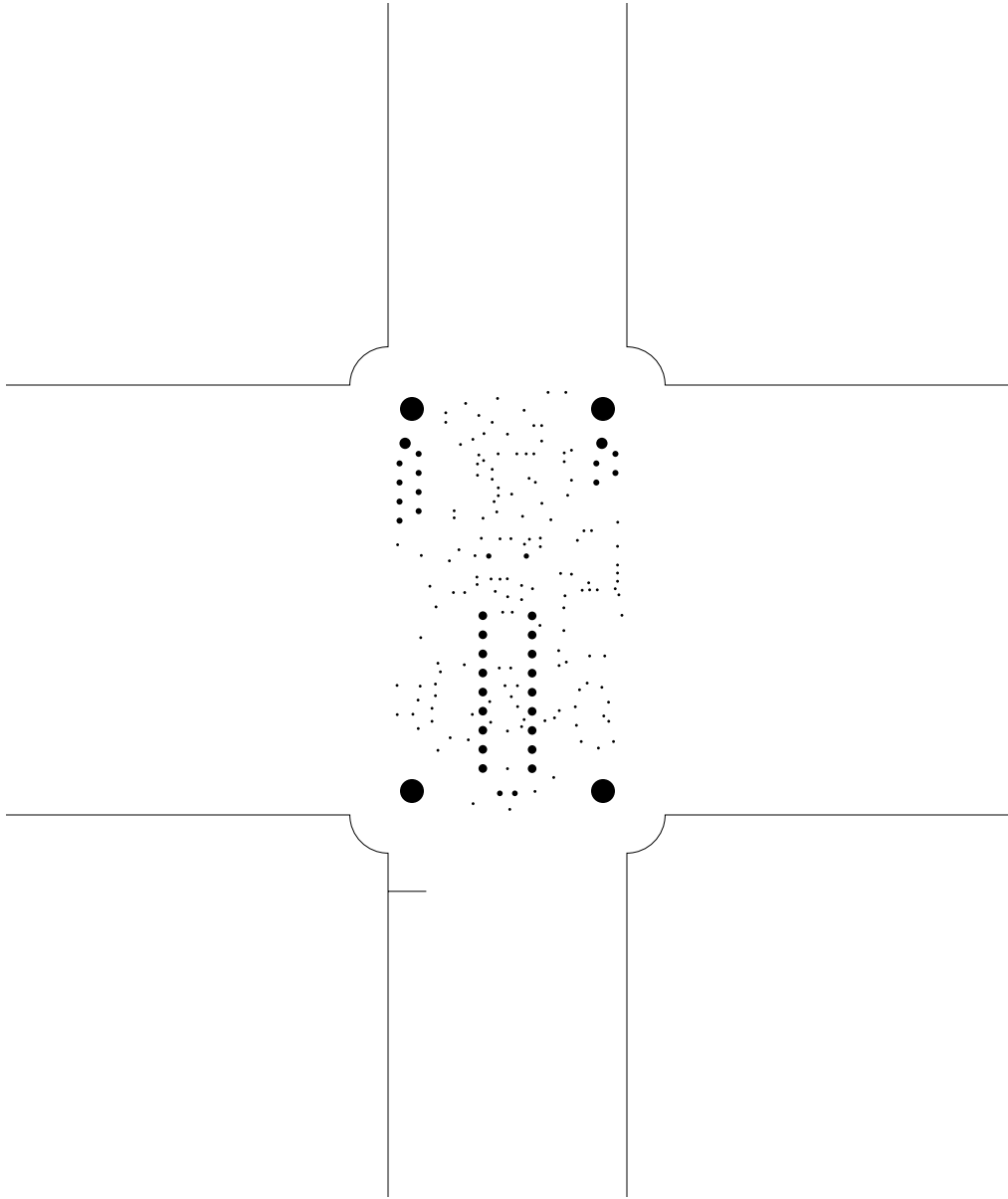


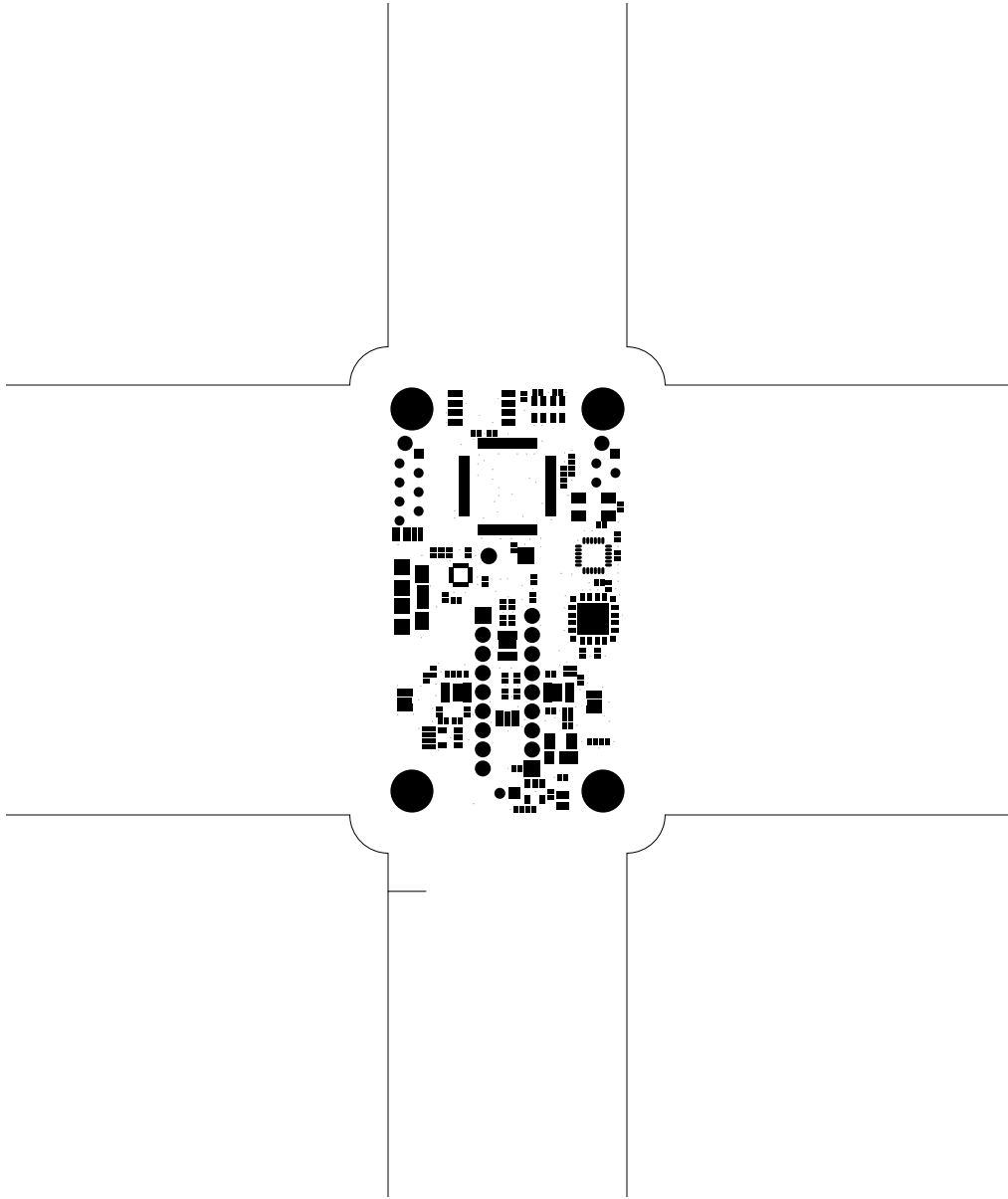




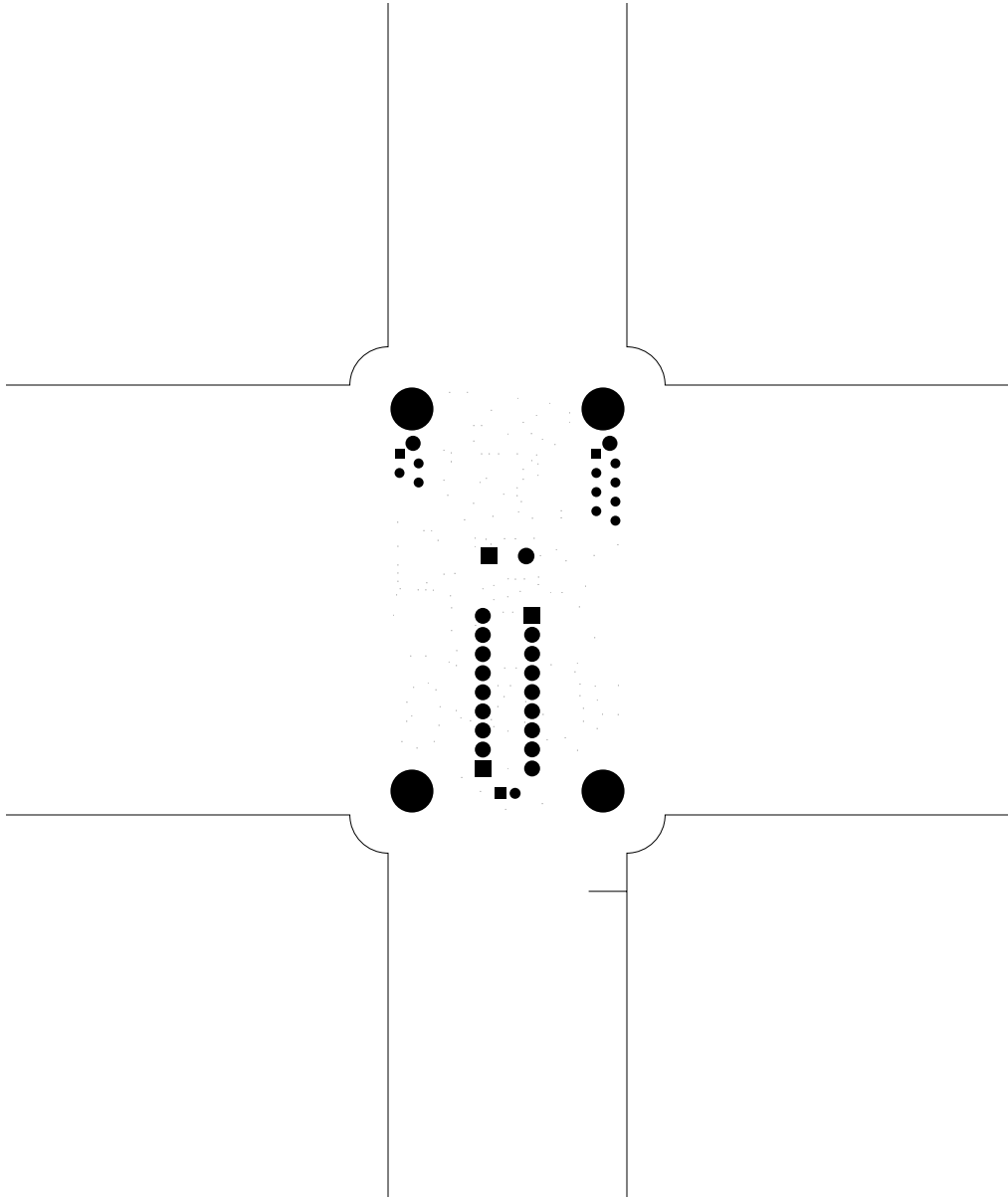


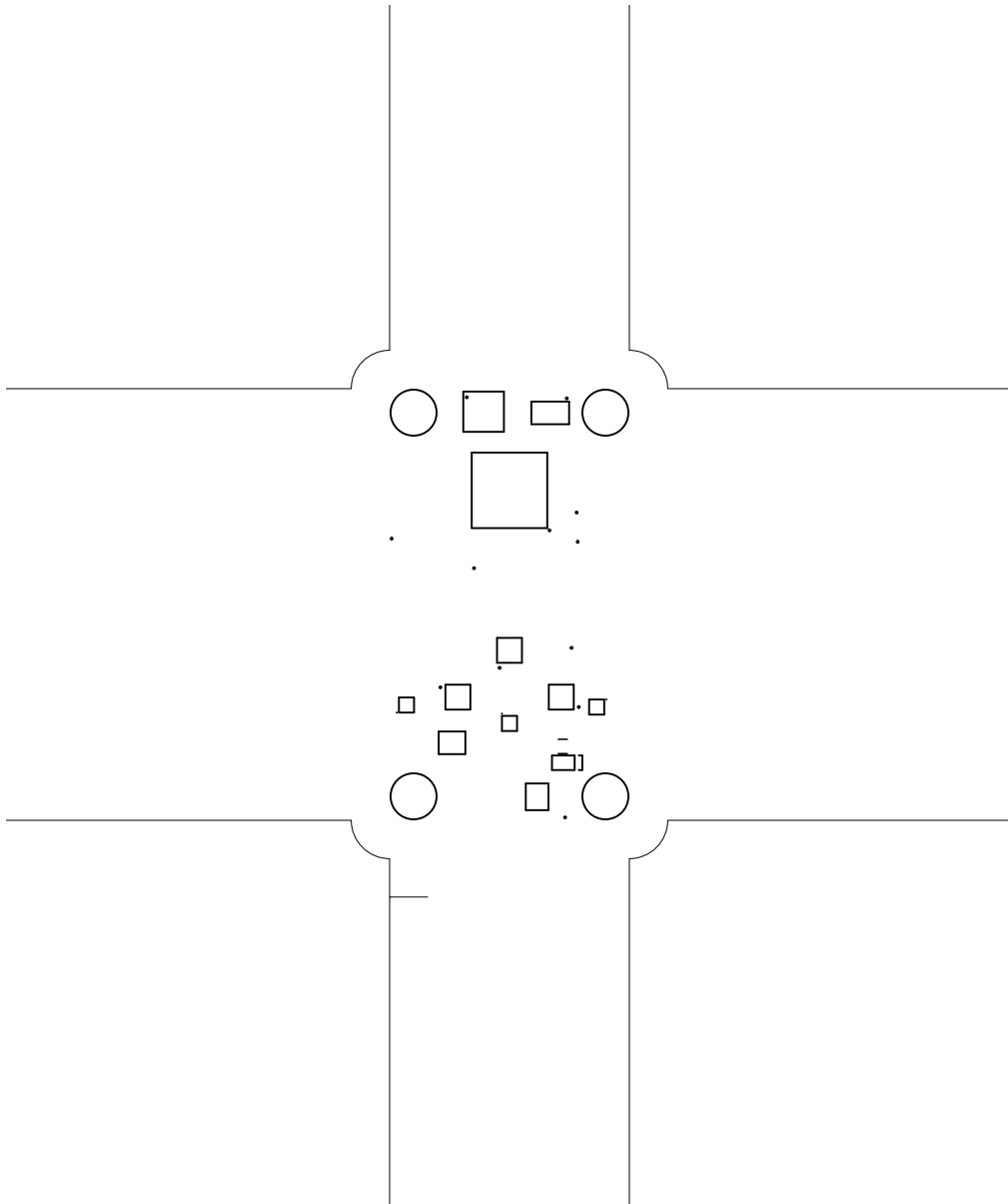


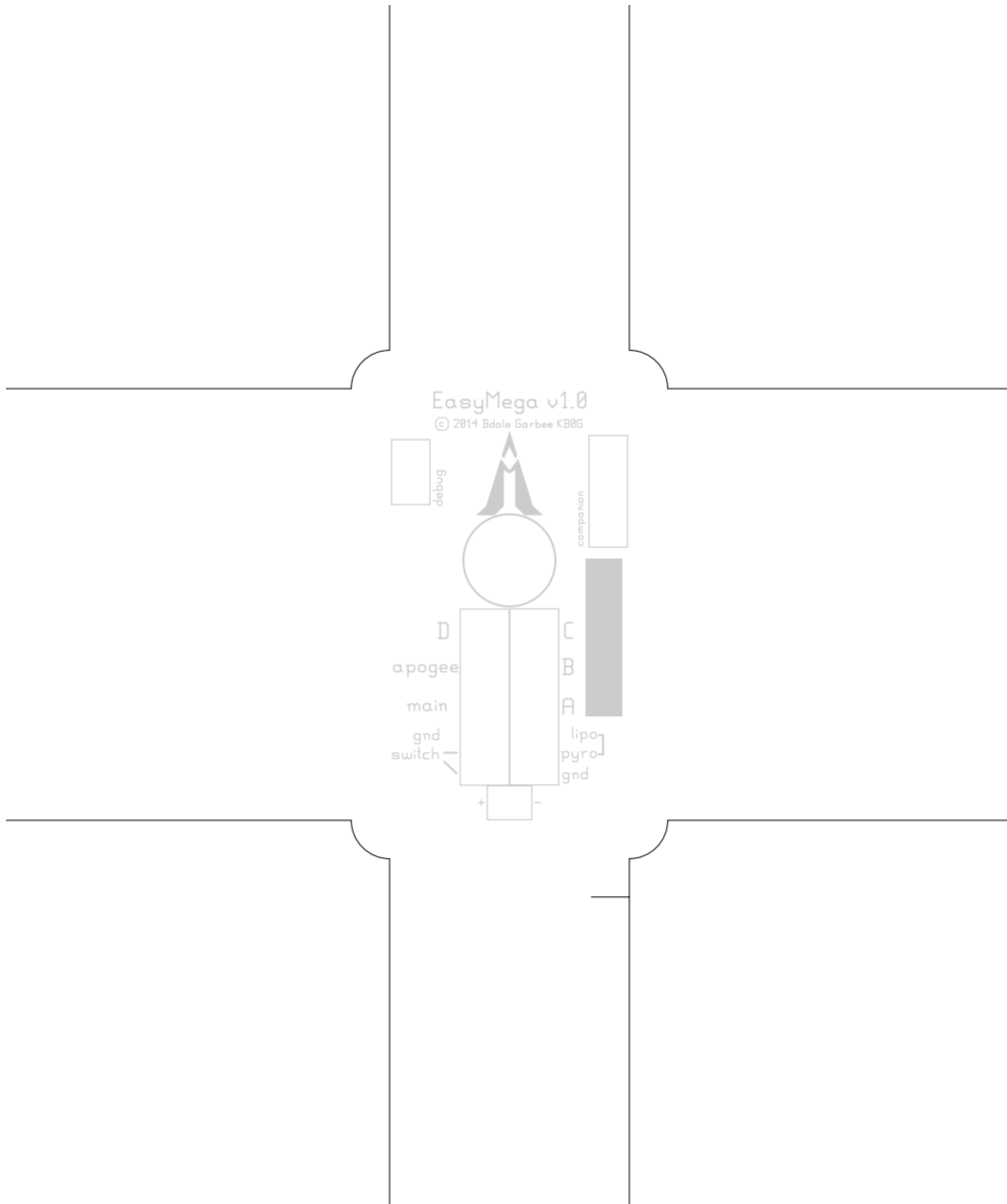


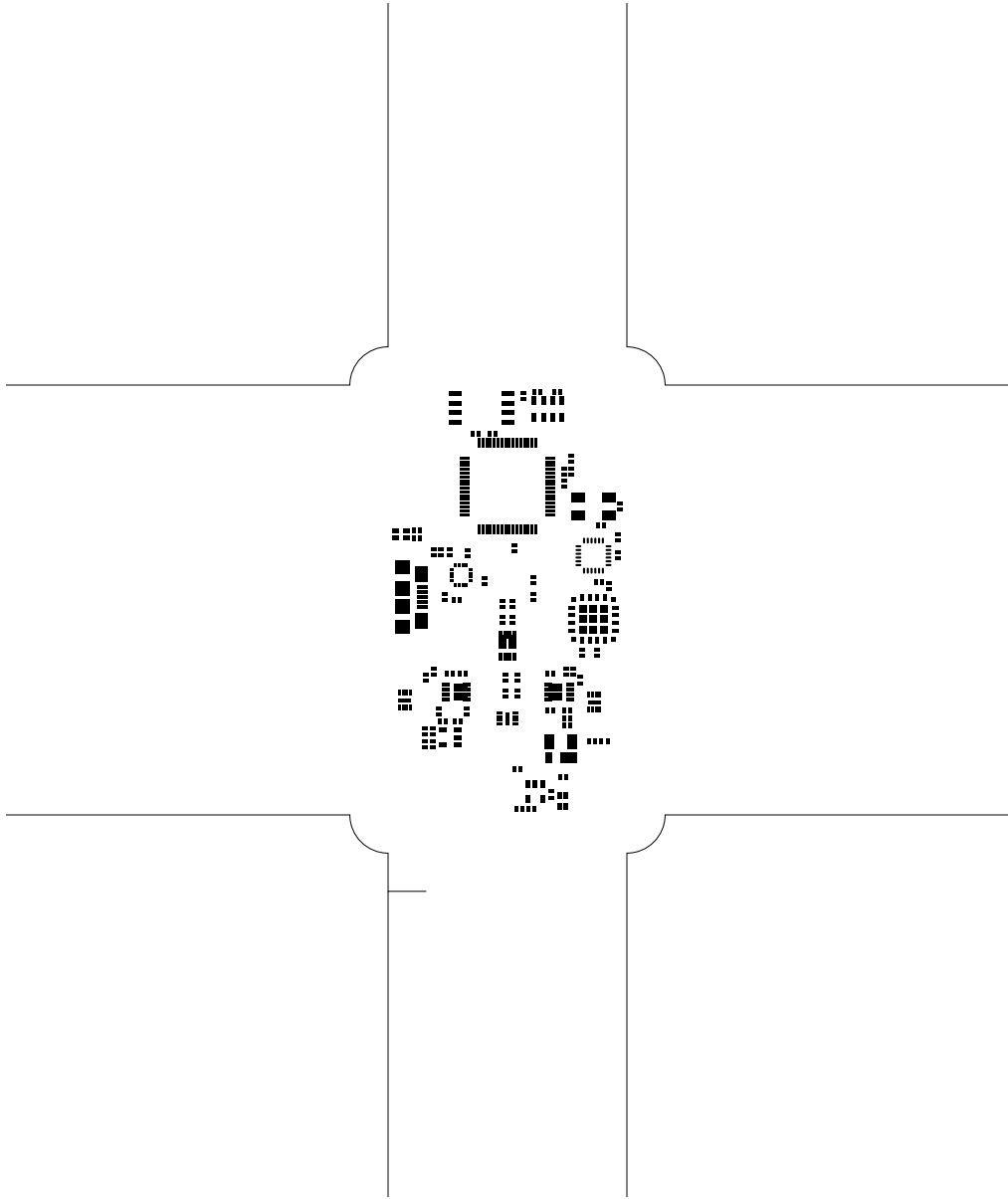


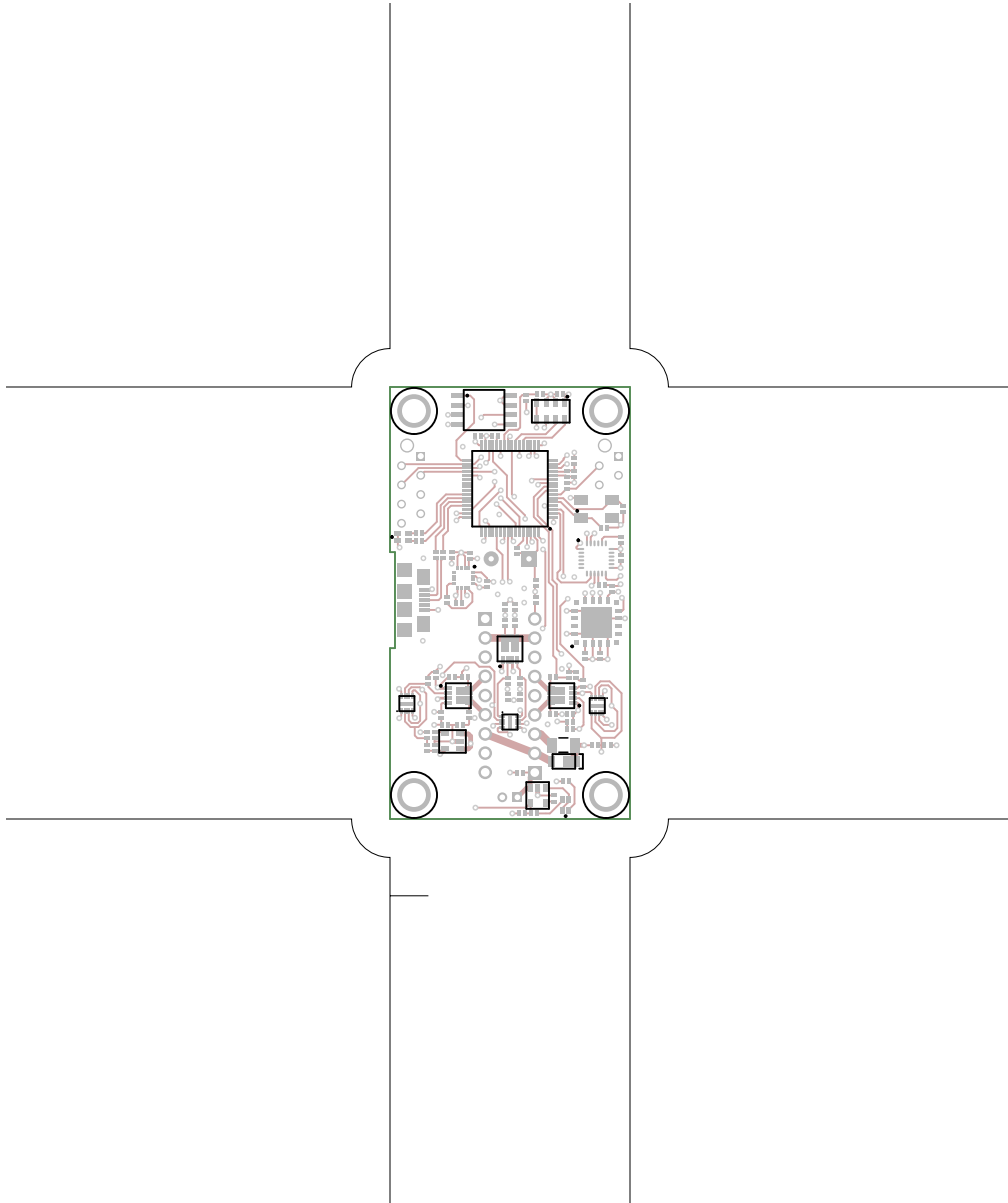


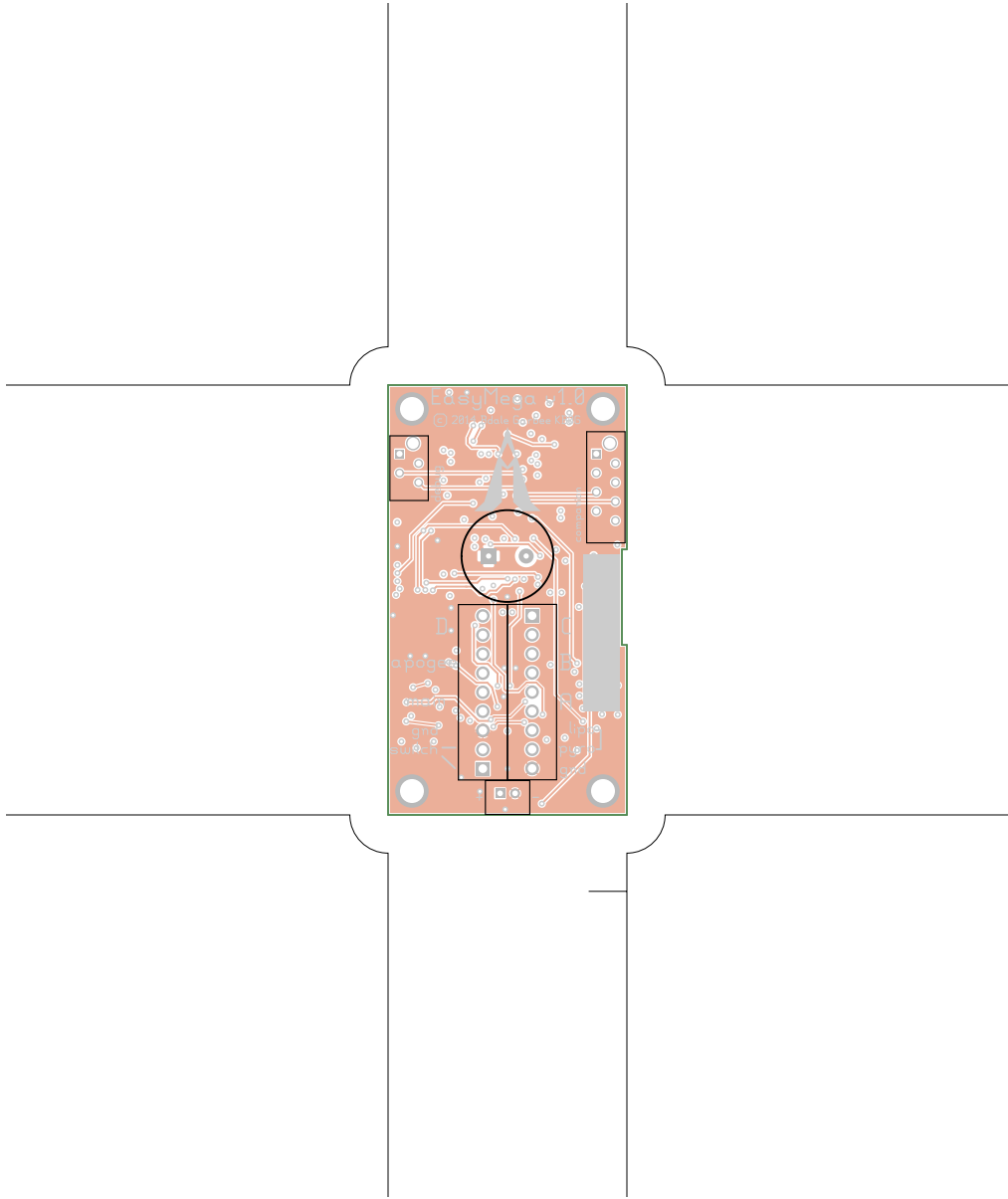










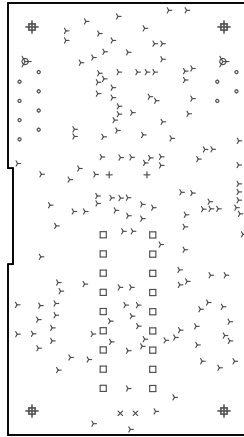


EasyMega, bottomassembly (mirrored), scale = 1:1.000  
easymega.pcb

There are 7 different drill sizes used in this layout, 186 holes total

Symbol	Diam. (Inch)	Count	Plated?
Y	0.015	146	YES
+	0.028	2	YES
x	0.030	2	YES
o	0.032	12	YES
□	0.045	18	YES
⊗	0.059	2	YES
⊕	0.125	4	YES

Title: EasyMega - Fabrication Drawing  
 Author: Bdale Garbee  
 Date: Mon Dec 13 00:19:55 2021 UTC



Board outline is the centerline of this path